



Proactive by Design

GEOTECHNICAL
ENVIRONMENTAL
ECOLOGICAL
WATER
CONSTRUCTION
MANAGEMENT



MEMORANDUM

To: Joseph Martella, RIDEM

From: Dave Rusczyk, GZA

CC: Kenneth Lento, National Grid

Date: June 8, 2021

Re: Site Response Action Report
Period May 16, 2021 through May 29, 2021
Former Tidewater Facility
Pawtucket, Rhode Island
RIDEM Case No. 95-022 / Site Remediation File No. SR-26-0934

SITE ACTIVITIES PERFORMED

- Charter Contracting Company, LLC (Charter) continued activities related to implementation of the remedial construction work. These activities included:
 - Continued installation of the steel sheetpiles for the containment wall.
 - Continued on-Site processing/sizing of the concrete debris for fill beneath the engineered cap.
 - Continued backfilling behind the installed portions of the containment wall.
 - Continued regrading of the southern portion of the Site to engineered cap subgrade.
 - Continued removal of the piping and structures associated with Source Area #3.
 - Completion of the installation of recovery and monitoring wells in the southern portion of the Site.
 - Redevelopment of the newly installed recovery and monitoring wells in the southern portion of the Site.
 - Installation of a new manhole and associated reinforced concrete piping to extend the existing combined sewer outfall through the containment wall.
 - Continued trimming (cutting) of the top of the installed portions of the containment wall to finished grade elevations.
- GZA continued to perform a monitoring program to evaluate turbidity levels within the Seekonk River adjacent to the Site. These readings were obtained inside and outside the turbidity curtain.
- Perimeter air monitoring was performed during the period covered by this report with 11 air monitoring stations (4 solar powered units located proximate to the river and 7 electrically powered units). These stations measured and recorded respirable dust and total volatile organic compounds (TVOC) concentrations continuously 24 hours per day/7 days per week. As indicated in the attached weekly perimeter air monitoring graphs, isolated exceedances of the TVOC (0.5 parts per million) and respirable dust ($150 \mu\text{g}/\text{m}^3$) perimeter threshold levels were noted during the period covered by this report. The isolated respirable dust exceedance was detected at Station 4 on May 26, 2021 at 2:06 pm. This isolated respirable dust level



exceedance was attributed to the work activities; however, the elevated dust levels decreased to background levels before implementation of engineered controls were necessary. The elevated TVOC perimeter threshold exceedances were primarily detected in the early evenings and mornings at the 4 solar powered stations located adjacent to the river. The air samples screened by the 4 solar powered stations (Stations 1 through 4) are not preheated within the unit prior to measuring the TVOC concentrations. As a result, the TVOC concentrations measured by the solar powered stations are affected and biased high during conditions with elevated humidity/dewpoint levels or during rapid changes in humidity levels. As shown on the TVOC plots for the 4 solar power air monitoring stations, the humidity levels as measured by the on-Site weather station over the past 2-weeks ranged from less than 5% to 100% and, with the exception of two isolated elevated TVOC concentrations at Station 4, the elevated TVOC levels observed at the 4 solar powered air monitoring stations during this period were attributed to these elevated humidity levels and rapid changes in humidity levels rather than Site work activities. The first elevated TVOC level at Station 4 was detected on May 17, 2021 at 11:46 am and the elevated TVOC level was attributed to the exhaust of a drill rig that was operating proximate to the air monitoring station rather than Site impacts. The second elevated TVOC level at Station 4 was detected on May 26, 2021 at 2:06 pm; however, the elevated TVOC level decreased to background levels before implementation of engineered controls were necessary. The air monitoring results were posted to the project website and the bulletin boards at the ends of Tidewater Street and Bowles Court and are also attached to this report.

- GZA collected ambient air samples from upwind and downwind locations on May 20, 2021 and May 27, 2021 for laboratory analysis for benzene, toluene, ethylbenzene, xylenes, and naphthalene. The analytical results from these samples indicated there were no exceedances of the project action levels. The analytical results were posted to the project website and the bulletin boards at the ends of Tidewater Street and Bowles Court and are also attached to this report.

ANTICIPATED SITE ACTIVITIES TO BE PERFORMED WITHIN NEXT 2 WEEKS

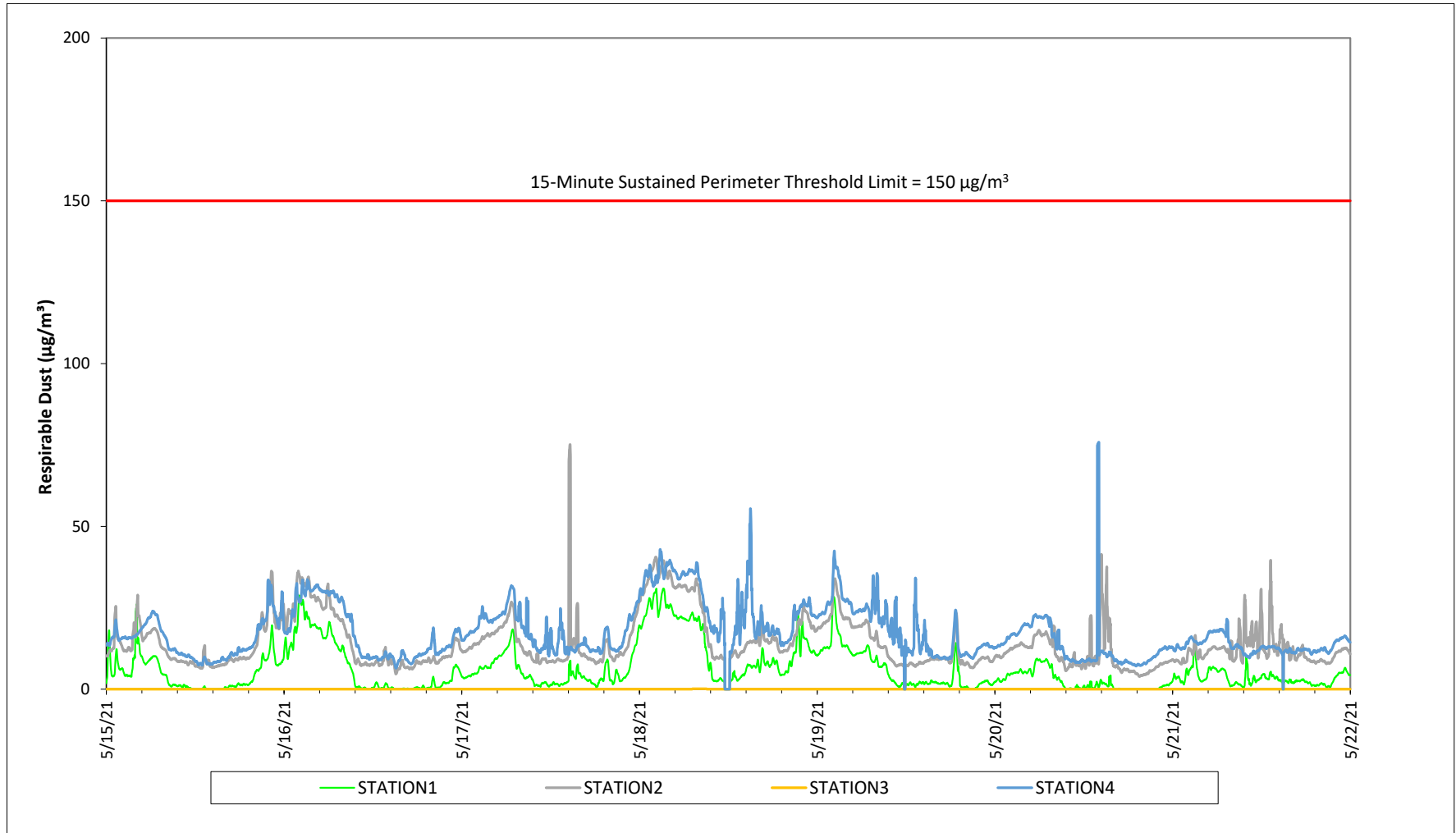
- Continued backfilling behind the containment wall.
- Continued construction of the revetment on the riverbank in the southern portion of the Site.
- Continued removal of the material from Source Area #3.
- Continued regrading of the southern portion of the Site to subgrade elevations for the engineered cap.
- Removal of the impacted materials from Source Area #2.
- Extension of the CSO piping through the containment wall.
- Sealing of the penetrations through the containment wall for the CSO and City of Pawtucket stormwater drain line

Please contact Kenneth Lento at 781-907-3655 if you have any questions or comments.

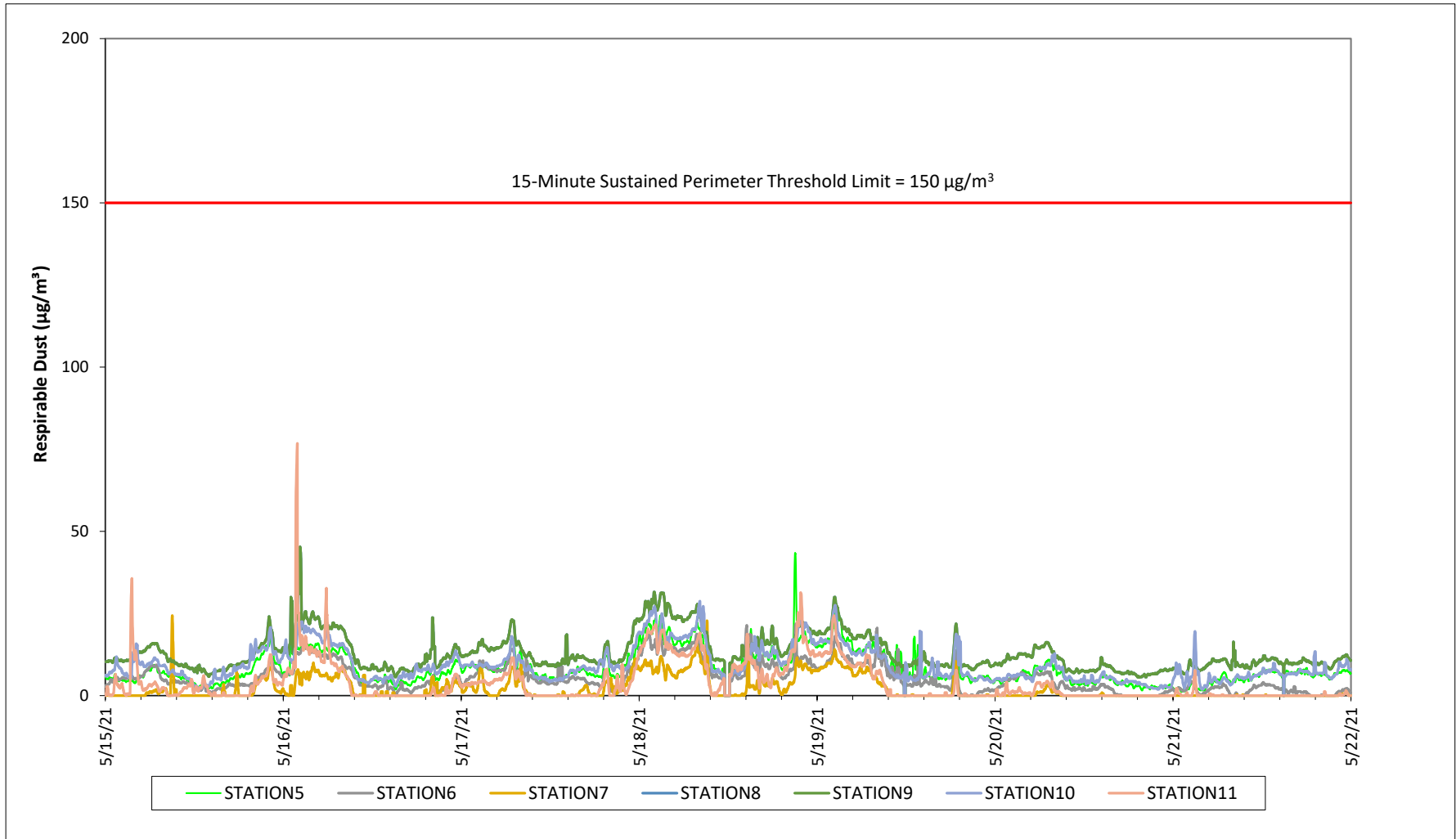
Attachments:

Weekly Perimeter Air Monitoring Results
Air Monitoring Station Locations
Weekly Ambient Air Sampling Results

Prepared by National Grid for the Businesses and Residents Located Near the Former
Tidewater Facility
Air Quality Monitoring - Respirable Dust

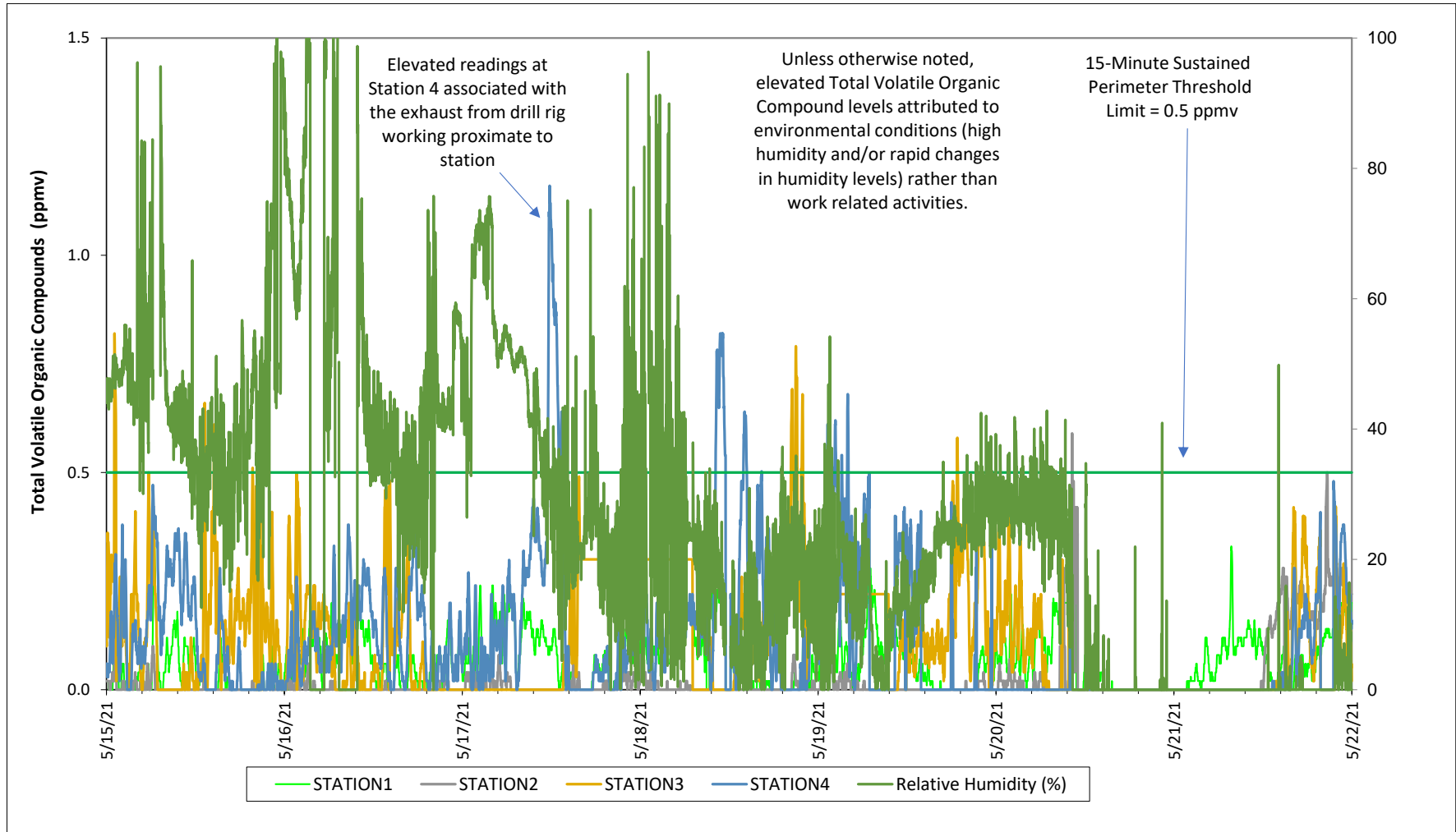


Prepared by National Grid for the Businesses and Residents Located Near the Former
Tidewater Facility
Air Quality Monitoring - Respirable Dust



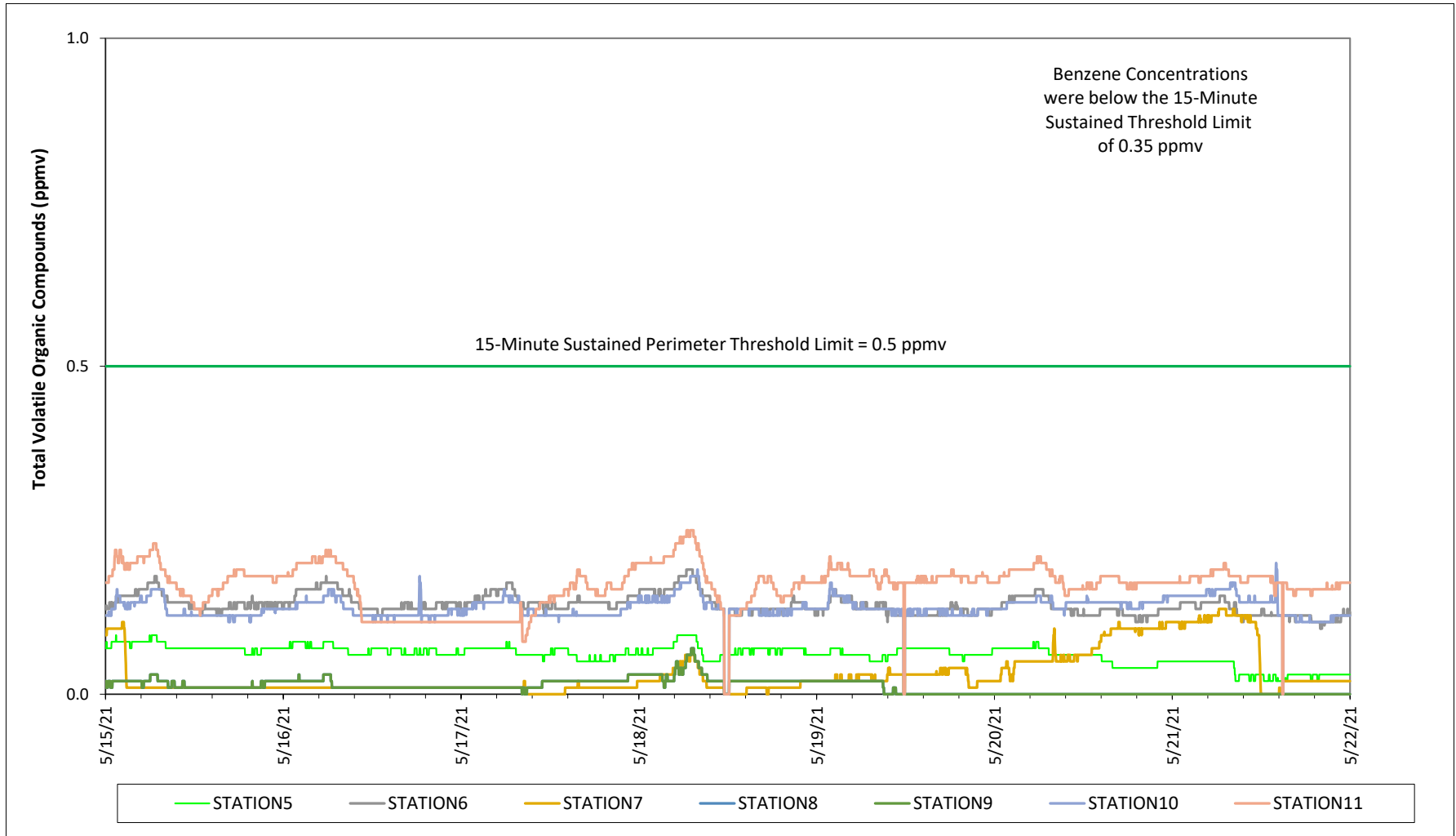
Prepared by National Grid for the Businesses and Residents Located Near the Former Tidewater Facility

Air Quality Monitoring - Total Volatile Organic Compounds

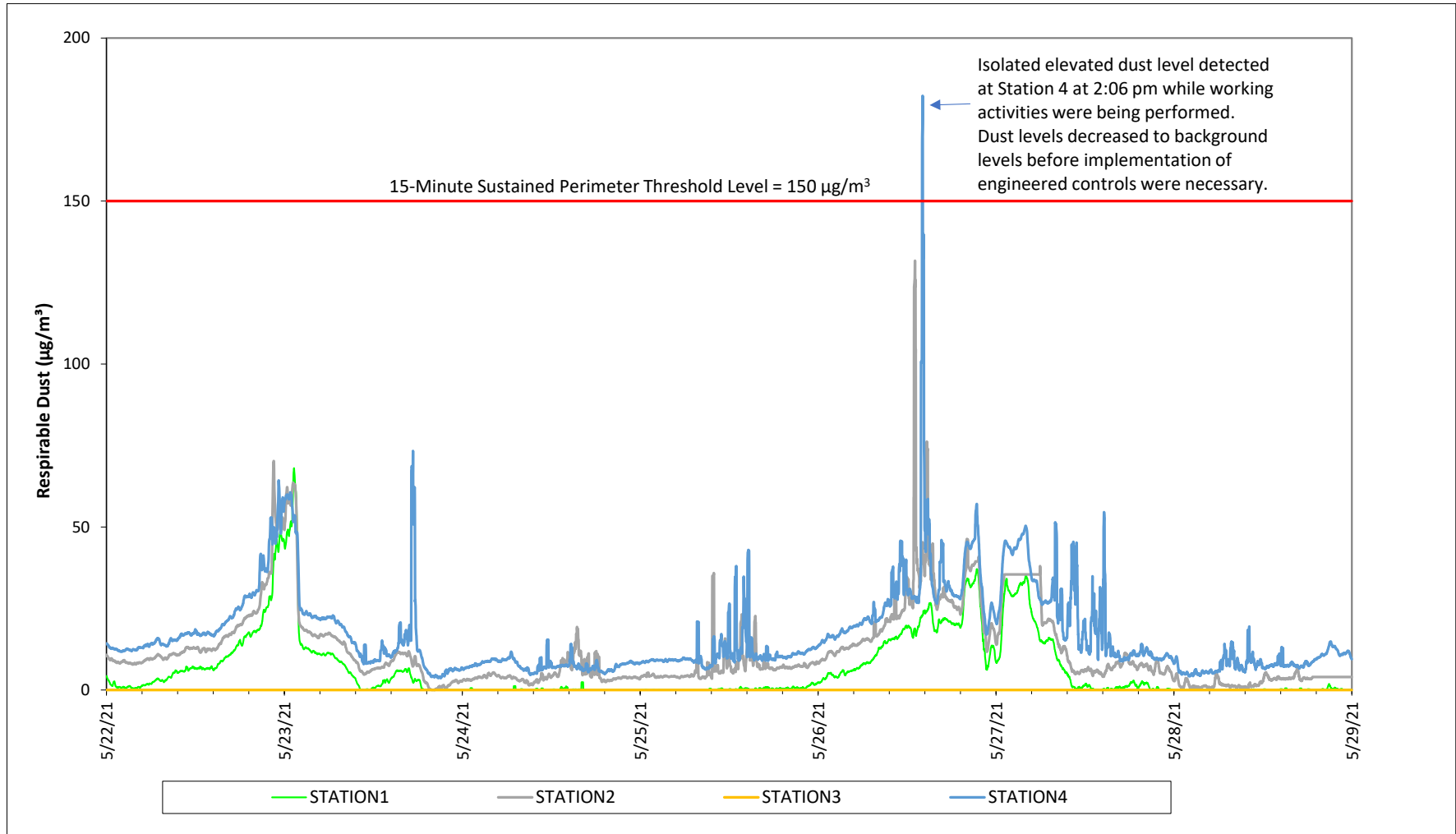


Prepared by National Grid for the Businesses and Residents Located Near the Former
Tidewater Facility

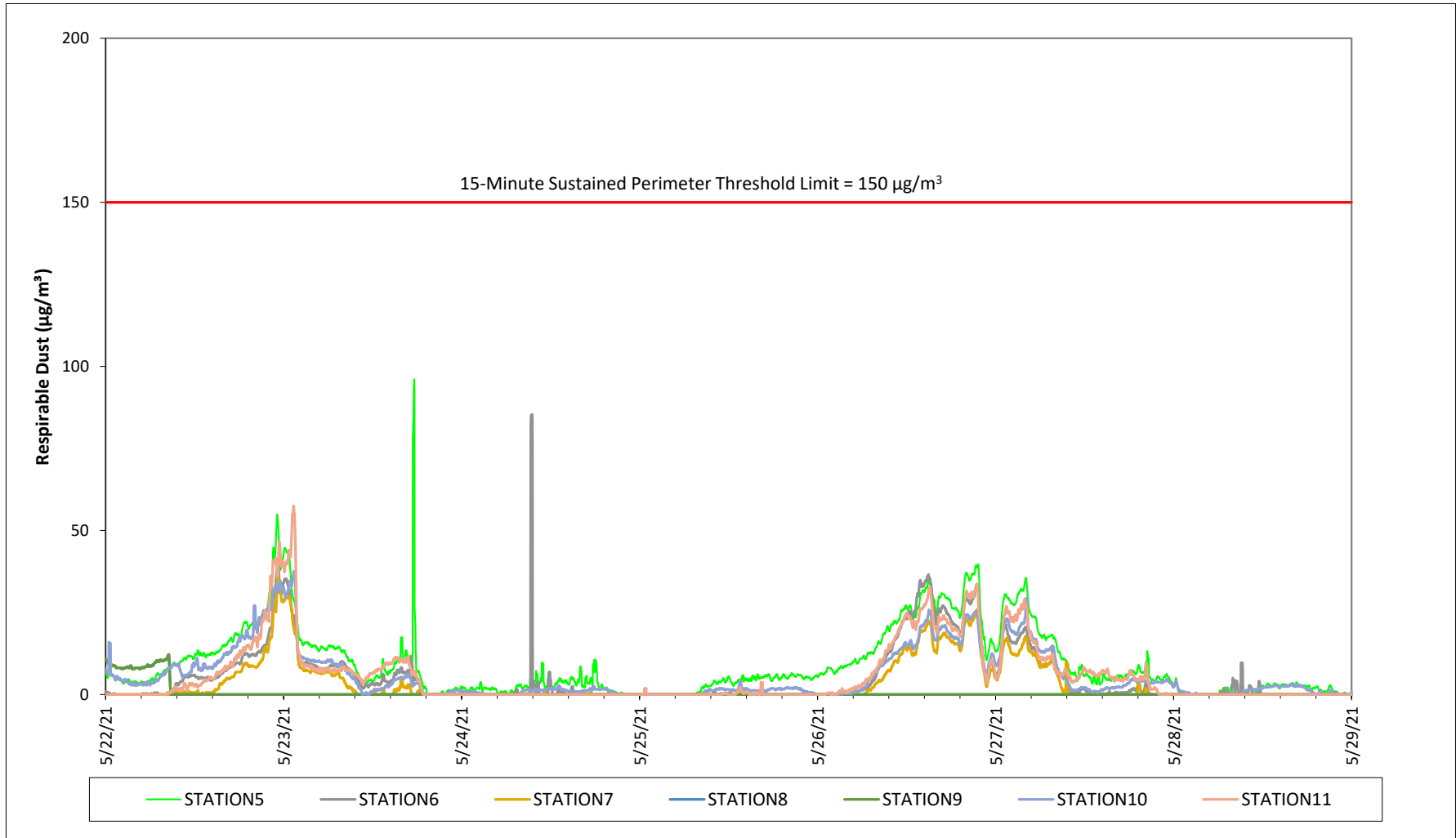
Air Quality Monitoring - Total Volatile Organic Compounds



Prepared by National Grid for the Businesses and Residents Located Near the Former
Tidewater Facility
Air Quality Monitoring - Respirable Dust

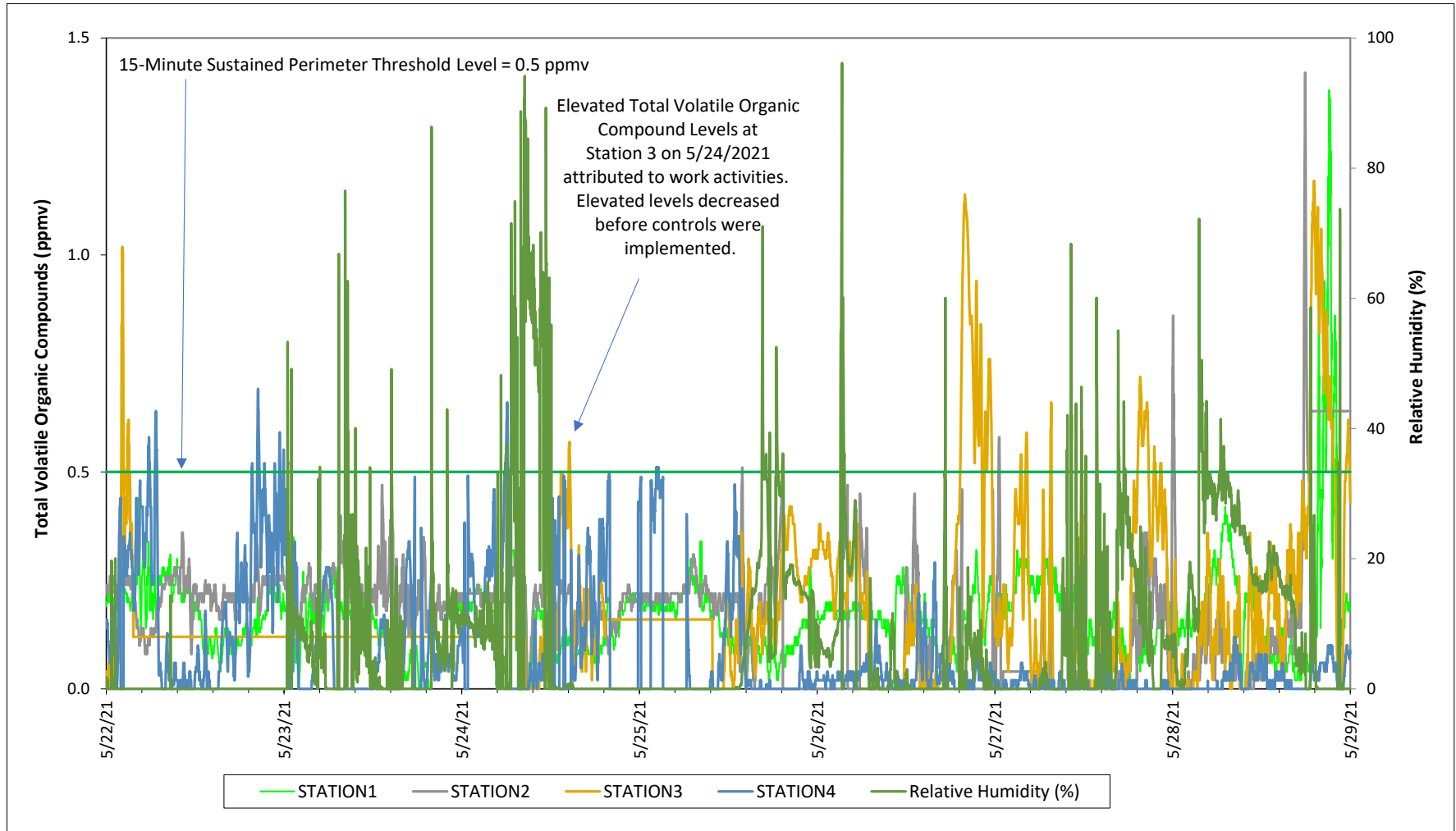


Prepared by National Grid for the Businesses and Residents Located Near the Former
Tidewater Facility
Air Quality Monitoring - Respirable Dust



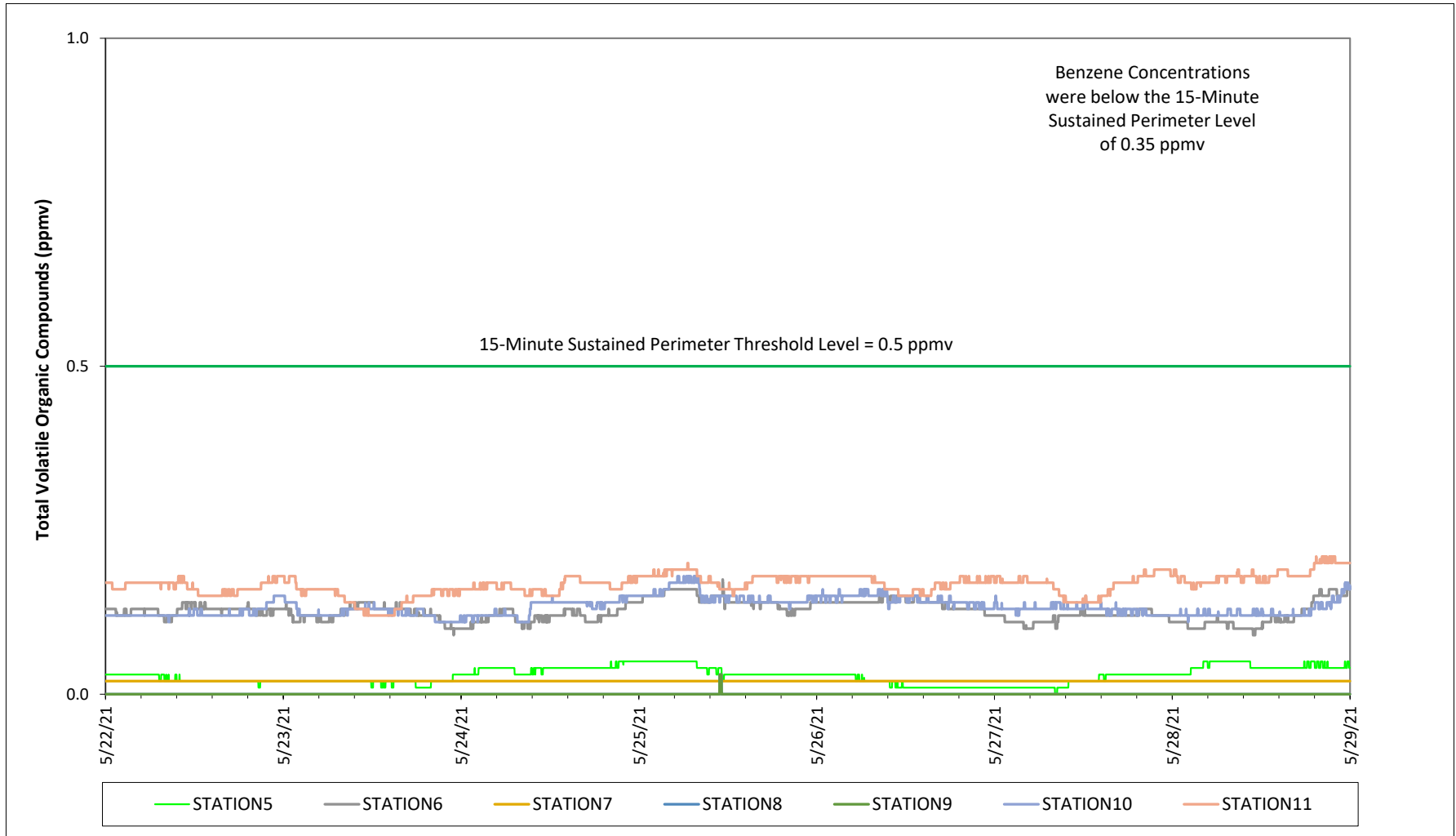
Prepared by National Grid for the Businesses and Residents Located Near the Former
Tidewater Facility

Air Quality Monitoring - Total Volatile Organic Compounds

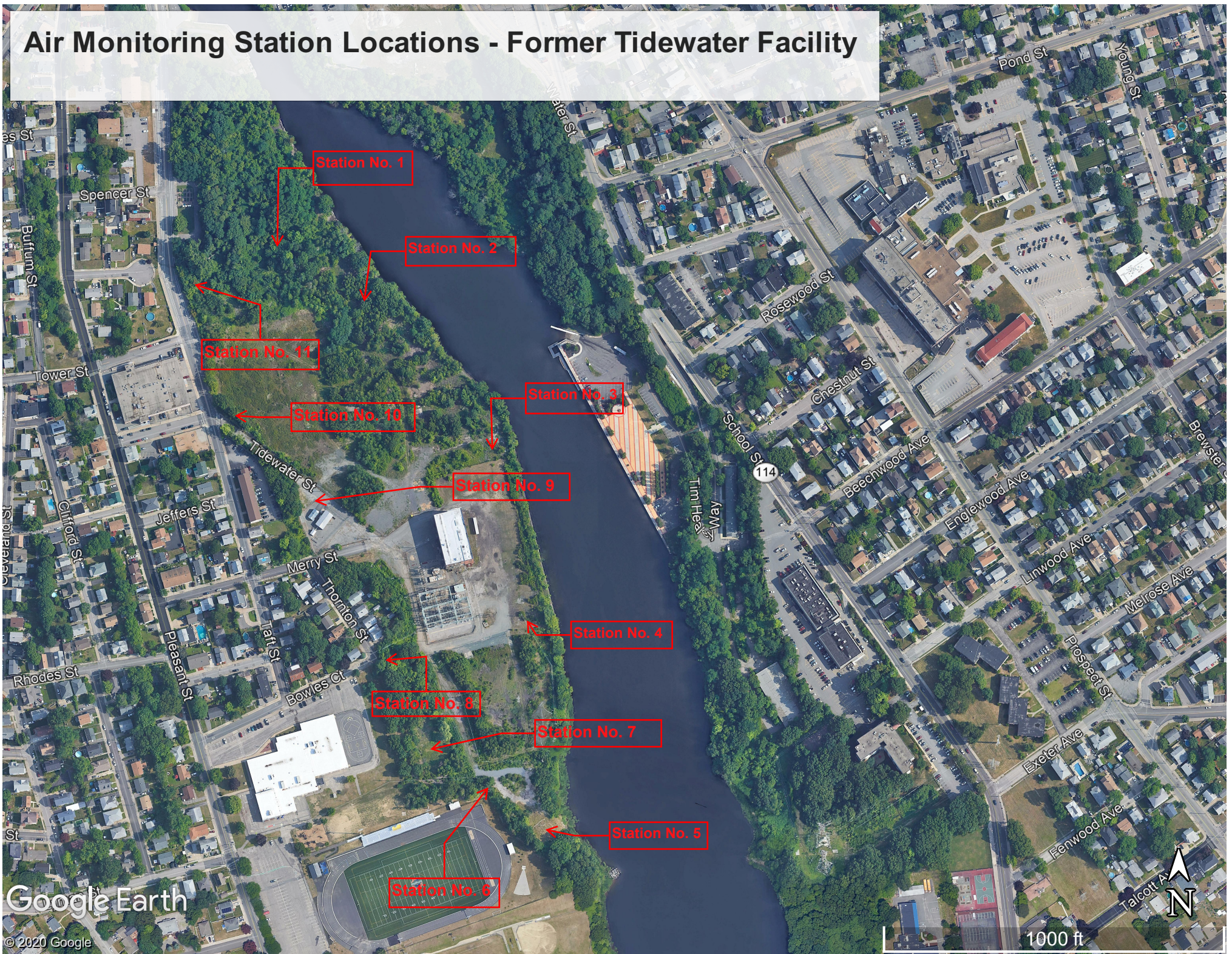


Prepared by National Grid for the Businesses and Residents Located Near the Former
Tidewater Facility

Air Quality Monitoring - Total Volatile Organic Compounds



Air Monitoring Station Locations - Former Tidewater Facility



Google Earth

© 2020 Google

1000 ft



**Prepared by National Grid for the Businesses and Residents Located Near the Former Tidewater Facility
Weekly Ambient Air Sampling Results**

Sample Date	Compounds				
	Benzene	Toluene	Ethylbenzene	Total Xylenes	Naphthalene
	(ppb v/v)				
12-3-20 UP STREAM	0.13	0.22	0.079	0.054	< 0.5
12-3-20 DOWN STREAM	0.13	0.2	0.073	0.05	< 0.5
12-10-20 UP STREAM	0.25	0.23	< 0.2	0.14	< 0.5
12-10-20 DOWN STREAM	0.17	0.2	< 0.2	< 0.7	< 0.5
12-16-20 UP STREAM	0.19	0.2	0.083	0.12	< 0.5
12-16-20 DOWN STREAM	0.13	0.16	0.078	0.094	< 0.5
12-23-20 UP STREAM	0.15	0.16	< 0.2	0.1	< 0.5
12-23-20 DOWN STREAM	0.13	0.11	< 0.2	< 0.7	< 0.5
12-30-20 UP STREAM	0.21	0.22	< 0.2	< 0.7	< 0.5
12-30-20 DOWN STREAM	0.089	< 0.2	< 0.2	< 0.7	< 0.5
1/7/21 UP STREAM	0.29	1.5	0.22	2.1	< 0.5
1/7/21 DOWN STREAM	0.16	0.27	0.086	0.42	< 0.5
1/14/21 UP STREAM	0.43	0.44	< 0.2	0.23	< 0.5
1/14/21 DOWN STREAM	0.4	0.52	0.076	0.3	< 0.5
1-21-21 UPSTREAM	0.15	0.28	0.1	< 0.7	0.24
1-21-21 DOWNSTREAM	0.18	0.23	0.11	0.1	< 0.5
1-28-21 UPSTREAM	0.21	0.19	< 0.2	< 0.7	< 0.5
1-28-21 DOWNSTREAM	0.21	0.17	< 0.2	< 0.7	< 0.5
2-4-21 UPSTREAM	0.2	1.1	0.23	1.4	0.18
2-4-21 DOWNSTREAM	0.23	0.29	0.26	0.29	< 1.1
2-11-21 UPSTREAM	0.19	0.12	< 0.2	< 0.7	< 0.5
2-11-21 DOWNSTREAM	0.17	< 0.2	< 0.2	< 0.7	< 0.5
2-18-21 UPSTREAM	0.46	2.8	0.11	0.25	< 0.5
2-18-21 DOWNSTREAM	0.31	0.42	0.13	0.45	< 0.5
2-25-21 UPSTREAM	< 0.2	0.16	< 0.2	0.16	< 0.5
2-25-21 DOWNSTREAM	0.13	< 0.2	0.081	0.3	< 0.5
3-4-21 UPSTREAM	0.2	0.21	< 0.2	0.18	0.27
3-4-21 DOWNSTREAM	0.15	0.12	< 0.2	0.16	< 0.5
3-11-21 UPSTREAM	0.18	0.17	< 0.2	0.23	0.3
3-11-21 DOWNSTREAM	0.18	0.22	0.23	1.0	< 0.5
3-18-21 DOWNSTREAM	0.44	1.6	0.19	0.67	< 0.5
3-25-21 UPSTREAM	0.17	0.32	0.85	4.1	0.53
3-25-21 DOWNSTREAM	0.33	0.67	0.16	0.57	0.27
4-1-21 UPSTREAM	0.22	0.17	< 0.2	< 0.7	< 0.5
4-1-21 DOWNSTREAM	0.12	0.11	< 0.2	< 0.7	< 0.5
4-8-21 UPSTREAM	0.096	0.12	1.5	8.0	< 0.5
4-8-21 DOWNSTREAM	0.086	0.14	0.086	0.38	0.19
4-15-21 UPSTREAM	0.85	0.57	0.1	0.44	< 0.5
4-15-21 DOWNSTREAM	0.11	0.11	0.26	1.20	< 0.5
4-22-21 UPSTREAM	0.11	< 0.2	< 0.2	< 0.7	< 0.5
4-22-21 DOWNSTREAM	0.11	0.16	< 0.2	< 0.7	< 0.5
4-29-21 UPSTREAM	0.14	0.34	0.11	0.32	0.26
4-29-21 DOWNSTREAM	0.19	0.39	0.11	0.37	0.27
5-6-21 UPSTREAM	0.086	0.15	< 0.2	< 0.7	0.38
5-6-21 DOWNSTREAM	1.0	8.4	0.21	0.69	< 0.5
5-13-21 UPSTREAM	< 0.2	0.36	< 0.2	0.19	0.34
5-13-21 DOWNSTREAM	0.12	< 0.2	< 0.2	< 0.7	< 0.5
5-20-2021 UPSTREAM	0.38	2.5	< 0.2	< 0.7	< 0.5
5-20-2021 DOWNSTREAM	0.16	0.56	0.3	1.40	< 0.5
5-27-21 UPSTREAM	0.095	0.12	0.45	2.10	0.4
5-27-21 DOWNSTREAM	0.075	0.094	< 0.2	< 0.7	< 0.5
Project Action Levels	6.2	80	230	23	20

Notes:

1. The Project Action Levels are consistent with the Air Quality Monitoring Plan developed for the Site.
2. Air samples are collected in stainless steel summa canisters over an approximately 8-hour period.
3. Air samples are analyzed by EuroFins TestAmerica of Burlington, VT.
4. Results and action levels are listed in parts per billion volume/volume (ppb v/v).
5. An upstream ambient air sample was not collected on March 18, 2021 due to a problem with the sampling equipment.