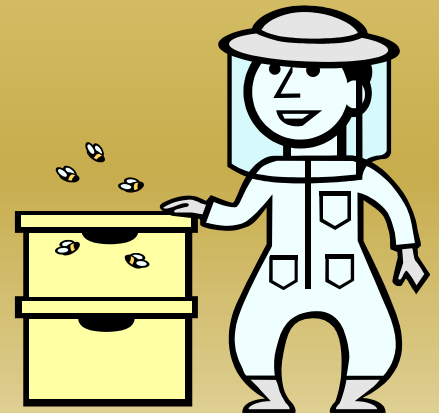




Overview

Speaker: Donald Joslin



About Your Instructor

- Donald Joslin - Beekeeper for 7 Years
Live in Hopkinton
President of RIBA
- Sideline Beekeeper
- About 15 hives
- Honey & Pollination & Mentoring

BEEKEEPING DEFINITIONS

- Apiculture
 - The practice of keeping bees
 - Agricultural commodity
 - Livestock
- Apiary
 - The place where you keep the bees
- Apis Mellifera
 - Our European honey bee
- Apis Mellifera Scutellata
 - African honey bee

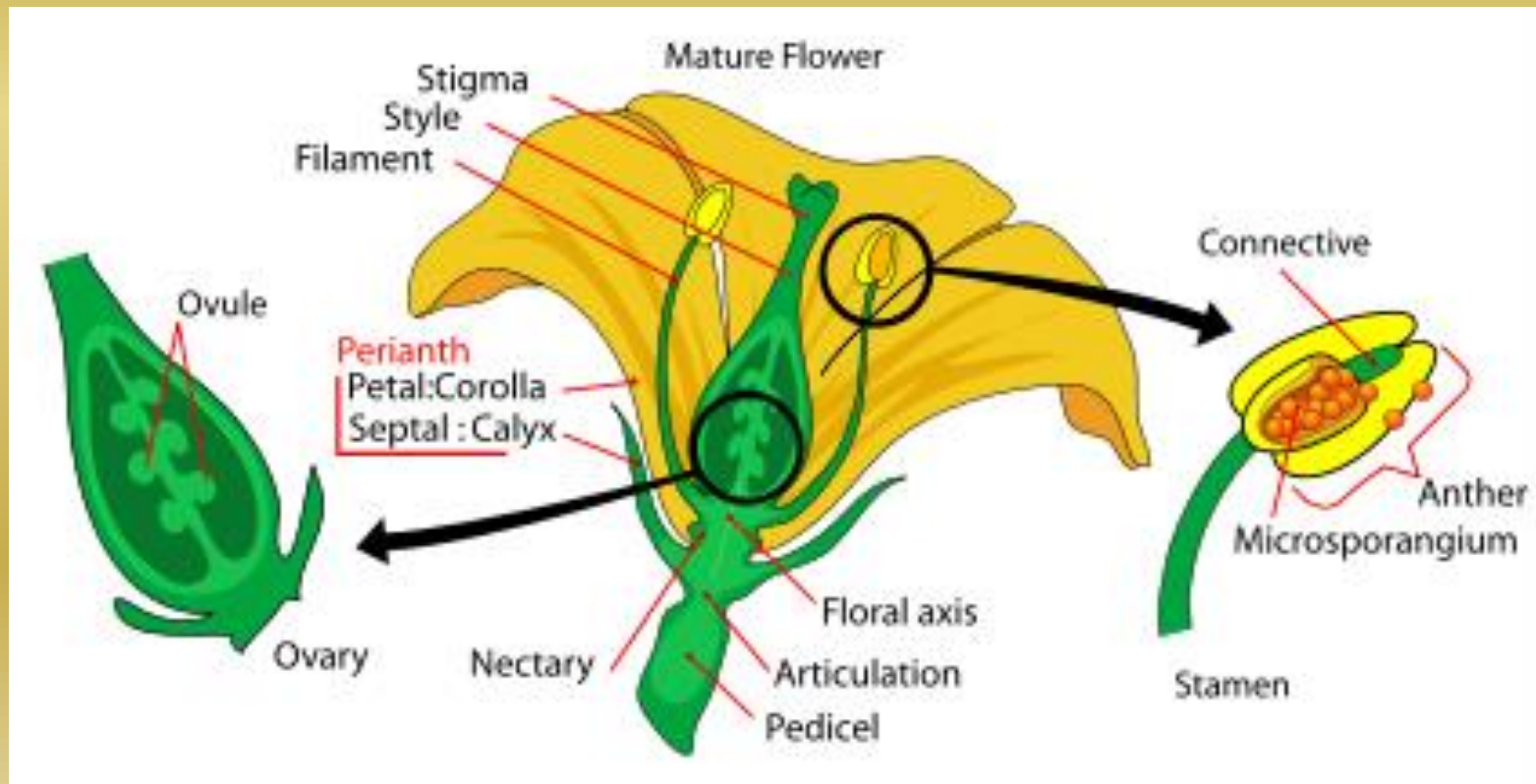
- Apiarist aka Beekeeper
 - Farmer, commercial producer, hobbyist
- Colony
 - The family of bees that lives inside the hive
- Hive
 - The house in which the bees live
- Bee Space
 - Distance Bees Maintain around and between combs

- Foundation – Sheets of Beeswax or Plastic with Hexagonal cell shapes
- Hive Body – Boxes the bees live in – The brood nest
- Honey Super – Boxes used for honey Production only
- Honey Flow – Time when plants produce surplus nectar.

- Nuc – Nucleus Colony – Start up colony of 2-5 frames of bees with laying queen
- Brood – Describes all stages of bee development in the cells
- Dearth – Period of scarce resources
- Varroa – *Varroa Destructor*, Parasitic blood feeding mite of immature and adult bees

- Pollination

- The transfer of pollen from a stamen to a pistil; fertilization in flowering



Why Do we Keep Bees ?

The Almond Crop for Example



2015
4 Million Hives
in U.S.

800,000 Acres
of almonds

2-3 Hives per
acre for
Pollination

1.6 million
Hives needed









H
O
N
E
Y



Making Honey

- Bees add enzymes and Dehydrate
- Sucrose converted to Glucose and Fructose
- High in Antioxidants, vitamins, and minerals
- Antimicrobial
- Sweeter than sugar
- 300 varieties of Honey in U.S.

Rhode Island Honey

Three Major Nectar Flows

Many Micro Flows





Pollen



Propolis



Beeswax

Natural vs. Organic vs. Managed

- Where does one start this discussion!
- Left to themselves they will die. Nature maintains a balance and the fittest survive.
- Man intervenes with the intention of extending useful life
- The level of intervention is the difference between feral and managed

Is Langstroth the killer of the bees?

- Langstroth invented the modern beehive
 - Features are:
 - Removable frames
 - Stackable boxes that take advantage of bee behavior to move up as they expand
 - Bee Space
- Top Bar hives
 - No frames, but have bars that are similar
 - Expand horizontally (unnatural)
 - Can easily violate bee space
 - Originate in Kenya and Tanzania

In Summary

Varroa mites have tipped the balance

Feral colonies do not exist anymore!

We have to have managed hives.

Focus on good management practices.

Beekeepers possibly kill more colonies of bees through poor management than all other causes combined!

I have learned the hard way...

Classifications of Beekeepers

- Small Scale
 - Backyard beekeepers
 - Sideline beekeepers



Handful to several hundred hives

- Large Scale
 - Commercial
 - Migratory Pollinators
 - Honey Producers
 - Bee Producers



1,000 to 100,000+

This is a well supported industry

- State and US departments of agriculture
- Local bee associations
- State bee associations
- National bee associations
- Bee suppliers
- Catalog equipment suppliers
- Good quality periodicals
- Internet forums (grain of salt rule)

There Are Good Friends Everywhere!

National Bee Associations

- Eastern Apicultural Society
- Heartland Apicultural Society
- Western Apicultural Society

- American Beekeepers Federation
- Honey Producers Association

- USDA
- National Honey Board

State Department of Agriculture

- Regulates beekeeping and some states regulate honey quality
- You must register your apiaries
 - Foulbrood and other diseases are a threat of regional proportions
 - You bees are critical to the food supply therefore they are regulated

Local Regulations

- East Providence allows beekeeping with provisions that they not become a nuisance.
- Barrington does not prohibit but does specifically allow beekeeping.
- Hives in Rhode Island must be registered

State Inspectors

- MA Department of Agriculture
 - Ken Watchal
 - Chief Apiary Inspector
 - kenwatchal@state.ma.us
- RI Department of Agriculture
 - Jim Lawson
 - State Apiary Inspector
 - james.lawson@dem.ri.gov

- State Bee Associations
 - RI Beekeepers' Association
www.ribeekeepers.com
 - Mass Bee
 - CT & SNEBA

- Local Bee Associations
 - Bristol Bee
 - Plymouth County
 - Barnstable County
 - Norfolk County
 - Essex County
 - Worcester County

Rhode Island Beekeepers Association - RIBA

- RIBA has monthly hive inspections at meetings
- Many RIBA members will have you over to see their hives
- Mentors. There's a list on the RIBA website
- I am a mentor/cyber-mentor! Feel free to contact me by e-Mail and be patient. I will return your e-Mail.
- Call me, but understand that I get many calls.

Catalog Suppliers

- Brushy Mountain
- Dadant
- Mann Lake
- Walter Kelly Company
- Better Bee

- Look Online

Local Suppliers

- Wood's Beekeeping Supply – Smithfield, RI
- Cottage Industry Apiary- Saunderstown, RI
- Cedar Lane Apiaries – Sterling, Ct
- Warm Colors Apiaries – S. Deerfield, MA

Trade Journals & Periodicals

- Must have:
 - Bee Culture Magazine
 - www.beeculture.com
 - American Bee Journal
 - www.americanbeejournal.com
- Internet
 - www.beesource.com
 - Facebook groups ribeekkeepers
 - Bee Line