

June 13, 2007
File No. 32795.19-C



Ms. Joan Taylor
Rhode Island Department of Environmental Management
Office of Waste Management
235 Promenade Street
Providence, Rhode Island 02908-5767

Re: Response to Change of Conditions
Charbert Facility Rear Yard TPH Area
Charbert, Division of NFA Corp.
Alton, Rhode Island

140 Broadway
Providence
Rhode Island
02903
401-421-4140
Fax: 401-751-8613
www.gza.com

Dear Ms. Taylor:

On behalf of our client, GZA GeoEnvironmental, Inc. (GZA) has prepared this letter as a follow-up to the change in conditions observed in the rear yard area of the above-referenced site. You may recall that this area was delineated as containing total petroleum hydrocarbons (TPH) and chlorinated solvents at concentrations above Method 1 Industrial/Commercial Direct Exposure Criteria (I/CDEC) by GZA in the June 2, 2005 *Site Investigation Report (SIR)*. This letter is considered an addendum to the SIR, and as such, is subject to the Limitations and Terms and Conditions described and/or referenced therein.

On May 8, 2007, GZA personnel observed oil in three of the 1-inch PVC wells installed for the soil vapor extraction pilot test. Floating product had not previously been detected in any of the existing wells in this area. As a result of these findings, and as a precaution, the following activities were completed:

- Charbert's Director of Environmental Affairs, Mike Healey, notified the Department that a change of conditions had occurred;
- To evaluate if the observed oil was a "new release" or a change in known conditions caused by fluctuating groundwater, GZA personnel collected a sample of the oil for finger printing by laboratory analysis; and
- Oil absorbent booms were deployed along the edge of "Old Lagoon 5."

The oil was characterized by laboratory analysis as weathered diesel oil or lightly weathered #2 fuel oil (results attached as Appendix A). Historically, kerosene, fuel oil, and diesel had been stored in this area. Based on the laboratory testing results, the oil observed in the wells, in GZA's opinion is not considered a new release. To help ensure that a future release does not occur in the area, the subsurface oil supply pipeline that supplies the boiler-room located in this area was abandoned and a new oil pipeline was installed above grade along the exterior walls of the facility.

On May 11, 2007, test pits were excavated and observed by GZA and RIDEM personnel. As previously observed in subsurface investigations in this area, soils that appeared to be contaminated with petroleum were encountered at depths of approximately 5 to 6 feet below the ground surface. Additionally, oil sheen developed on the groundwater surface in the open excavations. Two abandoned tile drain lines were encountered at approximately 6 feet below the

ground surface. These lines were removed to the extent practical (approximately 8-feet of pipe) and the remaining pipe leading toward Old Lagoon 5 was filled with concrete. To further evaluate the potential for free product to accumulate, a 12-inch ADS recovery well was installed from 7-feet below to 1-foot above the ground surface in this area. This well will be periodically monitored and accumulated floating oil product, if any, will be removed for proper off-site disposal.



During the test pit activities, soils were observed for visual and olfactory evidence of contamination. Soils that appeared to be contaminated were stockpiled on and cover with 10-mil polyethylene sheeting. Approximately 25 cubic yards of soils was segregated due to possible contamination and the following laboratory analysis was performed on samples collected from the stockpiles (see attached laboratory certificates, Appendix A):

- Total Petroleum Hydrocarbons (EPA Method 8100M)
- Volatile Organic Compounds (EPA Method 8260B)
- Semi-volatile Organic Compounds (EPA Method 8270C),
- Total Metals (EPA Method 6010B/7471A)

The soils were removed on June 7, 2007 and disposed of at ESMI of Loudon, New Hampshire; the Bill of Lading has been attached as Appendix B.

We trust that this information fulfills your present needs. If you have any questions or comments, please call Stephen or Ed at (401)-421-4140.

Very truly yours,

GZA GEOENVIRONMENTAL, INC.

A handwritten signature in blue ink, appearing to read 'Stephen Andrus', is written over the typed name and title.

Stephen Andrus
Assistant Project Manager

A handwritten signature in blue ink, appearing to read 'John P. Hartley', is written over the typed name and title.

John P. Hartley
Principal/Reviewer

A handwritten signature in blue ink, appearing to read 'Edward A. Summerly', is written over the typed name and title.

Edward A. Summerly, P.G.
Associate Principal

EAS:tja

Attachments: Appendix A: Laboratory Data Sheets
Appendix B: Bill of Lading

cc: Cynthia Gianfrancesco, RIDEM-OWM
Mary Morgan, Richmond Town Hall
Clark Memorial Library - Charbert Repository

APPENDIX A

LABORATORY DATA SHEETS



CERTIFICATE OF ANALYSIS

GZA / Geoenvironmental, Inc.
Attn: Mr. Steve Andrus
140 Broadway
Providence, RI 02903

Date Received: 5/9/07
Date Reported: 5/10/07
P.O. #:
Work Order #: 0705-07356

DESCRIPTION: PROJECT# 32795.19 CHARBERT

Subject sample(s) has/have been analyzed by our Warwick, R.I. laboratory with the attached results.

Reference: All parameters were analyzed by U.S. EPA approved methodologies and all NELAC requirements were met. The specific methodologies are listed in the methods column of the Certificate Of Analysis.

Data qualifiers (if present) are explained in full at the end of a given sample's analytical results.

Certification #: RI-033, MA-RJ015, CT-PH-0508, ME-RJ015
NH-253700 A & B, USDA S-41844, NY-11726

If you have any questions regarding this work, or if we may be of further assistance, please contact our customer service department.


Approved by:

Mike Hobin
Data Reporting

enc: Chain of Custody

R.I. Analytical Laboratories, Inc.
 CERTIFICATE OF ANALYSIS

GZA / Geoenvironmental, Inc.
 Date Received: 5/9/07
 Work Order #: 0705-07356

Approved by: 
 Data Reporting

Sample # 001

SAMPLE DESCRIPTION: REAR YARD NAPL

SAMPLE TYPE: GRAB

SAMPLE DATE/TIME: 5/08/2007 @ 17:00

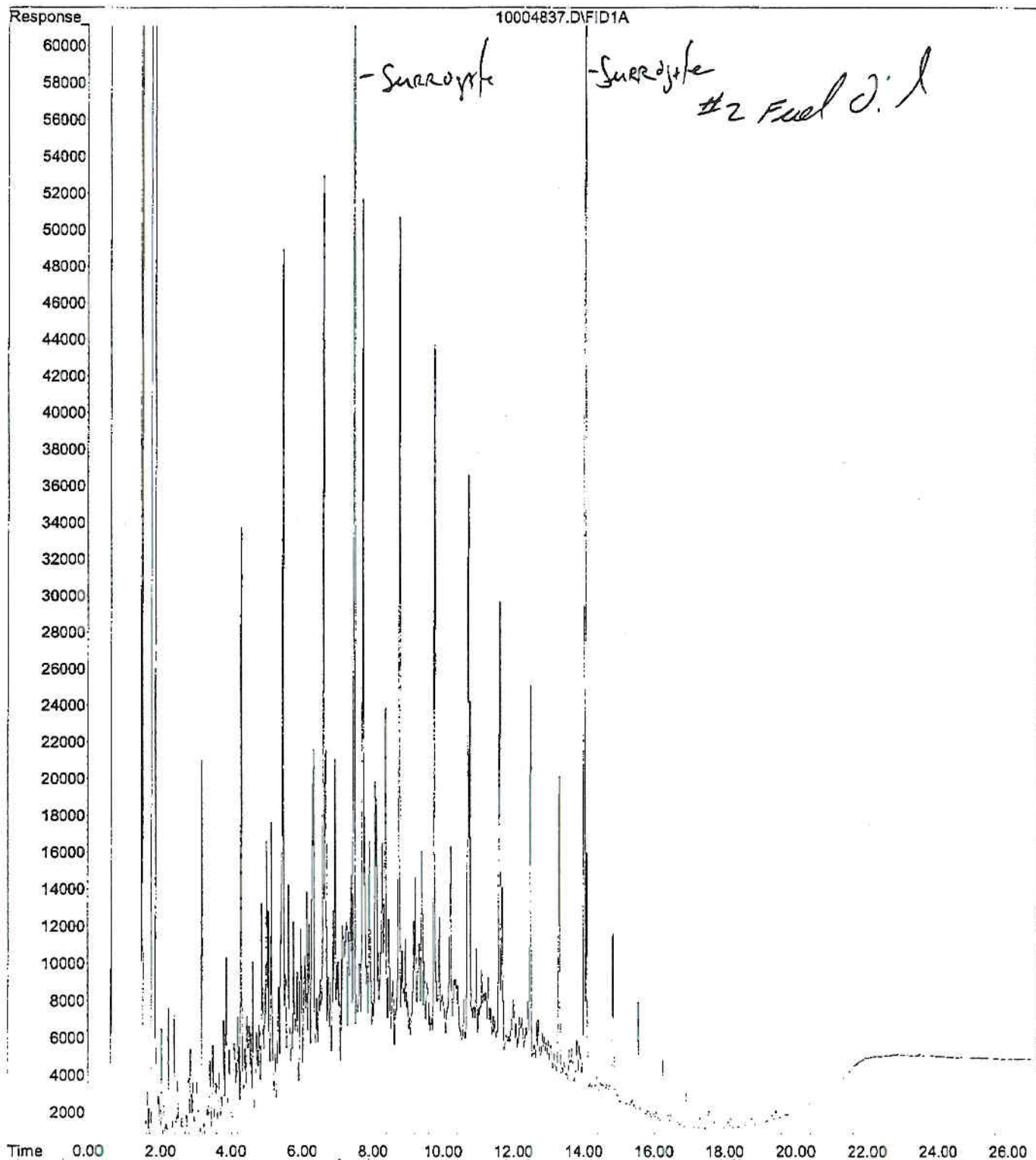
PARAMETER	SAMPLE RESULTS	DET. LIMIT	UNITS	METHOD	DATE ANALYZED	ANALYST
Flashpoint	>200	80	deg F	SW846 1010	5/9/07	EOO
TPH						
TPH Fingerprint	See Below			SW846 8100M	5/9/07	RGM
Moisture	NA		%	SM2540 G.	5/9/07	DPD
Extraction date	Extracted			SW846 3580	5/9/07	RGM

Fingerprint Evaluation:

The sample was received as a NAPL (50% oil/water phase). The oil phase was diluted and analyzed by GC/FID techniques.

The chromatogram, associated with this sample, was comprised of a single distribution eluting between C9 and C22. This distribution most closely resembles a #2 Fuel Oil/Diesel Fuel. This product has to some extent, under gone "weathering". The earlier portion of the chromatogram is more pronounced as compared to fresh #2 Fuel Oil. This effect can be associated with water solubility and partitioning within the water column and not age.

File : C:\HPCHEM\5\DATA\050807\10004837.D
Operator :
Acquired : 8 May 2007 4:47 pm using AcqMethod TPHERT1.M
Instrument : FID 2
Sample Name: TPH SON LCS 5/8
Misc Info :
Vial Number: 2

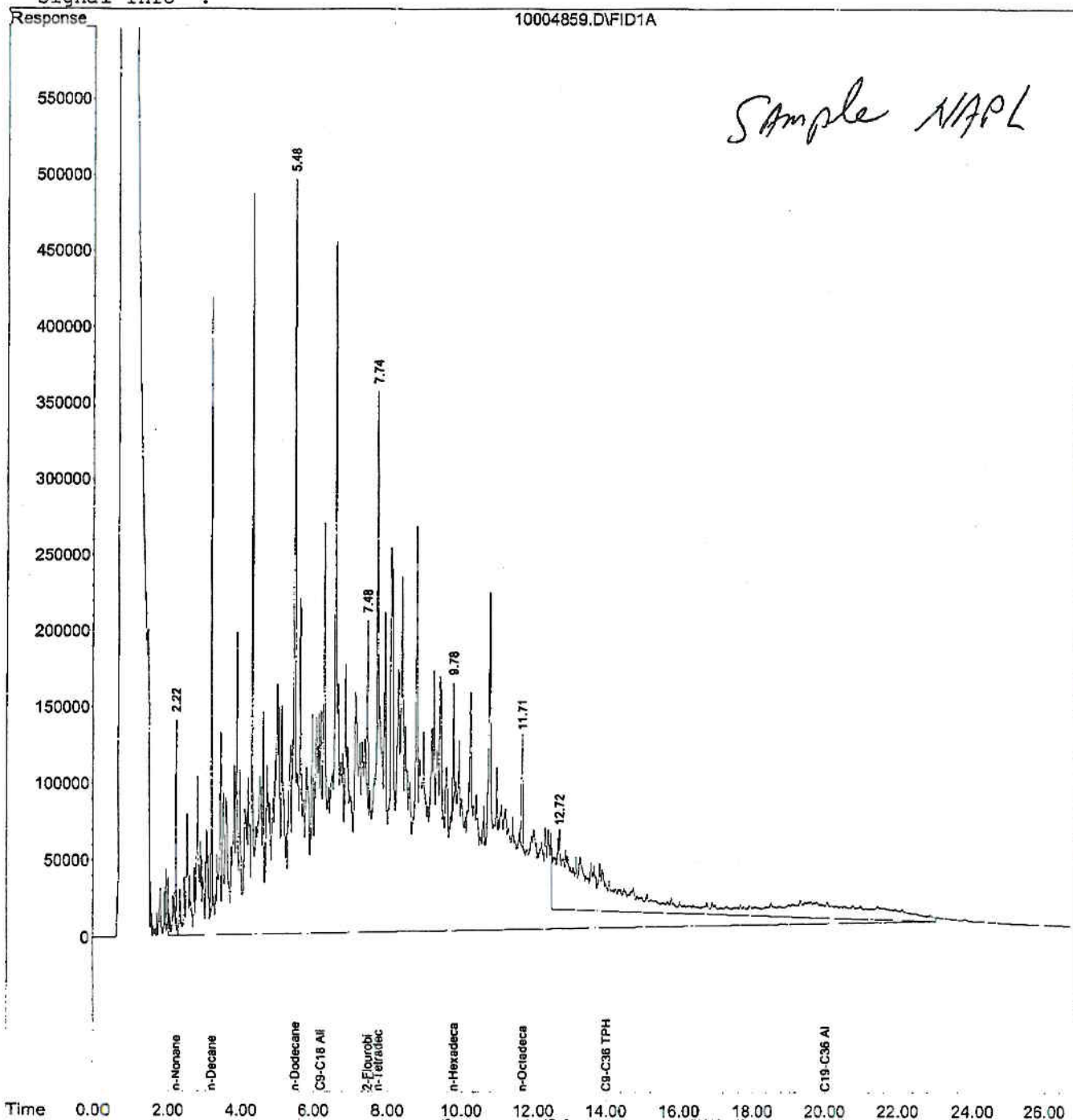


Data File : C:\HPCHEM\5\DATA\050907\10004859.D
Acq On : 9 May 2007 12:09 pm
Sample : TPH 7356-1 OIL 0.0156/1.0 mL
Misc :
IntFile : EVENTS.E
Quant Time: May 9 12:43 2007 Quant Results File: TPHFRONT.RES

Vial: 4
Operator:
Inst : FID 2
Multiplr: 1.00

Quant Method : C:\HPCHEM\5\METHODS\TPHFRONT.M (Chemstation Integrator)
Title :
Last Update : Wed May 09 12:40:52 2007
Response via : Multiple Level Calibration
DataAcq Meth : TPHFR1.M

Volume Inj. :
Signal Phase :
Signal Info :





CERTIFICATE OF ANALYSIS

GZA / Geoenvironmental, Inc.
Attn: Mr. Steve Andrus
140 Broadway
Providence, RI 02903

Date Received: 5/14/07
Date Reported: 5/16/07
P.O. #:
Work Order #: 0705-07630

DESCRIPTION: PROJECT# 32795.19 CHARBERT

Subject sample(s) has/have been analyzed by our Warwick, R.I. laboratory with the attached results.

Reference: All parameters were analyzed by U.S. EPA approved methodologies and all NELAC requirements were met. The specific methodologies are listed in the methods column of the Certificate Of Analysis.

Data qualifiers (if present) are explained in full at the end of a given sample's analytical results.

Certification #: RI-033, MA-RI015, CT-PH-0508, ME-RI015
NH-253700 A & B, USDA S-41844, NY-11726

If you have any questions regarding this work, or if we may be of further assistance, please contact our customer service department.


Approved by:

Mike Hobin
Data Reporting

enc: Chain of Custody

R.I. Analytical Laboratories, Inc.
CERTIFICATE OF ANALYSIS

GZA / Geoenvironmental, Inc.
 Date Received: 5/14/07
 Work Order #: 0705-07630


Approved by: 
 Data Reporting

Sample # 001
SAMPLE DESCRIPTION: REAR YARD SOIL
SAMPLE TYPE: COMPOSITE **SAMPLE DATE/TIME:** 5/11/2007

PARAMETER	SAMPLE RESULTS	DET. LIMIT	UNITS	METHOD	DATE ANALYZED	ANALYST
TPH						
TPH GC/FID	7400	55	mg/kg dry	SW846 8100M	5/15/07	CDC
Moisture	10		%	SM2540 G.	5/14/07	VMY
Extraction date	Extracted			SW846 3545	5/15/07	VMY
Volatile Organic Compounds						
Benzene	<0.2	0.2	mg/kg dry	5035/8260B	5/15/07	MLC
Bromobenzene	<0.2	0.2	mg/kg dry	5035/8260B	5/15/07	MLC
Bromochloromethane	<0.4	0.4	mg/kg dry	5035/8260B	5/15/07	MLC
Bromodichloromethane	<0.1	0.1	mg/kg dry	5035/8260B	5/15/07	MLC
Bromoform	<0.1	0.1	mg/kg dry	5035/8260B	5/15/07	MLC
Bromomethane	<1.0	1.0	mg/kg dry	5035/8260B	5/15/07	MLC
n-Butylbenzene	1.6	0.2	mg/kg dry	5035/8260B	5/15/07	MLC
Sec-butylbenzene	0.8	0.2	mg/kg dry	5035/8260B	5/15/07	MLC
tert-Butylbenzene	0.8	0.2	mg/kg dry	5035/8260B	5/15/07	MLC
Carbon Tetrachloride	<0.2	0.2	mg/kg dry	5035/8260B	5/15/07	MLC
Chlorobenzene	<0.2	0.2	mg/kg dry	5035/8260B	5/15/07	MLC
Chloroethane	<0.5	0.5	mg/kg dry	5035/8260B	5/15/07	MLC
Chloroform	<0.1	0.1	mg/kg dry	5035/8260B	5/15/07	MLC
Chloromethane	<0.5	0.5	mg/kg dry	5035/8260B	5/15/07	MLC
2-Chlorotoluene	<0.2	0.2	mg/kg dry	5035/8260B	5/15/07	MLC
4-Chlorotoluene	<0.2	0.2	mg/kg dry	5035/8260B	5/15/07	MLC
Dibromochloromethane	<0.2	0.2	mg/kg dry	5035/8260B	5/15/07	MLC
1,2-Dibromo-3-Chloropropane	<0.4	0.4	mg/kg dry	5035/8260B	5/15/07	MLC
1,2-Dibromoethane(EDB)	<0.1	0.1	mg/kg dry	5035/8260B	5/15/07	MLC
Dibromomethane	<0.2	0.2	mg/kg dry	5035/8260B	5/15/07	MLC
1,2-Dichlorobenzene	0.3	0.2	mg/kg dry	5035/8260B	5/15/07	MLC
1,3-Dichlorobenzene	<0.2	0.2	mg/kg dry	5035/8260B	5/15/07	MLC
1,4-Dichlorobenzene	<0.2	0.2	mg/kg dry	5035/8260B	5/15/07	MLC
Dichlorodifluoromethane	<0.5	0.5	mg/kg dry	5035/8260B	5/15/07	MLC
1,1-Dichloroethane	<0.2	0.2	mg/kg dry	5035/8260B	5/15/07	MLC
1,2-Dichloroethane	<0.1	0.1	mg/kg dry	5035/8260B	5/15/07	MLC
1,1-Dichloroethene	<0.2	0.2	mg/kg dry	5035/8260B	5/15/07	MLC
cis-1,2-Dichloroethene	8.9	0.2	mg/kg dry	5035/8260B	5/15/07	MLC
trans-1,2-Dichloroethylene	0.5	0.2	mg/kg dry	5035/8260B	5/15/07	MLC
1,2-Dichloropropane	<0.1	0.1	mg/kg dry	5035/8260B	5/15/07	MLC
1,3-Dichloropropane	<0.2	0.2	mg/kg dry	5035/8260B	5/15/07	MLC
2,2-Dichloropropane	<0.2	0.2	mg/kg dry	5035/8260B	5/15/07	MLC
1,1-Dichloropropene	<0.2	0.2	mg/kg dry	5035/8260B	5/15/07	MLC
Ethylbenzene	0.6	0.2	mg/kg dry	5035/8260B	5/15/07	MLC
Hexachlorobutadiene	<0.2	0.2	mg/kg dry	5035/8260B	5/15/07	MLC

R.I. Analytical Laboratories, Inc.
CERTIFICATE OF ANALYSIS

GZA / Geoenvironmental, Inc.
 Date Received: 5/14/07
 Work Order #: 0705-07630

Approved by: 
 Data Reporting

Sample # 001
 SAMPLE DESCRIPTION: REAR YARD SOIL
 SAMPLE TYPE: COMPOSITE
 SAMPLE DATE/TIME: 5/11/2007

PARAMETER	SAMPLE RESULTS	DET. LIMIT	UNITS	METHOD	DATE ANALYZED	ANALYST
Isopropylbenzene	0.3	0.2	mg/kg dry	5035/8260B	5/15/07	MLC
p-Isopropyltoluene	0.6	0.2	mg/kg dry	5035/8260B	5/15/07	MLC
Methylene Chloride	<0.1	0.1	mg/kg dry	5035/8260B	5/15/07	MLC
Naphthalene	2.3	0.2	mg/kg dry	5035/8260B	5/15/07	MLC
n-Propylbenzene	0.8	0.2	mg/kg dry	5035/8260B	5/15/07	MLC
Styrene	<0.2	0.2	mg/kg dry	5035/8260B	5/15/07	MLC
1,1,1,2-Tetrachloroethane	<0.1	0.1	mg/kg dry	5035/8260B	5/15/07	MLC
1,1,2,2-Tetrachloroethane	<0.2	0.2	mg/kg dry	5035/8260B	5/15/07	MLC
Tetrachloroethene	3.7	0.2	mg/kg dry	5035/8260B	5/15/07	MLC
Toluene	<0.2	0.2	mg/kg dry	5035/8260B	5/15/07	MLC
1,2,3-Trichlorobenzene	<0.2	0.2	mg/kg dry	5035/8260B	5/15/07	MLC
1,2,4-Trichlorobenzene	<0.2	0.2	mg/kg dry	5035/8260B	5/15/07	MLC
1,1,1-Trichloroethane	<0.2	0.2	mg/kg dry	5035/8260B	5/15/07	MLC
1,1,2-Trichloroethane	<0.1	0.1	mg/kg dry	5035/8260B	5/15/07	MLC
Trichloroethene	2.1	0.2	mg/kg dry	5035/8260B	5/15/07	MLC
Trichlorofluoromethane	<0.2	0.2	mg/kg dry	5035/8260B	5/15/07	MLC
1,2,3-Trichloropropane	<0.2	0.2	mg/kg dry	5035/8260B	5/15/07	MLC
1,2,4-Trimethylbenzene	5.5	0.2	mg/kg dry	5035/8260B	5/15/07	MLC
1,3,5-Trimethylbenzene	2.2	0.2	mg/kg dry	5035/8260B	5/15/07	MLC
Vinyl Chloride	2.1	0.2	mg/kg dry	5035/8260B	5/15/07	MLC
o-Xylene	0.9	0.2	mg/kg dry	5035/8260B	5/15/07	MLC
m,p-Xylene	0.6	0.2	mg/kg dry	5035/8260B	5/15/07	MLC
Total Xylene	1.5	0.2	mg/kg dry	5035/8260B	5/15/07	MLC
Methyl Tertiary Butyl Ether (MTBE)	<0.1	0.1	mg/kg dry	5035/8260B	5/15/07	MLC
Acetone	<2.0	2.0	mg/kg dry	5035/8260B	5/15/07	MLC
2-Butanone(MEK)	<0.3	0.3	mg/kg dry	5035/8260B	5/15/07	MLC
Tetrahydrofuran	<1.0	1.0	mg/kg dry	5035/8260B	5/15/07	MLC
Carbon Disulfide	<0.5	0.5	mg/kg dry	5035/8260B	5/15/07	MLC
4-Methyl-2-pentanone(MIBK)	<0.5	0.5	mg/kg dry	5035/8260B	5/15/07	MLC
2-Hexanone	<1.0	1.0	mg/kg dry	5035/8260B	5/15/07	MLC
cis-1,3-Dichloropropene	<0.2	0.2	mg/kg dry	5035/8260B	5/15/07	MLC
trans-1,3-Dichloropropylene	<0.2	0.2	mg/kg dry	5035/8260B	5/15/07	MLC
Moisture	10		%	SM2540 G.	5/14/07	VMY
Surrogates			RANGE	5035/8260B	5/15/07	MLC
Dibromofluoromethane	100		70-130%	5035/8260B	5/15/07	MLC
Toluene-d8	112		70-130%	5035/8260B	5/15/07	MLC
4-Bromofluorobenzene	135*		70-130%	5035/8260B	5/15/07	MLC
1,2 Dichloroethane-d4	105		70-130%	5035/8260B	5/15/07	MLC

* Surrogate is outside acceptance criteria due to obvious chromatographic interference.



CERTIFICATE OF ANALYSIS

GZA / Geoenvironmental, Inc.
Attn: Mr. Steve Andrus
140 Broadway
Providence, RI 02903

Date Received: 5/21/07
Date Reported: 5/23/07
P.O. #:
Work Order #: 0705-08076

DESCRIPTION: GZA FILE# 32795.19 CHARBERT

Subject sample(s) has/have been analyzed by our Warwick, R.I. laboratory with the attached results.

Reference: All parameters were analyzed by U.S. EPA approved methodologies and all NELAC requirements were met. The specific methodologies are listed in the methods column of the Certificate Of Analysis.

Data qualifiers (if present) are explained in full at the end of a given sample's analytical results.

Certification #: RI-033, MA-RI015, CT-PH-0508, ME-RI015
NH-253700 A & B, USDA S-41844, NY-11726

If you have any questions regarding this work, or if we may be of further assistance, please contact our customer service department.

Approved by:

Mike Hobin
Data Reporting

enc: Chain of Custody


R.I. Analytical Laboratories, Inc.

CERTIFICATE OF ANALYSIS

GZA / Geoenvironmental, Inc.

Date Received: 5/21/07

Work Order #: 0705-08076

Approved by: 

Data Reporting

Sample # 001

SAMPLE DESCRIPTION: REAR YARD SOIL

SAMPLE TYPE: COMPOSITE

SAMPLE DATE/TIME: 5/21/2007

PARAMETER	SAMPLE RESULTS	DET. LIMIT	UNITS	METHOD	DATE ANALYZED	ANALYST
N-nitrosodimethylamine	<2	2	mg/kg dry	SW-846 8270C	5/22/07	KMP
N-nitrosodiphenylamine	<2	2	mg/kg dry	SW-846 8270C	5/22/07	KMP
N-nitrosodi-n-propylamine	<2	2	mg/kg dry	SW-846 8270C	5/22/07	KMP
Phenanthrene	11	2	mg/kg dry	SW-846 8270C	5/22/07	KMP
Pyrene	<2	2	mg/kg dry	SW-846 8270C	5/22/07	KMP
1,2,4-Trichlorobenzene	<2	2	mg/kg dry	SW-846 8270C	5/22/07	KMP
4-Chloro-3-methylphenol	<2	2	mg/kg dry	SW-846 8270C	5/22/07	KMP
2-Chlorophenol	<2	2	mg/kg dry	SW-846 8270C	5/22/07	KMP
2,4-Dichlorophenol	<2	2	mg/kg dry	SW-846 8270C	5/22/07	KMP
2,4-Dimethylphenol	<2	2	mg/kg dry	SW-846 8270C	5/22/07	KMP
2-Methyl-4,6-dinitrophenol	<4	4	mg/kg dry	SW-846 8270C	5/22/07	KMP
2,4-Dinitrophenol	<4	4	mg/kg dry	SW-846 8270C	5/22/07	KMP
2-Nitrophenol	<2	2	mg/kg dry	SW-846 8270C	5/22/07	KMP
4-Nitrophenol	<2	2	mg/kg dry	SW-846 8270C	5/22/07	KMP
Pentachlorophenol	<4	4	mg/kg dry	SW-846 8270C	5/22/07	KMP
Phenol	<2	2	mg/kg dry	SW-846 8270C	5/22/07	KMP
2,4,6-Trichlorophenol	<2	2	mg/kg dry	SW-846 8270C	5/22/07	KMP
Moisture	7		%	SM2540 G.	5/22/07	RAS
Surrogates			RANGE	SW-846 8270C	5/22/07	KMP
Phenol-d5	110		15-110%	SW-846 8270C	5/22/07	KMP
2-Fluorophenol	76		15-110%	SW-846 8270C	5/22/07	KMP
2,4,6-Tribromophenol	114		15-110%	SW-846 8270C	5/22/07	KMP
Nitrobenzene-d5	116		30-130%	SW-846 8270C	5/22/07	KMP
2-Fluorobiphenyl	91		30-130%	SW-846 8270C	5/22/07	KMP
P-Terphenyl-d14	190		30-130%	SW-846 8270C	5/22/07	KMP
Extraction date	Extracted			SW846 3545	5/21/07	VMY
Total Metals						
Arsenic	6.5	2.6	mg/kg dry	SW-846 6010	5/22/07	REA
Barium	21	0.53	mg/kg dry	SW-846 6010	5/22/07	REA
Cadmium	<0.26	0.26	mg/kg dry	SW-846 6010	5/22/07	REA
Chromium	18	1.6	mg/kg dry	SW-846 6010	5/22/07	REA
Lead	17	2.1	mg/kg dry	SW-846 6010	5/22/07	REA
Mercury	<0.12	0.12	mg/kg dry	SW-846 7471A	5/22/07	LW
Selenium	<11	11	mg/kg dry	SW-846 6010	5/22/07	REA
Silver	<1.1	1.1	mg/kg dry	SW-846 6010	5/22/07	REA

Method 8270:

Detection limit increased due to non-target interference.

APPENDIX B

BILL OF LADING

This Memorandum is an acknowledgment that a Bill of Lading has been issued and is not the Original Bill of Lading, nor a copy or duplicate, covering the property named herein, and is intended solely for filing or record.

Shipper's # BAUBAE Carrier BAUBAE Agent's No. MEG

RECEIVED, subject to the classifications and tariffs in effect on the date of the receipt by the carrier of the property described in the Original Bill of Lading, at 299 Church St from Ch. Hubert MEG

Consigned to ESMT (Mail or street address of consignee - For purposes of notification only)
 Destination 65 Irving Dr. Loudon State of NH Zip Code _____ County of _____
 Routing _____ Delivering Carrier BAUBAE Vehicle- DT4 No. 74
 or Car Initial _____

Collect On Delivery \$ _____ and remit to: _____
 C. O. D. charge to be paid by Shipper Consignee

Subject to Section 7 of conditions, if this shipment is to be delivered to the consignee without recourse on the consignor, the consignor shall sign the following statements:
 The carrier shall not make delivery of this shipment without payment of freight and all other lawful charges.

(Signature of Consignor) _____
 If charges are to be prepaid, write or stamp here, "TO BE PREPAID."

Received \$ _____ to apply to prepayment of the charges on the property described hereon.
 Agent or Cashier _____

Per _____ (the signature here acknowledges only the amount prepaid.)
 Charges Advanced: \$ _____

No. Packages	Description of Articles, Special Marks, and Exceptions	Weight (Sub. to Car.)	Class or Rate	City	State	Check Column
1	Non Hazardous Poly Foils For Recycle	ESTD 22.5 Tons				
		ACTUAL ⇒ 22.43				

*If the shipment moves between two ports by a carrier by water, the law requires that the bill of lading shall state whether it is "carrier's or shipper's weight." NOTE - Where the rate is dependent on value, shippers are required to state specifically in writing the agreed or declared value of the property.
 The agreed or declared value of the property is hereby specifically stated by the shipper to be not exceeding _____ per _____

Shipper, Per _____ Agent, Per _____ 3

Per mailing post-office address of shipper, _____ (This Bill of Lading is to be signed by the shipper and agent of the carrier issuing same.)