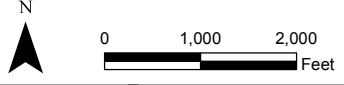




1:24,000 scale digital topographic map  
obtained from Rhode Island Geographic  
Information System (RIGIS) at:  
<http://www.edc.uri.edu/rigis>



Prepared/Date: BJR 01/10/12  
Checked/Date: DEH 01/10/12

333 Adelaide Avenue  
Providence, RI

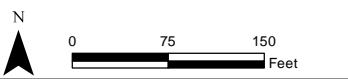


Site Location Map

Project 3650-11-0222

Figure 1.1

Document: P:\old\_wakefield\_data\projects\TEXTORNGORHAM\GIS\MapDocuments\SIR 2012\RAWIP\_11x17\_P.mxd PDF: P:\old\_wakefield\_data\projects\652130029 - Texton Gorham Updated Cove SIR\4.0 Project Deliverables\4.1 Reports\SIR\FIGURES\Figure 1.2 Site Plan.pdf



Legend  
 Approximate Parcel Boundary

Note: 2011 Ortho photo obtained from Rhode Island Geographic Information System (RGIS)

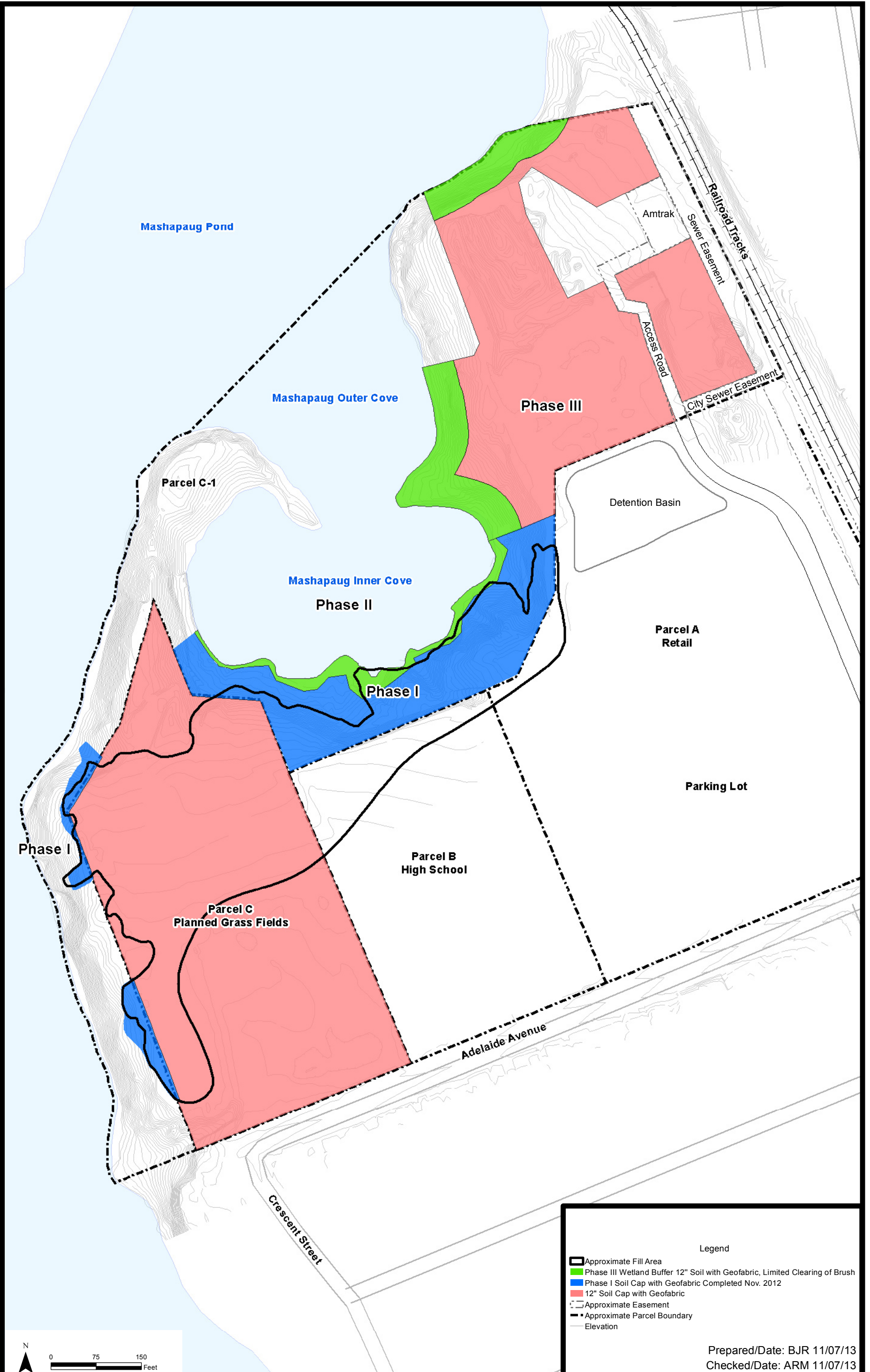
Prepared/Date: BJR 10/17/13  
 Checked/Date: ARM 10/17/13

Former Gorham Manufacturing Site  
 333 Adelaide Avenue  
 Providence, RI



Site Plan  
 Project 3650-11-0222  
 Figure 1.2

Document: P:\old\_wakefield\_Data\projects\TEXT\GORHAM\GIS\MapDocuments\SIR 2012\RAWP\_11x17\_P.mxd PDF: P:\old\_wakefield\_Data\projects\652130029 - Texton\_Gorham\_Updated\_Cove\_SIR\4.0 Project Deliverables\4.1 Reports\SIR\FIGURES\Figure 1.3 Parcel C-1 and Parcel C Remediation.pdf



Former Gorham Manufacturing Site  
333 Adelaide Avenue  
Providence, RI



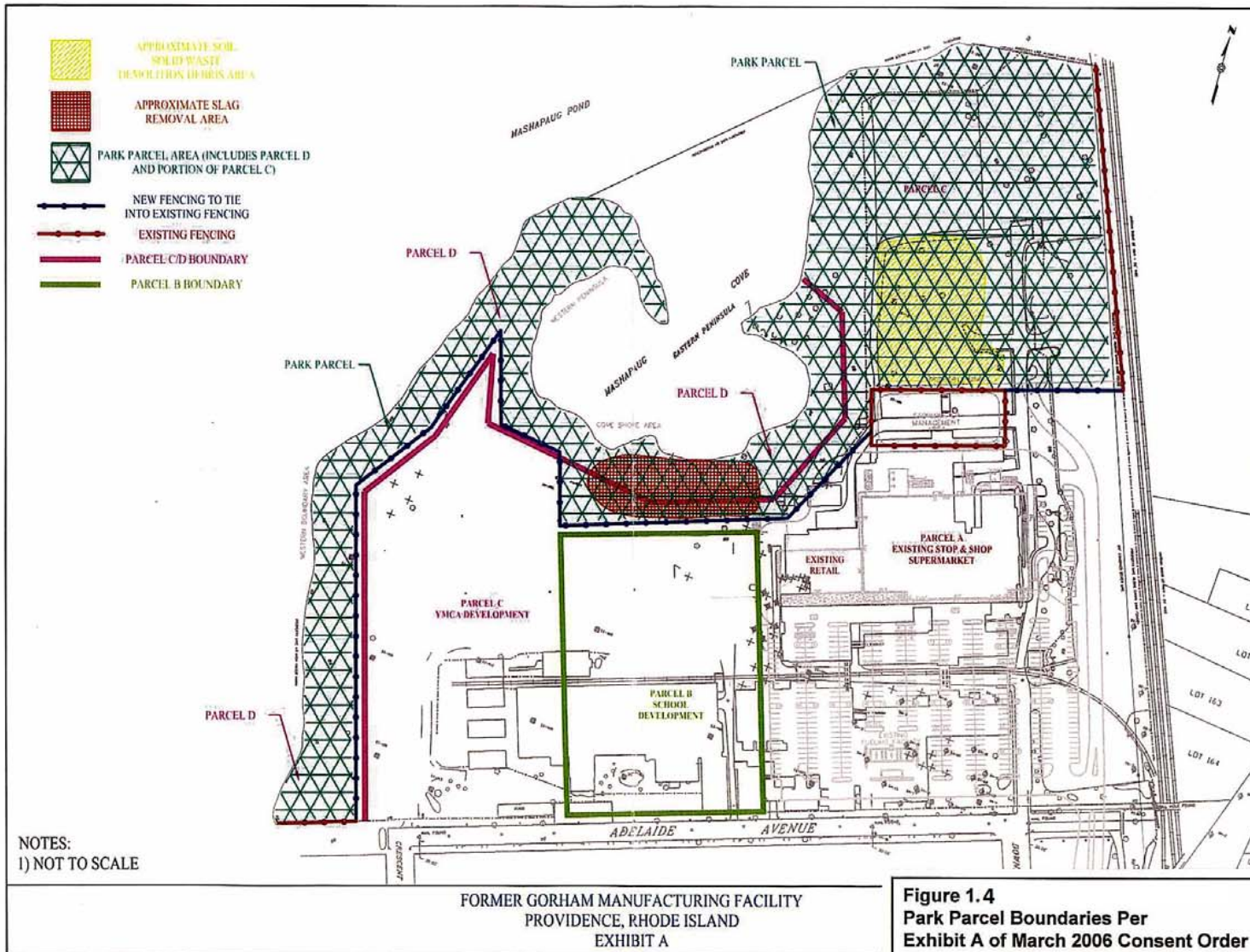
Parcel C-1 and Parcel C Remediation  
Project 3650-11-0222

Figure 1.3

Legend

- Approximate Fill Area
- Phase III Wetland Buffer 12" Soil with Geofabric, Limited Clearing of Brush
- Phase I Soil Cap with Geofabric Completed Nov. 2012
- 12" Soil Cap with Geofabric
- Approximate Easement
- Approximate Parcel Boundary
- Elevation

Prepared/Date: BJR 11/07/13  
Checked/Date: ARM 11/07/13

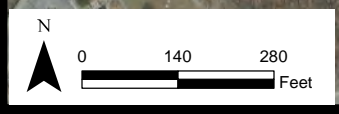




**Legend**

- ▲ URI Sediment Sample Location 1986
- ▼ URI Surface Water Sample Location 1986
- ▼ GZA Surface Water Sample Location 1986
- ▲ RIDEM Sediment Sample Location 1987
- ▼ RIDEM Surface Water Sample Location 1987
- ▲ RIDEM Sediment Sample Location 2005
- ▼ USEPA Water Column Station Surface Water Sampling 2001
- ▼ Surface Water Sample SW-1 through SW-4 were collected on April 15, 1999 by Harding Lawson Associates.
- ▲ Sediment Samples Cove-1 through Cove-3 were collected by R. Dorr on September 5, 2005
- Approximate Site Boundary

Prepared/Date: BJR 10/11/12  
 Checked/Date: DEH 10/11/12



333 Adelaide Avenue Site  
 Providence, Rhode Island



Historic Surface Water  
 and Sediment Sample Locations  
 Project 3650-11-0222 Figure 2.1

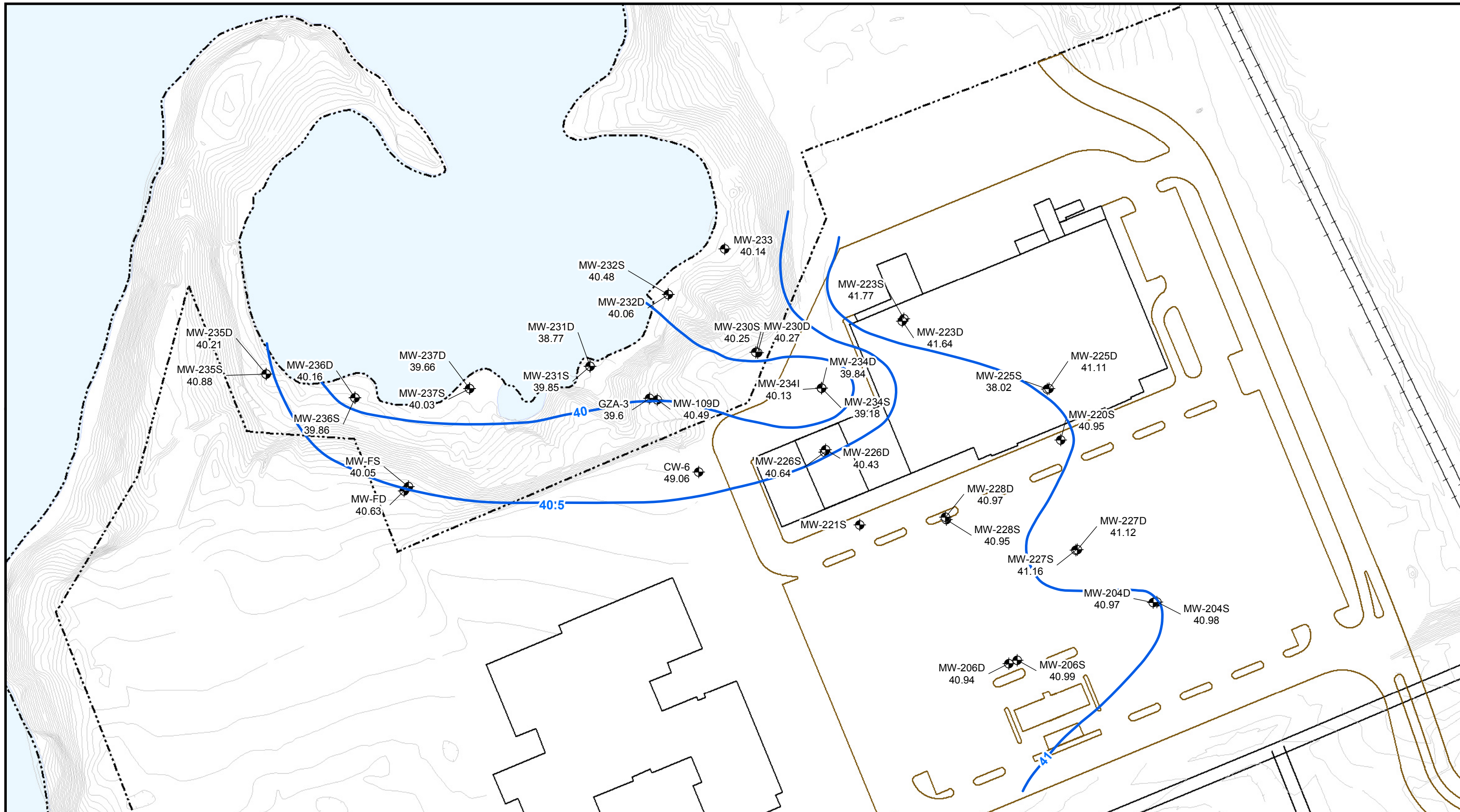
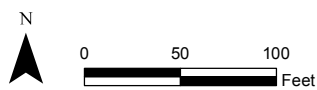


Figure 2.2  
Groundwater Elevation Contour Map  
December 2009

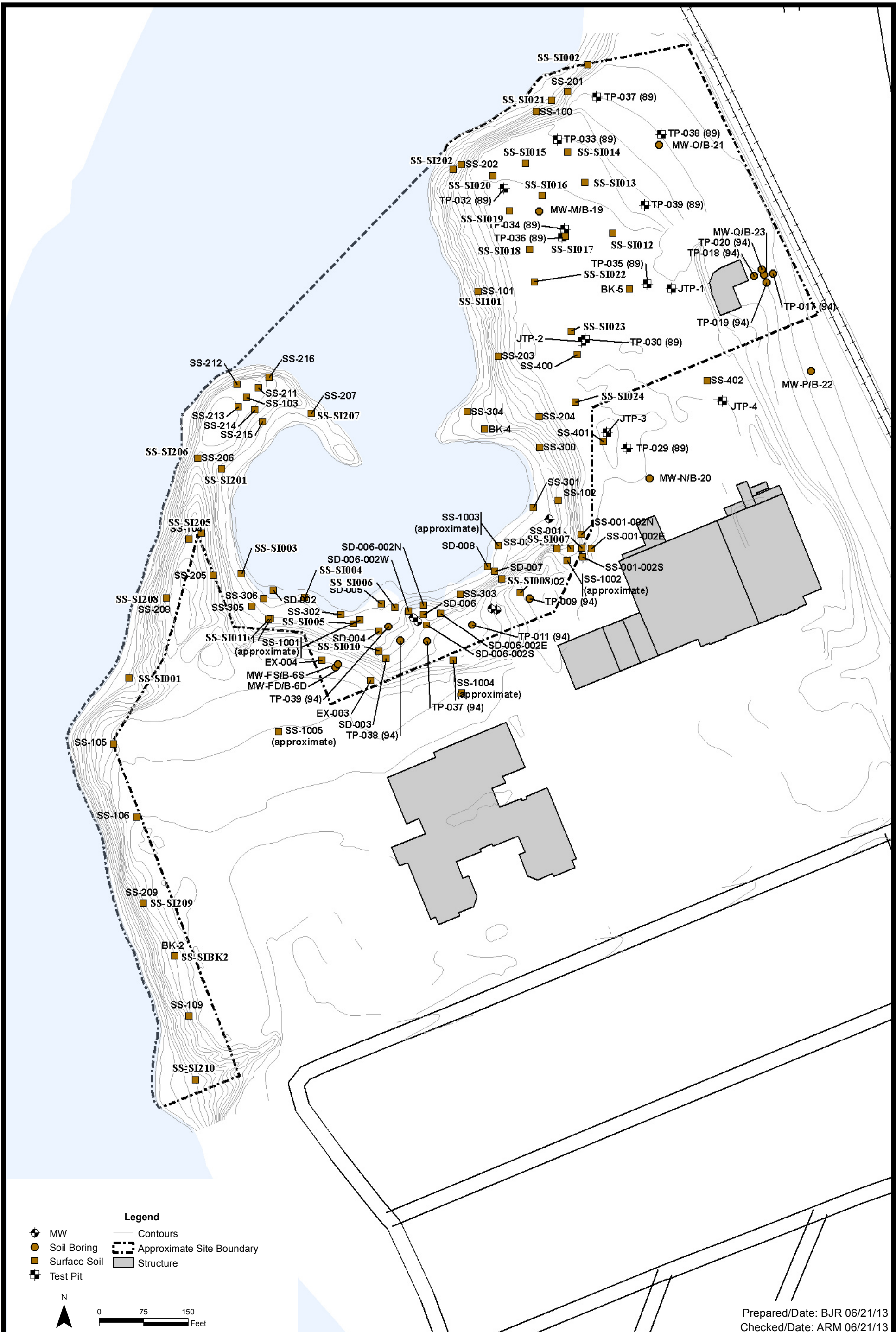
**Legend**

- Monitoring Well
- Groundwater Elevation Contour
- Pavement
- Railroad



Prepared/Date: BJR 10/11/12 | Checked/Date: DEH 10/11/12

333 Adelaide Avenue  
Providence, Rhode Island  
amec  
AMEC Environment & Infrastructure  
107 Audubon Rd, Suite 301  
Wakefield, Massachusetts 01880



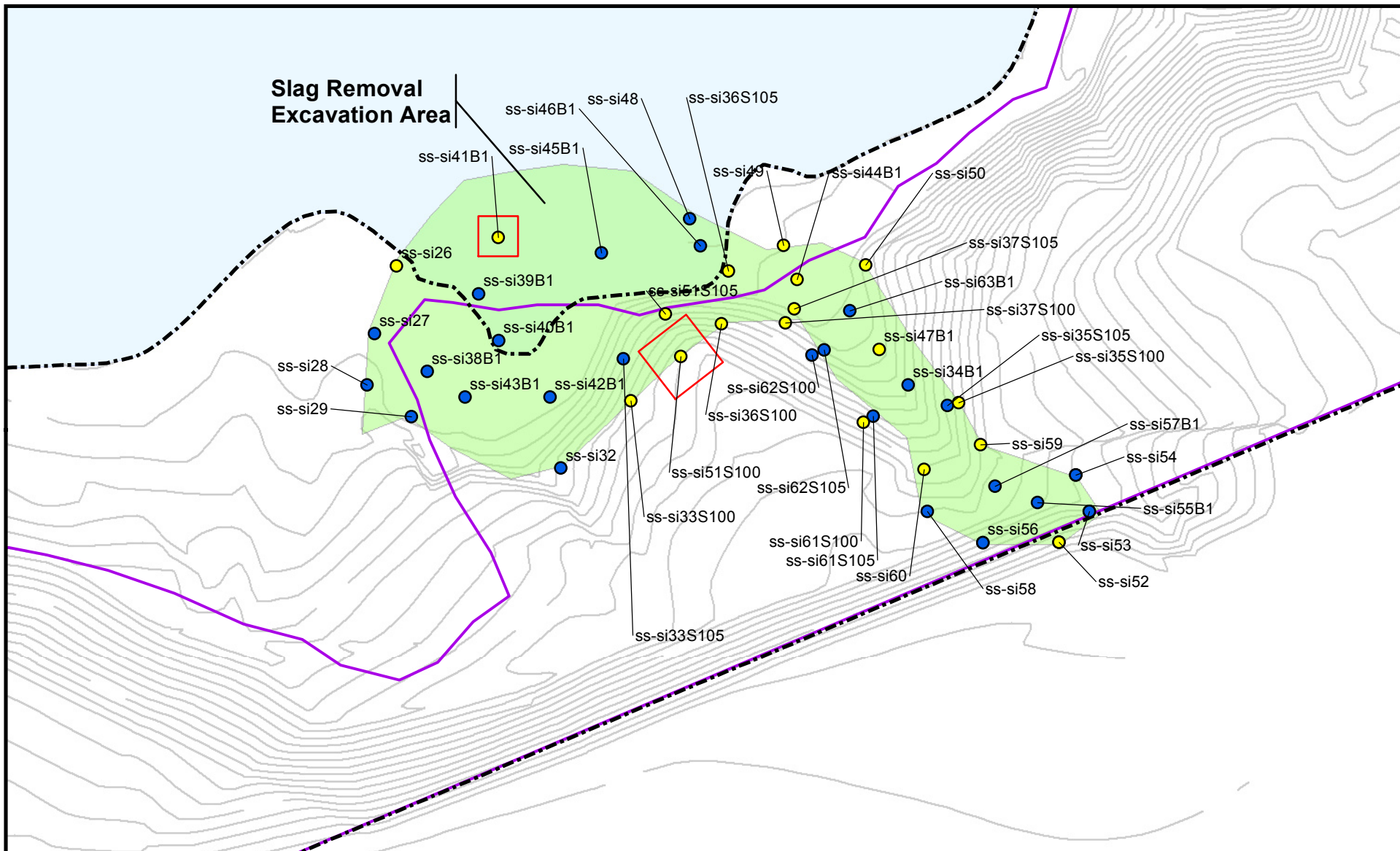
Prepared/Date: BJR 06/21/13  
 Checked/Date: ARM 06/21/13

333 Adelaide Avenue Site  
 Providence, Rhode Island



Summary of 1994-2007 Soil  
 Investigation Locations  
 Project 3650-11-0222

Figure 3.1



**Slag Removal  
Excavation Area**

**Legend**

- Lead > 500 mg/kg
- Lead < 500 mg/kg
- Approximate Site Boundary
- Approximate Fill Area
- Additional Soil Removal Area
- Former Slag Pile Area
- Mashapaug Cove
- Elevation\_CADD2011

Figure 3.2  
Supplemental Soil Excavation  
Former Slag Pile

333 Adelaide Avenue  
Providence, Rhode Island



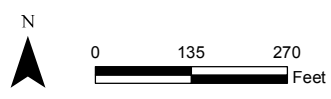
N  
0 17.5 35  
Feet  
Prepared by BJR | Checked by DEH





**Legend**

- ▲ Sediment Sample Location (2005-2006)
- ▼▲ Surface Water and Sediment Sample Location (2006)
- ▲ Sediment Sample Location (2011)
- ▼▲ Surface Water and Sediment Sample Location (2011)
- Approximate Site Boundary
- Approximate Pond



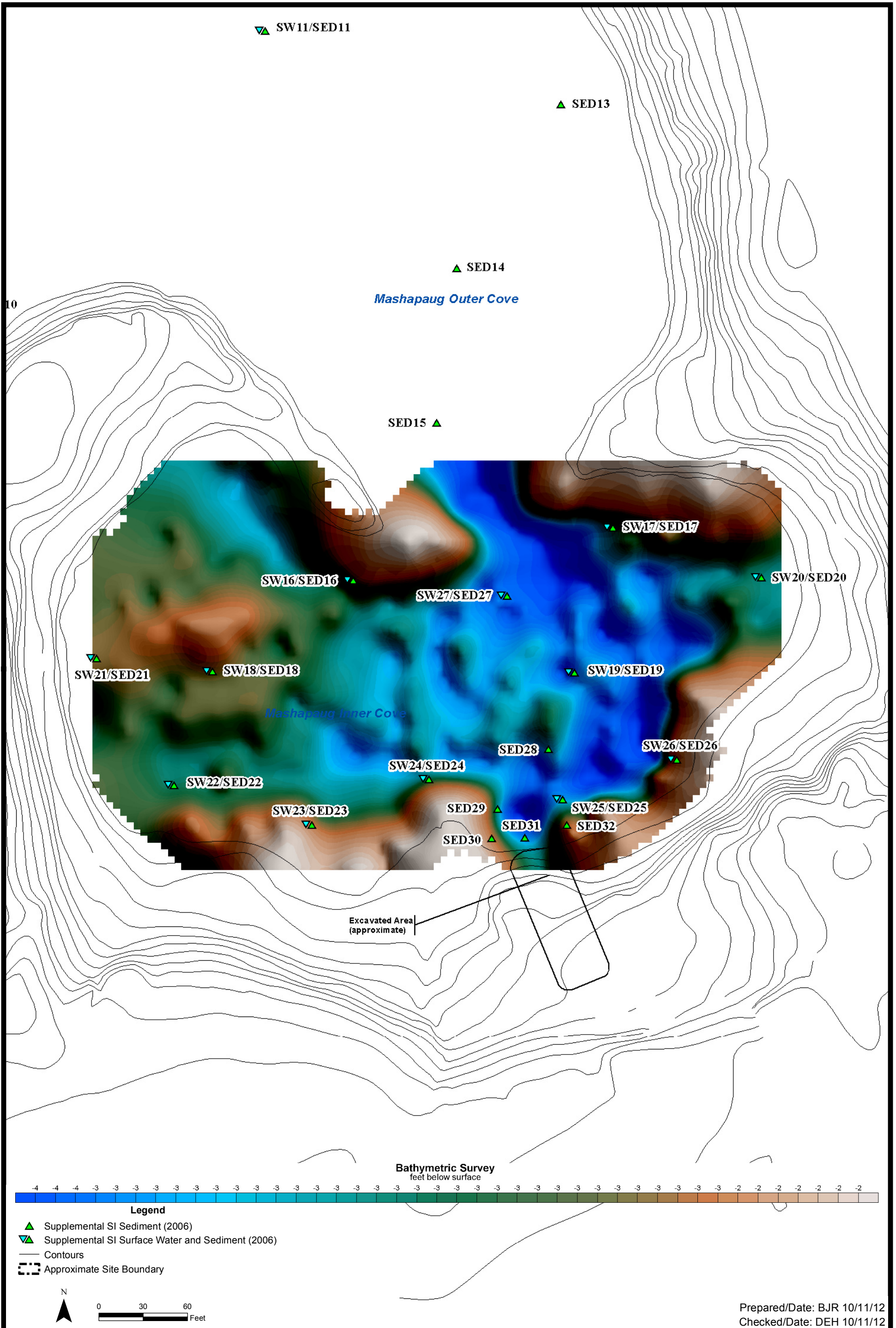
Prepared/Date: BJR 12/06/12  
 Checked/Date: MJM 12/06/12

333 Adelaide Avenue Site  
 Providence, Rhode Island



Surface Water and Sediment Sample  
 Locations 2005-2012  
 Project 3650-11-0222

Figure 3.3

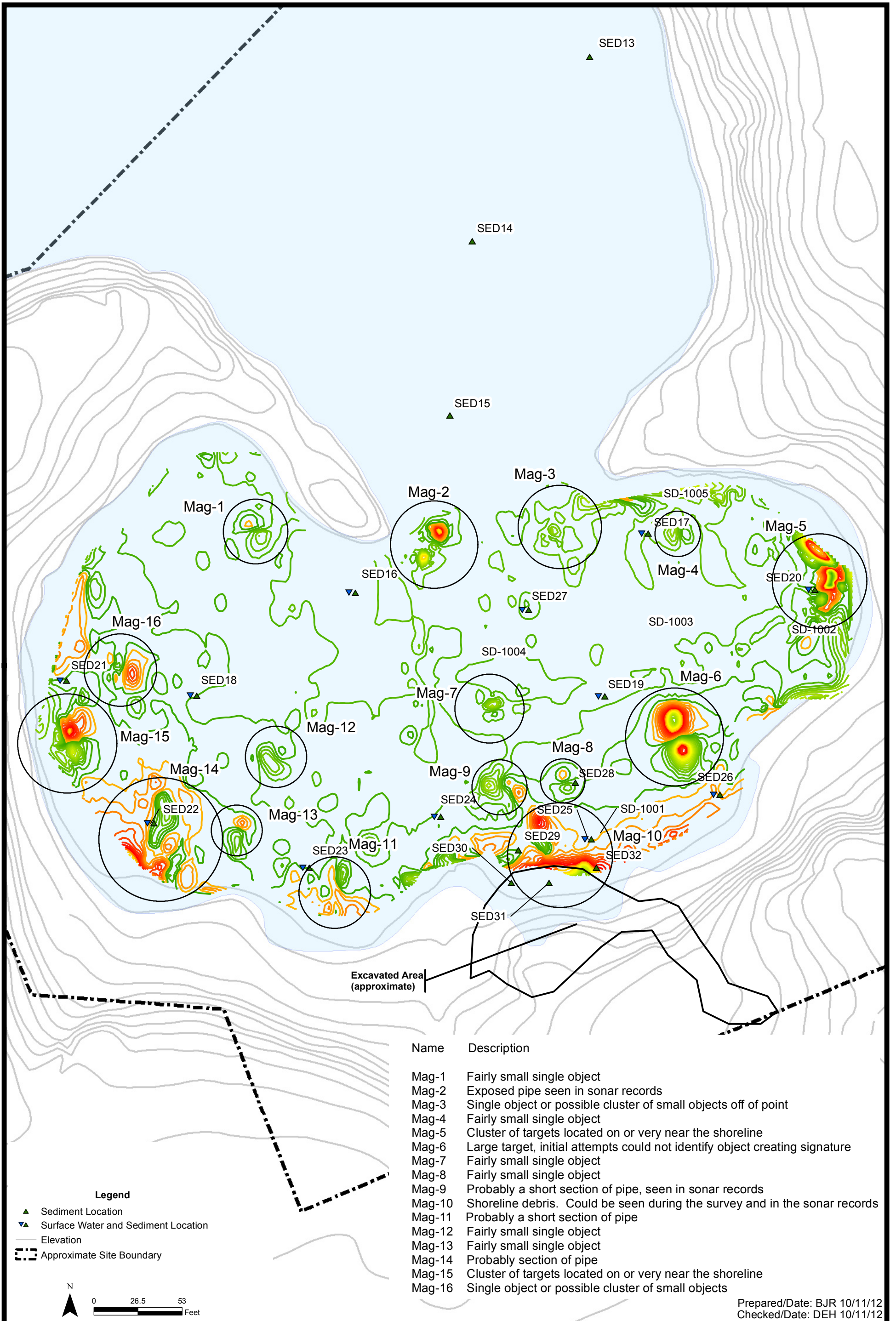


333 Adelaide Avenue  
Providence, Rhode Island



2006 Bathymetric Contours  
Mashapaug Inner Cove  
Project 3650-11-0222

Figure 3.4



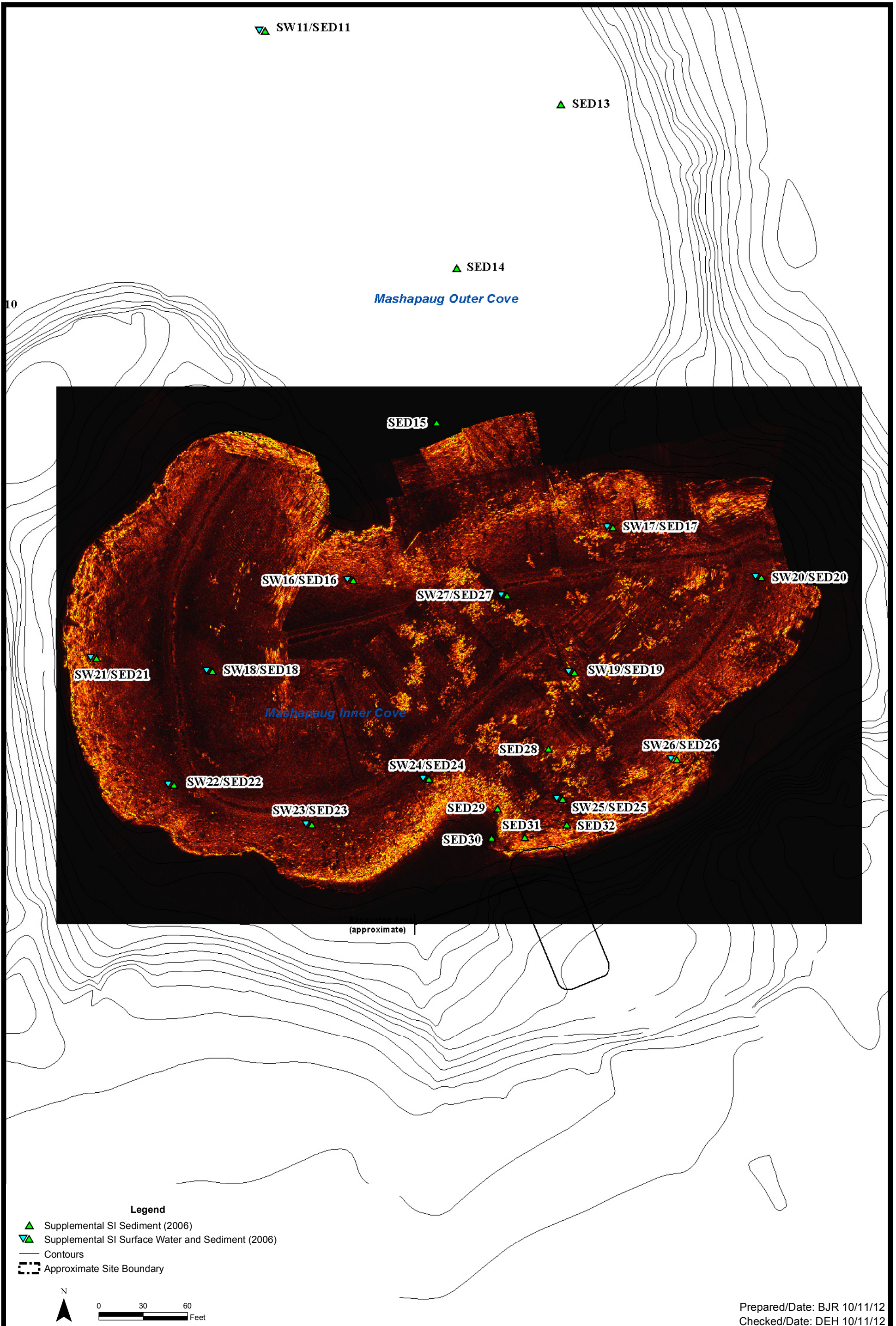
Name	Description
Mag-1	Fairly small single object
Mag-2	Exposed pipe seen in sonar records
Mag-3	Single object or possible cluster of small objects off of point
Mag-4	Fairly small single object
Mag-5	Cluster of targets located on or very near the shoreline
Mag-6	Large target, initial attempts could not identify object creating signature
Mag-7	Fairly small single object
Mag-8	Fairly small single object
Mag-9	Probably a short section of pipe, seen in sonar records
Mag-10	Shoreline debris. Could be seen during the survey and in the sonar records
Mag-11	Probably a short section of pipe
Mag-12	Fairly small single object
Mag-13	Fairly small single object
Mag-14	Probably section of pipe
Mag-15	Cluster of targets located on or very near the shoreline
Mag-16	Single object or possible cluster of small objects

Prepared/Date: BJR 10/11/12  
 Checked/Date: DEH 10/11/12

333 Adelaide Avenue  
 Providence, RI



2006 Magnetic Survey Results  
 Mashapaug Inner Cove  
 Project 3650-11-0222  
 Figure 3.5



**Legend**

- ▲ Supplemental SI Sediment (2006)
- ▼▲ Supplemental SI Surface Water and Sediment (2006)
- Contours
- Approximate Site Boundary

N

0 30 60 Feet

Prepared/Date: BJR 10/11/12  
 Checked/Date: DEH 10/11/12

333 Adelaide Avenue  
 Providence, Rhode Island



2006 Side Scan Sonar Mosaic  
 Mashapaug Inner Cove  
 Project 3650-11-0222  
 Figure 3.6



333 Adelaide Avenue Site  
Providence, Rhode Island



2011 Bathymetric Contours  
Mashapaug Pond  
Project 3650-11-0222

Figure 3.7

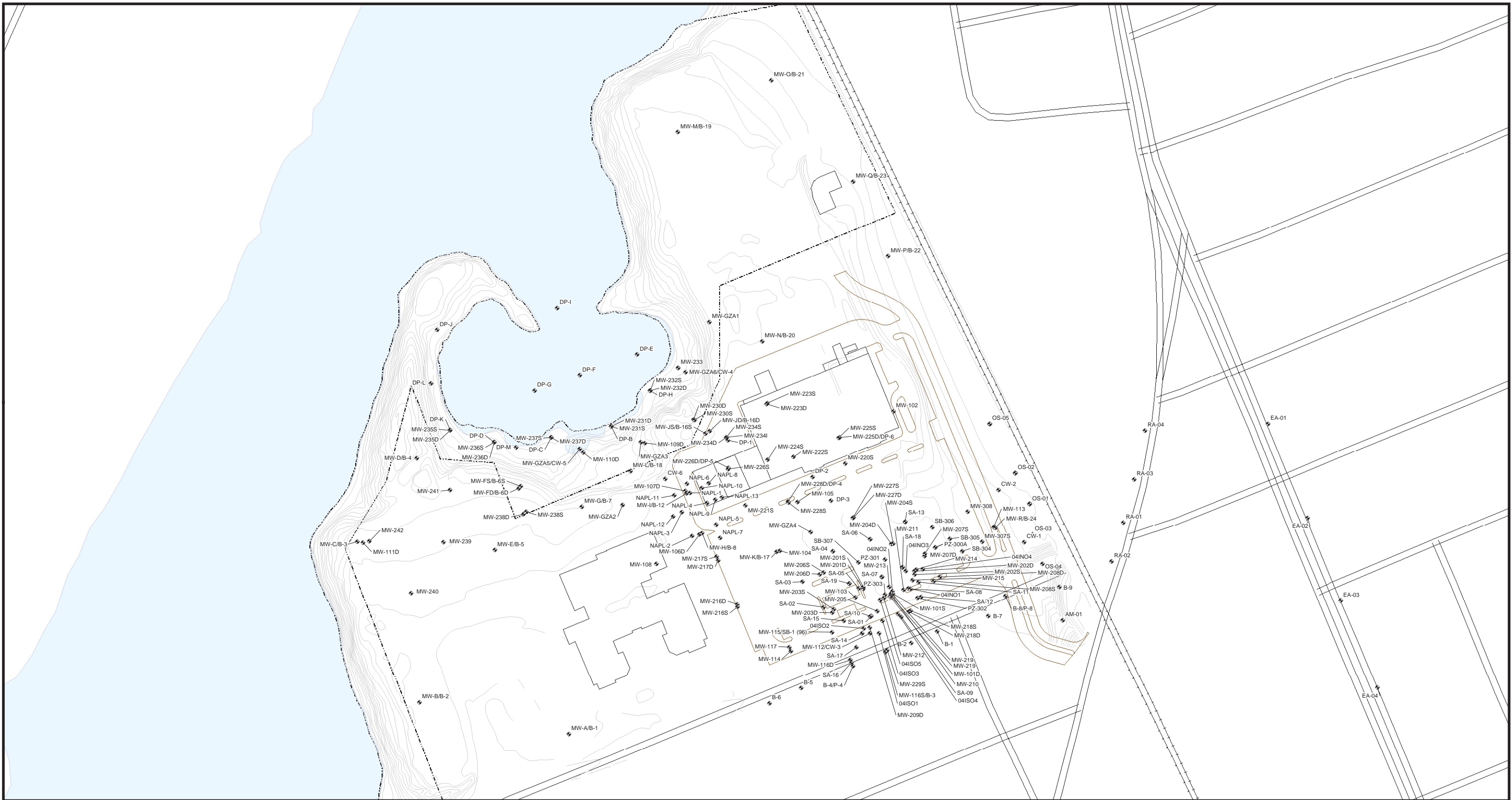


Figure 3.8  
Groundwater Sample Locations

**Legend**

- ◆ Groundwater Sample Location
- Elevation Contour
- +—+ Railroad
- Pavement
- ⋯ Park Parcel Boundary

0 50 100  
Feet

N

Prepared by BJR Checked by DEH

333 Adelaide Avenue  
Providence, Rhode Island

**amec** AMEC Environment & Infrastructure  
107 Audubon Road, Suite 301  
Wakefield, MA 01880

MXD: P:\TEXTROW\GORHAM\GIS\MapDocuments\Textrow\Gorham\_DS\Site.mxd PDF: P:\3650050041 - Textrow\Gorham\3.0 Field and Site Characterization\3.8 GIS\Cove Groundwater Sediment Jan 2010\Site Plan.pdf



**Figure 4.1 - Sediment Core SED50 – Inner Cove  
Sample Interval 0-8 feet  
December 2011 Sediment Sampling Program**

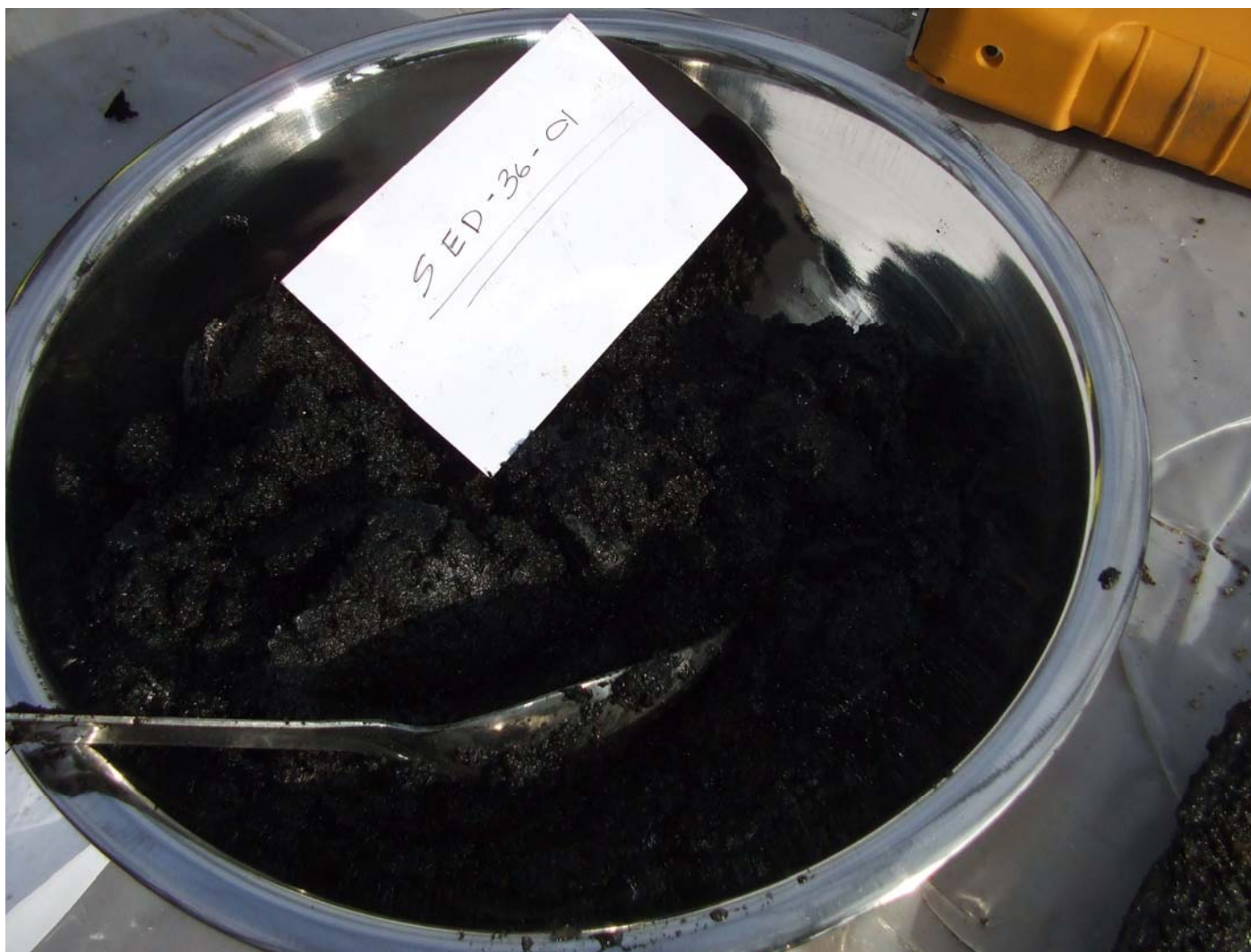


**Figure 4.2 - Sediment Core SED50 – Inner Cove  
Sample Interval 0-8 feet  
December 2011 Sediment Sampling Program**





Figure 4.3 - Sediment Core SED50 – Inner Cove  
Sample Interval 0-8 feet  
December 2011 Sediment Sampling Program



**Figure 4.4 - Sediment Core SED36 –  
Outer Cove in Channel  
Sample Interval 0-1 foot  
December 2011 Sediment Sampling Program**



**Figure 4.5 - Sediment Core SED36 –  
Outer Cove in Channel  
Sample Interval 1-8 feet  
December 2011 Sediment Sampling Program**



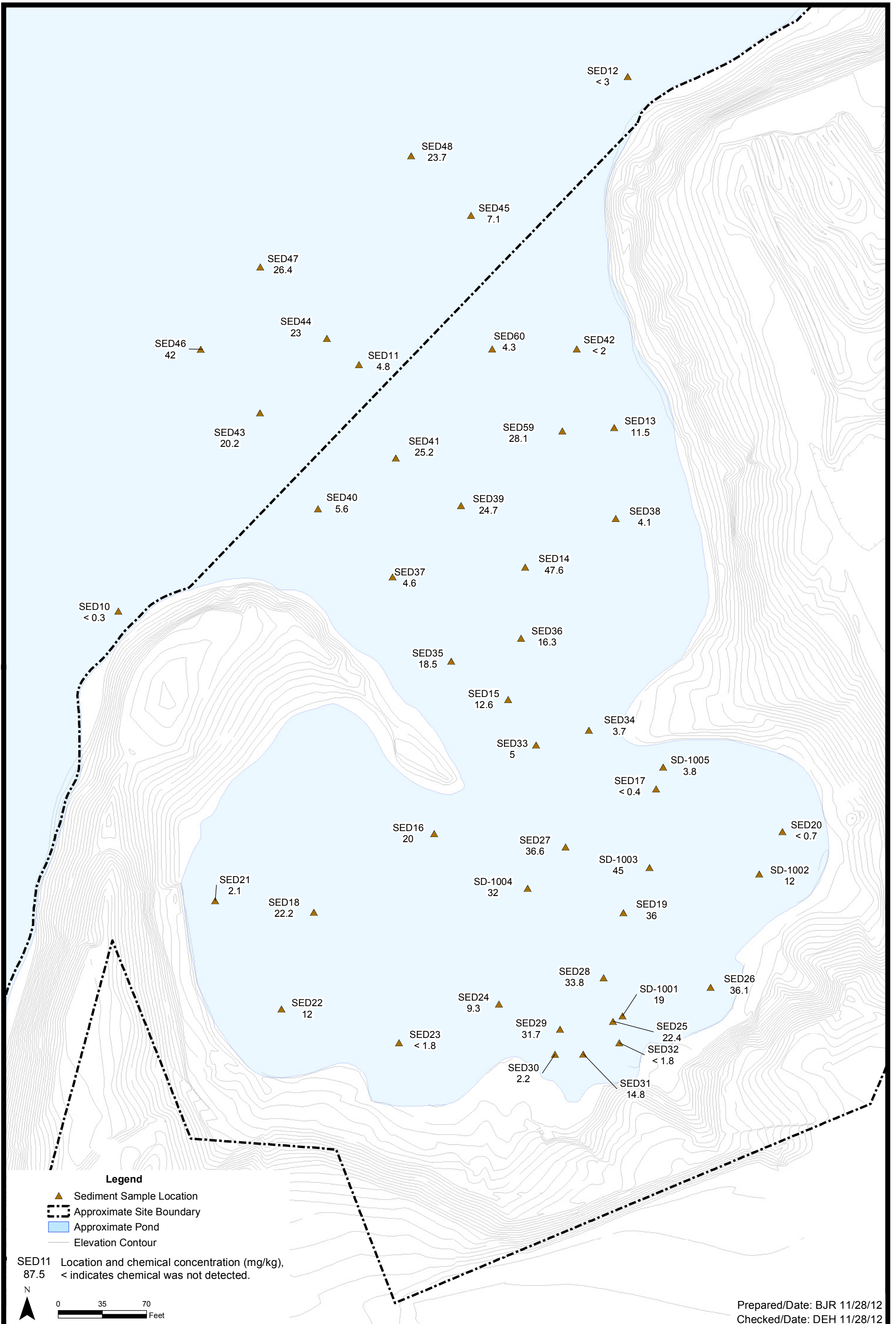
**Figure 4.6 - Sediment Core SED 36 –  
Outer Cove in Channel  
Sample Interval 1-8 feet  
December 2011 Sediment Sampling Program**



**Figure 4.7 - Sediment Core SED52 - Mashapaug Pond  
Sample Interval 0-1 foot  
December 2011 Sediment Sampling Program**



**Figure 4.8 - Sediment Core SED52 - Mashapaug Pond  
Sample Interval 1-4 feet  
December 2011 Sediment Sampling Program**

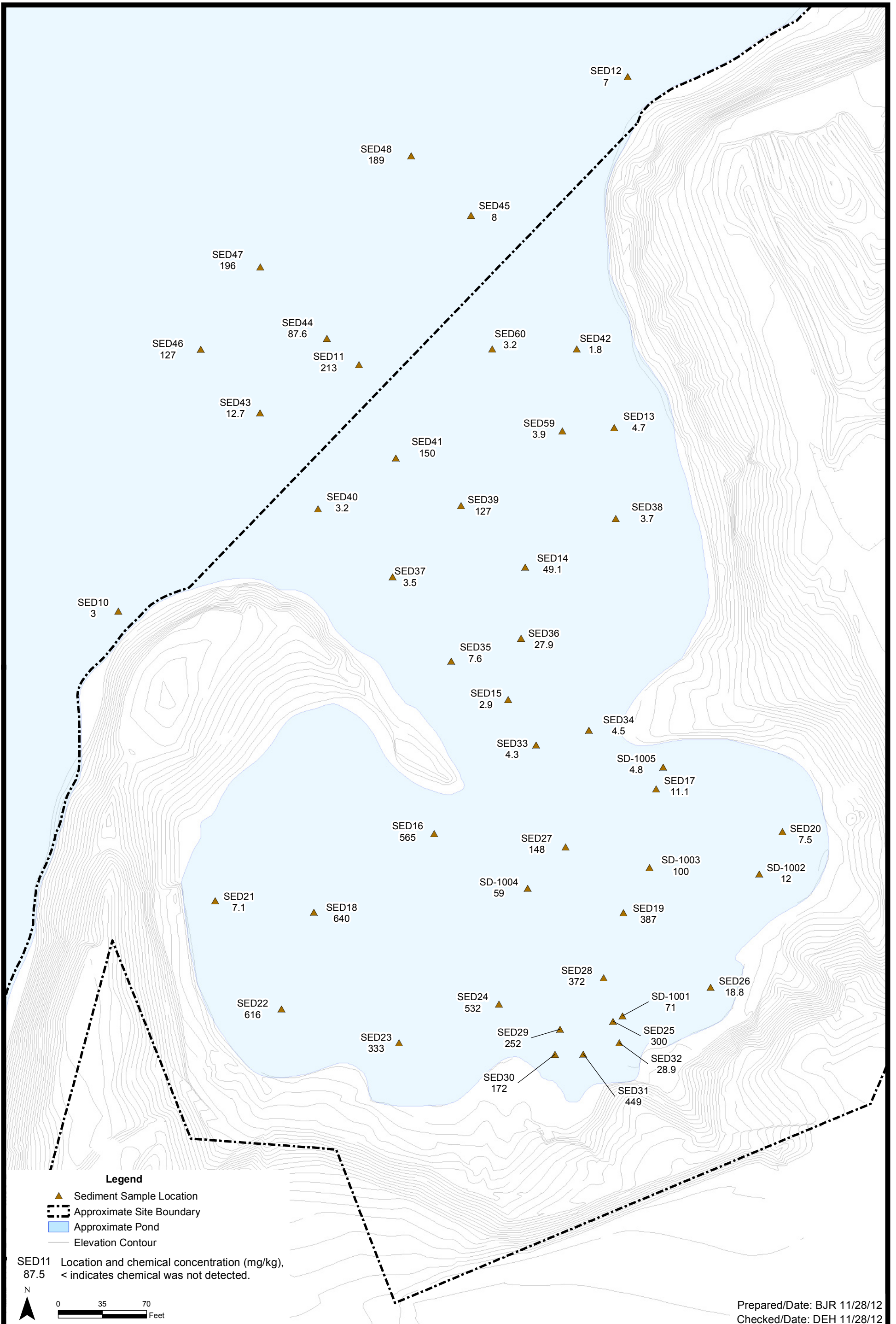


333 Adelaide Avenue Site  
Providence, Rhode Island



Concentrations of Arsenic in Surficial  
Sediment (0-1 ft or 0-2 ft)  
Project 3650-11-0222

Figure 4.9

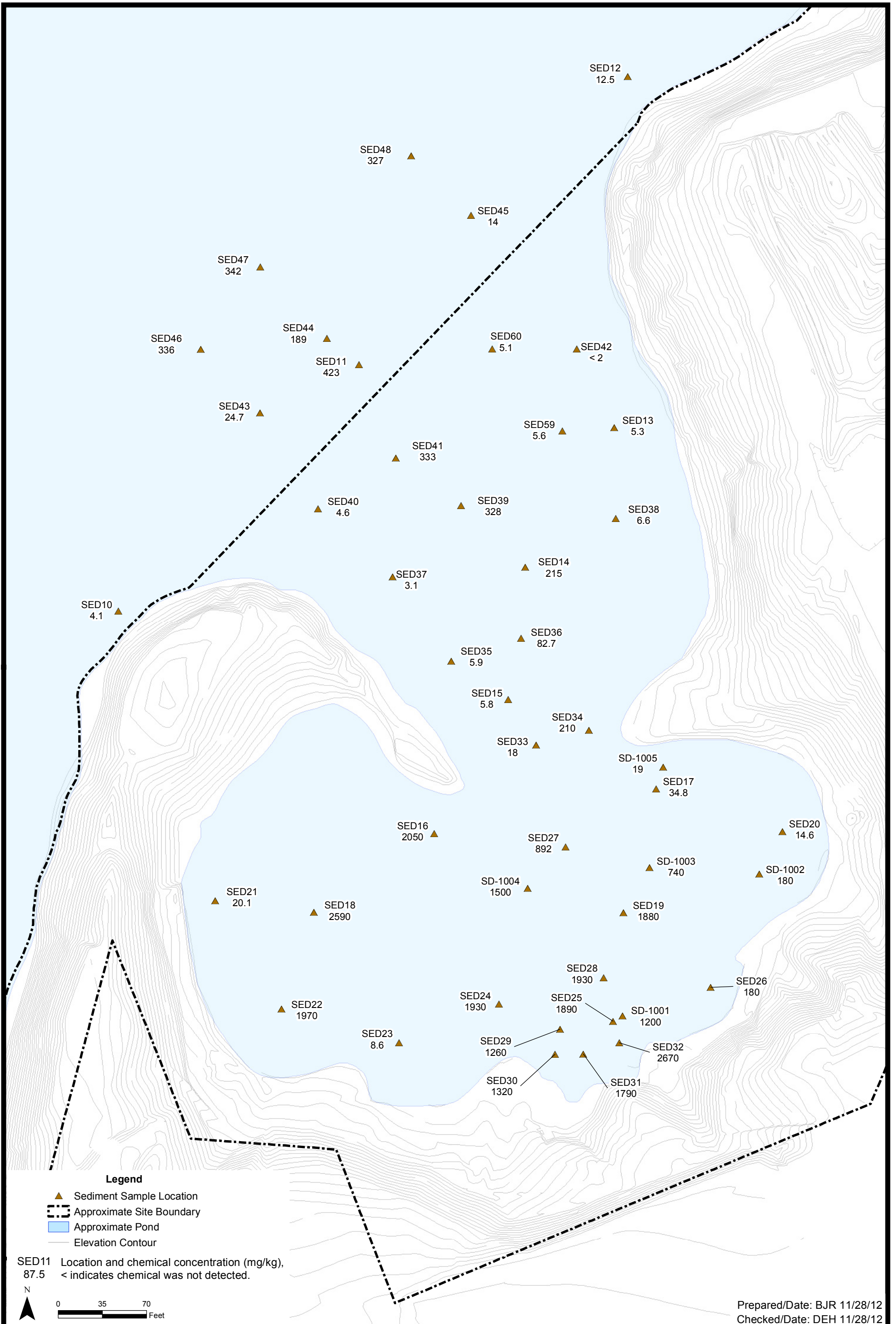


333 Adelaide Avenue Site  
 Providence, Rhode Island



Concentrations of Chromium in Surficial  
 Sediment (0-1 ft or 0-2 ft)  
 Project 3650-11-0222  
 Figure 4.10



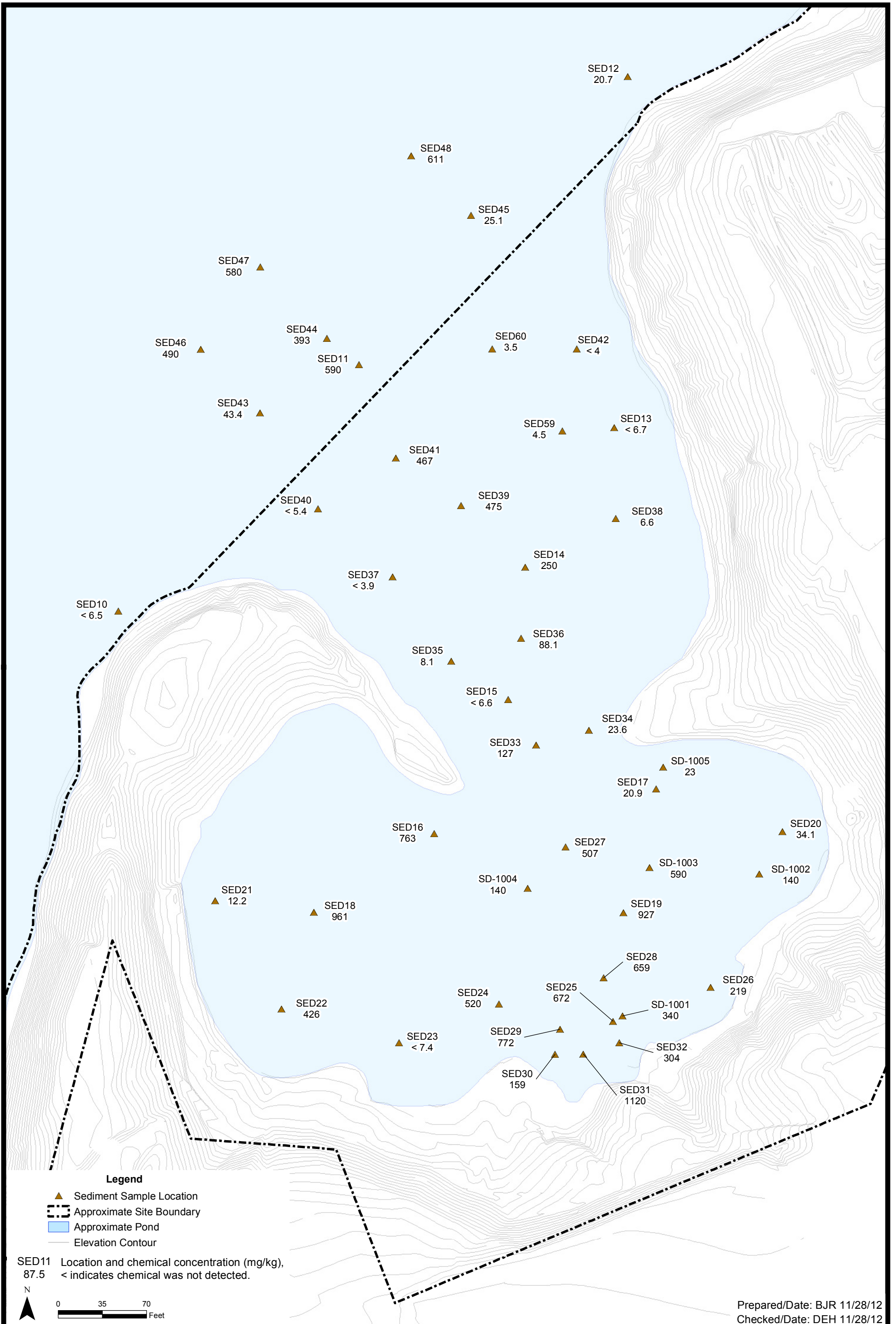


333 Adelaide Avenue Site  
Providence, Rhode Island



Concentrations of Copper in Surficial  
Sediment (0-1 ft or 0-2 ft)  
Project 3650-11-0222

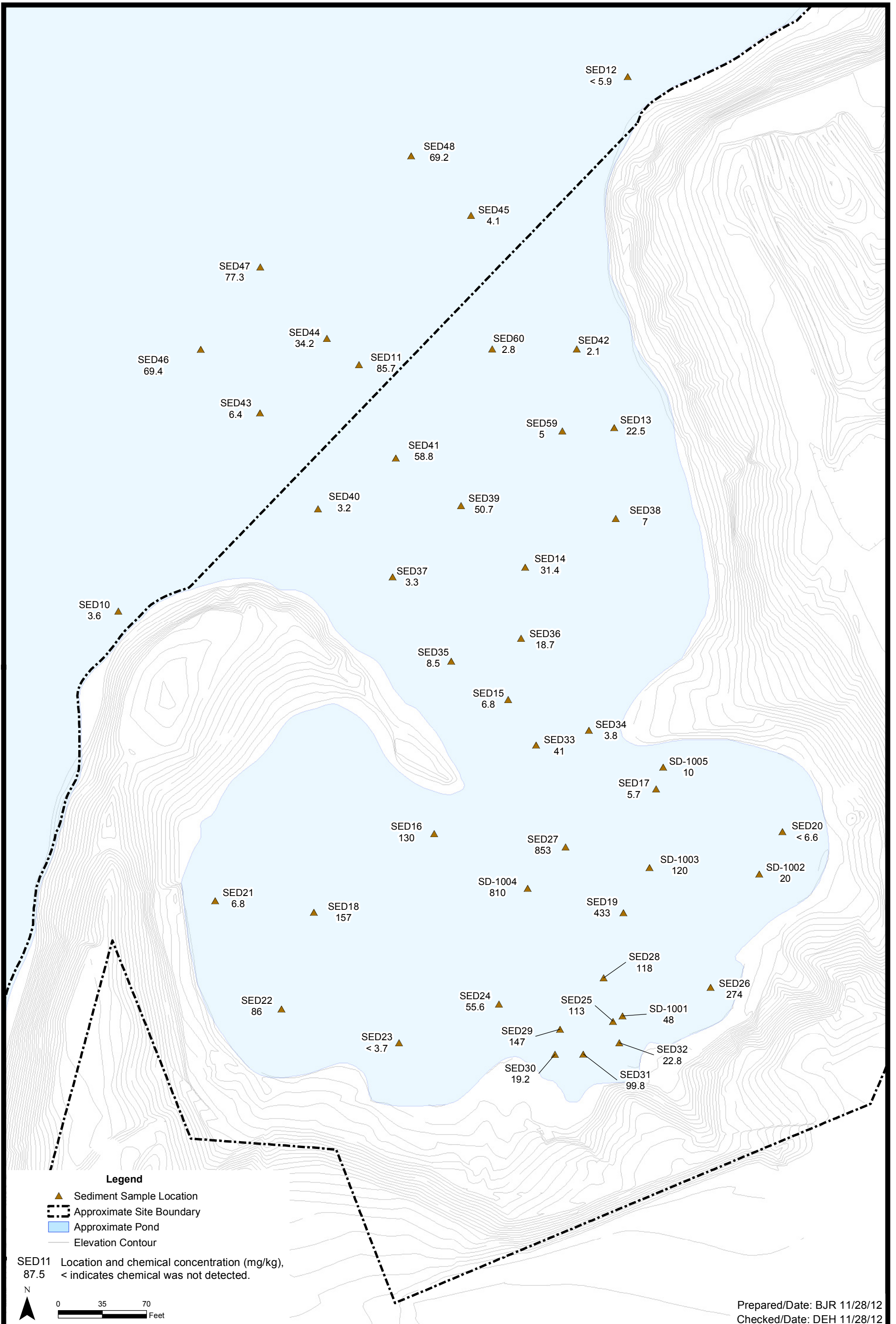
Figure 4.11



333 Adelaide Avenue Site  
Providence, Rhode Island



Concentrations of Lead in Surficial  
Sediment (0-1 ft or 0-2 ft)  
Project 3650-11-0222  
Figure 4.12

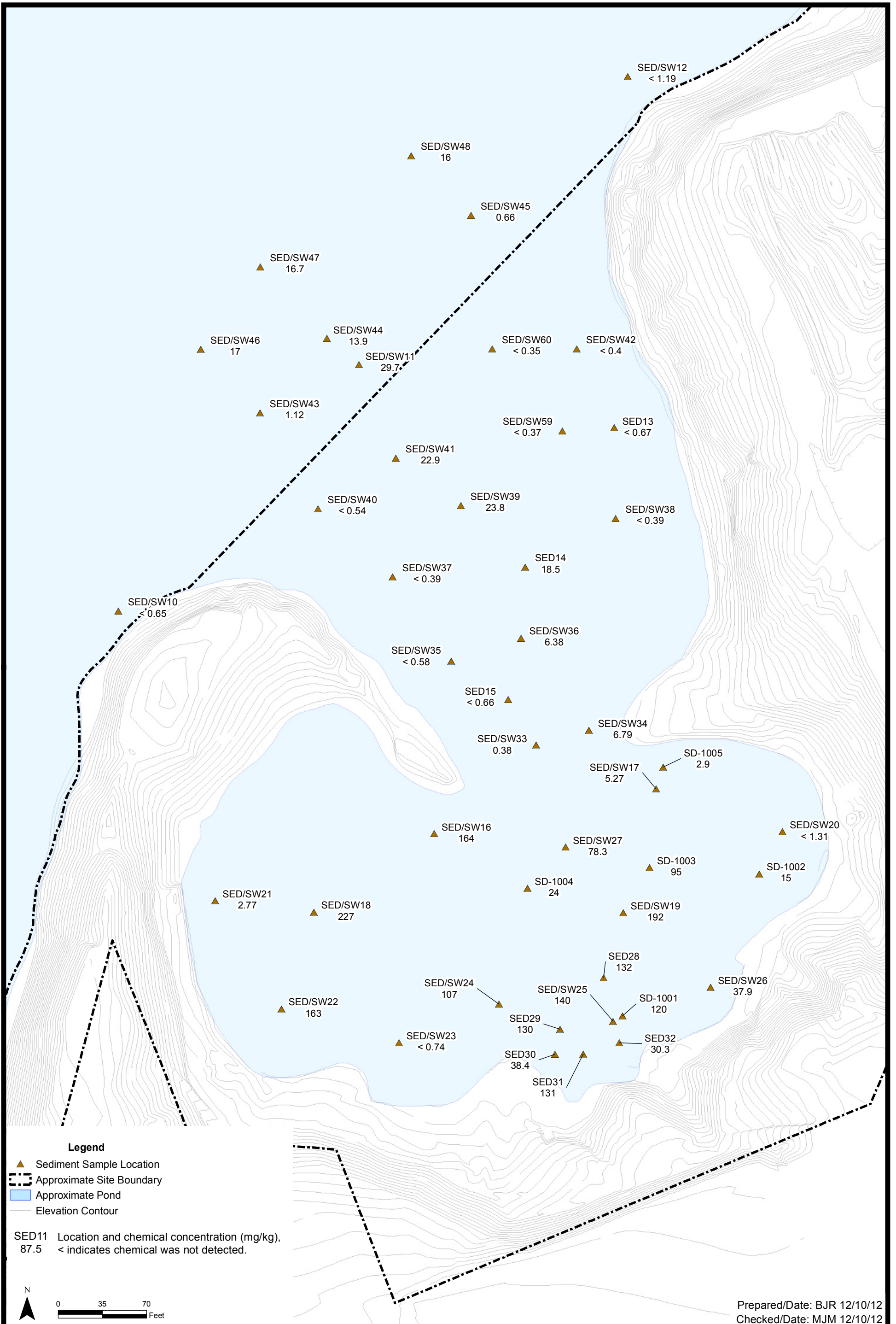


333 Adelaide Avenue Site  
Providence, Rhode Island



Concentrations of Nickel in Surficial  
Sediment (0-1 ft or 0-2 ft)  
Project 3650-11-0222

Figure 4.13



333 Adelaide Avenue Site  
Providence, Rhode Island



Concentrations of Silver in Surficial  
Sediment (0-1 ft or 0-2 ft)  
Project 3650-11-0222 Figure 4.14



333 Adelaide Avenue Site  
Providence, Rhode Island



Concentrations of Total Organic Carbon  
in Surficial Sediment (0-1 ft or 0-2 ft)  
Project 3650-11-0222  
Figure 4.15



333 Adelaide Avenue Site  
Providence, Rhode Island

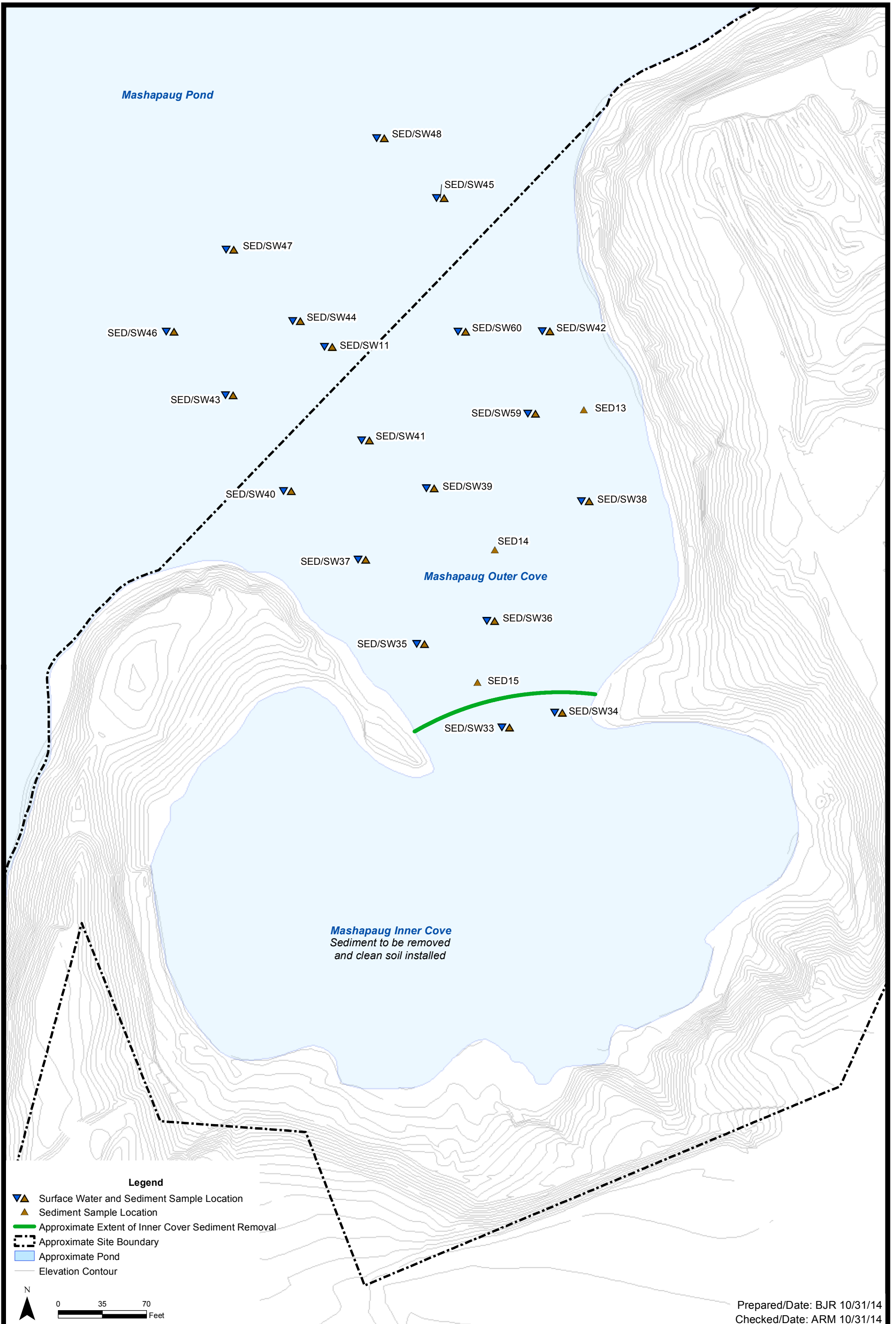


AVS-SEM Results

Project 3650-11-0222

Figure 4.16





333 Adelaide Avenue Site  
Providence, Rhode Island



Figure 5.1  
Sample Locations Used for the SLERA



