



Proactive by Design

GEOTECHNICAL
ENVIRONMENTAL
ECOLOGICAL
WATER
CONSTRUCTION
MANAGEMENT



MEMORANDUM

To: Joseph Martella, RIDEM

From: Dave Rusczyk, GZA

Cc: Kenneth Lento, National Grid

Date: November 19, 2021

Re: Site Response Action Report
Period October 31, 2021 through November 13, 2021
Former Tidewater Facility
Pawtucket, Rhode Island
RIDEM Case No. 95-022 / Site Remediation File No. SR-26-0934

SITE ACTIVITIES PERFORMED

- Charter Contracting Company, LLC (Charter) continued activities related to implementation of the remedial construction work. These activities included:
 - Continued placement of clean imported topsoil for the engineered cap in the southern portion of the Site.
 - Continued installation of the perimeter chain link fencing in the southern portion of the Site.
 - Installation of the plantings within the Coastal Resources Management Council (CRMC) buffer in the central and southern portions of the Site.
 - Installation of the porous pavement maintenance pathway east of the substation.
 - Continued processing of demolition debris generated in the northern portion of the Site to 6-inch minus for reuse as fill beneath the engineered cap.
 - Continued regrading of the ground surface in the northern portion of the Site in preparation for installation of the engineered cap.
 - Completion of vacuum excavation activities in the northern portion of the Site to locate piping connected to the former gas holders and confirmation that the piping was inactive.
 - Initial regrading of the riverbank in the northern portion of the Site in preparation for installation of the revetment.

- Perimeter air monitoring was performed during the period covered by this report with 11 air monitoring stations (4 solar powered units located proximate to the river and 7 electrically powered units). These stations measured and recorded respirable dust and total volatile organic compounds (TVOC) concentrations continuously 24 hours per day/7 days per week with the exception of the following periods:
 - The photoionization detector (PID) within Station 3 was not operating during the period of October 30, 2021 through November 2, 2021. The faulty PID was replaced on November 2, 2021.
 - The electrical power to Station 5 was temporarily deactivated overnight on November 10, 2021 to allow relocation of the station. Electrical power to the station was restored on November 11, 2021.



As indicated in the attached weekly perimeter air monitoring graphs, isolated exceedances of the total volatile organic compound perimeter threshold level (0.5 ppmv) were noted during the period covered by this report as follows:

- Sporadic exceedances of the TVOC perimeter threshold level (0.5 parts per million) were noted during the period covered by this report at the 4 solar powered stations (Stations 1 through 4). The air samples screened by the solar powered stations are not preheated within the unit prior to measuring the TVOC concentrations. As a result, the TVOC concentrations measured by the solar powered stations are affected and biased high during conditions with elevated humidity/dewpoint levels or during rapid changes in humidity levels. As shown on the TVOC plots for the solar power air monitoring stations, the humidity levels as measured by the on-Site weather station ranged from approximately 20% to 90% and the sporadic elevated TVOC levels observed at the four solar powered stations during this period were attributed to these elevated humidity levels and rapid changes in humidity levels rather than Site work activities
- On November 9, 2021, an isolated TVOC exceedance was observed at Station 11 during the performance of demolition activities in the northwestern portion of the Site. The isolated elevated TVOC levels however dissipated prior to the implementation of engineered controls.
- On November 10, 2021, National Grid was repairing a leak in the natural gas piping within Tidewater Street at the intersection with Taft Street. During the performance of this work, an isolated TVOC exceedance was observed at Station 10 proximate to the intersection of Taft and Tidewater Streets. The isolated elevated TVOC levels were attributed to the gas line repair work and the levels dissipated prior to the implementation of engineered controls.
- GZA collected ambient air samples from upwind and downwind locations on November 4, 2021 and November 11, 2021 for laboratory analysis for benzene, toluene, ethylbenzene, xylenes, and naphthalene. The analytical results from these samples indicated there were no exceedances of the project action levels. The analytical results were posted to the project website and the bulletin boards at the ends of Tidewater Street and Bowles Court and are also attached to this report.

ANTICIPATED SITE ACTIVITIES TO BE PERFORMED WITHIN NEXT 2 WEEKS

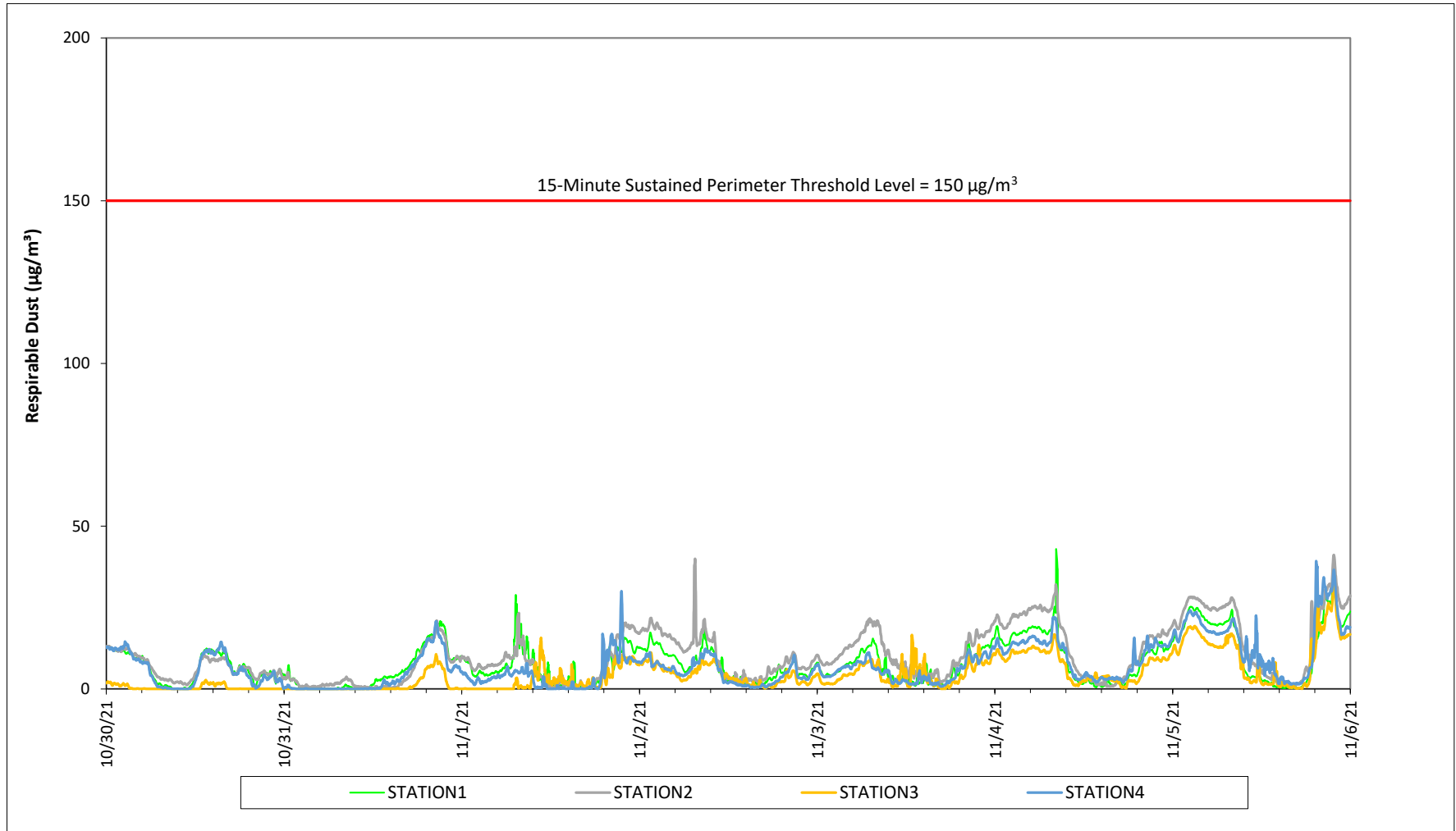
- Completion of the installation of the perimeter chain link fencing in the southern portion of the Site.
- Continued import of clean topsoil to construct the engineered caps in the southern portion of the Site.
- Completion of demolition activities in the northern portion of the Site.
- Continued regrading in the northern portion of the Site to the subgrade elevations for the engineered cap.
- Continued construction of the revetment in the northern portion of the Site.
- Seeding within the CRMC buffer and in the southern portion of the Site.

Please contact Kenneth Lento at 781-907-3655 if you have any questions or comments.

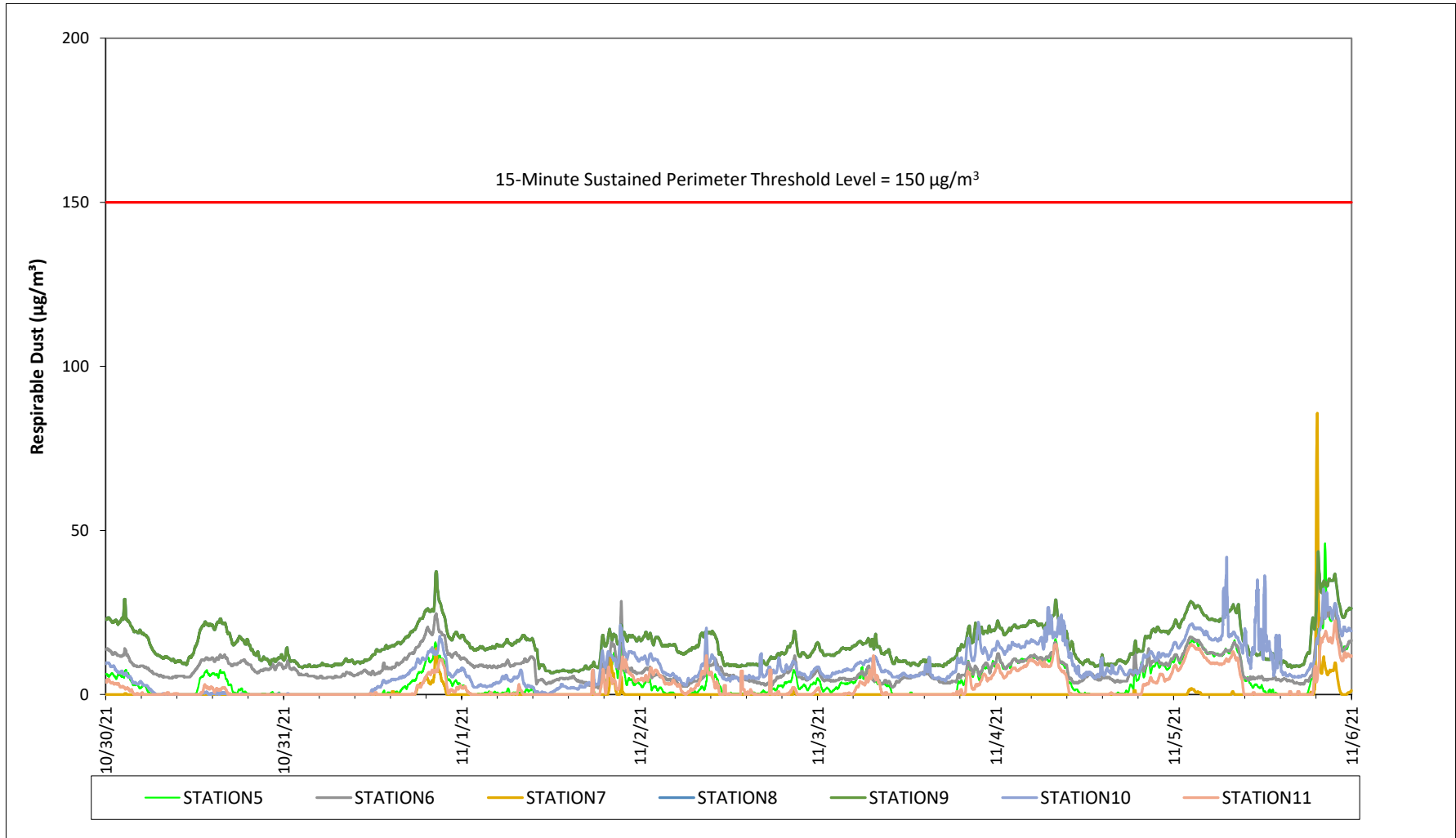
Attachments:

Weekly Perimeter Air Monitoring Results
Air Monitoring Station Locations
Weekly Ambient Air Sampling Results

Prepared by National Grid for the Businesses and Residents Located Near the Former
Tidewater Facility
Air Quality Monitoring - Respirable Dust

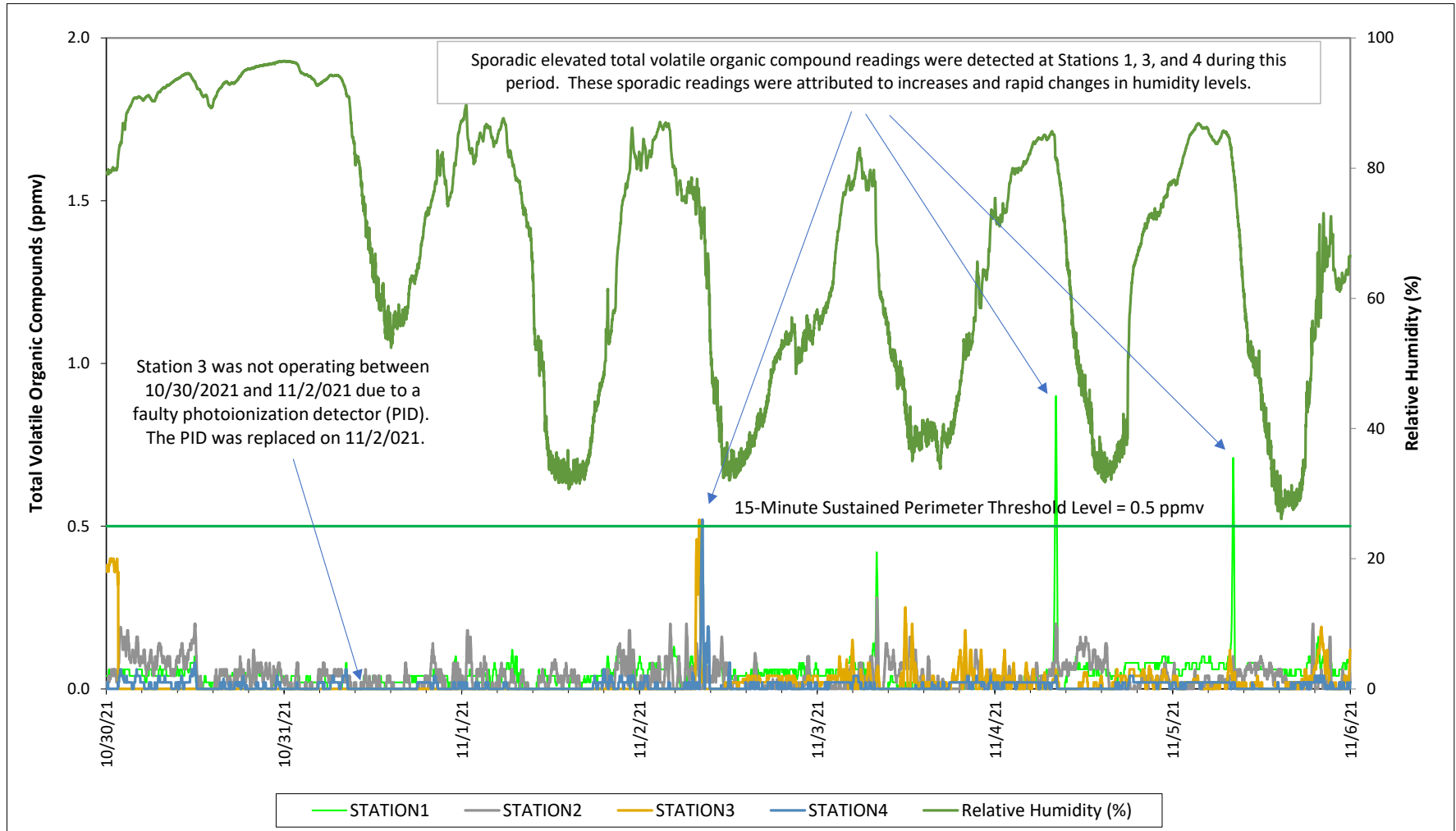


Prepared by National Grid for the Businesses and Residents Located Near the Former
Tidewater Facility
Air Quality Monitoring - Respirable Dust



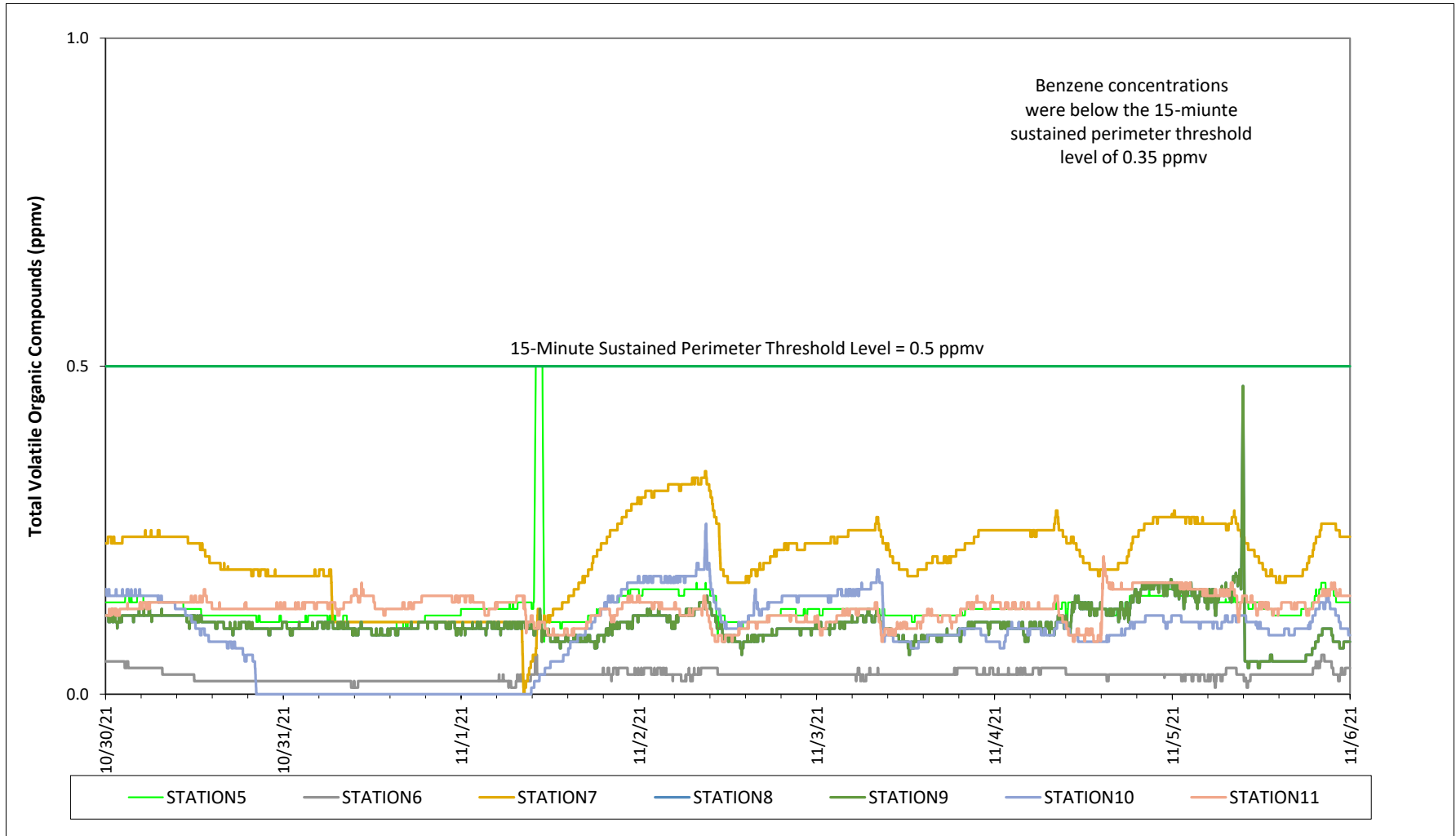
Prepared by National Grid for the Businesses and Residents Located Near the Former Tidewater Facility

Air Quality Monitoring - Total Volatile Organic Compounds

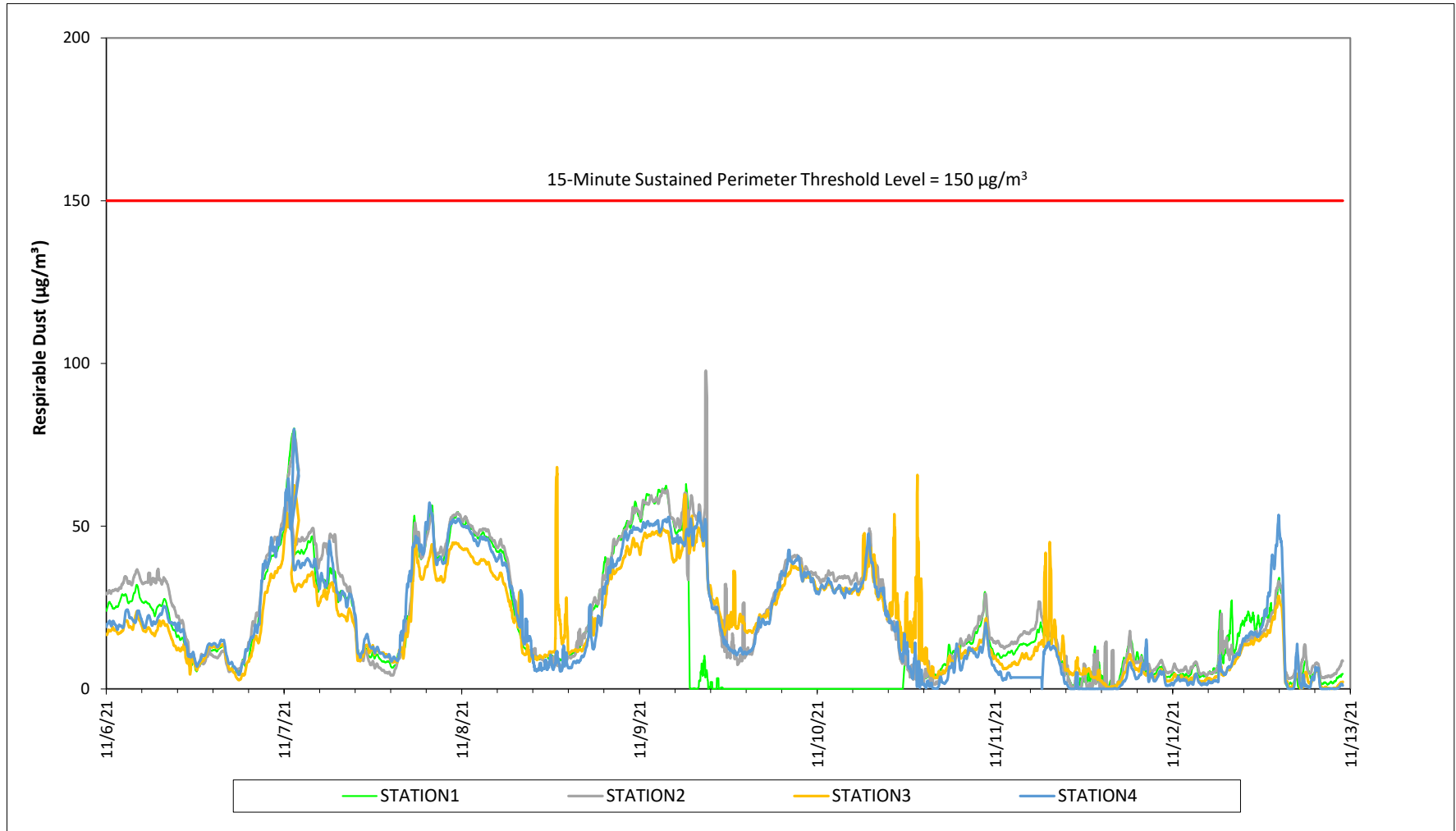


Prepared by National Grid for the Businesses and Residents Located Near the Former
Tidewater Facility

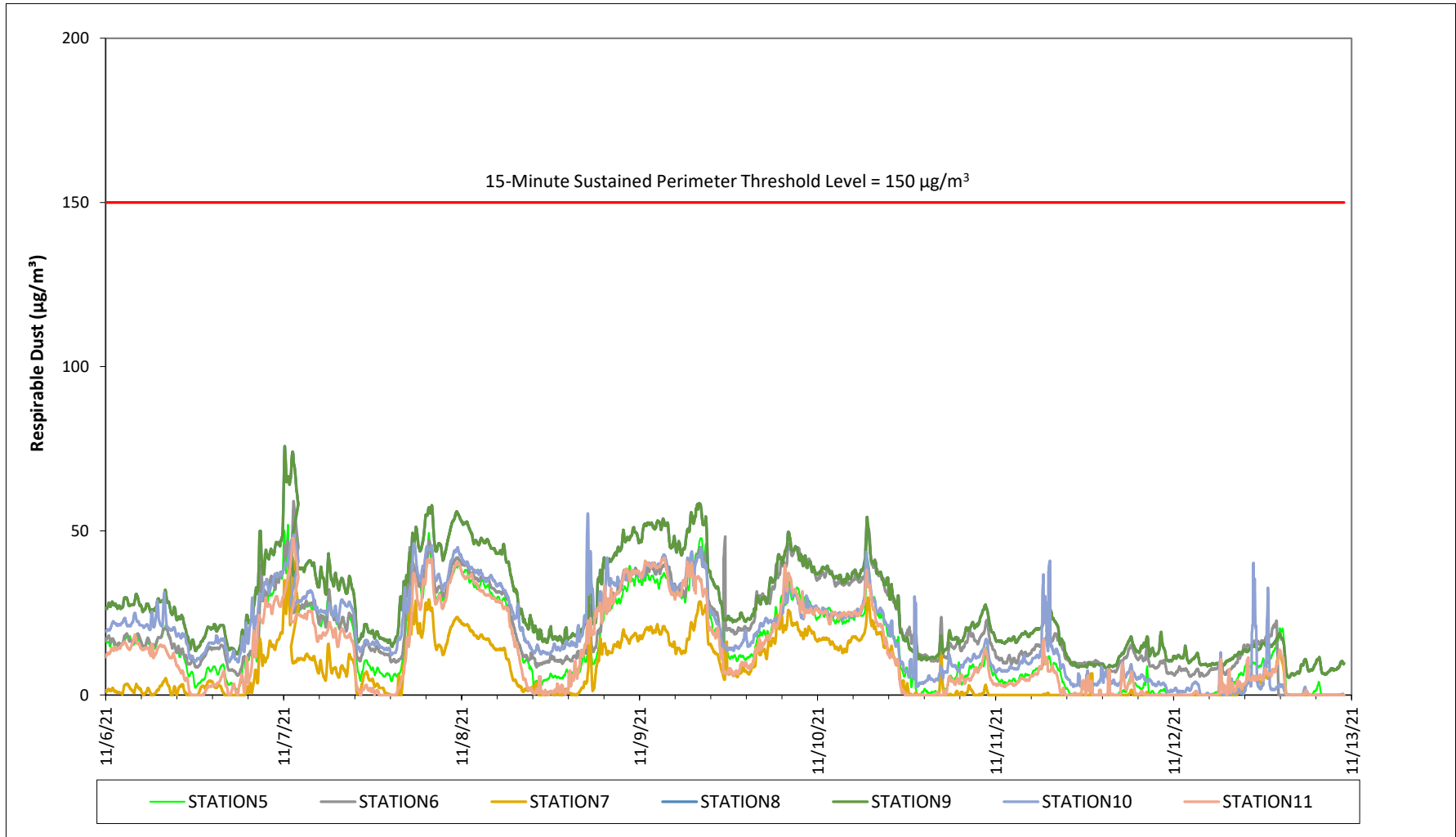
Air Quality Monitoring - Total Volatile Organic Compounds



Prepared by National Grid for the Businesses and Residents Located Near the Former
Tidewater Facility
Air Quality Monitoring - Respirable Dust

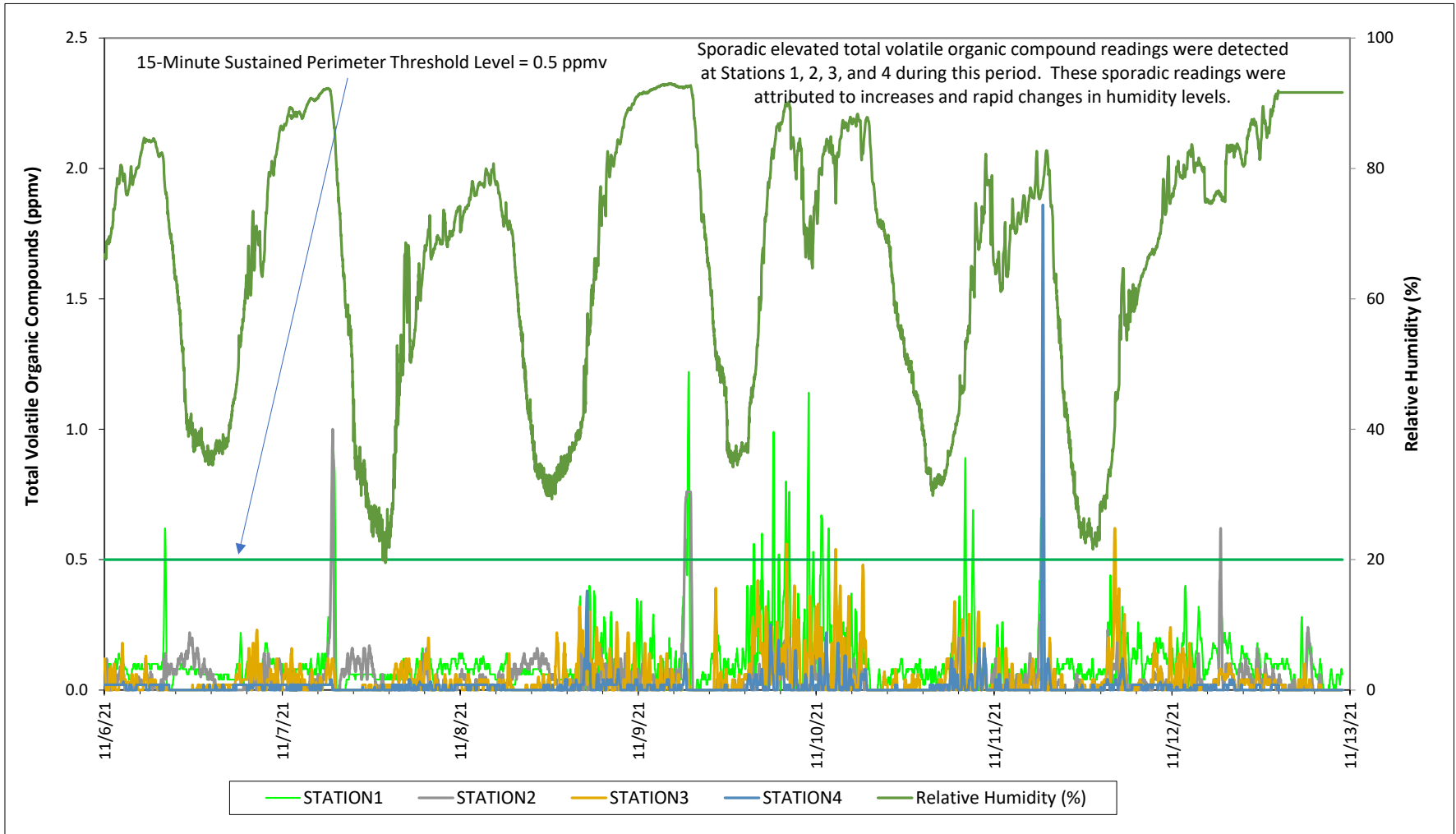


Prepared by National Grid for the Businesses and Residents Located Near the Former
Tidewater Facility
Air Quality Monitoring - Respirable Dust



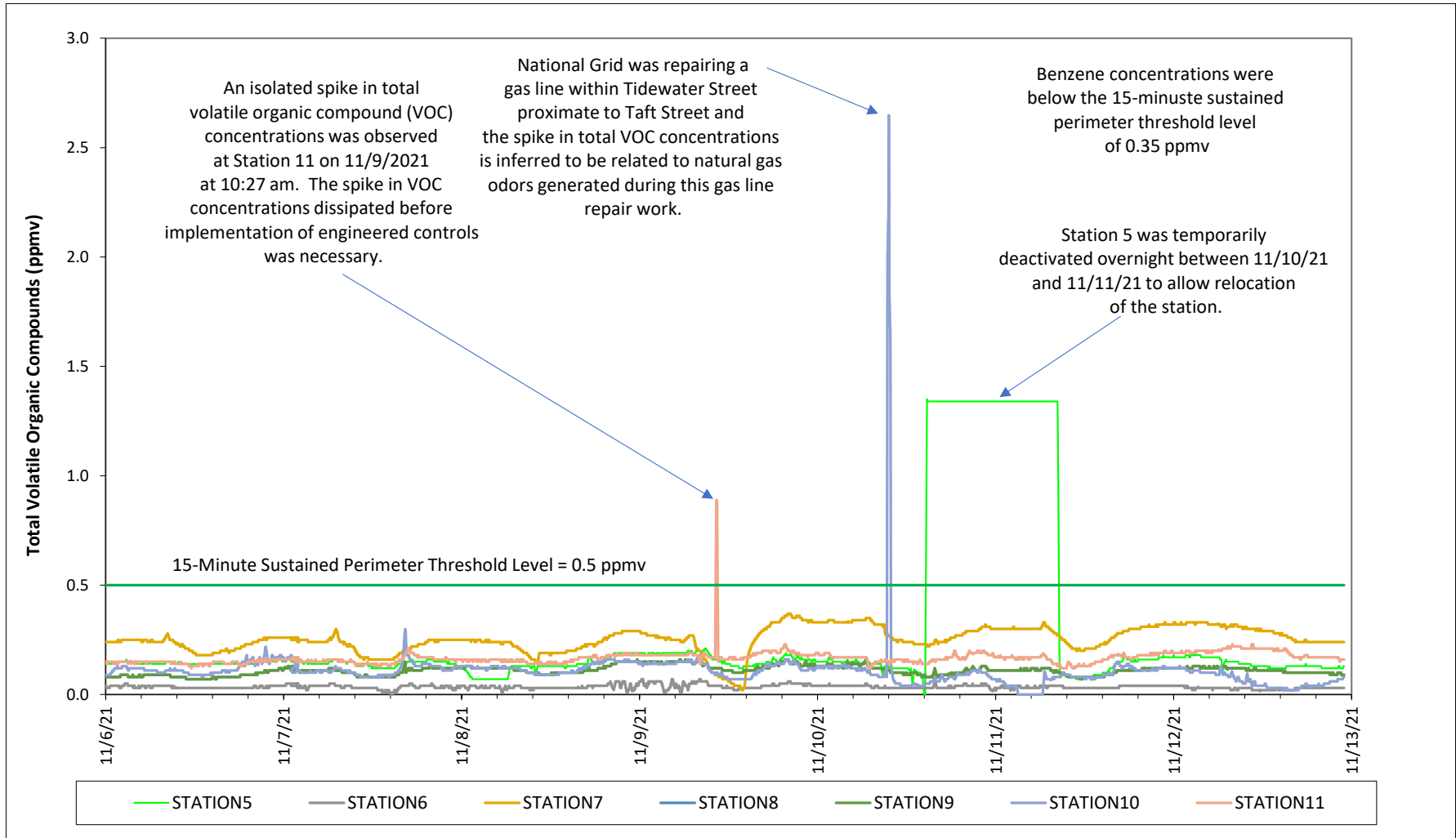
Prepared by National Grid for the Businesses and Residents Located Near the Former
Tidewater Facility

Air Quality Monitoring - Total Volatile Organic Compounds

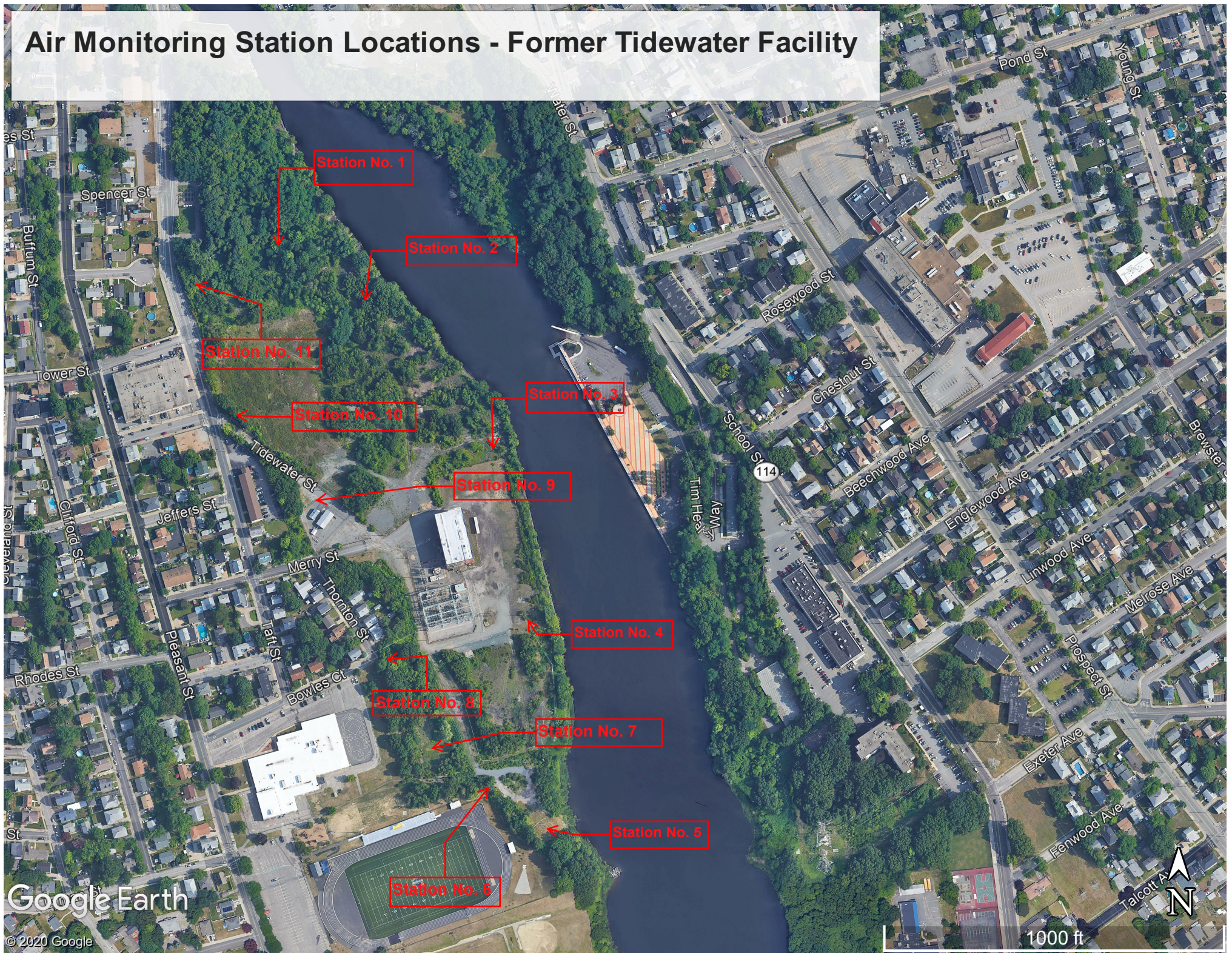


Prepared by National Grid for the Businesses and Residents Located Near the Former Tidewater Facility

Air Quality Monitoring - Total Volatile Organic Compounds



Air Monitoring Station Locations - Former Tidewater Facility



**Prepared by National Grid for the Businesses and Residents Located Near the Former Tidewater Facility
Weekly Ambient Air Sampling Results**

Sample Date	Compounds				
	Benzene	Toluene	Ethylbenzene	Total Xylenes	Naphthalene
	(ppb v/v)				
12-3-20 UP STREAM	0.13	0.22	0.079	0.054	< 0.5
12-3-20 DOWN STREAM	0.13	0.2	0.073	0.05	< 0.5
12-10-20 UP STREAM	0.25	0.23	< 0.2	0.14	< 0.5
12-10-20 DOWN STREAM	0.17	0.2	< 0.2	< 0.7	< 0.5
12-16-20 UP STREAM	0.19	0.2	0.083	0.12	< 0.5
12-16-20 DOWN STREAM	0.13	0.16	0.078	0.094	< 0.5
12-23-20 UP STREAM	0.15	0.16	< 0.2	0.1	< 0.5
12-23-20 DOWN STREAM	0.13	0.11	< 0.2	< 0.7	< 0.5
12-30-20 UP STREAM	0.21	0.22	< 0.2	< 0.7	< 0.5
12-30-20 DOWN STREAM	0.089	< 0.2	< 0.2	< 0.7	< 0.5
1/7/21 UP STREAM	0.29	1.5	0.22	2.1	< 0.5
1/7/21 DOWN STREAM	0.16	0.27	0.086	0.42	< 0.5
1/14/21 UP STREAM	0.43	0.44	< 0.2	0.23	< 0.5
1/14/21 DOWN STREAM	0.4	0.52	0.076	0.3	< 0.5
1-21-21 UPSTREAM	0.15	0.28	0.1	< 0.7	0.24
1-21-21 DOWNSTREAM	0.18	0.23	0.11	0.1	< 0.5
1-28-21 UPSTREAM	0.21	0.19	< 0.2	< 0.7	< 0.5
1-28-21 DOWNSTREAM	0.21	0.17	< 0.2	< 0.7	< 0.5
2-4-21 UPSTREAM	0.2	1.1	0.23	1.4	0.18
2-4-21 DOWNSTREAM	0.23	0.29	0.26	0.29	< 1.1
2-11-21 UPSTREAM	0.19	0.12	< 0.2	< 0.7	< 0.5
2-11-21 DOWNSTREAM	0.17	< 0.2	< 0.2	< 0.7	< 0.5
2-18-21 UPSTREAM	0.46	2.8	0.11	0.25	< 0.5
2-18-21 DOWNSTREAM	0.31	0.42	0.13	0.45	< 0.5
2-25-21 UPSTREAM	< 0.2	0.16	< 0.2	0.16	< 0.5
2-25-21 DOWNSTREAM	0.13	< 0.2	0.081	0.3	< 0.5
3-4-21 UPSTREAM	0.2	0.21	< 0.2	0.18	0.27
3-4-21 DOWNSTREAM	0.15	0.12	< 0.2	0.16	< 0.5
3-11-21 UPSTREAM	0.18	0.17	< 0.2	0.23	0.3
3-11-21 DOWNSTREAM	0.18	0.22	0.23	1.0	< 0.5
3-18-21 DOWNSTREAM	0.44	1.6	0.19	0.67	< 0.5
3-25-21 UPSTREAM	0.17	0.32	0.85	4.1	0.53
3-25-21 DOWNSTREAM	0.33	0.67	0.16	0.57	0.27
4-1-21 UPSTREAM	0.22	0.17	< 0.2	< 0.7	< 0.5
4-1-21 DOWNSTREAM	0.12	0.11	< 0.2	< 0.7	< 0.5
4-8-21 UPSTREAM	0.096	0.12	1.5	8.0	< 0.5
4-8-21 DOWNSTREAM	0.086	0.14	0.086	0.38	0.19
4-15-21 UPSTREAM	0.85	0.57	0.1	0.44	< 0.5
4-15-21 DOWNSTREAM	0.11	0.11	0.26	1.20	< 0.5
4-22-21 UPSTREAM	0.11	< 0.2	< 0.2	< 0.7	< 0.5
4-22-21 DOWNSTREAM	0.11	0.16	< 0.2	< 0.7	< 0.5
4-29-21 UPSTREAM	0.14	0.34	0.11	0.32	0.26
4-29-21 DOWNSTREAM	0.19	0.39	0.11	0.37	0.27
5-6-21 UPSTREAM	0.086	0.15	< 0.2	< 0.7	0.38
5-6-21 DOWNSTREAM	1.0	8.4	0.21	0.69	< 0.5
5-13-21 UPSTREAM	< 0.2	0.36	< 0.2	0.19	0.34
5-13-21 DOWNSTREAM	0.12	< 0.2	< 0.2	< 0.7	< 0.5
5-20-2021 UPSTREAM	0.38	2.5	< 0.2	< 0.7	< 0.5
5-20-2021 DOWNSTREAM	0.16	0.56	0.3	1.40	< 0.5
Project Action Levels	6.2	80	230	23	20

**Prepared by National Grid for the Businesses and Residents Located Near the Former Tidewater Facility
Weekly Ambient Air Sampling Results**

Sample Date	Compounds				
	Benzene	Toluene	Ethylbenzene	Total Xylenes	Naphthalene
(ppb v/v)					
5-27-21 UPSTREAM	0.095	0.12	0.45	2.10	0.4
5-27-21 DOWNSTREAM	0.075	0.094	< 0.2	< 0.7	< 0.5
6-3-21 UPSTREAM	< 0.2	0.16	< 0.2	< 0.7	< 0.5
6-3-21 DOWNSTREAM	0.075	0.11	< 0.2	< 0.7	< 0.5
6-10-21 UPSTREAM	< 0.2	< 0.2	< 0.2	< 0.7	< 0.5
6-10-21 DOWNSTREAM	< 0.2	< 0.2	< 0.2	< 0.7	< 0.5
6-17-21 UPSTREAM	0.64	0.6	0.48	0.66	0.64
6-17-21 DOWNSTREAM	0.12	0.12	0.16	< 0.7	< 0.5
6-24-21 UPSTREAM	< 0.2	0.17	< 0.2	< 0.7	< 0.5
6-24-21 DOWNSTREAM	< 0.2	0.45	0.19	0.82	< 0.5
7-1-21 UPSTREAM	1.10	7.9	0.12	0.39	< 0.7
7-1-21 DOWNSTREAM	0.13	0.74	< 0.2	0.29	< 0.7
7-8-21 UPSTREAM	< 0.2	0.29	< 0.2	0.38	0.29
7-8-21 DOWNSTREAM	< 0.2	< 0.2	< 0.2	< 0.7	< 0.5
7-15-21 UPSTREAM	0.10	0.28	< 0.2	0.32	< 0.5
7-15-21 DOWNSTREAM	0.14	0.37	0.31	1.5	< 0.5
7-22-21 UPSTREAM	0.27	0.3	< 0.2	< 0.7	< 0.5
7-22-21 DOWNSTREAM	0.30	0.33	< 0.2	< 0.7	< 0.5
7-29-21 UPSTREAM	0.22	0.26	0.1	0.56	0.19
7-29-21 DOWNSTREAM	0.099	0.23	< 0.2	< 0.7	< 0.5
8-5-21 UPSTREAM	0.70	1.2	< 0.2	0.17	< 0.5
8-5-21 DOWNSTREAM	0.310	0.53	< 0.25	< 0.88	< 0.63
8-12-21 UPSTREAM	0.19	0.18	< 0.2	< 0.7	0.2
8-12-21 DOWNSTREAM	1.2	0.7	< 0.2	0.31	< 0.5
8-19-21 UPSTREAM	0.66	6.2	1.2	3.50	< 1.6
8-19-21 DOWNSTREAM	0.21	0.24	< 0.2	0.11	< 0.5
8-26-21 UPSTREAM	0.34	0.73	0.22	0.90	0.18
8-26-21 DOWNSTREAM	0.34	0.63	0.24	0.87	0.31
9-1-21 UPSTREAM	0.17	0.34	< 0.2	< 0.7	< 0.5
9-1-21 DOWNSTREAM	0.18	0.35	< 0.2	0.19	< 0.5
9-9-21 UPSTREAM	0.12	0.22	< 0.2	0.28	< 0.5
9-9-21 DOWNSTREAM	< 0.2	0.89	< 0.2	< 0.7	0.42
9-16-21 UPSTREAM	0.14	0.26	0.11	0.31	0.3
9-16-21 DOWNSTREAM	0.11	0.26	< 0.2	0.28	< 0.5
9-23-21 UPSTREAM	< 0.2	0.12	< 0.2	< 0.7	< 0.5
9-23-21 DOWNSTREAM	< 0.2	0.12	< 0.2	< 0.7	< 0.5
9-30-21 UPSTREAM	0.17	0.37	0.23	0.66	< 0.51
9-30-21 DOWNSTREAM	0.086	0.21	< 0.2	< 0.7	< 0.5
10-7-21 UPSTREAM	0.24	0.55	0.14	0.41	< 0.5
10-7-21 DOWNSTREAM	< 0.2	0.42	0.11	0.16	< 0.5
10-14-21 UPSTREAM	0.19	0.40	< 0.2	< 0.7	< 0.5
10-14-21 DOWNSTREAM	0.34	0.89	0.23	0.75	< 0.5
10-22-21 UPWIND	0.14	0.32	< 0.2	< 0.7	< 0.5
10-22-21 DOWNWIND	0.13	0.39	< 0.2	0.43	< 0.5
10-28-21 UPWIND	0.41	0.14	0.46	0.10	< 0.5
10-28-21 DOWNWIND	0.18	0.43	< 0.2	< 0.70	< 0.5
11-4-2021 UPWIND	0.20	0.31	< 0.2	< 0.70	< 0.5
11-4-2021 DOWNWIND	0.14	0.23	< 0.2	< 0.7	< 0.5
11-11-21 UPWIND	0.23	0.45	0.17	0.51	0.35
11-11-21 DOWNWIND	0.31	0.69	0.18	0.56	< 0.5
Project Action Levels	6.2	80	230	23	20

Notes:

1. The Project Action Levels are consistent with the Air Quality Monitoring Plan developed for the Site.
2. Air samples are collected in stainless steel summa canisters over an approximately 8-hour period.
3. Air samples are analyzed by EuroFins TestAmerica of Burlington, VT.
4. Results and action levels are listed in parts per billion volume/volume (ppb v/v).
5. An upstream ambient air sample was not collected on March 18, 2021 due to a problem with the sampling equipment.