



Proactive by Design

GEOTECHNICAL  
ENVIRONMENTAL  
ECOLOGICAL  
WATER  
CONSTRUCTION  
MANAGEMENT



## MEMORANDUM

To: Joseph Martella, RIDEM

From: Dave Rusczyk, GZA

Cc: Kenneth Lento, National Grid

Date: February 27, 2022

Re: Site Response Action Report  
Period January 23, 2022 through February 5, 2022  
Former Tidewater Facility  
Pawtucket, Rhode Island  
RIDEM Case No. 95-022 / Site Remediation File No. SR-26-0934

---

### SITE ACTIVITIES PERFORMED

- Charter Contracting Company, LLC (Charter) continued activities related to implementation of the remedial construction work. These activities included:
  - Continued processing of excavated materials generated in the northern portion of the Site to 6-inch minus for reuse as fill beneath the engineered cap.
  - Continued regrading of the ground surface in the northern portion of the Site in preparation for installation of the engineered cap.
  - Continued regrading of the riverbank in the northern portion of the Site below the Mean High Water elevation in approximately 25-foot-wide sections.
  - Continued installation of the revetment cap in the northern portion of the Site.
  - Continued installation of the containment wall in the northern portion of the Site.
  
- Perimeter air monitoring was performed during the period covered by this report with 11 air monitoring stations (4 solar powered units located proximate to the river and 7 electrically powered units). These stations measured and recorded respirable dust and total volatile organic compounds (TVOC) concentrations continuously 24 hours per day/7 days per week with the exception of the following periods:
  - Delivery of the calibration gases for the dust and TVOC monitoring equipment within the four solar powered monitoring stations was delayed during this period due to supply chain issues and the solar powered stations ran out of calibration gas during the week of January 22, 2022. Calibration gas for the dust and TVOC monitoring equipment was received on January 27, 2022.
  - The batteries within Stations 1 and 4 failed late in the day on Friday, January 28, 2022 and were replaced on Monday, January 31, 2022.
  - The dust monitor in Station 3 was not operating properly between the afternoon of February 1 and the morning of February 2, 2022. The dust monitor was repaired on February 2, 2022 after discussions with the equipment supplier.

As indicated in the attached weekly perimeter air monitoring graphs, isolated exceedances of the total volatile organic compound (0.5 ppmv) perimeter threshold level were noted during the period covered by this report as follows:



- Sporadic exceedances of the TVOC perimeter threshold level (0.5 parts per million) were noted during the period covered by this report at solar powered air monitoring Stations 1, 2, and 3. The air samples screened by the solar powered stations are not preheated within the unit prior to measuring the TVOC concentrations. As a result, the TVOC concentrations measured by the solar powered stations are affected and biased high during conditions with elevated humidity/dewpoint levels or during rapid changes in humidity levels. As shown on the TVOC plots for the solar power air monitoring stations, the humidity levels as measured by the on-Site weather station ranged from approximately 30% to 95% and the sporadic elevated TVOC levels observed at these three solar powered stations during this period were attributed to these elevated humidity levels and rapid changes in humidity levels rather than Site work activities.
- On February 3, 2022, an isolated TVOC exceedance was observed at Station 1. The exceedance was attributed to the exhaust from construction equipment that was temporarily parked and idling proximate to the station rather than the work activities. The levels dropped after the construction equipment was moved.
- GZA collected ambient air samples from upwind and downwind locations on January 27, 2022 and February 3, 2022 for laboratory analysis for benzene, toluene, ethylbenzene, xylenes, and naphthalene. The analytical results from these samples indicated there were no exceedances of the project action levels. The analytical results were posted to the project website and the bulletin boards at the ends of Tidewater Street and Bowles Court and are also attached to this report.

#### ANTICIPATED SITE ACTIVITIES TO BE PERFORMED WITHIN NEXT 2 WEEKS

- Continued processing of on-Site materials to 6-inch minus for reuse as fill beneath the engineered cap in the northern portion of the Site.
- Continued regrading in the northern portion of the Site to the subgrade elevations for the engineered cap.
- Completion of the construction of the revetment cap in the northern portion of the Site below the Mean High Water elevation.
- Continued construction of the revetment cap in the northern portion of the Site above the Mean High Water elevation.
- Completion of the installation of the steel sheetpile containment wall.

Please contact Kenneth Lento at 781-907-3655 if you have any questions or comments.

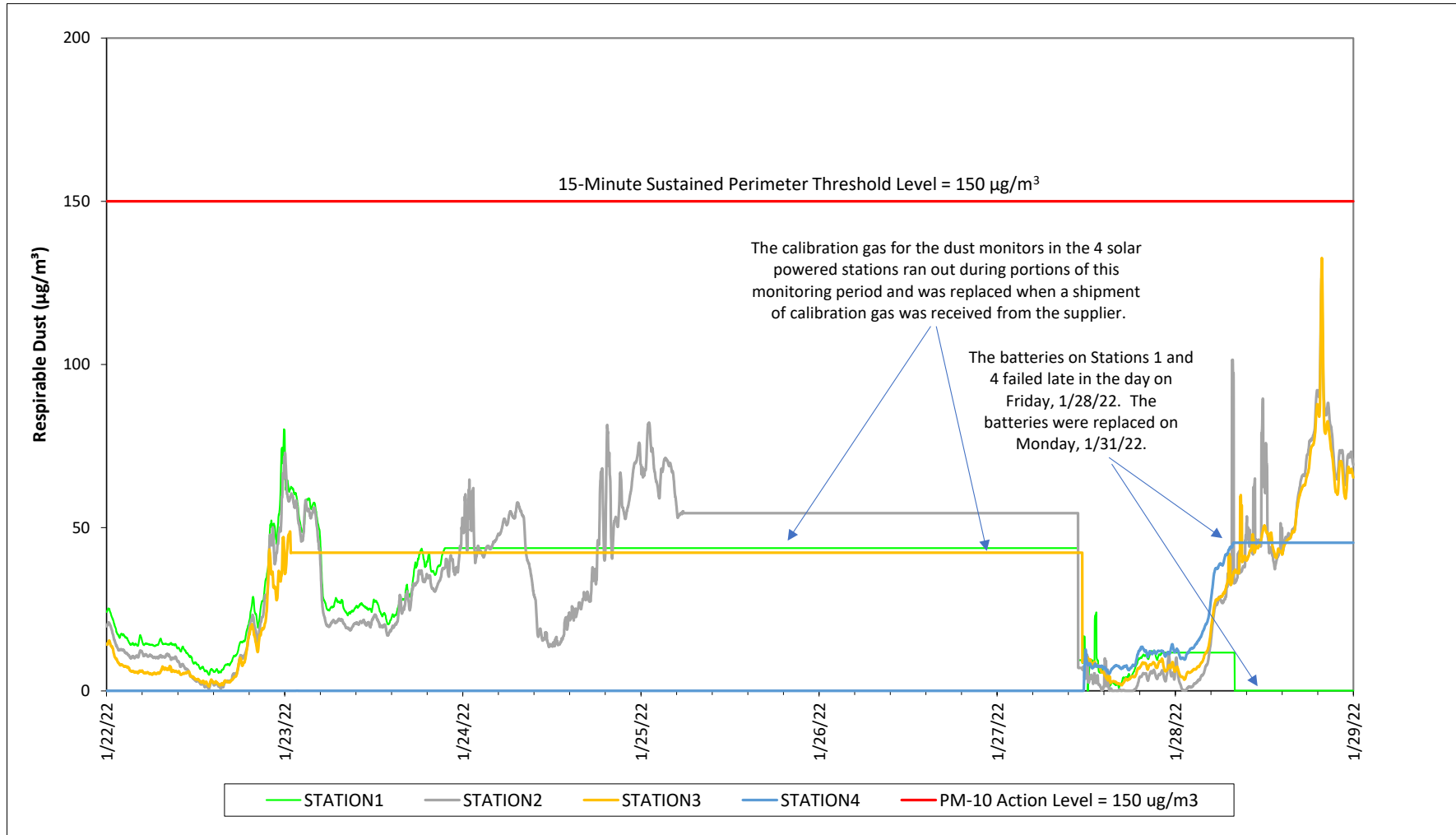
#### **Attachments:**

Weekly Perimeter Air Monitoring Results

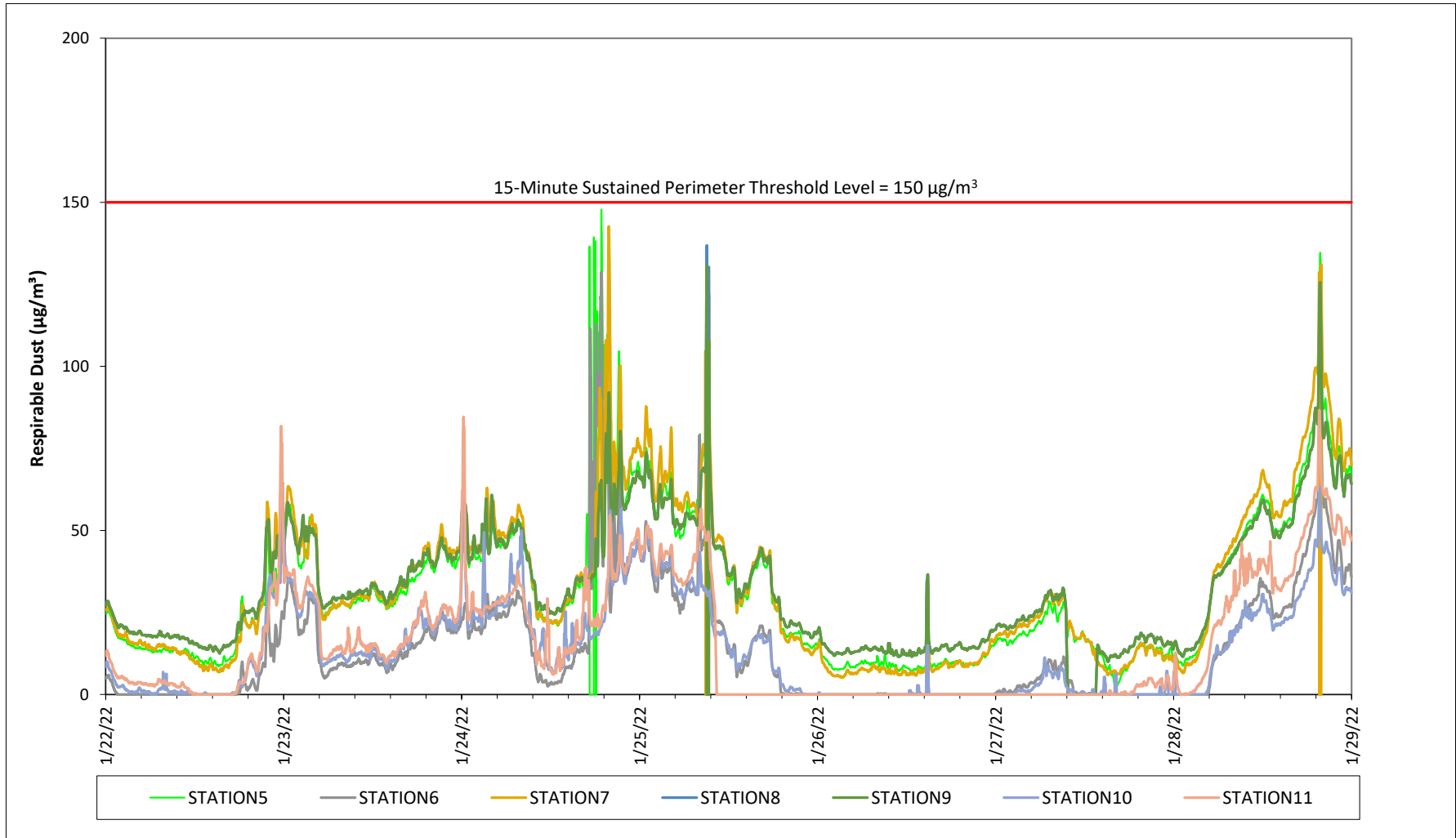
Air Monitoring Station Locations

Weekly Ambient Air Sampling Results

Prepared by National Grid for the Businesses and Residents Located Near the Former  
Tidewater Facility  
Air Quality Monitoring - Respirable Dust



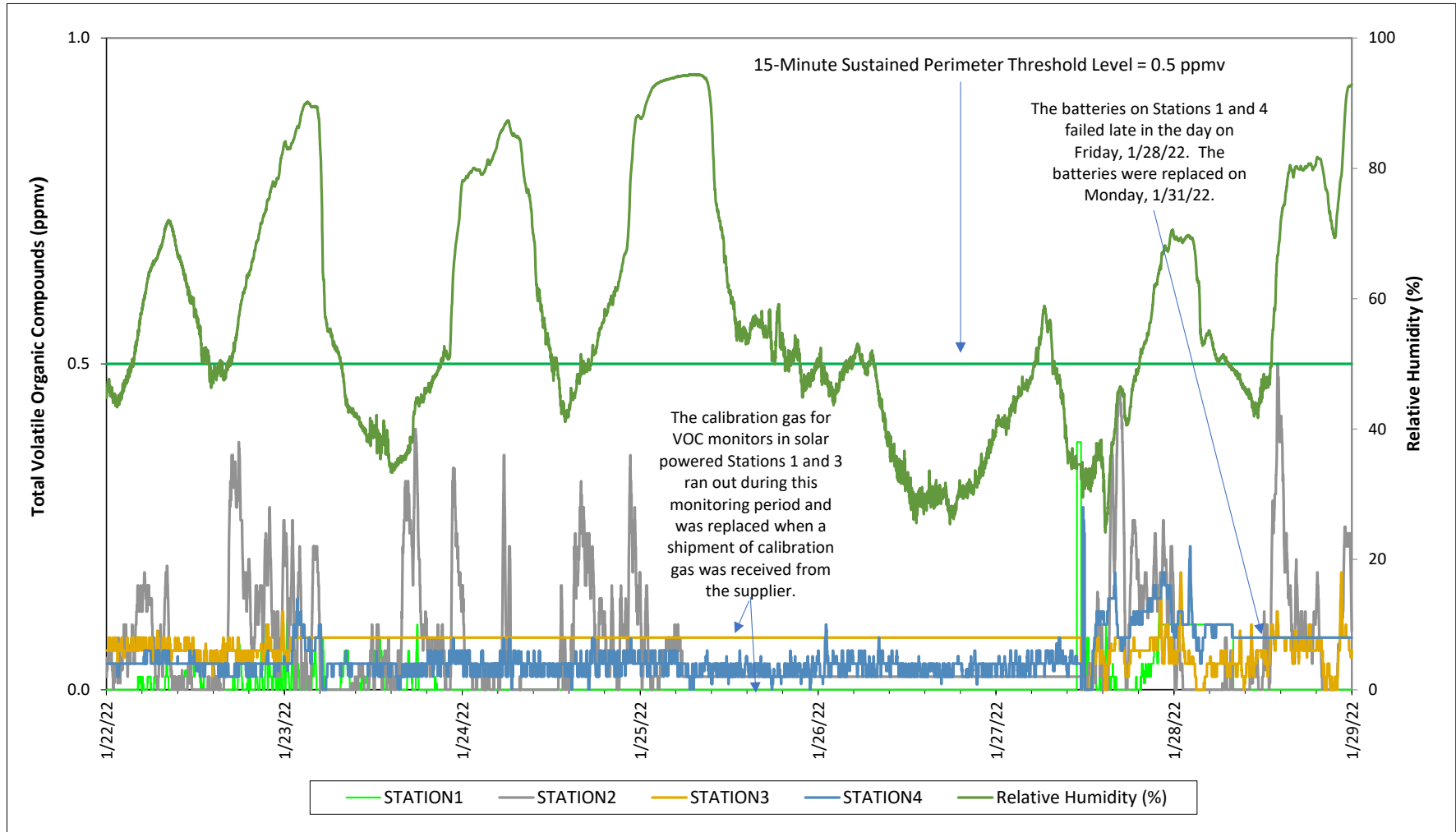
Prepared by National Grid for the Businesses and Residents Located Near the Former  
Tidewater Facility  
Air Quality Monitoring - Respirable Dust





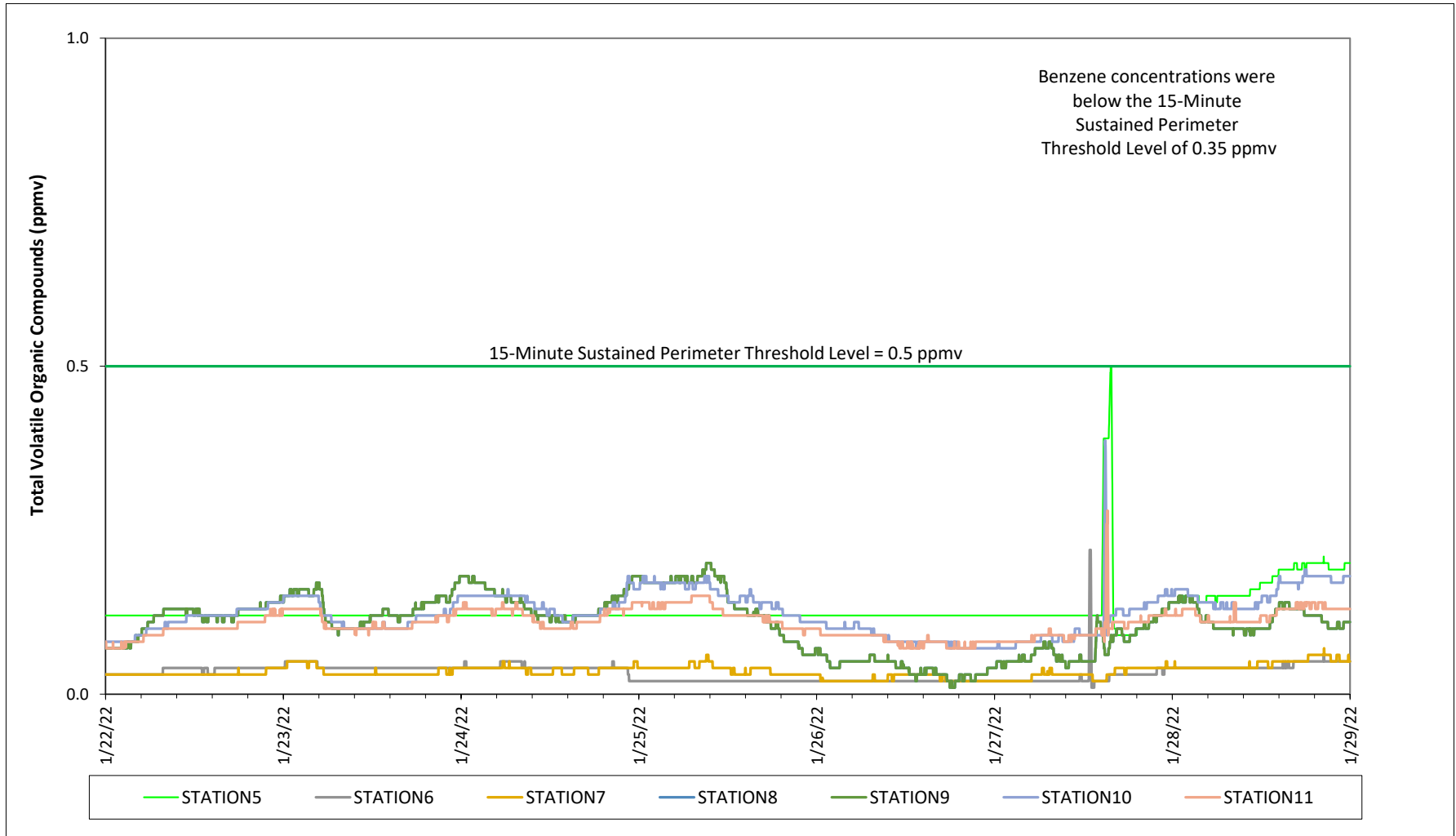
Prepared by National Grid for the Businesses and Residents Located Near the Former  
Tidewater Facility

Air Quality Monitoring - Total Volatile Organic Compounds

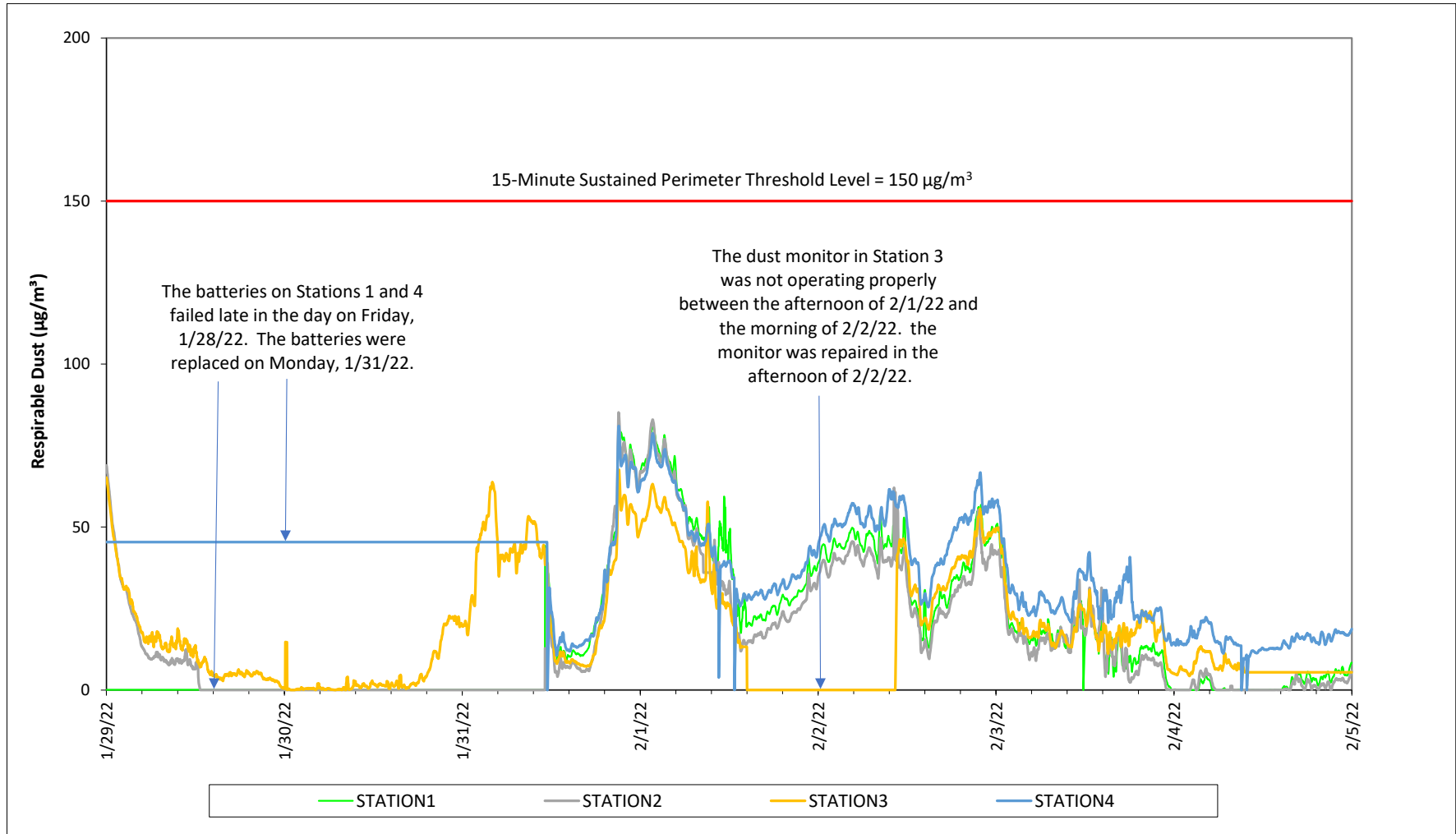


Prepared by National Grid for the Businesses and Residents Located Near the Former  
Tidewater Facility

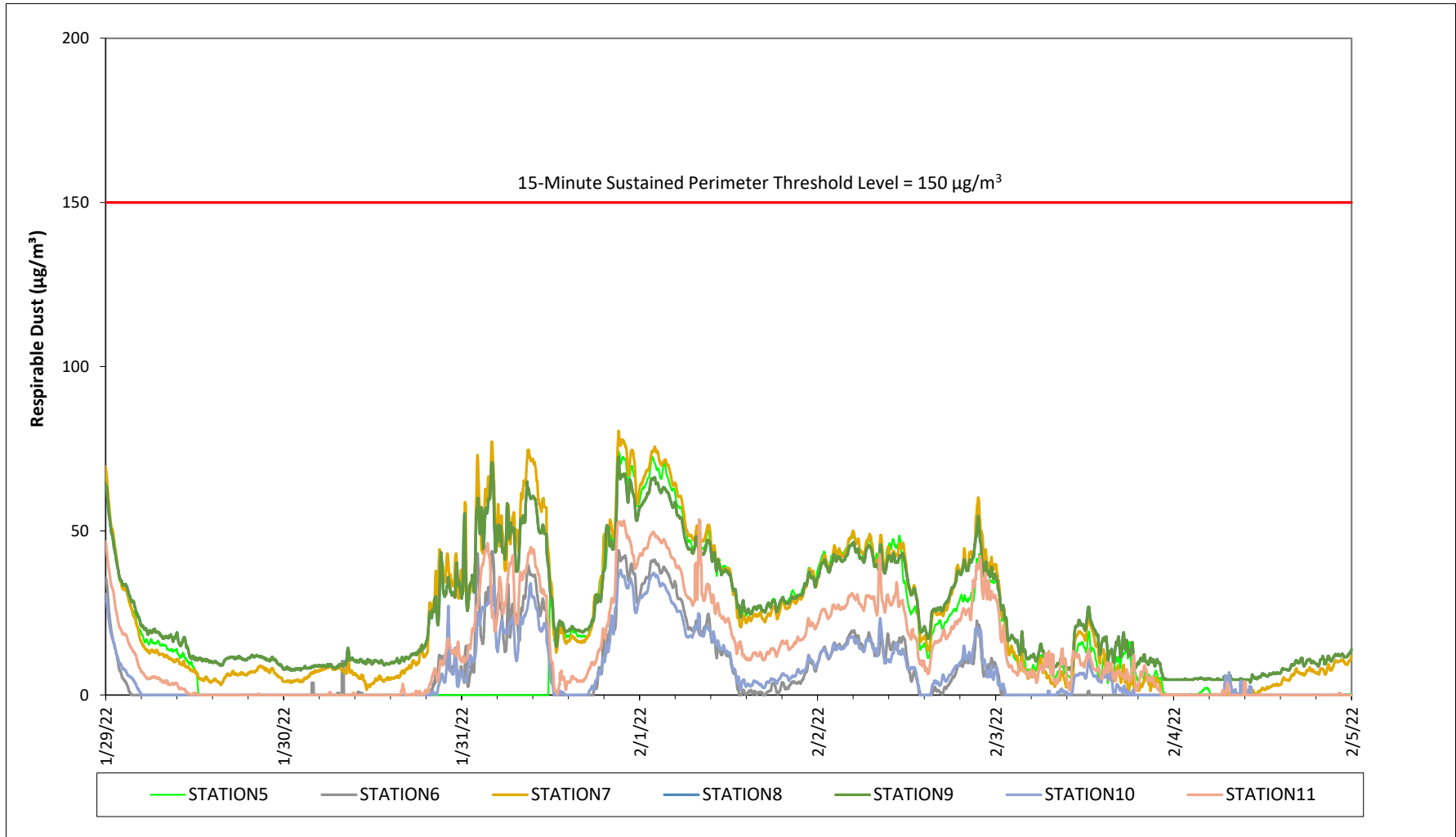
Air Quality Monitoring - Total Volatile Organic Compounds



Prepared by National Grid for the Businesses and Residents Located Near the Former  
Tidewater Facility  
Air Quality Monitoring - Respirable Dust

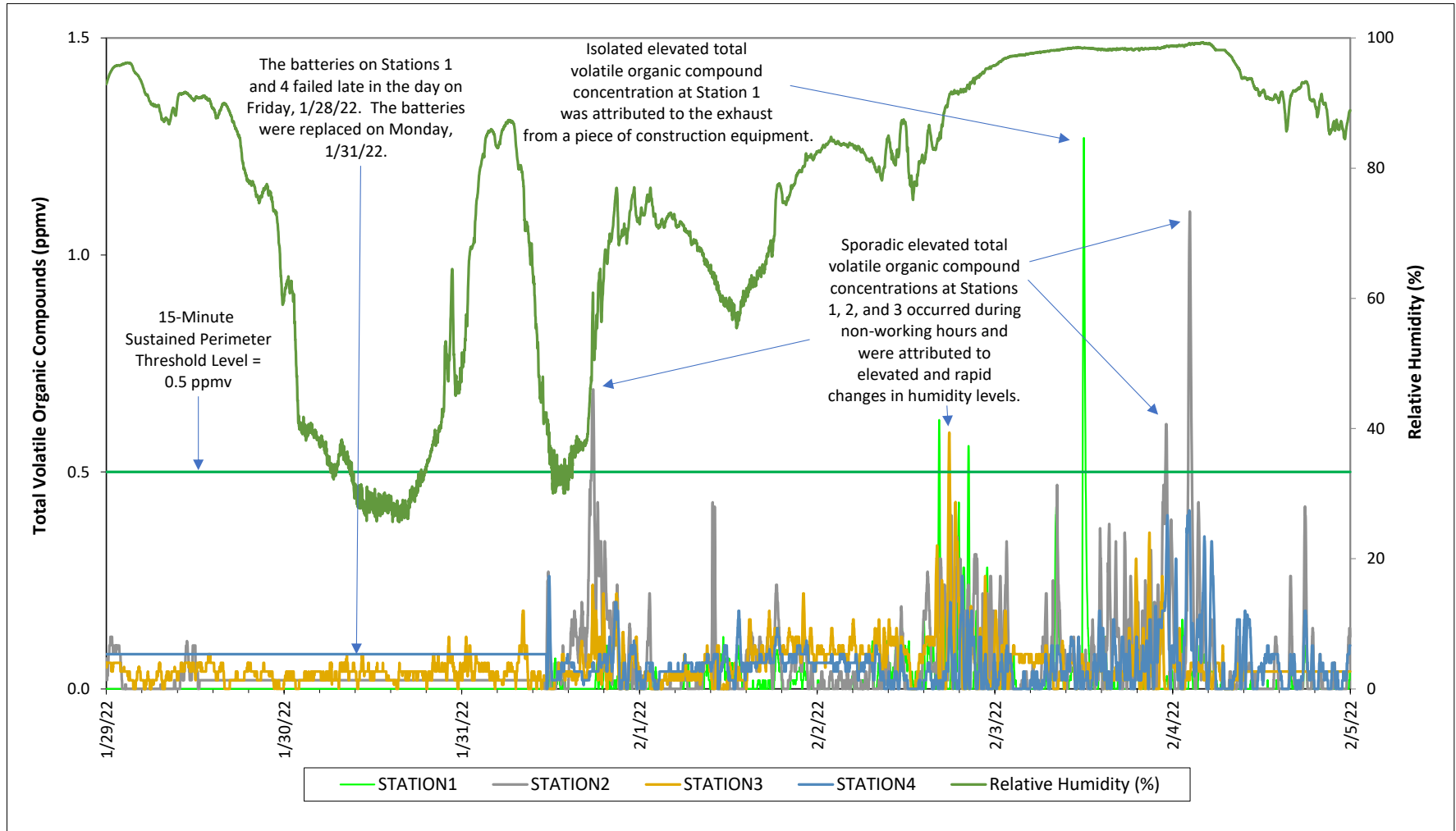


Prepared by National Grid for the Businesses and Residents Located Near the Former  
Tidewater Facility  
Air Quality Monitoring - Respirable Dust



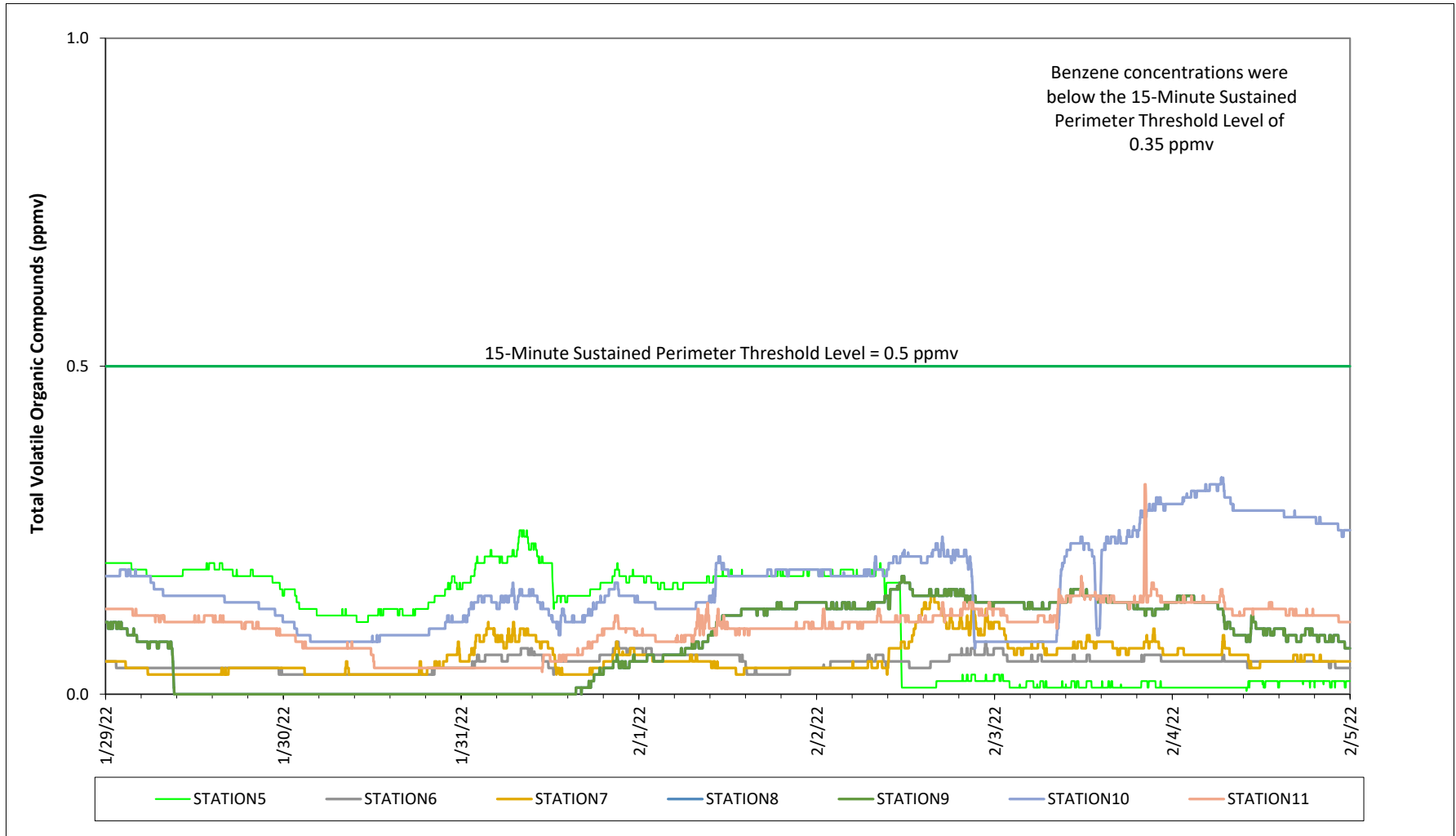
# Prepared by National Grid for the Businesses and Residents Located Near the Former Tidewater Facility

## Air Quality Monitoring - Total Volatile Organic Compounds



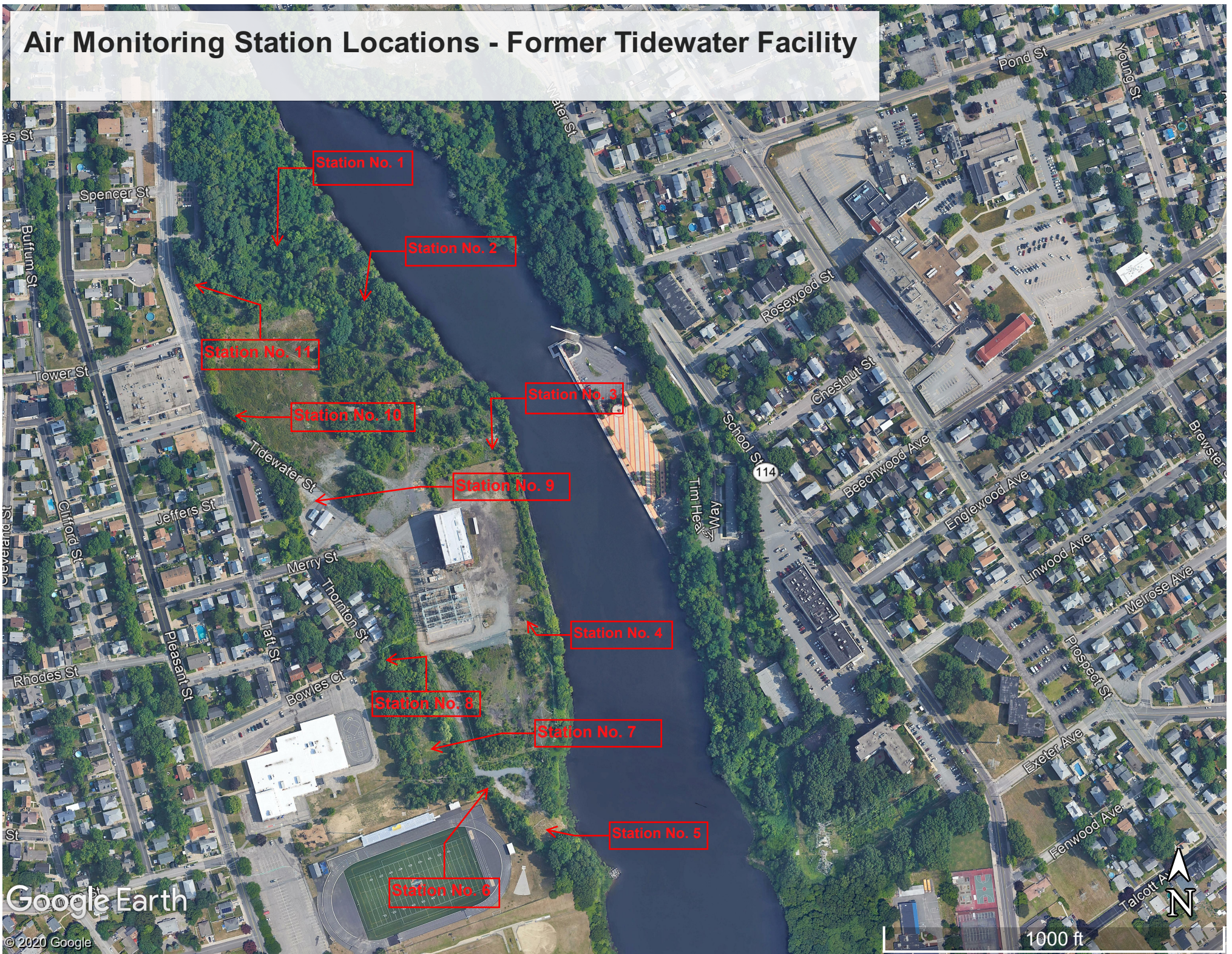
Prepared by National Grid for the Businesses and Residents Located Near the Former  
Tidewater Facility

Air Quality Monitoring - Total Volatile Organic Compounds





# Air Monitoring Station Locations - Former Tidewater Facility





**Prepared by National Grid for the Businesses and Residents Located Near the Former Tidewater Facility  
Weekly Ambient Air Sampling Results**

Sample Date	Compounds				
	Benzene	Toluene	Ethylbenzene	Total Xylenes	Naphthalene
	(ppb v/v)				
12-3-20 UP STREAM	0.13	0.22	0.079	0.054	< 0.5
12-3-20 DOWN STREAM	0.13	0.2	0.073	0.05	< 0.5
12-10-20 UP STREAM	0.25	0.23	< 0.2	0.14	< 0.5
12-10-20 DOWN STREAM	0.17	0.2	< 0.2	< 0.7	< 0.5
12-16-20 UP STREAM	0.19	0.2	0.083	0.12	< 0.5
12-16-20 DOWN STREAM	0.13	0.16	0.078	0.094	< 0.5
12-23-20 UP STREAM	0.15	0.16	< 0.2	0.1	< 0.5
12-23-20 DOWN STREAM	0.13	0.11	< 0.2	< 0.7	< 0.5
12-30-20 UP STREAM	0.21	0.22	< 0.2	< 0.7	< 0.5
12-30-20 DOWN STREAM	0.089	< 0.2	< 0.2	< 0.7	< 0.5
1/7/21 UP STREAM	0.29	1.5	0.22	2.1	< 0.5
1/7/21 DOWN STREAM	0.16	0.27	0.086	0.42	< 0.5
1/14/21 UP STREAM	0.43	0.44	< 0.2	0.23	< 0.5
1/14/21 DOWN STREAM	0.4	0.52	0.076	0.3	< 0.5
1-21-21 UPSTREAM	0.15	0.28	0.1	< 0.7	0.24
1-21-21 DOWNSTREAM	0.18	0.23	0.11	0.1	< 0.5
1-28-21 UPSTREAM	0.21	0.19	< 0.2	< 0.7	< 0.5
1-28-21 DOWNSTREAM	0.21	0.17	< 0.2	< 0.7	< 0.5
2-4-21 UPSTREAM	0.2	1.1	0.23	1.4	0.18
2-4-21 DOWNSTREAM	0.23	0.29	0.26	0.29	< 1.1
2-11-21 UPSTREAM	0.19	0.12	< 0.2	< 0.7	< 0.5
2-11-21 DOWNSTREAM	0.17	< 0.2	< 0.2	< 0.7	< 0.5
2-18-21 UPSTREAM	0.46	2.8	0.11	0.25	< 0.5
2-18-21 DOWNSTREAM	0.31	0.42	0.13	0.45	< 0.5
2-25-21 UPSTREAM	< 0.2	0.16	< 0.2	0.16	< 0.5
2-25-21 DOWNSTREAM	0.13	< 0.2	0.081	0.3	< 0.5
3-4-21 UPSTREAM	0.2	0.21	< 0.2	0.18	0.27
3-4-21 DOWNSTREAM	0.15	0.12	< 0.2	0.16	< 0.5
3-11-21 UPSTREAM	0.18	0.17	< 0.2	0.23	0.3
3-11-21 DOWNSTREAM	0.18	0.22	0.23	1.0	< 0.5
3-18-21 DOWNSTREAM	0.44	1.6	0.19	0.67	< 0.5
3-25-21 UPSTREAM	0.17	0.32	0.85	4.1	0.53
3-25-21 DOWNSTREAM	0.33	0.67	0.16	0.57	0.27
4-1-21 UPSTREAM	0.22	0.17	< 0.2	< 0.7	< 0.5
4-1-21 DOWNSTREAM	0.12	0.11	< 0.2	< 0.7	< 0.5
4-8-21 UPSTREAM	0.096	0.12	1.5	8.0	< 0.5
4-8-21 DOWNSTREAM	0.086	0.14	0.086	0.38	0.19
4-15-21 UPSTREAM	0.85	0.57	0.1	0.44	< 0.5
4-15-21 DOWNSTREAM	0.11	0.11	0.26	1.20	< 0.5
4-22-21 UPSTREAM	0.11	< 0.2	< 0.2	< 0.7	< 0.5
4-22-21 DOWNSTREAM	0.11	0.16	< 0.2	< 0.7	< 0.5
4-29-21 UPSTREAM	0.14	0.34	0.11	0.32	0.26
4-29-21 DOWNSTREAM	0.19	0.39	0.11	0.37	0.27
5-6-21 UPSTREAM	0.086	0.15	< 0.2	< 0.7	0.38
5-6-21 DOWNSTREAM	1.0	8.4	0.21	0.69	< 0.5
5-13-21 UPSTREAM	< 0.2	0.36	< 0.2	0.19	0.34
5-13-21 DOWNSTREAM	0.12	< 0.2	< 0.2	< 0.7	< 0.5
5-20-2021 UPSTREAM	0.38	2.5	< 0.2	< 0.7	< 0.5
5-20-2021 DOWNSTREAM	0.16	0.56	0.3	1.40	< 0.5
<b>Project Action Levels</b>	<b>6.2</b>	<b>80</b>	<b>230</b>	<b>23</b>	<b>20</b>



**Prepared by National Grid for the Businesses and Residents Located Near the Former Tidewater Facility  
Weekly Ambient Air Sampling Results**

Sample Date	Compounds				
	Benzene	Toluene	Ethylbenzene	Total Xylenes	Naphthalene
	(ppb v/v)				
5-27-21 UPSTREAM	0.095	0.12	0.45	2.10	0.4
5-27-21 DOWNSTREAM	0.075	0.094	< 0.2	< 0.7	< 0.5
6-3-21 UPSTREAM	< 0.2	0.16	< 0.2	< 0.7	< 0.5
6-3-21 DOWNSTREAM	0.075	0.11	< 0.2	< 0.7	< 0.5
6-10-21 UPSTREAM	< 0.2	< 0.2	< 0.2	< 0.7	< 0.5
6-10-21 DOWNSTREAM	< 0.2	< 0.2	< 0.2	< 0.7	< 0.5
6-17-21 UPSTREAM	0.64	0.6	0.48	0.66	0.64
6-17-21 DOWNSTREAM	0.12	0.12	0.16	< 0.7	< 0.5
6-24-21 UPSTREAM	< 0.2	0.17	< 0.2	< 0.7	< 0.5
6-24-21 DOWNSTREAM	< 0.2	0.45	0.19	0.82	< 0.5
7-1-21 UPSTREAM	1.10	7.9	0.12	0.39	< 0.7
7-1-21 DOWNSTREAM	0.13	0.74	< 0.2	0.29	< 0.7
7-8-21 UPSTREAM	< 0.2	0.29	< 0.2	0.38	0.29
7-8-21 DOWNSTREAM	< 0.2	< 0.2	< 0.2	< 0.7	< 0.5
7-15-21 UPSTREAM	0.10	0.28	< 0.2	0.32	< 0.5
7-15-21 DOWNSTREAM	0.14	0.37	0.31	1.5	< 0.5
7-22-21 UPSTREAM	0.27	0.3	< 0.2	< 0.7	< 0.5
7-22-21 DOWNSTREAM	0.30	0.33	< 0.2	< 0.7	< 0.5
7-29-21 UPSTREAM	0.22	0.26	0.1	0.56	0.19
7-29-21 DOWNSTREAM	0.099	0.23	< 0.2	< 0.7	< 0.5
8-5-21 UPSTREAM	0.70	1.2	< 0.2	0.17	< 0.5
8-5-21 DOWNSTREAM	0.310	0.53	< 0.25	< 0.88	< 0.63
8-12-21 UPSTREAM	0.19	0.18	< 0.2	< 0.7	0.2
8-12-21 DOWNSTREAM	1.2	0.7	< 0.2	0.31	< 0.5
8-19-21 UPSTREAM	0.66	6.2	1.2	3.50	< 1.6
8-19-21 DOWNSTREAM	0.21	0.24	< 0.2	0.11	< 0.5
8-26-21 UPSTREAM	0.34	0.73	0.22	0.90	0.18
8-26-21 DOWNSTREAM	0.34	0.63	0.24	0.87	0.31
9-1-21 UPSTREAM	0.17	0.34	< 0.2	< 0.7	< 0.5
9-1-21 DOWNSTREAM	0.18	0.35	< 0.2	0.19	< 0.5
9-9-21 UPSTREAM	0.12	0.22	< 0.2	0.28	< 0.5
9-9-21 DOWNSTREAM	< 0.2	0.89	< 0.2	< 0.7	0.42
9-16-21 UPSTREAM	0.14	0.26	0.11	0.31	0.3
9-16-21 DOWNSTREAM	0.11	0.26	< 0.2	0.28	< 0.5
9-23-21 UPSTREAM	< 0.2	0.12	< 0.2	< 0.7	< 0.5
9-23-21 DOWNSTREAM	< 0.2	0.12	< 0.2	< 0.7	< 0.5
9-30-21 UPSTREAM	0.17	0.37	0.23	0.66	< 0.51
9-30-21 DOWNSTREAM	0.086	0.21	< 0.2	< 0.7	< 0.5
10-7-21 UPSTREAM	0.24	0.55	0.14	0.41	< 0.5
10-7-21 DOWNSTREAM	< 0.2	0.42	0.11	0.16	< 0.5
10-14-21 UPSTREAM	0.19	0.40	< 0.2	< 0.7	< 0.5
10-14-21 DOWNSTREAM	0.34	0.89	0.23	0.75	< 0.5
10-22-21 UPWIND	0.14	0.32	< 0.2	< 0.7	< 0.5
10-22-21 DOWNWIND	0.13	0.39	< 0.2	0.43	< 0.5
10-28-21 UPWIND	0.41	0.14	0.46	0.10	< 0.5
10-28-21 DOWNWIND	0.18	0.43	< 0.2	< 0.70	< 0.5
11-4-2021 UPWIND	0.20	0.31	< 0.2	< 0.70	< 0.5
11-4-2021 DOWNWIND	0.14	0.23	< 0.2	< 0.7	< 0.5
11-11-21 UPWIND	0.23	0.45	0.17	0.51	0.35
11-11-21 DOWNWIND	0.31	0.69	0.18	0.56	< 0.5
11-18-21 DOWNWIND	0.14	0.29	< 0.2	< 0.7	< 0.5
11-18-2021 UPWIND	0.29	0.54	0.32	0.26	2.4
11-23-21 DOWNWIND	0.13	0.24	< 0.2	0.33	< 0.5
11-23-21 UPWIND	0.27	1.0	< 0.2	0.30	0.23
12-02-21 DOWNWIND	0.28	0.82	0.22	1.0	0.95
12-02-21 UPWIND	0.36	0.67	< 0.2	0.42	< 0.5
12-9-21 DOWNWIND	0.17	0.27	< 0.2	< 0.7	< 0.5
12-9-21 UPWIND	0.18	0.39	0.13	0.43	< 0.5
<b>Project Action Levels</b>	<b>6.2</b>	<b>80</b>	<b>230</b>	<b>23</b>	<b>20</b>

**Notes:**

1. The Project Action Levels are consistent with the Air Quality Monitoring Plan developed for the Site.
2. Air samples are collected in stainless steel summa canisters over an approximately 8-hour period.
3. Air samples are analyzed by EuroFins TestAmerica of Burlington, VT.
4. Results and action levels are listed in parts per billion volume/volume (ppb v/v).
5. An upstream ambient air sample was not collected on March 18, 2021 due to a problem with the sampling equipment.

**Prepared by National Grid for the Businesses and Residents Located Near the Former Tidewater Facility  
Weekly Ambient Air Sampling Results**

Sample Date	Compounds				
	Benzene	Toluene	Ethylbenzene	Total Xylenes	Naphthalene
	(ppb v/v)				
12-16-21 DOWNWIND	0.15	0.21	< 0.2	0.38	0.89
12-16-21 UPWIND	0.13	0.16	< 0.2	< 0.7	< 0.5
12-22-21 DOWNWIND	0.27	0.39	< 0.2	< 0.7	< 0.5
12-22-21 UPWIND	0.29	0.47	0.12	< 0.5	< 0.5
12-29-21 UPWIND	0.19	0.28	< 0.2	< 0.7	< 0.5
12-29-21 DOWNWIND	0.26	0.53	0.19	1.0	< 0.5
01-05-2022 UPWIND	0.28	0.38	0.14	0.38	0.2
01-05-2022 DOWNWIND	0.40	1.10	0.16	0.5	0.71
1-13-22 UPWIND	0.49	0.91	0.15	0.59	< 0.5
1-13-22 DOWNWIND	0.83	1.40	0.19	0.79	< 0.5
1-20-22 DOWNWIND	0.18	0.32	0.11	0.34	0.17
1-20-22 UPWIND	0.14	1.40	< 0.2	< 0.7	< 0.5
UPWIND 012722	0.24	0.26	< 0.2	< 0.7	< 0.5
DOWNWIND 012722	0.30	1.0	< 0.2	0.4	< 0.5
2/3/22 UPWIND	0.27	0.50	0.1	0.28	< 0.5
2/3/22 DOWNWIND	0.30	0.49	0.12	0.46	0.22
<b>Project Action Levels</b>	<b>6.2</b>	<b>80</b>	<b>230</b>	<b>23</b>	<b>20</b>

**Notes:**

1. The Project Action Levels are consistent with the Air Quality Monitoring Plan developed for the Site.
2. Air samples are collected in stainless steel summa canisters over an approximately 8-hour period.
3. Air samples are analyzed by EuroFins TestAmerica of Burlington, VT.
4. Results and action levels are listed in parts per billion volume/volume (ppb v/v).
5. An upstream ambient air sample was not collected on March 18, 2021 due to a problem with the sampling equipment.