



# Freshwater Wetland General Permit Application

How to access the web browser and Survey123 field  
application versions of the online Freshwater Wetlands  
General Permit Application

Groundwater & Freshwater Wetlands Protection

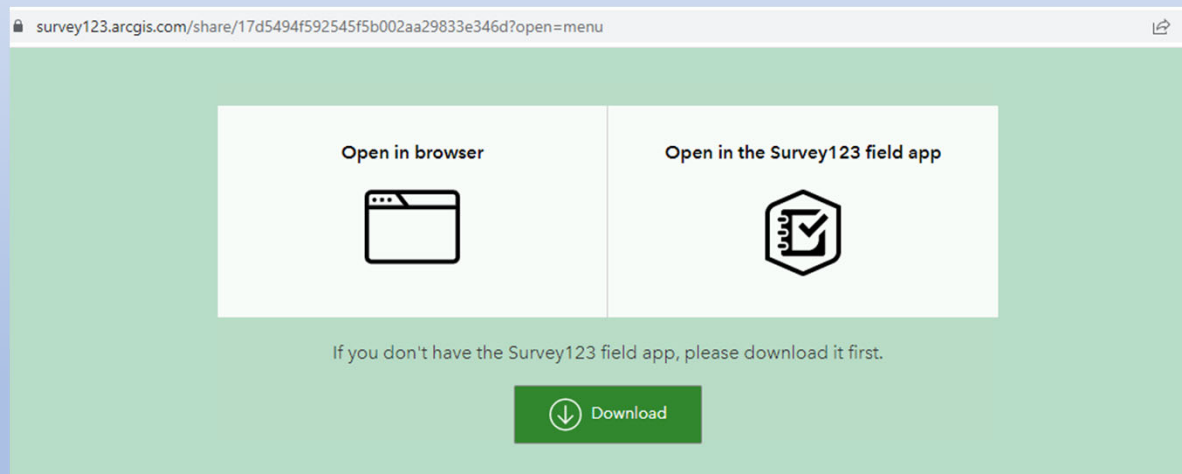
RIDEM Office of Water Resources

October 31, 2022

# Accessing the Freshwater Wetlands General Permit Application



- The Freshwater Wetlands General Permit Application can be accessed through the [DEM Applications & Forms webpage](#).
- Once you click the link, you'll see this screen with two options for opening the application:

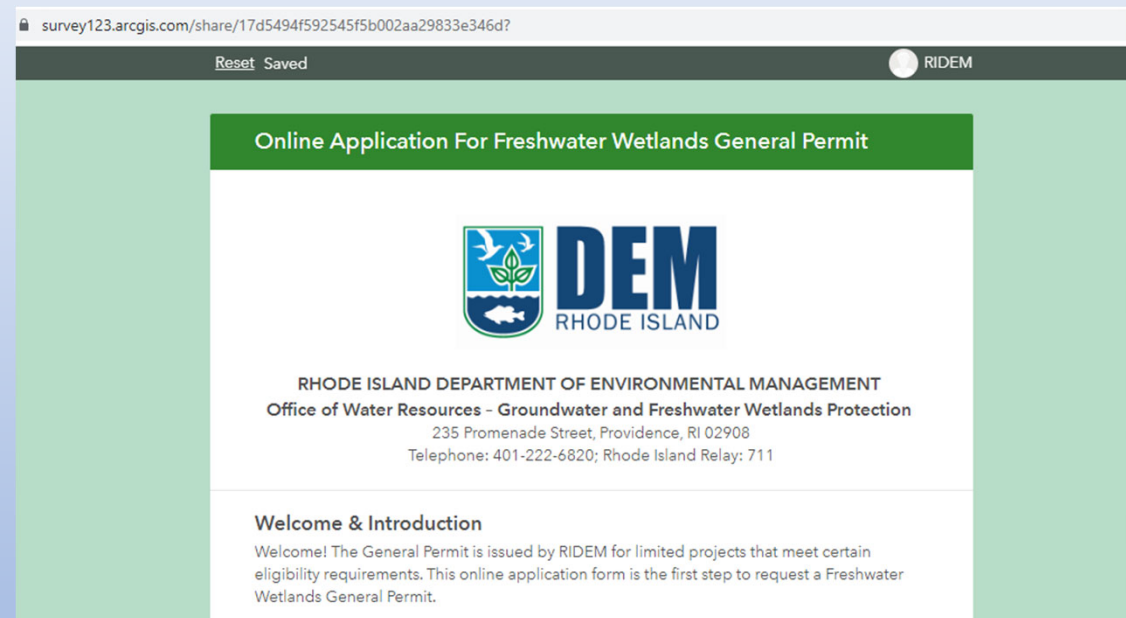


QUESTIONS? Visit [dem.ri.gov/newwetlandrules](http://dem.ri.gov/newwetlandrules)

# Using the Web Browser Version



- Unless you're planning to work on multiple Freshwater Wetlands General Permit applications at the same time, the web browser version is the best to use.
- Click on the "Open in browser" rectangle and the application will open. The Welcome & Introduction section contains guidance for filling out the application form and completing the application process.
- Once you begin the application, a gray bar will appear at the top of the screen to let you know that the form is automatically saving your progress. If you want to clear your progress and start over, click "Reset."



# Using the Survey 123 Field Application Version



- If you're planning to create and manage multiple Freshwater Wetlands General Permit applications at the same time, the Survey 123 Field Application is the optimal version.
- If you don't have the Survey123 Field Application on your device, click on the green "Download" button to download and install. [If you already have it, skip to the next page.]
- Scroll toward the bottom of the screen and under "ArcGIS Survey123 field app," and click on "Windows x64" for home computers.
- You can also download the Survey123 field app from the Microsoft Store, App Store, or Google Play. Follow the instructions and installation wizard on your device.

esri.com/en-us/arcgis/products/arcgis-survey123/downloads

ArcGIS Survey123

Overview Gallery Resources Downloads Sign In

If you have already purchased a user type, you can select a download option. If you haven't purchased a user type, explore your purchase options.

Go to pricing →

Get the ArcGIS Survey123 field app

Download from the Microsoft Store, App Store, or Google Play to get automatic updates

Get ArcGIS Survey123 Connect

Download from the Microsoft Store to get automatic updates

Download ArcGIS Survey123

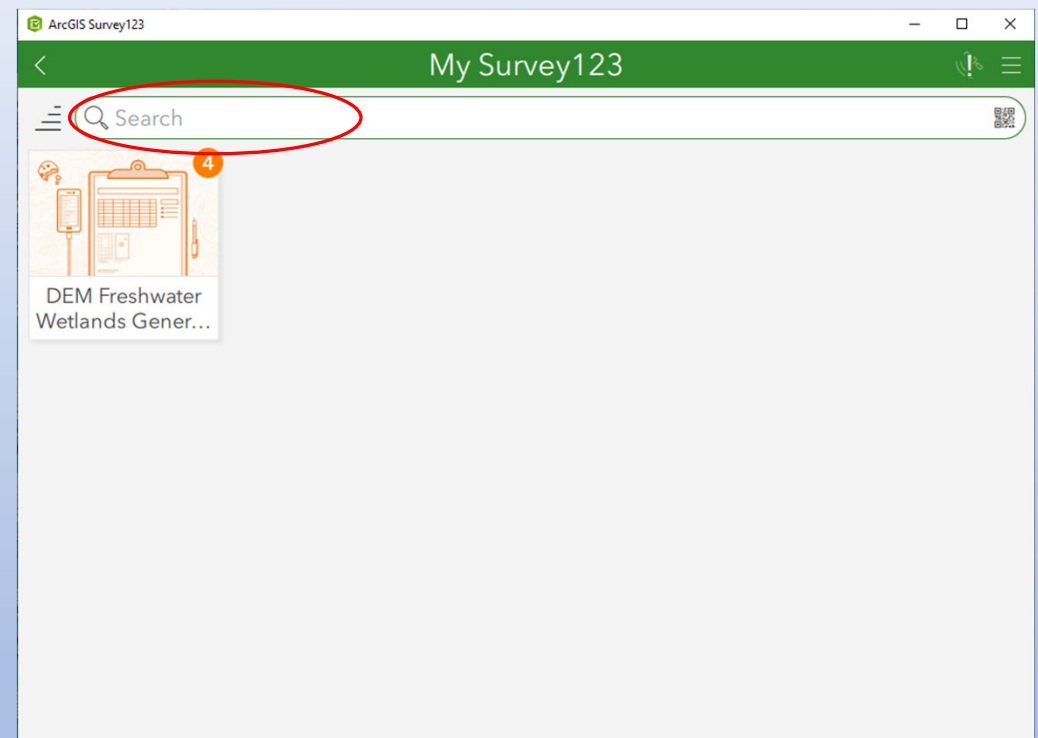
Download installation files from Esri

ArcGIS Survey123 field app	ArcGIS Survey123 Connect
Windows x64	Windows x64
Android Arm v8 (64 bit)	
Android ARM v7 (32 bit)	

# Using the Survey 123 Field Application Version



- Once the Survey123 field application has been installed on your device, enter the URL for the DEM Freshwater Wetlands General Permit (<https://survey123.arcgis.app/?itemID=17d5494f592545f5b002aa29833e346d>) into the Search bar at the top of the Survey123 field application home screen.
- You'll only need to enter the URL once to link the Survey123 field app



# Using the Survey 123 Field Application Version



- Select “Collect” to open a new, blank Freshwater Wetlands General Permit application
- Once you start an application, it will appear in “Drafts” where you can manage and open applications that are in process.
- The Welcome & Introduction section contains guidance for filling out the application form and completing the application process.

Need assistance or have questions about setting up the Survey123 field application? Contact [sean.mccormick@dem.ri.gov](mailto:sean.mccormick@dem.ri.gov)

