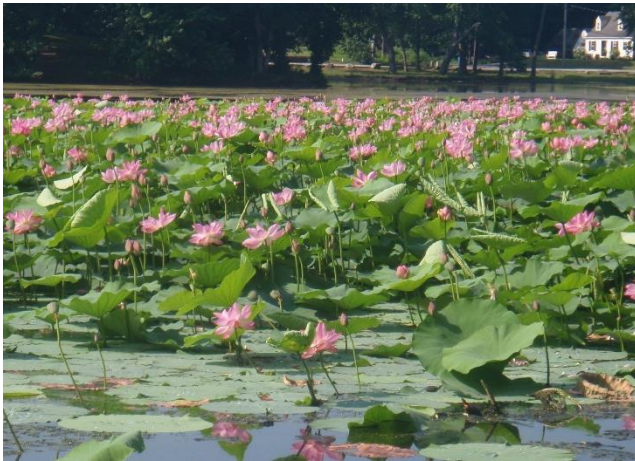


Freshwater Aquatic Invasive Species in Rhode Island

Species-specific Statewide Distributions

November 2023



Rhode Island Department of Environmental Management

Office of Water Resources

235 Promenade Street – Room 200

Providence, RI 02908

Acknowledgements

The Rhode Island Department of Environmental Management's aquatic invasive species (AIS) monitoring activities are supported in part with federal funding provided by the US Environmental Protection Agency under Section 106 of the Clean Water Act and in coordination with the Rhode Island Coastal Resources Management Council provided by the United States Fish and Wildlife Service under The Aquatic Nuisance Species Task Force as authorized under Section 1204 of the Aquatic Nuisance Species Prevention and Control Act. The monitoring activities are supported with technical assistance from the New England Interstate Water Pollution Control Commission. Many thanks to over thirty Seasonal Technical Support Interns, and other staff in the RIDEM Office of Water Resources who have contributed (in fieldwork or office capacities) to documenting these invasives each year since 2007. For specific questions about this document, please contact Katie DeGoosh-DiMarzio at (401) 222-4700 x 7211 or email katie.degoosh@dem.ri.gov.

Photo Documentation*

Cover photos by RIDEM: Water Chestnut in Central Pond, East Providence (2022); Asian Clam in Lake Mishnock, Coventry (2015); Sacred Lotus in Meshanticut Pond, Cranston (2018); Variable Milfoil in Alton Pond, Richmond (2018).

Photo of variable milfoil (pages 1-7) by RIDEM, taken at Locustville Pond, Hopkinton, 2015

Photo of fanwort (pages 8-14) by RIDEM, taken from Johnson's Pond (Flat Riv. Res.), Coventry, 2008

Photo of water chestnut (pages 15-17) by RIDEM, taken at Chapman Pond, Westerly, 2009

Photo of Curly-leaf pondweed (pages 18-20) by RIDEM, taken from Pawtuxet River (mainstem), 2009

Photo of mudmat (pages 21 & 22) by RIDEM, taken from Yawgoo Pond, South Kingstown, 2010

Photo of Eurasian milfoil (pages 23-25) by RIDEM, taken from Blackstone River, 2009

Photo of spiny naiad (pages 26 & 27) by RIDEM, taken at Chapman Pond, Westerly, 2010

Photo of inflated bladderwort (pages 28 & 29) by RIDEM, taken from Spring Lake, Burrillville, 2010

Photo of water hyacinth (page 30 & 31) by RIDEM, taken at Pawcatuck River, White Rock Dam, 2012

Photo of Brazilian elodea (page 32 & 33) by RIDEM, taken from Arnold Pond, Coventry, 2009

Photo of yellow floating heart (page 34 & 35) by RIDEM, taken at Dexter Pond, Scituate, 2010

Photo of Hydrilla (page 36 & 37) by RIDEM, taken from Indian Lake, South Kingstown, 2023

Photo of American lotus (page 38 & 39) by RIDEM, taken at Chapman Pond, Westerly, 2010

Photo of parrot feather (page 40 & 41) by RIDEM, at Pocasset Pond (Memorial Park Pond), Johnston, 2014

Photo of sacred lotus (page 42 & 43) by RIDEM, taken at Meshanticut Pond, Cranston, 2018

Photo of Chinese mystery snail (page 44) by RIDEM, taken at Oak Swamp Reservoir, Johnston, 2009

Photo of Chinese mystery snail (pages 45 & 46) by RIDEM, taken at Turner Reservoir, E. Providence, 2011

Photo of Asian clam (pages 47-49) by RIDEM, taken from Lake Mishnock, West Greenwich, 2009

Overview and Contents

Between 2007 and 2023 the Rhode Island Department of Environmental Management, Office of Water Resources (OWR) has been documenting the presence of aquatic invasive species (AIS) in lakes, ponds and rivers, statewide. RIDEM OWR monitors approximately 20 lakes or ponds during the summer by visually surveying for invasives, and as resources allow, may visit additional ponds in response to public concerns. To date, RIDEM has visited 171 lakes or ponds, and visited hundreds of sites on streams.

As of November 2023, at least one invasive species was documented by RIDEM staff at 112 lakes or ponds (66% of the visited locations) in addition to invasives found at sites along 29 distinct rivers. A map of this data and list of each location by town, with the invasives species that were identified can be downloaded here: <http://www.dem.ri.gov/programs/benviron/water/wetlands/pdfs/invasive.pdf>. Provided herein are maps showing the species-specific statewide distribution of 17 different invasive species (see page number below) accompanied by a list of locations where the species was documented (plants in order below from least to most common).

Number of Documented Freshwaters with Invasive Species (as of November 14, 2023) (listed most common to least common)					
Invasive Species	Scientific Name	Rivers	Lakes/Ponds	Total	Page Number
1. Variable milfoil	<i>Myriophyllum heterophyllum</i>	19	72	91	(1)
2. Fanwort	<i>Cabomba caroliniana</i>	16	63	79	(8)
3. Water chestnut	<i>Trapa natans</i>	4	19	23	(15)
4. Curly-leaf pondweed	<i>Potamogeton crispus</i>	7	14	21	(18)
5. Mudmat	<i>Glossostigma cleistanthum</i>	0	13	13	(21)
6. Eurasian milfoil	<i>Myriophyllum spicatum</i>	2	11	13	(23)
7. Spiny naiad	<i>Najas minor</i>	0	11	11	(26)
8. Inflated bladderwort	<i>Utricularia inflata</i>	0	10	10	(28)
9. Water hyacinth	<i>Eichhornia crassipes</i>	1	4	5	(30)
10. Brazilian elodea	<i>Egeria densa</i>	0	5	5	(32)
11. Yellow floating heart	<i>Nymphoides peltata</i>	0	3	3	(34)
12. Hydrilla	<i>Hydrilla verticillata</i>	0	3	3	(36)
13. American lotus	<i>Nelumbo lutea</i>	0	2	2	(38)
14. Parrot feather	<i>Myriophyllum aquaticum</i>	0	1	1	(40)
15. Sacred lotus	<i>Nelumbo nucifera</i>	0	1	1	(42)
16. Chinese mystery snail	<i>Cipangopadula chinensis</i>	3	29	32	(44)
17. Asian clam	<i>Corbicula fluminea</i>	8	20	28	(47)
Total waterbodies with at least one invasive*		29	112	*some waterbodies have more than one invasive species; therefore, total reflects distinct waterbodies	

Fact Sheets

For more information on the specific invasive species, fact sheets are also available on the RIDEM website:

American Lotus

<http://www.dem.ri.gov/programs/benviron/water/quality/surfwq/aisfs/lotus-fs.pdf>

Asian Clam

<http://www.dem.ri.gov/programs/benviron/water/quality/surfwq/aisfs/corflu-fs.pdf>

Brazilian Elodea

<http://www.dem.ri.gov/programs/benviron/water/quality/surfwq/aisfs/egeden-fs.pdf>

Chinese Mystery Snail

<http://www.dem.ri.gov/programs/benviron/water/quality/surfwq/aisfs/cipchi-fs.pdf>

Curly-leaf Pondweed

<http://www.dem.ri.gov/programs/benviron/water/quality/surfwq/aisfs/potcri-fs.pdf>

Eurasian milfoil

<http://www.dem.ri.gov/programs/benviron/water/quality/surfwq/aisfs/myrspf-fs.pdf>

Fanwort

<http://www.dem.ri.gov/programs/benviron/water/quality/surfwq/aisfs/cabcar-fanwort-fs.pdf>

Inflated Bladderwort

<http://www.dem.ri.gov/programs/benviron/water/quality/surfwq/aisfs/bladderwort-fs.pdf>

Mudmat

<http://www.dem.ri.gov/programs/benviron/water/quality/surfwq/aisfs/glocle-fs.pdf>

Parrot Feather

<http://www.dem.ri.gov/programs/benviron/water/quality/surfwq/aisfs/myraqf-fs.pdf>

Spiny Naiad

<http://www.dem.ri.gov/programs/benviron/water/quality/surfwq/aisfs/najmin-fs.pdf>

Variable Milfoil

<http://www.dem.ri.gov/programs/benviron/water/quality/surfwq/aisfs/variable-milfoil-fs.pdf>

Water Chestnut

<http://www.dem.ri.gov/programs/benviron/water/quality/surfwq/aisfs/tranat-fs.pdf>

Water Hyacinth

<http://www.dem.ri.gov/programs/benviron/water/quality/surfwq/aisfs/eiccra-fs.pdf>

Yellow Floating Heart

<http://www.dem.ri.gov/programs/benviron/water/quality/surfwq/aisfs/nympel-fs.pdf>

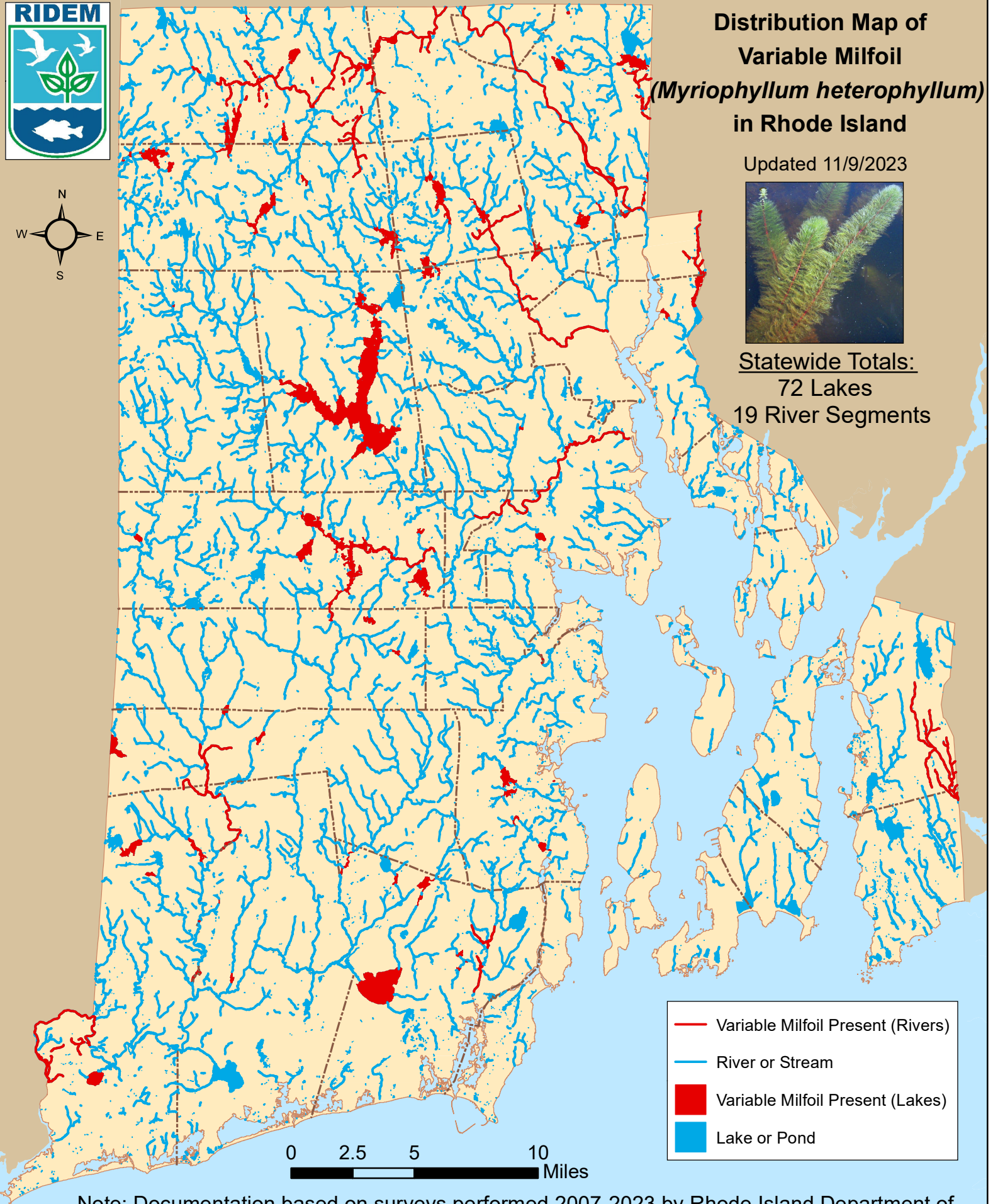


Distribution Map of Variable Milfoil (*Myriophyllum heterophyllum*) in Rhode Island

Updated 11/9/2023



Statewide Totals:
72 Lakes
19 River Segments



- Variable Milfoil Present (Rivers)
- River or Stream
- Variable Milfoil Present (Lakes)
- Lake or Pond

Note: Documentation based on surveys performed 2007-2023 by Rhode Island Department of Environmental Management (RIDEM) Office of Water Resources. AIS refers only to those plant species present in the floating and submergent plant communities. More information available online: <http://www.dem.ri.gov/programs/water/quality/surface-water/aisplant.php>



Distribution of variable milfoil (*M. heterophyllum*) in RI

river segments listed first alphabetically; then lakes listed by city or town

<u>Town</u>	<u>Waterbody Name</u>	<u>First documented</u>	<u>Last Surveyed</u>
<u>RIVERS</u>			
1	Abbott Run Brook North & Tribs	7/7/2009	6/22/2022
2	Adamsville Brook & Tribs	9/7/2012	9/7/2012
3	Blackstone River (Seg A)	7/22/2009	6/20/2023
4	Branch River & Tribs (Seg A)	7/15/2009	7/20/2009
5	Branch River & Tribs (Seg B)	7/15/2009	7/15/2009
6	Clear River & Tribs (Seg C)	8/1/2007	10/12/2023
7	Clear River (Seg D)	8/1/2007	8/1/2007
8	Pawcatuck River & Tribs	8/6/2009	9/8/2020
9	Pawtuxet River (Main Stem)	6/28/2010	9/9/2020
10	Pawtuxet River (South Branch Seg A)	6/27/2018	6/27/2018
11	Saugatucket River & Tribs	7/20/2010	7/20/2010
12	Tarkiln Brook & Tribs (Seg A)	7/20/2009	7/20/2009
13	Tarkiln Brook & Tribs (Seg B)	5/20/2009	7/20/2009
14	Ten Mile River & Tribs (Seg A)	8/10/2007	8/1/2023
15	Wood River & Tribs (Seg A)	7/9/2009	7/10/2009
16	Wood River (Seg B)	9/30/2008	8/16/2012
17	Woonasquatucket River & Tribs (Seg B)	6/1/2009	6/28/2019
18	Woonasquatucket River & Tribs (Seg C)	6/1/2009	6/4/2019
19	Woonasquatucket River (Seg D)	6/17/2009	6/28/2019

Burrillville



Distribution of variable milfoil (*M. heterophyllum*) in RI

river segments listed first alphabetically; then lakes listed by city or town

<u>Town</u>	<u>Waterbody Name</u>	<u>First documented</u>	<u>Last Surveyed</u>
<u>Burrillville</u>			
20	Echo Lake (Pascoag Reservoir)	9/12/2008	9/13/2012
21	Round Top State Pond	6/11/2010	6/26/2019
22	Spring Lake (Herring Pond)	6/3/2010	8/24/2023
23	Sucker Pond	8/20/2018	8/20/2018
<u>Central Falls</u>			
24	Valley Falls Pond	8/9/2017	9/16/2022
<u>Coventry</u>			
25	Carbuncle Pond	6/15/2009	8/31/2020
26	Coventry Reservoir (Stump Pond)	9/4/2008	9/27/2023
27	Flat River Reservoir (Johnson Pond)	8/22/2008	10/13/2023
		10/13/2023	10/13/2023
28	Johnson's Pond	8/22/2008	10/13/2023
		10/13/2023	10/13/2023
29	Tiogue Lake	9/5/2007	9/9/2020
30	Upper Dam Pond	8/28/2020	8/28/2020
<u>Cranston</u>			
31	Meshanticut Pond	8/6/2018	9/20/2023
<u>Cumberland</u>			
32	Arnold Mills Reservoir (Pawtucket Reservoir)	6/24/2011	6/24/2011
33	Carls Pond	9/1/2020	8/17/2023
34	Happy Hollow Pond	8/18/2010	8/18/2010
35	Robin Hollow Pond	8/18/2010	8/18/2010



Distribution of variable milfoil (*M. heterophyllum*) in RI

river segments listed first alphabetically; then lakes listed by city or town

<u>Town</u>	<u>Waterbody Name</u>	<u>First documented</u>	<u>Last Surveyed</u>
<u>Cumberland</u>			
36	Sneech Pond	6/3/2010	9/24/2018
37	Sylvn's Pond (Sylvn's Brook Pond)	8/7/2014	10/4/2017
<u>East Providence</u>			
38	Central Pond	9/30/2009	8/13/2020
39	Omega Pond	6/17/2022	7/5/2023
40	Willet Pond	9/11/2012	8/1/2022
<u>Exeter</u>			
41	Beach Pond	6/19/2019	6/19/2019
42	Boone Lake	8/25/2011	8/25/2011
43	Breakheart Pond	9/5/2007	8/19/2020
<u>Foster</u>			
44	Shippee Saw Mill Pond	9/26/2007	8/15/2017
<u>Glocester</u>			
45	Bowdish Reservoir	9/25/2007	6/15/2018
46	Clarksville Pond	6/30/2010	8/24/2018
47	Hawkins Pond (Glocester)	9/28/2016	9/28/2016
48	Keech Pond	9/26/2007	8/1/2017
49	Lake Washington	8/2/2007	6/10/2019
50	Sawmill Pond	6/30/2010	9/5/2018
51	Smith & Sayles Reservoir	9/26/2007	8/30/2021
52	Spring Grove Pond	10/5/2009	6/8/2018
53			



Distribution of variable milfoil (*M. heterophyllum*) in RI

river segments listed first alphabetically; then lakes listed by city or town

<u>Town</u>	<u>Waterbody Name</u>	<u>First documented</u>	<u>Last Surveyed</u>
<u>Glocester</u>			
53	Waterman Reservoir	7/17/2009	7/27/2016
<u>Hopkinton</u>			
54	Alton Pond	9/5/2007	9/28/2023
55	Ashville Pond	9/5/2007	7/5/2019
56	Locustville Pond	9/3/2008	9/14/2023
57	Wincheck Pond	6/2/2011	6/2/2011
58	Wyoming Pond	9/30/2008	9/26/2023
<u>Johnston, Smithfield</u>			
59	Slack Reservoir	7/13/2009	10/19/2011
<u>Lincoln</u>			
60	Barney Pond	6/29/2022	7/26/2023
61	Olney Pond	5/27/2010	8/3/2023
<u>North Kingstown</u>			
62	Belleville Ponds	9/10/2007	7/20/2023
63	Carr Pond (N. Kingstown)	9/28/2009	6/16/2016
64	Mill Pond (NK)	8/2/2018	8/2/2018
65	Potowomut Pond	8/29/2008	8/17/2021
66	Secret Lake	7/3/2009	6/18/2010
67	Silver Spring Lake	8/27/2009	9/21/2023
<u>North Providence</u>			
68	Wenscott Reservoir (Twin Rivers)	6/10/2009	8/3/2022

North Smithfield



Distribution of variable milfoil (*M. heterophyllum*) in RI

river segments listed first alphabetically; then lakes listed by city or town

<u>Town</u>	<u>Waterbody Name</u>	<u>First documented</u>	<u>Last Surveyed</u>
<u>North Smithfield</u>			
69	Slatersville Reservoir	9/25/2007	8/23/2023
70	Tarkiln Pond	6/25/2009	8/30/2018
<u>Richmond</u>			
71	Carolina Trout Pond	7/9/2009	8/28/2017
72	Meadowbrook Pond (Sandy Pond)	10/6/2009	8/21/2017
<u>Scituate</u>			
73	Peep-toad Pond	8/23/2012	8/23/2012
74	Regulating Reservoir	6/17/2010	7/11/2012
75	Scituate Reservoir	8/2/2011	8/3/2011
<u>Smithfield</u>			
76	Georgiaville Pond	8/7/2007	6/28/2019
77	Hawkins Pond	6/23/2015	9/14/2018
78	Woonasquatucket Reservoir (Stump Pond)	7/13/2009	7/31/2018
<u>South Kingstown</u>			
79	Asa Pond	7/2/2019	7/2/2019
80	Barber Pond	8/29/2007	7/27/2017
81	Glen Rock Reservoir	7/1/2010	9/6/2018
82	Hundred Acre Pond	9/3/2009	9/3/2009
83	Peace Dale Reservoir	7/12/2012	8/10/2017
84	Rocky Brook Reservoir	6/14/2010	8/2/2018
85	Thirty Acre Pond	9/3/2009	9/3/2009
86			



Distribution of variable milfoil (*M. heterophyllum*) in RI

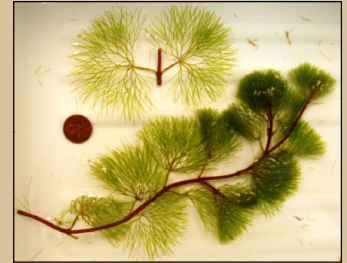
river segments listed first alphabetically; then lakes listed by city or town

<u>Town</u>	<u>Waterbody Name</u>	<u>First documented</u>	<u>Last Surveyed</u>
<u>South Kingstown</u>			
86	Worden Pond	10/2/2009	10/2/2009
<u>Warwick</u>			
87	Gorton Pond	8/2/2022	8/22/2023
<u>West Greenwich</u>			
88	Mishnock Lake	9/4/2008	9/27/2023
89	Reynolds Pond	9/5/2007	7/20/2023
90	Tarbox Pond	9/5/2007	5/22/2021
<u>Westerly</u>			
91	Chapman Pond	7/14/2020	8/10/2022
<u>Woonsocket</u>			
92	Sylvestre Pond	5/27/2015	7/13/2023

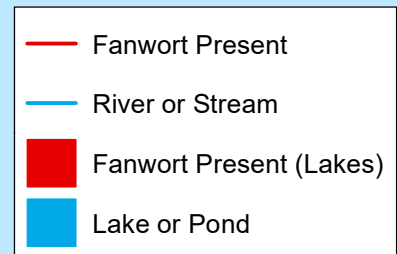
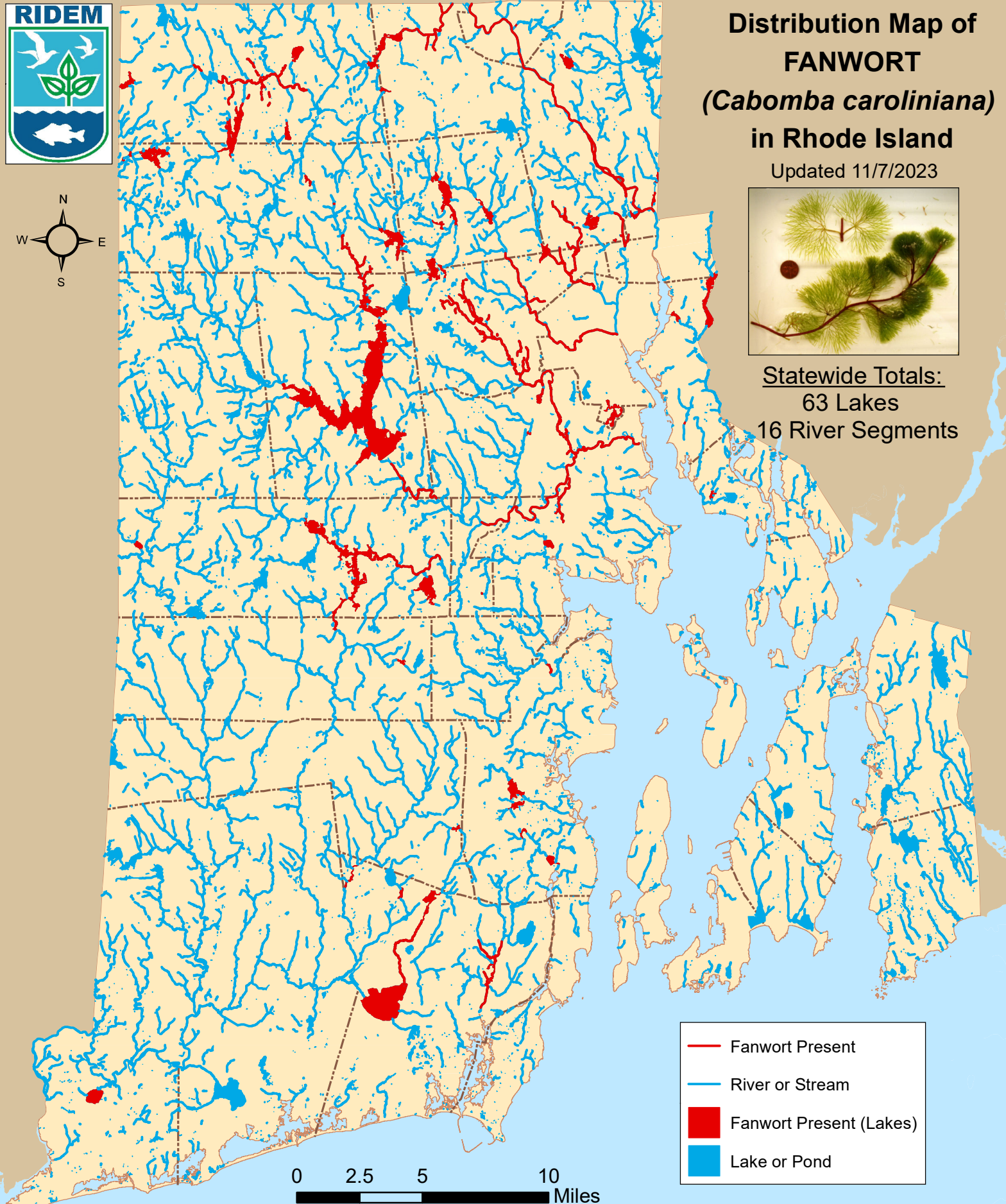


Distribution Map of FANWORT (*Cabomba caroliniana*) in Rhode Island

Updated 11/7/2023



Statewide Totals:
63 Lakes
16 River Segments



Note: Documentation based on surveys performed 2007-2023 by Rhode Island Department of Environmental Management (RIDEM) Office of Water Resources. AIS refers only to those plant species present in the floating and submergent plant communities. More information available online: <http://www.dem.ri.gov/programs/water/quality/surface-water/aisplant.php>



Distribution of fanwort (*Cabomba caroliniana*) in RI

river segments listed first alphabetically; then lakes listed by city or town

<u>Town</u>	<u>Waterbody Name</u>	<u>First documented</u>	<u>Last Surveyed</u>
<u>RIVERS</u>			
1	Blackstone River (Seg A)	7/29/2008	6/20/2023
2	Branch River & Tribs (Seg B)	7/15/2009	7/15/2009
3	Chipuxet River (Seg C)	10/2/2009	10/2/2009
4	Clear River & Tribs (Seg C)	6/25/2009	10/12/2023
5	Moshassuck River & Tribs (Seg B)	8/17/2009	8/17/2009
6	Pawtuxet River (Main Stem)	7/30/2008	9/9/2020
7	Pawtuxet River (North Branch Seg B)	6/17/2019	6/17/2019
8	Pawtuxet River (South Branch Seg A)	6/27/2018	6/27/2018
9	Peeptoad Brook & Tribs	7/1/2008	7/1/2008
10	Pocasset River & Tribs (Seg A)	7/1/2019	7/1/2019
11	Pocasset River & Tribs (Seg B)	8/8/2018	9/5/2018
12	Saugatucket River & Tribs	7/20/2010	7/20/2010
13	Three Pond Brook	6/19/2012	6/19/2012
14	West River & Tribs (Seg B)	7/14/2009	7/14/2009
15	Woonasquatucket River & Tribs (Seg C)	8/25/2009	6/4/2019
16	Woonasquatucket River (Seg D)	6/17/2009	6/28/2019
<u>Barrington</u>			
17	Echo Lake	9/11/2012	9/17/2020



Distribution of fanwort (*Cabomba caroliniana*) in RI

river segments listed first alphabetically; then lakes listed by city or town

<u>Town</u>	<u>Waterbody Name</u>	<u>First documented</u>	<u>Last Surveyed</u>
<u>Burrillville</u>			
18	Echo Lake (Pascoag Reservoir)	9/25/2007	9/13/2012
19	Spring Lake (Herring Pond)	9/25/2007	8/24/2023
20	Sucker Pond	10/9/2009	8/20/2018
21	Wakefield Pond	9/10/2007	8/22/2017
<u>Central Falls</u>			
22	Valley Falls Pond	8/9/2017	9/16/2022
<u>Coventry</u>			
23	Carbuncle Pond	9/5/2007	8/31/2020
24	Flat River Reservoir (Johnson Pond)	9/5/2007	10/13/2023
		10/13/2023	10/13/2023
25	Johnson's Pond	9/5/2007	10/13/2023
		10/13/2023	10/13/2023
26	Maple Root Pond	7/27/2016	7/27/2016
27	Tiogue Lake	9/5/2007	9/9/2020
<u>Cranston</u>			
28	Meshanticut Pond	8/6/2018	9/20/2023
29	Print Works Pond	8/7/2009	8/7/2009
30	Randall Pond	7/13/2011	7/19/2017
<u>Cumberland</u>			
31	Happy Hollow Pond	8/18/2010	8/18/2010



Distribution of fanwort (*Cabomba caroliniana*) in RI

river segments listed first alphabetically; then lakes listed by city or town

<u>Town</u>	<u>Waterbody Name</u>	<u>First documented</u>	<u>Last Surveyed</u>
32	Robin Hollow Pond	8/18/2010	8/18/2010
33	Sneech Pond	6/3/2010	9/24/2018
34	Sylvn's Pond (Sylvn's Brook Pond)	8/7/2014	10/4/2017
<u>East Providence</u>			
35	Central Pond	9/30/2009	8/13/2020
36	Omega Pond	6/17/2022	7/5/2023
37	Turner Reservoir	8/12/2020	7/15/2023
38	Willet Pond	9/11/2012	8/1/2022
<u>Exeter</u>			
39	The Reservoir	7/29/2009	7/29/2009
40	Warwick Sportsman's Association Pond	10/14/2016	9/24/2018
<u>Glocester</u>			
41	Bowdish Reservoir	9/20/2010	6/15/2018
42	Clarksville Pond	6/30/2010	8/24/2018
43	Hawkins Pond (Glocester)	9/28/2016	9/28/2016
44	Sawmill Pond	6/30/2010	9/5/2018
45	Spring Grove Pond	10/5/2009	6/8/2018
46	Waterman Reservoir	7/17/2009	7/27/2016
<u>Johnston, Smithfield</u>			
47	Slack Reservoir	7/13/2009	10/19/2011



Distribution of fanwort (*Cabomba caroliniana*) in RI

river segments listed first alphabetically; then lakes listed by city or town

<u>Town</u>	<u>Waterbody Name</u>	<u>First documented</u>	<u>Last Surveyed</u>
<u>Lincoln</u>			
48	Olney Pond	9/6/2007	8/3/2023
49	Spectacle Pond (Lincoln)	6/23/2022	7/14/2022
<u>North Kingstown</u>			
50	Belleville Ponds	9/10/2007	7/20/2023
51	Carr Pond (N. Kingstown)	9/28/2009	6/16/2016
52	Potowomut Pond	8/29/2008	8/17/2021
53	Secret Lake	7/3/2009	6/18/2010
54	Silver Spring Lake	9/10/2007	9/21/2023
<u>North Providence</u>			
55	Geneva Pond	7/17/2009	5/27/2010
56	Wenscott Reservoir (Twin Rivers)	6/10/2009	8/3/2022
<u>North Smithfield</u>			
57	Slatersville Reservoir	10/9/2009	8/23/2023
58	Tarkiln Pond	6/25/2009	8/30/2018
<u>Providence</u>			
59	Roger Williams Park Ponds	9/14/2009	7/21/2023
<u>Scituate</u>			
60	Peeptoad Pond	8/23/2012	8/23/2012
61	Regulating Reservoir	6/17/2010	7/11/2012
62			



Distribution of fanwort (*Cabomba caroliniana*) in RI

river segments listed first alphabetically; then lakes listed by city or town

<u>Town</u>	<u>Waterbody Name</u>	<u>First documented</u>	<u>Last Surveyed</u>
	Scituate Reservoir	8/2/2011	8/3/2011
<u>Smithfield</u>			
63	Georgiaville Pond	9/15/2007	6/28/2019
64	Hawkins Pond	6/20/2011	9/14/2018
65	Lower Sprague Reservoir	8/13/2020	8/3/2021
66	Woonasquatucket Reservoir (Stump Pond)	9/26/2007	7/31/2018
<u>South Kingstown</u>			
67	Barber Pond	8/29/2007	7/27/2017
68	Glen Rock Reservoir	9/6/2018	9/6/2018
69	Hundred Acre Pond	9/3/2009	9/3/2009
70	Saugatucket Pond	6/22/2016	6/22/2016
71	Thirty Acre Pond	9/3/2009	9/3/2009
72	Worden Pond	10/2/2009	10/2/2009
<u>Warwick</u>			
73	Gorton Pond	6/15/2010	8/22/2023
74	Three Ponds	9/4/2008	9/4/2008
75	Three Ponds (northern basin)	10/4/2017	10/4/2017
<u>West Greenwich</u>			
76	Reynolds Pond	9/5/2007	7/20/2023
77	Tarbox Pond	9/5/2007	5/22/2021



Distribution of fanwort (*Cabomba caroliniana*) in RI

river segments listed first alphabetically; then lakes listed by city or town

<u>Town</u>	<u>Waterbody Name</u>	<u>First documented</u>	<u>Last Surveyed</u>
<u>West Warwick</u>			
78	Juniper Drive Pond	9/24/2020	9/24/2020
<u>Westerly</u>			
79	Chapman Pond	6/23/2016	8/10/2022
<u>Woonsocket</u>			
80	Sylvestre Pond	10/4/2012	7/13/2023



Distribution Map of Water Chestnut (*Trapa natans*) in Rhode Island

Updated 11/06/2023



Statewide Totals:
19 Lakes
4 River Segments



Note: Documentation based on surveys performed 2007-2023 by Rhode Island Department of Environmental Management (RIDEM) Office of Water Resources. AIS refers only to those plant species present in the floating and submergent plant communities. More information available online: <http://www.dem.ri.gov/programs/water/quality/surface-water/aisplant.php>



Distribution of water chestnut (*Trapa natans*) in RI

river segments listed first alphabetically; then lakes listed by city or town

<u>Town</u>	<u>Waterbody Name</u>	<u>First documented</u>	<u>Last Surveyed</u>
<u>RIVERS</u>			
1	Blackstone River (Seg A)	8/11/2020	6/20/2023
2	Blackstone River (Seg B)	6/14/2022	6/14/2022
3	Ten Mile River & Tribs (Seg A)	6/5/2021	8/1/2023
4	Ten Mile River & Tribs (Seg B)	6/30/2021	6/30/2021
<u>Central Falls</u>			
5	Valley Falls Pond	8/9/2017	9/16/2022
<u>Cumberland</u>			
6	Carls Pond	9/1/2020	8/17/2023
7	Rawson Pond	7/29/2022	7/29/2022
<u>East Providence</u>			
8	Central Pond	9/30/2009	8/13/2020
9	Lakeside Cemetery Pond	7/3/2020	7/3/2020
10	Omega Pond	6/10/2021	7/5/2023
11	Turner Reservoir	7/30/2009	7/15/2023
<u>Foster</u>			
12	Green Acres Recreation Pond	9/19/2023	9/19/2023
13	Porters Pond	10/1/2008	10/1/2008
<u>Hopkinton</u>			
14	Solitude Springs Farm Ponds	6/11/2016	7/10/2017
<u>Lincoln</u>			
15			



Distribution of water chestnut (*Trapa natans*) in RI

river segments listed first alphabetically; then lakes listed by city or town

<u>Town</u>	<u>Waterbody Name</u>	<u>First documented</u>	<u>Last Surveyed</u>
<u>Lincoln</u>			
15	Barney Pond	6/12/2019	7/26/2023
16	Olney Pond	6/27/2019	8/3/2023
17	Spectacle Pond (Lincoln)	7/29/2021	7/14/2022
<u>North Kingstown</u>			
18	Belleville Ponds	7/25/2008	7/20/2023
<u>Pawtucket</u>			
19	Slater Park Pond	8/1/2022	8/1/2022
<u>Providence</u>			
20	Roger Williams Park Ponds	7/27/2018	7/21/2023
<u>West Greenwich</u>			
21	Reynolds Pond	8/25/2021	7/20/2023
<u>Westerly</u>			
22	Chapman Pond	7/10/2009	8/10/2022
<u>Woonsocket</u>			
23	Sylvestre Pond	10/4/2012	7/13/2023

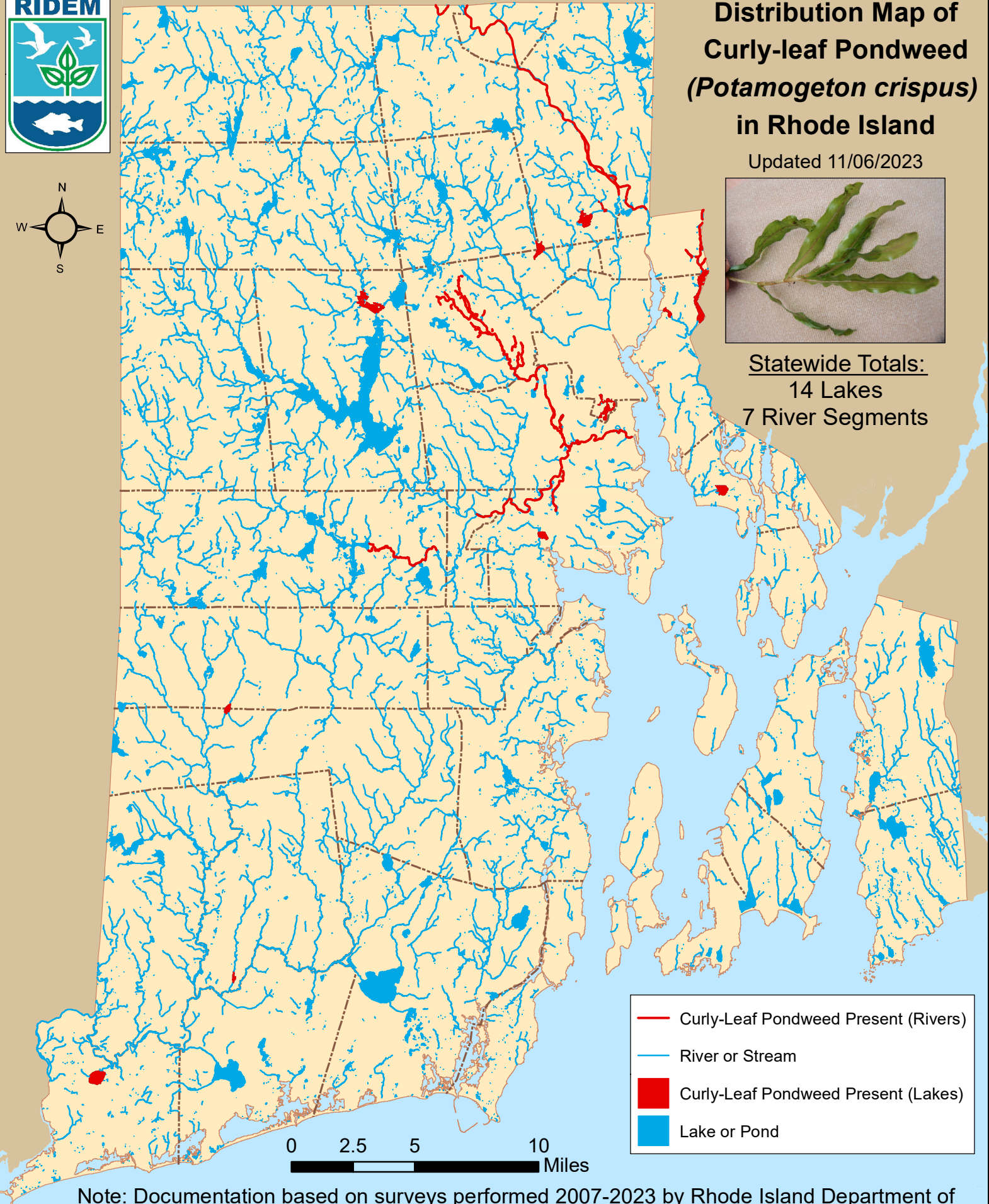


Distribution Map of Curly-leaf Pondweed (*Potamogeton crispus*) in Rhode Island

Updated 11/06/2023



Statewide Totals:
14 Lakes
7 River Segments



- Curly-Leaf Pondweed Present (Rivers)
- River or Stream
- Curly-Leaf Pondweed Present (Lakes)
- Lake or Pond

Note: Documentation based on surveys performed 2007-2023 by Rhode Island Department of Environmental Management (RIDEM) Office of Water Resources. AIS refers only to those plant species present in the floating and submergent plant communities. More information available online: <http://www.dem.ri.gov/programs/water/quality/surface-water/aisplant.php>



Distribution of curly-leaf pondweed (*P. crispus*) in RI

river segments listed first alphabetically; then lakes listed by city or town

<u>Town</u>	<u>Waterbody Name</u>	<u>First documented</u>	<u>Last Surveyed</u>
<u>RIVERS</u>			
1	Blackstone River (Seg A)	8/13/2010	6/20/2023
2	Pawtuxet River (Main Stem)	8/11/2009	9/9/2020
3	Pawtuxet River (South Branch Seg A)	7/30/2012	6/27/2018
4	Pocasset River & Tribs (Seg A)	7/1/2019	7/1/2019
5	Pocasset River & Tribs (Seg B)	9/5/2018	9/5/2018
6	Ten Mile River & Tribs (Seg A)	7/3/2009	8/1/2023
7	Three Pond Brook	6/19/2012	6/19/2012
<u>Barrington</u>			
8	Brickyard Pond	9/10/2007	9/14/2020
<u>Cranston</u>			
9	Blackamore Pond	7/25/2017	7/25/2017
<u>East Providence</u>			
10	Central Pond	9/30/2009	8/13/2020
11	Omega Pond	6/10/2021	7/5/2023
12	Turner Reservoir	6/9/2010	7/15/2023
<u>Exeter</u>			
13	Breakheart Pond	8/19/2020	8/19/2020
<u>Lincoln</u>			
14	Barney Pond	9/30/2009	7/26/2023
15	Olney Pond	5/27/2010	8/3/2023
<u>North Providence</u>			
16	Wenscott Reservoir (Twin Rivers)	6/10/2009	8/3/2022



Distribution of curly-leaf pondweed (*P. crispus*) in RI

river segments listed first alphabetically; then lakes listed by city or town

<u>Town</u>	<u>Waterbody Name</u>	<u>First documented</u>	<u>Last Surveyed</u>
<u>Providence</u>			
17	Roger Williams Park Ponds	4/26/2010	7/21/2023
<u>Richmond</u>			
18	Meadowbrook Pond (Sandy Pond)	8/21/2017	8/21/2017
<u>Scituate</u>			
19	Regulating Reservoir	7/11/2012	7/11/2012
<u>Warwick</u>			
20	Gorton Pond	6/5/2015	8/22/2023
<u>Westerly</u>			
21	Chapman Pond	7/9/2012	8/10/2022

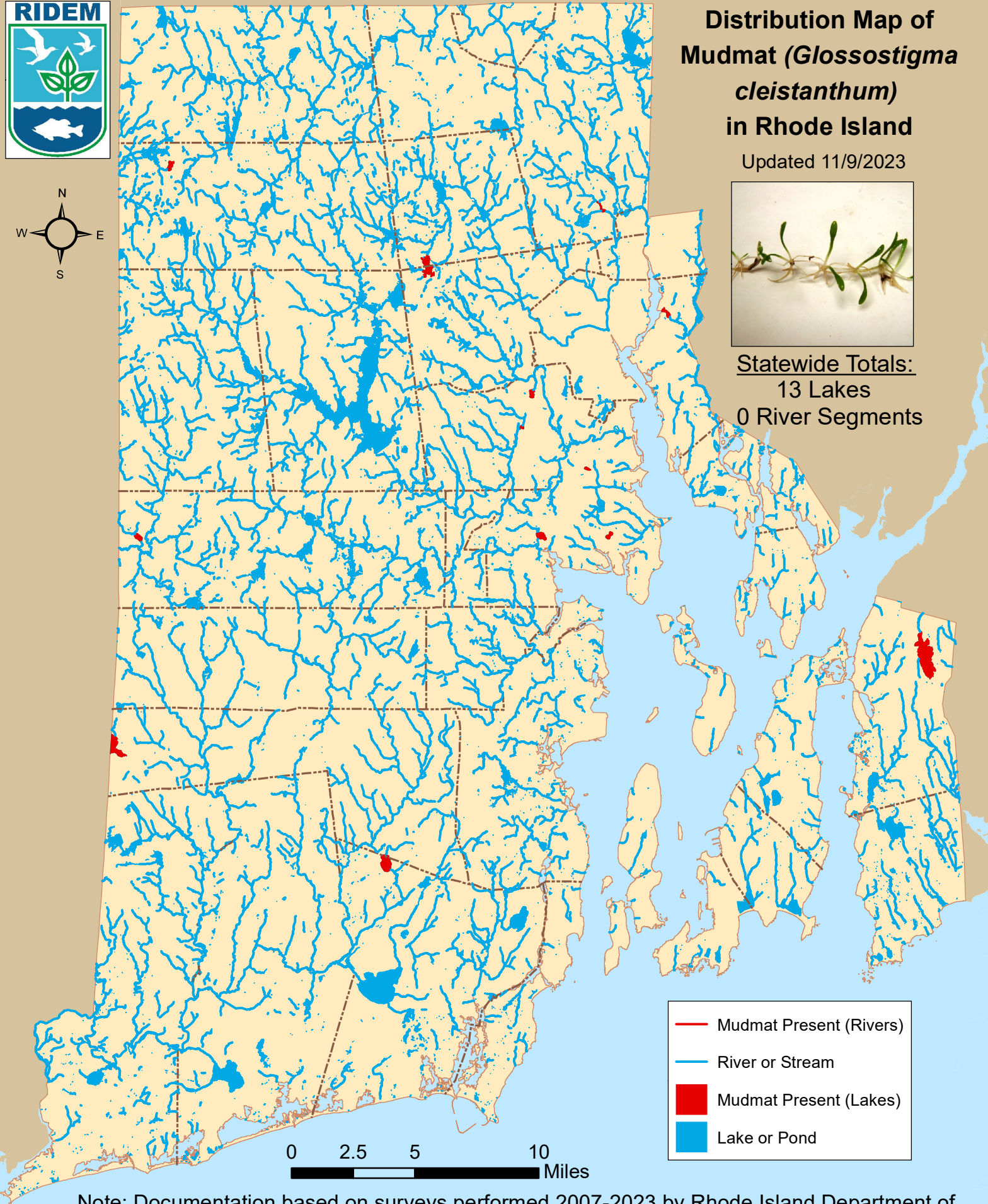


Distribution Map of Mudmat (*Glossostigma cleistanthum*) in Rhode Island

Updated 11/9/2023



Statewide Totals:
13 Lakes
0 River Segments



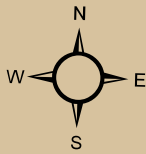
Note: Documentation based on surveys performed 2007-2023 by Rhode Island Department of Environmental Management (RIDEM) Office of Water Resources. AIS refers only to those plant species present in the floating and submergent plant communities. More information available online: <http://www.dem.ri.gov/programs/water/quality/surface-water/aisplant.php>



Distribution of mudmat (*G. cleistanthum*) in RI

river segments listed first alphabetically; then lakes listed by city or town

<u>Town</u>	<u>Waterbody Name</u>	<u>First documented</u>	<u>Last Surveyed</u>
<u>Coventry</u>			
1	Carbuncle Pond	10/11/2011	8/31/2020
<u>Cranston</u>			
2	Meshanticut Pond	9/11/2020	9/20/2023
3	Randall Pond	10/13/2011	7/19/2017
<u>East Providence</u>			
4	Omega Pond	8/12/2022	7/5/2023
<u>Exeter</u>			
5	Beach Pond	6/19/2019	6/19/2019
<u>Glocester</u>			
6	Lake Washington	8/19/2010	6/10/2019
<u>Johnston, Smithfield</u>			
7	Slack Reservoir	10/19/2011	10/19/2011
<u>Lincoln</u>			
8	Barney Pond	6/12/2019	7/26/2023
<u>South Kingstown</u>			
9	Yawgoo Pond	7/1/2010	7/1/2010
<u>Tiverton</u>			
10	Stafford Pond	9/9/2010	9/9/2010
<u>Warwick</u>			
11	Gorton Pond	6/15/2010	8/22/2023
12	Sand Pond (N. of Airport)	6/22/2011	9/2/2023
13	Sandy Pond (S. of Airport) (Little Pond)	7/23/2010	8/7/2018

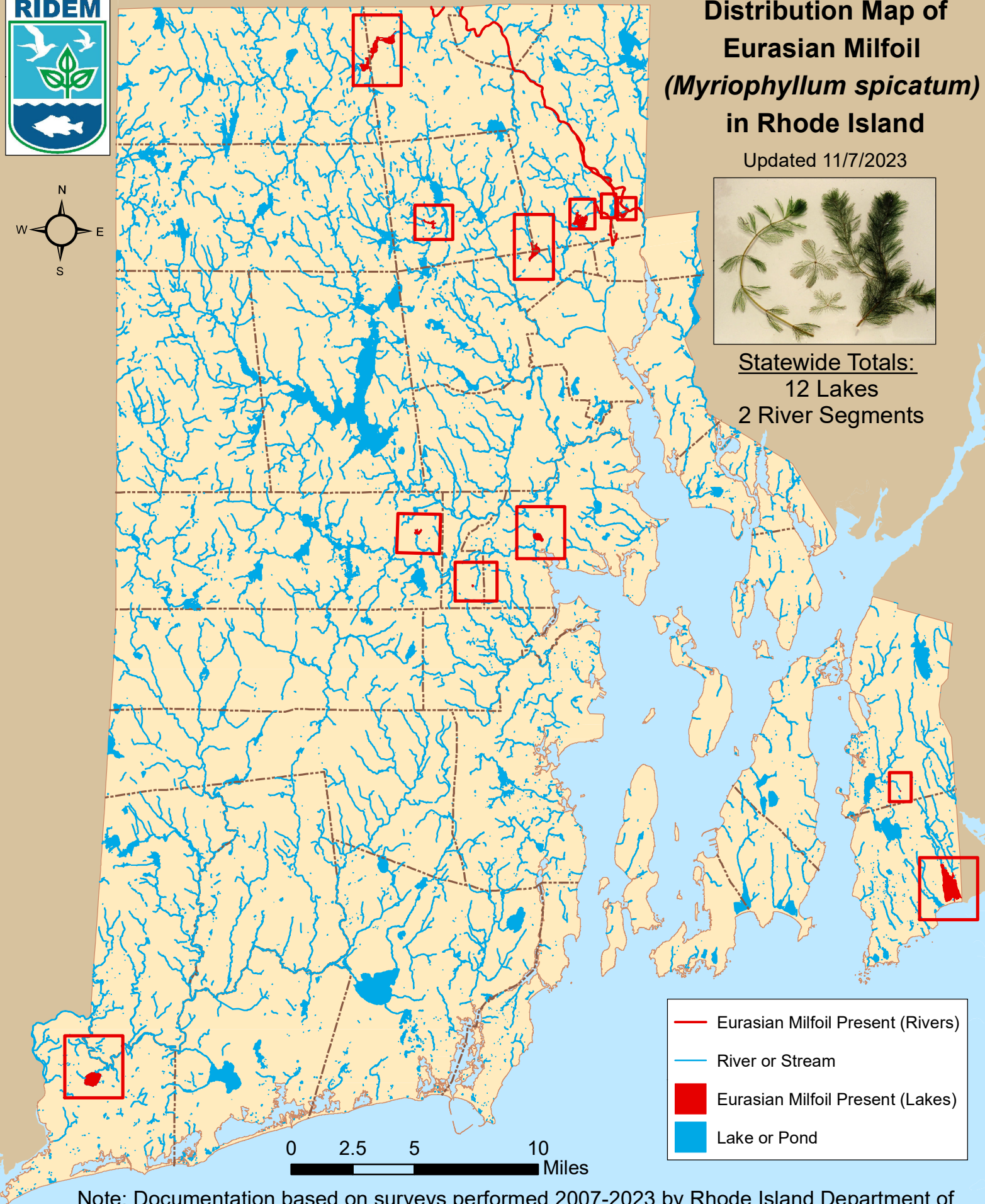


Distribution Map of Eurasian Milfoil (*Myriophyllum spicatum*) in Rhode Island

Updated 11/7/2023



Statewide Totals:
12 Lakes
2 River Segments



Note: Documentation based on surveys performed 2007-2023 by Rhode Island Department of Environmental Management (RIDEM) Office of Water Resources. AIS refers only to those plant species present in the floating and submergent plant communities. More information available online: <http://www.dem.ri.gov/programs/water/quality/surface-water/aisplant.php>



Distribution of Eurasian milfoil (*M. spicatum*) in RI

river segments listed first alphabetically; then lakes listed by city or town

<u>Town</u>	<u>Waterbody Name</u>	<u>First documented</u>	<u>Last Surveyed</u>
<u>RIVERS</u>			
1	Blackstone River (Seg A)	7/22/2009	6/20/2023
2	Moshassuck River & Tribs (Seg B)	8/17/2009	8/17/2009
<u>Central Falls</u>			
3	Valley Falls Pond	8/9/2017	9/16/2022
<u>Coventry</u>			
4	Upper Dam Pond	8/28/2020	8/28/2020
<u>Lincoln</u>			
5	Barney Pond	9/30/2009	7/26/2023
6	Olney Pond	9/6/2007	8/3/2023
<u>Little Compton</u>			
7	Quicksand Pond	9/11/2020	9/11/2020
<u>North Providence</u>			
8	Wenscott Reservoir (Twin Rivers)	7/28/2016	8/3/2022
<u>North Smithfield</u>			
9	Slatersville Reservoir	6/17/2012	8/23/2023
<u>Smithfield</u>			
10	Lower Sprague Reservoir	8/3/2021	8/3/2021
<u>Tiverton</u>			
11	Eight Rod Farm Pond	9/7/2012	9/25/2020
<u>Warwick</u>			
12	Gorton Pond	6/15/2010	8/22/2023
<u>West Warwick</u>			
13	Juniper Drive Pond	8/15/2012	9/24/2020
<u>Westerly</u>			



Distribution of Eurasian milfoil (*M. spicatum*) in RI

river segments listed first alphabetically; then lakes listed by city or town

<u>Town</u>	<u>Waterbody Name</u>	<u>First documented</u>	<u>Last Surveyed</u>
14	Chapman Pond	9/5/2007	8/10/2022



Distribution Map of Spiny Naiad (*Najas minor*) in Rhode Island

Updated 11/7/2023



Statewide Totals:
11 Lakes
0 River Segments



Note: Documentation based on surveys performed 2007-2023 by Rhode Island Department of Environmental Management (RIDEM) Office of Water Resources. AIS refers only to those plant species present in the floating and submergent plant communities. More information available online: <http://www.dem.ri.gov/programs/water/quality/surface-water/aisplant.php>



Distribution of spiny naiad (*Najas minor*) in RI

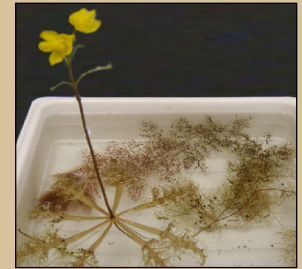
river segments listed first alphabetically; then lakes listed by city or town

<u>Town</u>	<u>Waterbody Name</u>	<u>First documented</u>	<u>Last Surveyed</u>
<u>Coventry</u>			
1	Tiogue Lake	8/10/2016	9/9/2020
2	Upper Dam Pond	7/23/2010	8/28/2020
<u>Cranston</u>			
3	Meshanticut Pond	8/20/2021	9/20/2023
<u>Glocester</u>			
4	Waterman Reservoir	6/21/2011	7/27/2016
<u>Johnston, Smithfield</u>			
5	Slack Reservoir	7/13/2009	10/19/2011
<u>Lincoln</u>			
6	Olney Pond	7/14/2011	8/3/2023
<u>North Providence</u>			
7	Wenscott Reservoir (Twin Rivers)	7/1/2014	8/3/2022
<u>North Smithfield</u>			
8	Slatersville Reservoir	6/17/2012	8/23/2023
<u>Smithfield</u>			
9	Georgiaville Pond	6/21/2011	6/28/2019
10	Lower Sprague Reservoir	8/3/2021	8/3/2021
<u>Westerly</u>			
11	Chapman Pond	8/10/2010	8/10/2022

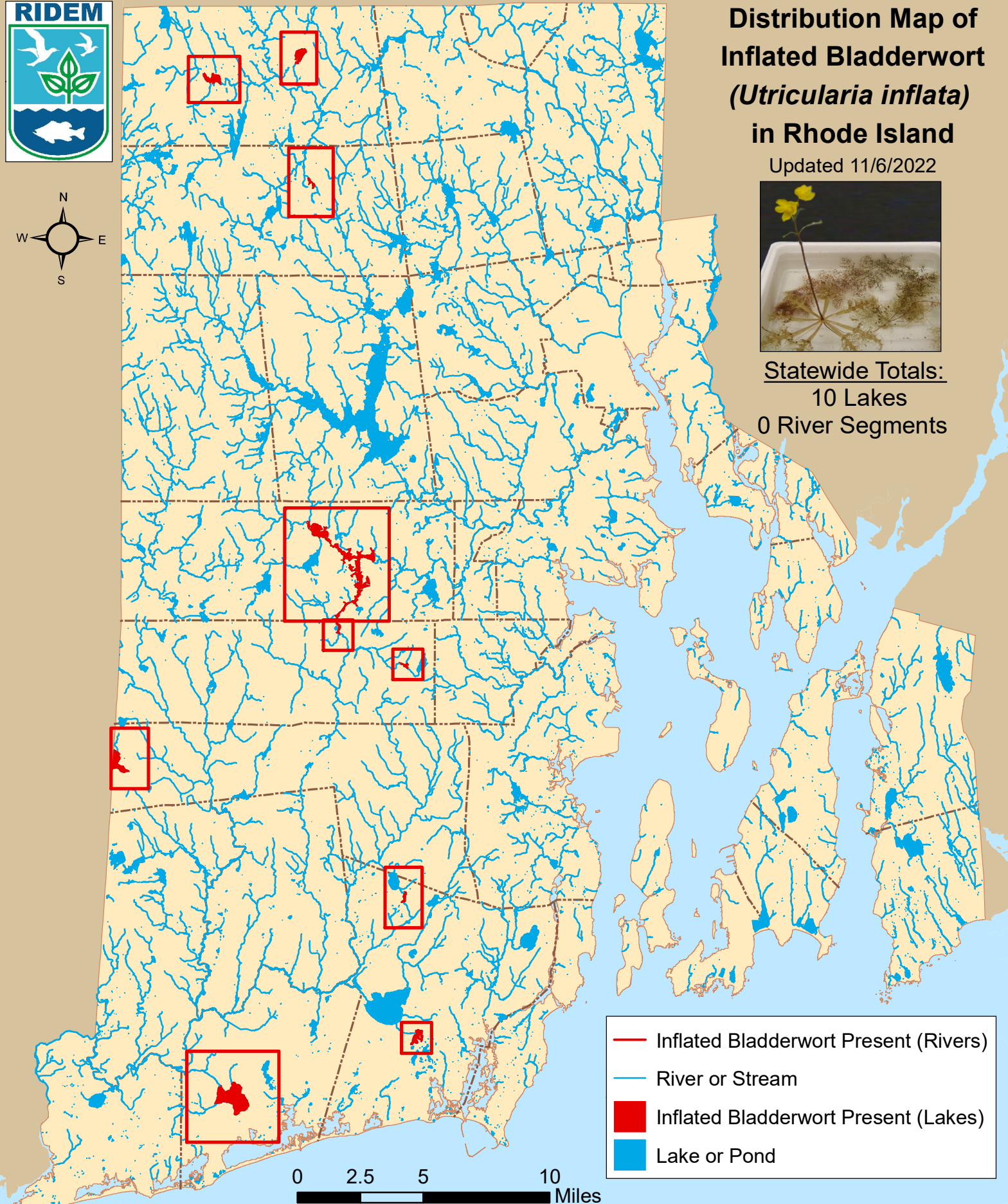


Distribution Map of Inflated Bladderwort (*Utricularia inflata*) in Rhode Island

Updated 11/6/2022



Statewide Totals:
10 Lakes
0 River Segments



Note: Documentation based on surveys performed 2007-2022 by Rhode Island Department of Environmental Management (RIDEM) Office of Water Resources. AIS refers only to those plant species present in the floating and submergent plant communities. More information available online: <http://www.dem.ri.gov/programs/water/quality/surface-water/aisplant.php>



Distribution of inflated bladderwort (*U. inflata*) in RI

river segments listed first alphabetically; then lakes listed by city or town

<u>Town</u>	<u>Waterbody Name</u>	<u>First documented</u>	<u>Last Surveyed</u>
<u>Burrillville</u>			
1	Spring Lake (Herring Pond)	6/3/2010	8/24/2023
2	Wilson Reservoir	6/15/2012	8/26/2020
<u>Charlestown</u>			
3	Watchaug Pond	8/31/2012	6/2/2016
<u>Coventry</u>			
4	Flat River Reservoir (Johnson Pond)	7/18/2012	10/13/2023
<u>Exeter</u>			
5	Beach Pond	6/19/2019	6/19/2019
<u>Glocester</u>			
6	Spring Grove Pond	6/1/2016	6/8/2018
<u>South Kingstown</u>			
7	Barber Pond	6/2/2016	7/27/2017
8	Tucker Pond	6/2/2021	8/31/2023
<u>West Greenwich</u>			
9	Reynolds Pond	8/25/2021	7/20/2023
10	Tarbox Pond	5/22/2021	5/22/2021

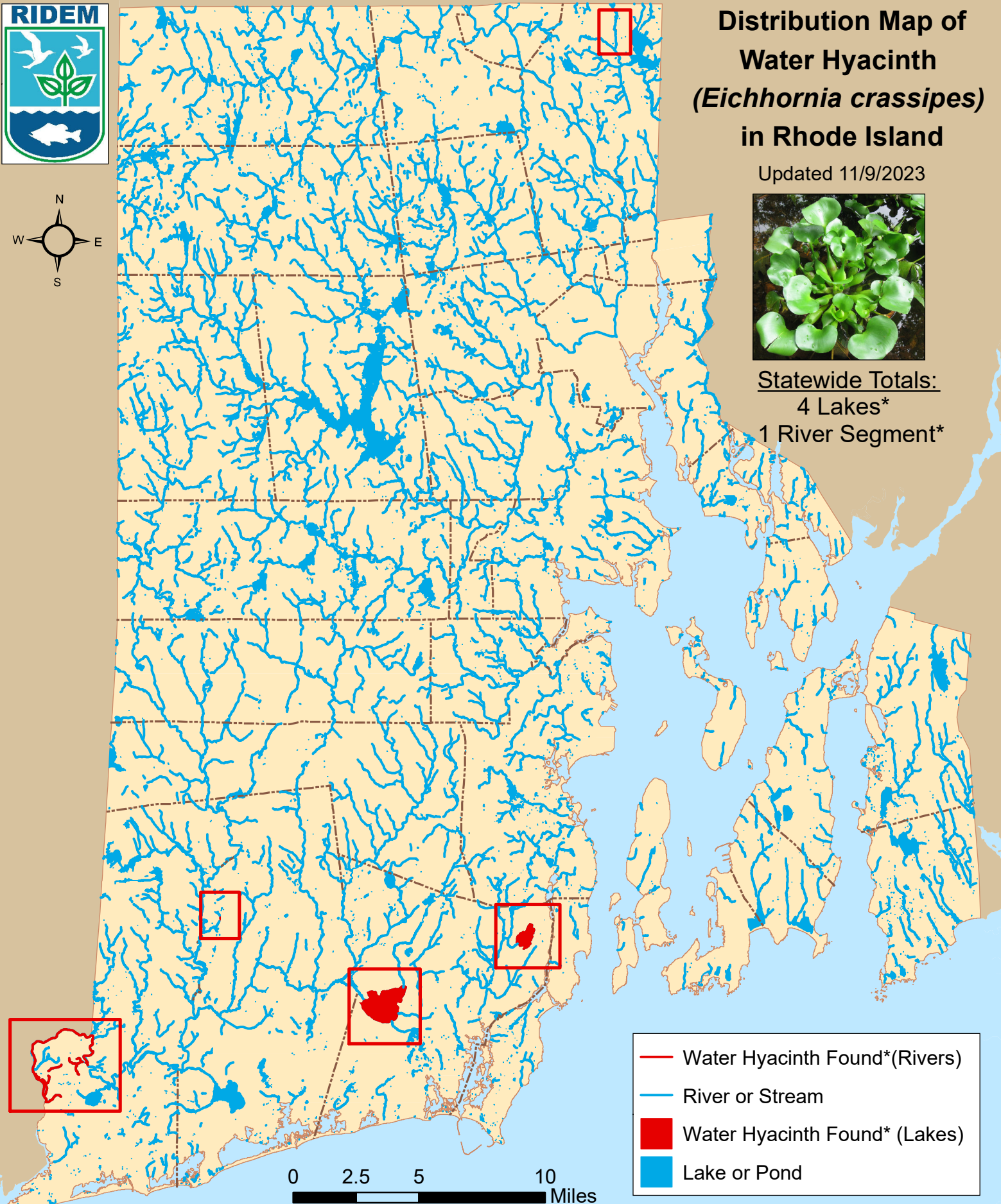


Distribution Map of Water Hyacinth (*Eichhornia crassipes*) in Rhode Island

Updated 11/9/2023



Statewide Totals:
4 Lakes*
1 River Segment*



- Water Hyacinth Found*(Rivers)
- River or Stream
- Water Hyacinth Found* (Lakes)
- Lake or Pond

Note: Documentation based on surveys performed 2007-2023 by Rhode Island Department of Environmental Management (RIDEM) Office of Water Resources.

*Water hyacinth was observed only once during a RIDEM survey, and has not yet shown to overwinter in RI. More information available online: <http://www.dem.ri.gov/programs/water/quality/surface-water/aisplant.php>



Distribution of water hyacinth (*E. crassipes*) in RI

river segments listed first alphabetically; then lakes listed by city or town

<u>Town</u>	<u>Waterbody Name</u>	<u>First documented</u>	<u>Last Surveyed</u>
<u>RIVERS</u>			
1	Pawcatuck River & Tribs	9/6/2012	9/8/2020
<u>Cumberland</u>			
2	Sylvn's Pond (Sylvn's Brook Pond)	8/7/2014	10/4/2017
<u>Richmond</u>			
3	Carolina Trout Pond	10/7/2008	8/28/2017
<u>South Kingstown</u>			
4	Indian Lake	7/29/2009	8/9/2023
5	Worden Pond	9/4/2009	10/2/2009

Note: water hyacinth was found only on date first documented, and has not been found to overwinter yet in Rhode Island

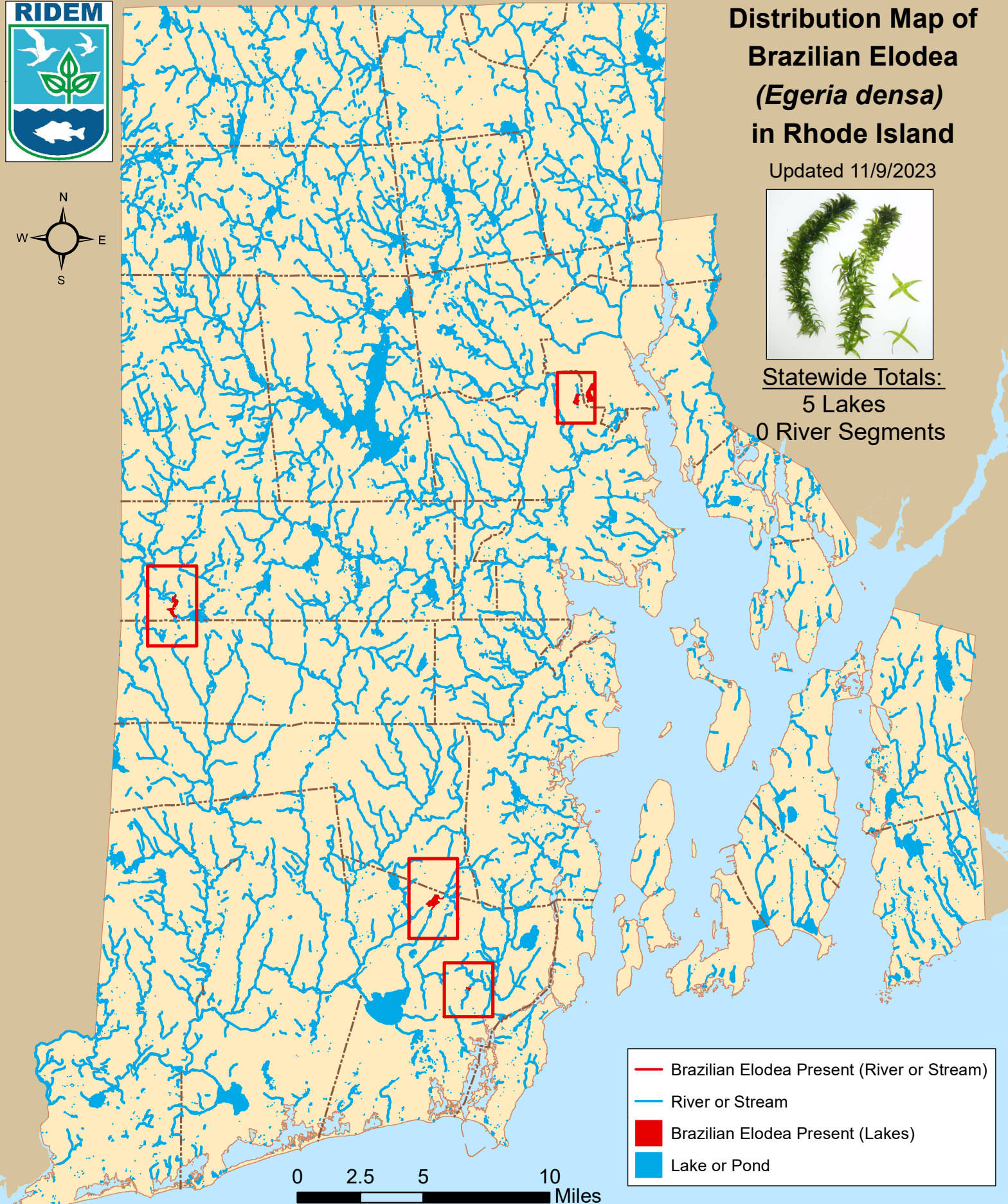


Distribution Map of Brazilian Elodea (*Egeria densa*) in Rhode Island

Updated 11/9/2023



Statewide Totals:
5 Lakes
0 River Segments



Note: Documentation based on surveys performed 2007-2023 by Rhode Island Department of Environmental Management (RIDEM) Office of Water Resources. AIS refers only to those plant species present in the floating and submergent plant communities. More information available online: <http://www.dem.ri.gov/programs/water/quality/surface-water/aisplant.php>



Distribution of Brazilian elodea (*Egeria densa*) in RI

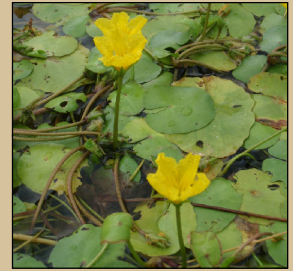
river segments listed first alphabetically; then lakes listed by city or town

<u>Town</u>	<u>Waterbody Name</u>	<u>First documented</u>	<u>Last Surveyed</u>
<u>Coventry</u>			
1	Arnold Pond	9/2/2009	9/2/2009
<u>Cranston</u>			
2	Spectacle Pond	9/26/2012	9/26/2012
<u>Providence</u>			
3	Mashapaug Pond	8/8/2019	8/8/2019
<u>South Kingstown</u>			
4	Hundred Acre Pond	9/3/2009	9/3/2009
5	Peace Dale Reservoir	7/6/2017	8/10/2017

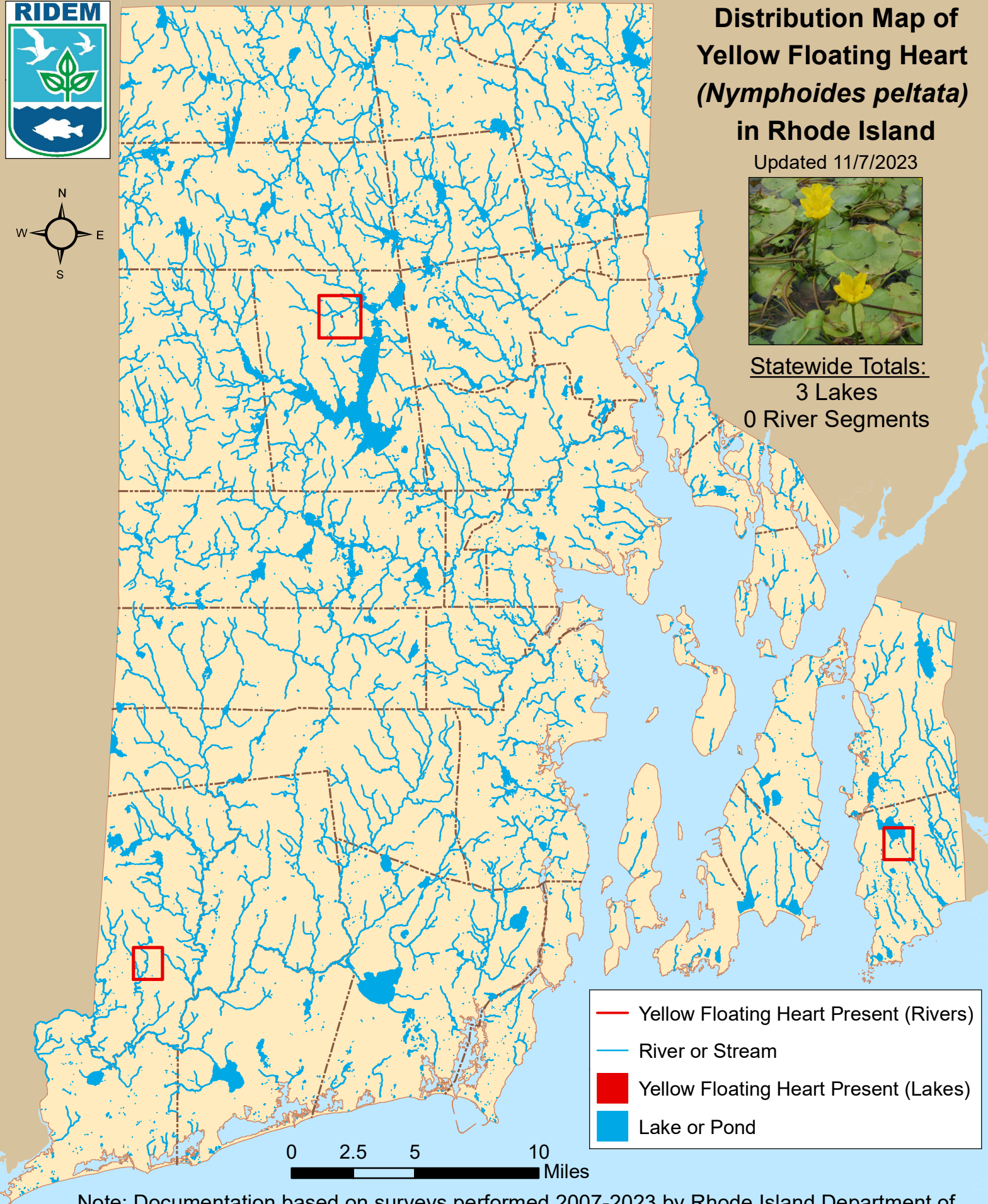


Distribution Map of Yellow Floating Heart (*Nymphoides peltata*) in Rhode Island

Updated 11/7/2023



Statewide Totals:
3 Lakes
0 River Segments



Note: Documentation based on surveys performed 2007-2023 by Rhode Island Department of Environmental Management (RIDEM) Office of Water Resources. AIS refers only to those plant species present in the floating and submergent plant communities. More information available online: <http://www.dem.ri.gov/programs/water/quality/surface-water/aisplant.php>



Distribution of yellow floating heart (*N. peltata*) in RI

river segments listed first alphabetically; then lakes listed by city or town

<u>Town</u>	<u>Waterbody Name</u>	<u>First documented</u>	<u>Last Surveyed</u>
<u>Hopkinton</u>			
1	Solitude Springs Farm Ponds	7/10/2017	7/10/2017
<u>Little Compton</u>			
2	Peckham Rd. Pond	7/23/2010	7/30/2021
<u>Scituate</u>			
3	Dexter Road Pond	7/14/2010	8/4/2022

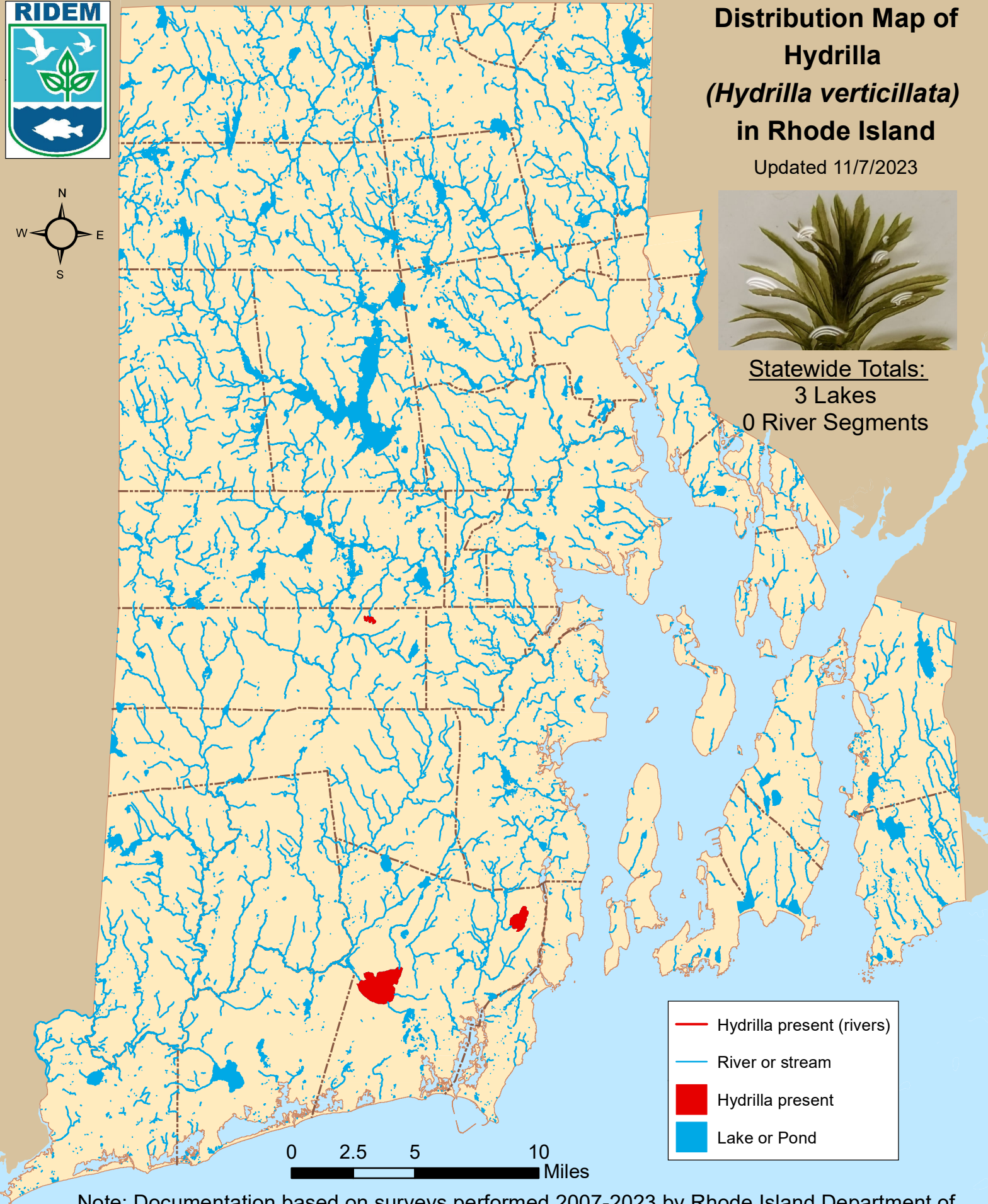


Distribution Map of Hydrilla (*Hydrilla verticillata*) in Rhode Island

Updated 11/7/2023



Statewide Totals:
3 Lakes
0 River Segments



Note: Documentation based on surveys performed 2007-2023 by Rhode Island Department of Environmental Management (RIDEM) Office of Water Resources. AIS refers only to those plant species present in the floating and submergent plant communities. More information available online: <http://www.dem.ri.gov/programs/water/quality/surface-water/aisplant.php>



Distribution of Hydrilla (*Hydrilla verticillata*) in RI

river segments listed first alphabetically; then lakes listed by city or town

<u>Town</u>	<u>Waterbody Name</u>	<u>First documented</u>	<u>Last Surveyed</u>
-------------	-----------------------	-------------------------	----------------------

South Kingstown

1

Indian Lake

8/9/2023

8/9/2023

2

Worden Pond

11/7/2023

11/7/2023

West Greenwich

3

Mishnock Lake

9/27/2023

9/27/2023

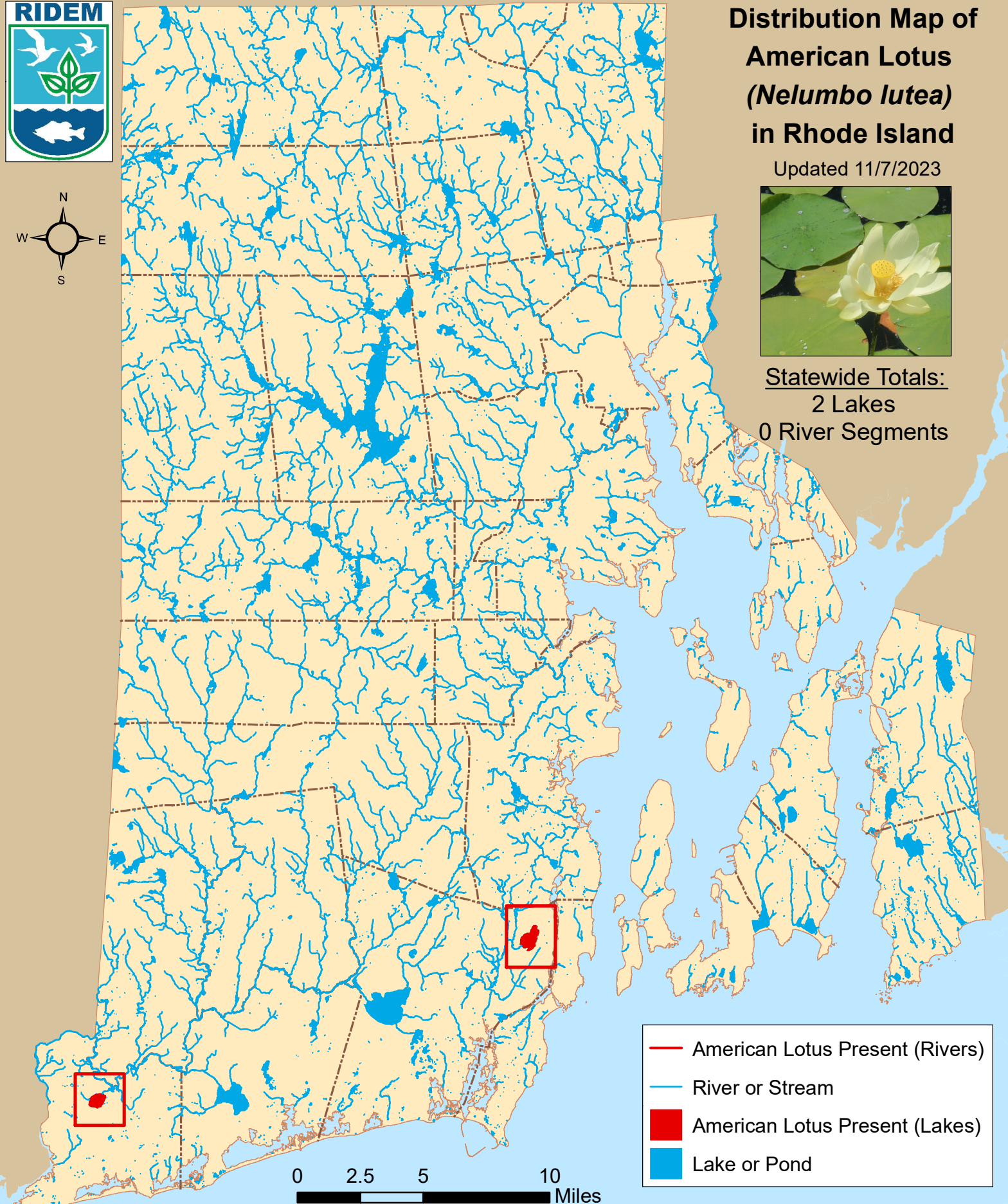


Distribution Map of American Lotus (*Nelumbo lutea*) in Rhode Island

Updated 11/7/2023



Statewide Totals:
2 Lakes
0 River Segments



Note: Documentation based on surveys performed 2007-2023 by Rhode Island Department of Environmental Management (RIDEM) Office of Water Resources. AIS refers only to those plant species present in the floating and submergent plant communities. More information available online: <http://www.dem.ri.gov/programs/water/quality/surface-water/aisplant.php>



Distribution of American lotus (*Nelumbo lutea*) in RI

river segments listed first alphabetically; then lakes listed by city or town

<u>Town</u>	<u>Waterbody Name</u>	<u>First documented</u>	<u>Last Surveyed</u>
<u>South Kingstown</u>			
1	Indian Lake	7/24/2009	8/9/2023
<u>Westerly</u>			
2	Chapman Pond	8/10/2010	8/10/2022

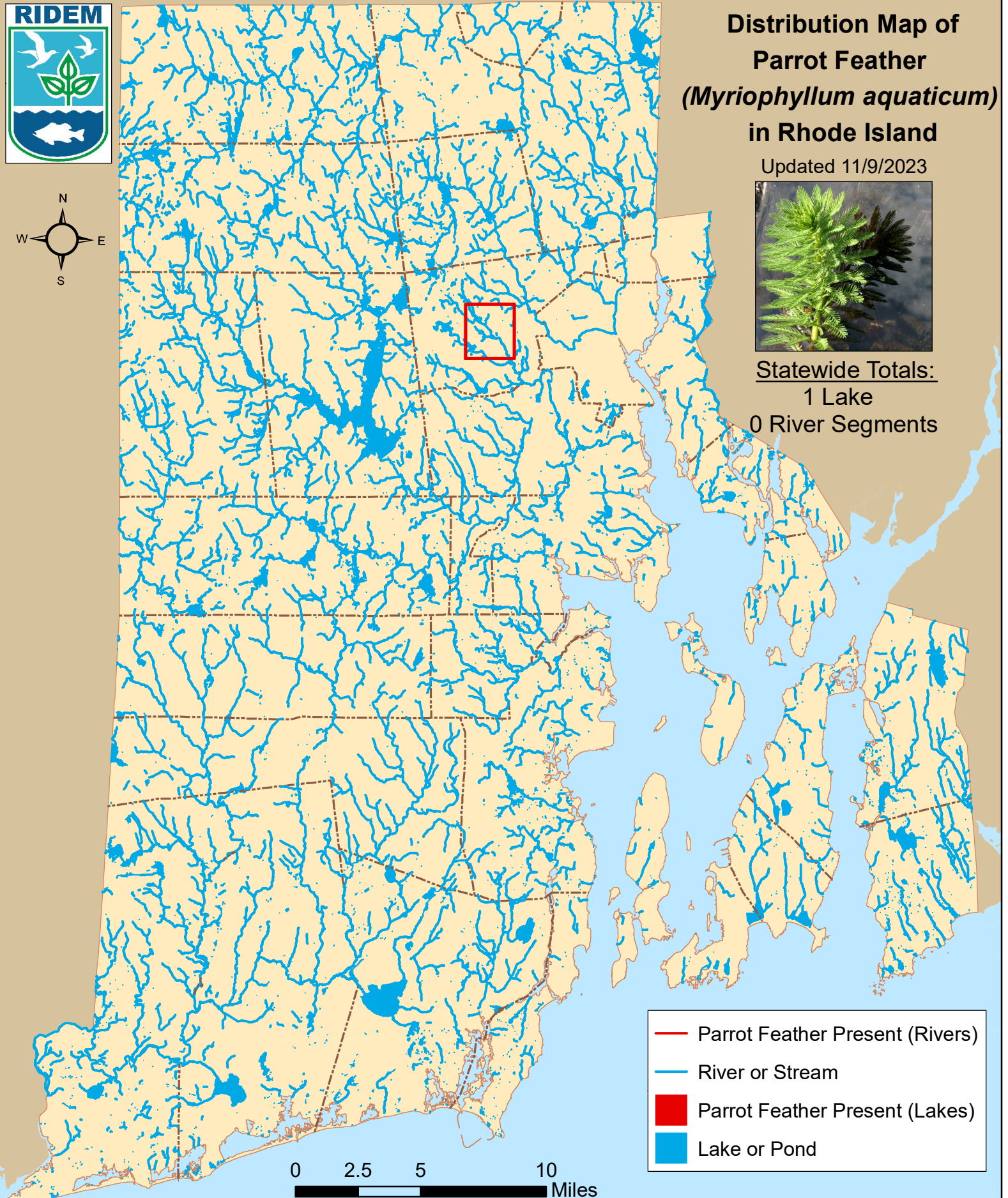


Distribution Map of Parrot Feather (*Myriophyllum aquaticum*) in Rhode Island

Updated 11/9/2023



Statewide Totals:
1 Lake
0 River Segments



Note: Documentation based on surveys performed 2007-2023 by Rhode Island Department of Environmental Management (RIDEM) Office of Water Resources. AIS refers only to those plant species present in the floating and submergent plant communities. More information available online: <http://www.dem.ri.gov/programs/water/quality/surface-water/aisplant.php>



Distribution of parrot feather (*M. aquaticum*) in RI

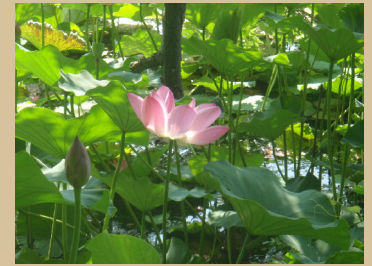
river segments listed first alphabetically; then lakes listed by city or town

<u>Town</u>	<u>Waterbody Name</u>	<u>First documented</u>	<u>Last Surveyed</u>
<u>Johnston</u>			
1	Pocasset Pond (Johnson Mem Park Pond)	8/20/2009	6/26/2019

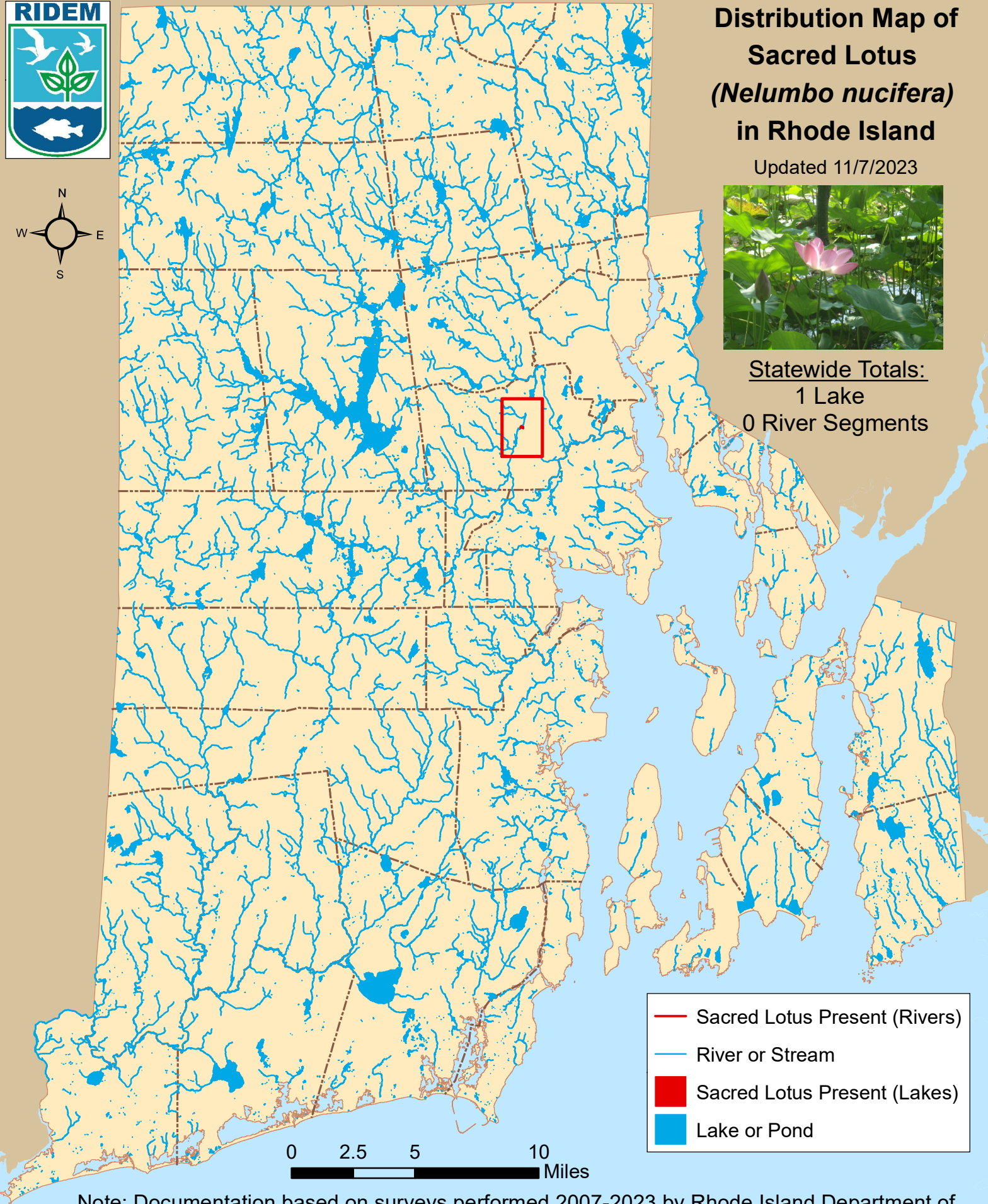


Distribution Map of Sacred Lotus (*Nelumbo nucifera*) in Rhode Island

Updated 11/7/2023



Statewide Totals:
1 Lake
0 River Segments



Note: Documentation based on surveys performed 2007-2023 by Rhode Island Department of Environmental Management (RIDEM) Office of Water Resources. AIS refers only to those plant species present in the floating and submergent plant communities. More information available online: <http://www.dem.ri.gov/programs/water/quality/surface-water/aisplant.php>



Distribution of sacred lotus (*Nelumbo nucifera*) in RI

river segments listed first alphabetically; then lakes listed by city or town

<u>Town</u>	<u>Waterbody Name</u>	<u>First documented</u>	<u>Last Surveyed</u>
-------------	-----------------------	-------------------------	----------------------

Cranston

1

Meshanticut Pond

7/27/2018

9/20/2023

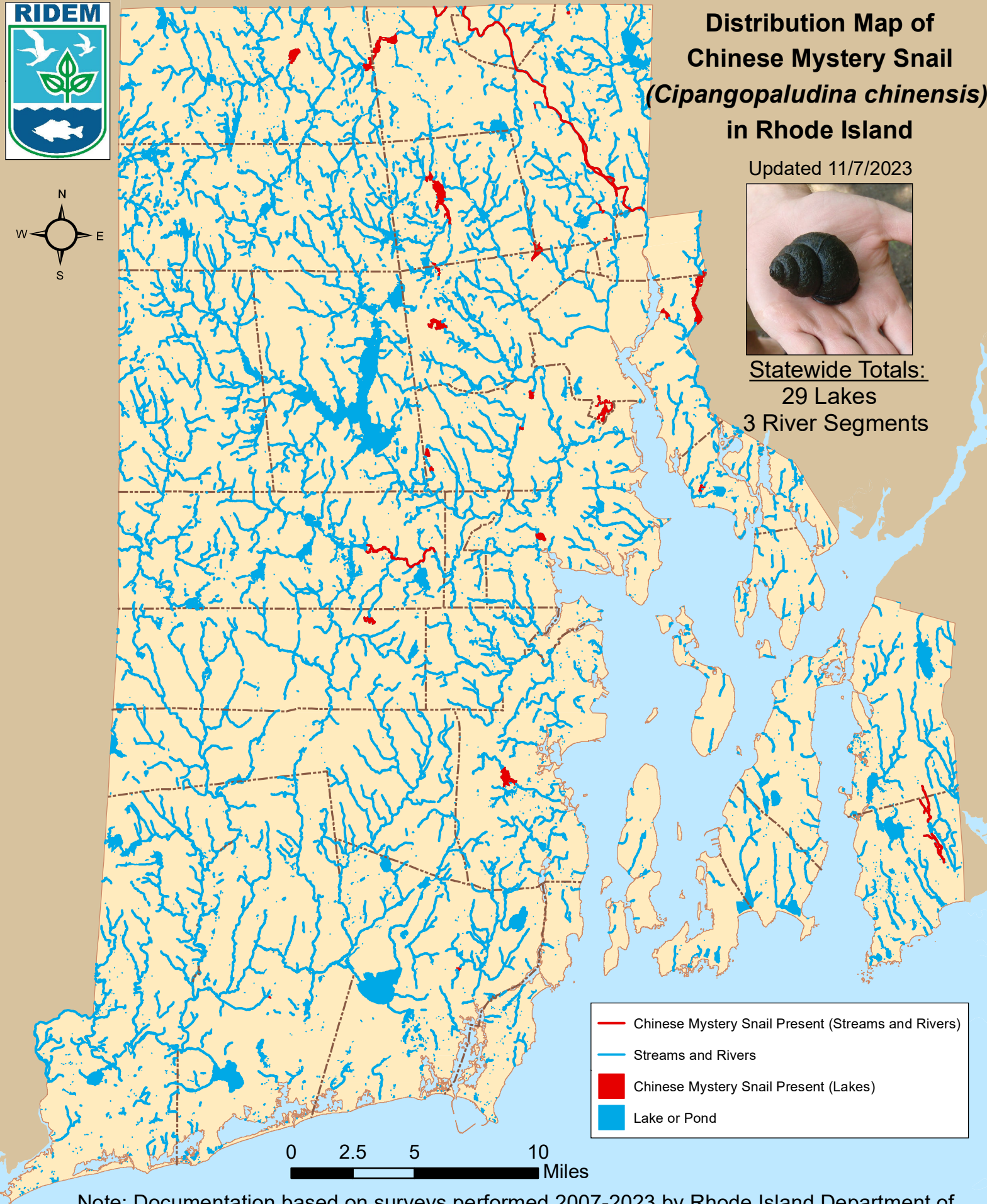


Distribution Map of Chinese Mystery Snail (*Cipangopaludina chinensis*) in Rhode Island

Updated 11/7/2023



Statewide Totals:
29 Lakes
3 River Segments



Note: Documentation based on surveys performed 2007-2023 by Rhode Island Department of Environmental Management (RIDEM) Office of Water Resources. AIS refers only to those plant species present in the floating and submergent plant communities. More information available online: <http://www.dem.ri.gov/programs/water/quality/surface-water/aisplant.php>



Distribution of mystery snail (*C. chinensis*) in RI

river segments listed first alphabetically; then lakes listed by city or town

<u>Town</u>	<u>Waterbody Name</u>	<u>First documented</u>	<u>Last Surveyed</u>
<u>RIVERS</u>			
1	Blackstone River (Seg A)	8/2/2017	6/20/2023
2	Cold (Cole) Brook & Tribs	8/14/2019	8/14/2019
3	Pawtuxet River (South Branch Seg A)	6/27/2018	6/27/2018
<u>Barrington</u>			
4	Echo Lake	9/17/2020	9/17/2020
<u>Burrillville</u>			
5	Spring Lake (Herring Pond)	6/8/2018	8/24/2023
<u>Charlestown</u>			
6	Saw Mill Pond	7/28/2020	7/28/2020
<u>Cranston</u>			
7	J.L. Curran Reservoir (Fiskeville Reservoir)	6/15/2010	8/19/2022
8	Meshanticut Pond	7/24/2019	9/20/2023
9	Randall Pond	7/19/2017	7/19/2017
<u>Cumberland</u>			
10	Carls Pond	9/29/2015	8/17/2023
11	Sylvn's Pond (Sylvn's Brook Pond)	10/4/2017	10/4/2017
<u>East Providence</u>			
12	Central Pond	6/17/2016	8/13/2020
13	Omega Pond	6/10/2021	7/5/2023
14	Turner Reservoir	6/16/2022	7/15/2023
<u>Johnston</u>			
15	Oak Swamp Reservoir	7/13/2009	9/27/2012
16	Pocasset Pond (Johnson Mem Park Pond)	7/10/2014	6/26/2019



Distribution of mystery snail (*C. chinensis*) in RI

river segments listed first alphabetically; then lakes listed by city or town

<u>Town</u>	<u>Waterbody Name</u>	<u>First documented</u>	<u>Last Surveyed</u>
<u>Lincoln</u>			
17	Barney Pond	6/12/2019	7/26/2023
18	Butterfly Pond	7/25/2019	7/25/2019
19	Handy Pond (Upper Rochambeau Pond)	9/1/2020	9/1/2020
20	Spectacle Pond (Lincoln)	6/23/2022	7/14/2022
<u>North Kingstown</u>			
21	Belleville Ponds	6/8/2016	7/20/2023
<u>North Providence</u>			
22	Wenscott Reservoir (Twin Rivers)	7/1/2014	8/3/2022
<u>North Smithfield</u>			
23	Slatersville Reservoir	7/20/2017	8/23/2023
<u>Providence</u>			
24	Roger Williams Park Ponds	6/22/2023	7/21/2023
<u>Smithfield</u>			
25	Hawkins Pond	6/23/2015	9/14/2018
26	Woonasquatucket Reservoir (Stump Pond)	7/27/2016	7/31/2018
<u>South Kingstown</u>			
27	Peace Dale Reservoir	8/10/2017	8/10/2017
<u>Warwick</u>			
28	Gorton Pond	6/5/2015	8/22/2023
<u>West Greenwich</u>			
29	Mishnock Lake	9/17/2015	9/27/2023
<u>Woonsocket</u>			
30	Cass Pond	9/1/2020	9/1/2020
31	Sylvestre Pond	5/27/2015	7/13/2023

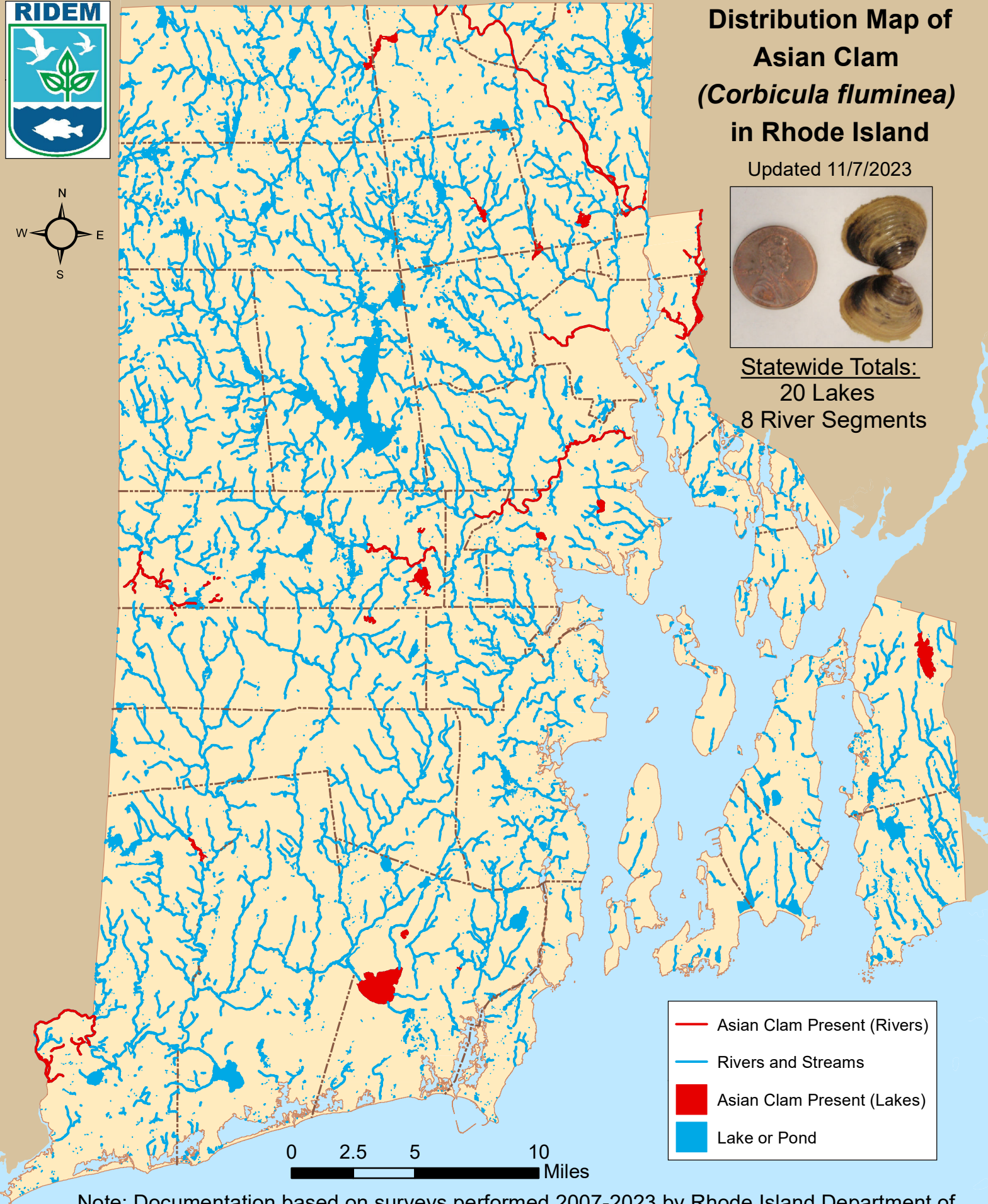


Distribution Map of Asian Clam (*Corbicula fluminea*) in Rhode Island

Updated 11/7/2023



Statewide Totals:
20 Lakes
8 River Segments



- Asian Clam Present (Rivers)
- Rivers and Streams
- Asian Clam Present (Lakes)
- Lake or Pond

Note: Documentation based on surveys performed 2007-2023 by Rhode Island Department of Environmental Management (RIDEM) Office of Water Resources. AIS refers only to those plant species present in the floating and submergent plant communities. More information available online: <http://www.dem.ri.gov/programs/water/quality/surface-water/aisplant.php>



Distribution of Asian clam (*C. fluminea*) in RI

river segments listed first alphabetically; then lakes listed by city or town

<u>Town</u>	<u>Waterbody Name</u>	<u>First documented</u>	<u>Last Surveyed</u>
<u>RIVERS</u>			
1	Blackstone River (Seg A)	8/2/2017	6/20/2023
2	Pawcatuck River & Tribs (Seg E)	8/3/2020	9/8/2020
3	Pawtuxet River (Main Stem)	9/18/2015	9/9/2020
4	Pawtuxet River (South Branch Seg A)	7/30/2012	6/27/2018
5	Roaring Brook & Tribs	8/25/2016	8/25/2016
6	Ten Mile River & Tribs (Seg A)	6/5/2019	8/1/2023
7	Ten Mile River & Tribs (Seg B)	6/5/2019	6/30/2021
8	Woonasquatucket River (Seg D)	6/28/2019	6/28/2019
<u>Central Falls</u>			
9	Valley Falls Pond	9/16/2022	9/16/2022
<u>Coventry</u>			
10	Tiogue Lake	9/5/2007	9/9/2020
11	Upper Dam Pond	7/23/2010	8/28/2020
<u>Cumberland</u>			
12	Carls Pond	6/21/2022	8/17/2023
13	Happy Hollow Pond	8/18/2010	8/18/2010
<u>East Providence</u>			
14	Central Pond	6/9/2010	8/13/2020
15	Omega Pond	6/10/2021	7/5/2023
16	Turner Reservoir	8/12/2020	7/15/2023
<u>Hopkinton</u>			
17			



Distribution of Asian clam (*C. fluminea*) in RI

river segments listed first alphabetically; then lakes listed by city or town

<u>Town</u>	<u>Waterbody Name</u>	<u>First documented</u>	<u>Last Surveyed</u>
	Locustville Pond	9/9/2020	9/14/2023
<u>Lincoln</u>			
18	Olney Pond	6/12/2019	8/3/2023
<u>North Providence</u>			
19	Wenscott Reservoir (Twin Rivers)	7/1/2014	8/3/2022
<u>North Smithfield</u>			
20	Slatersville Reservoir	8/23/2023	8/23/2023
<u>Smithfield</u>			
21	Georgiaville Pond	6/28/2019	6/28/2019
<u>South Kingstown</u>			
22	Larkin Pond	8/21/2019	8/21/2019
23	Peace Dale Reservoir	7/12/2012	8/10/2017
24	Worden Pond	9/21/2007	10/2/2009
<u>Tiverton</u>			
25	Stafford Pond	9/9/2010	9/9/2010
<u>Warwick</u>			
26	Gorton Pond	6/5/2015	8/22/2023
27	Warwick Pond	7/2/2014	7/2/2014
<u>West Greenwich</u>			
28	Mishnock Lake	7/30/2009	9/27/2023