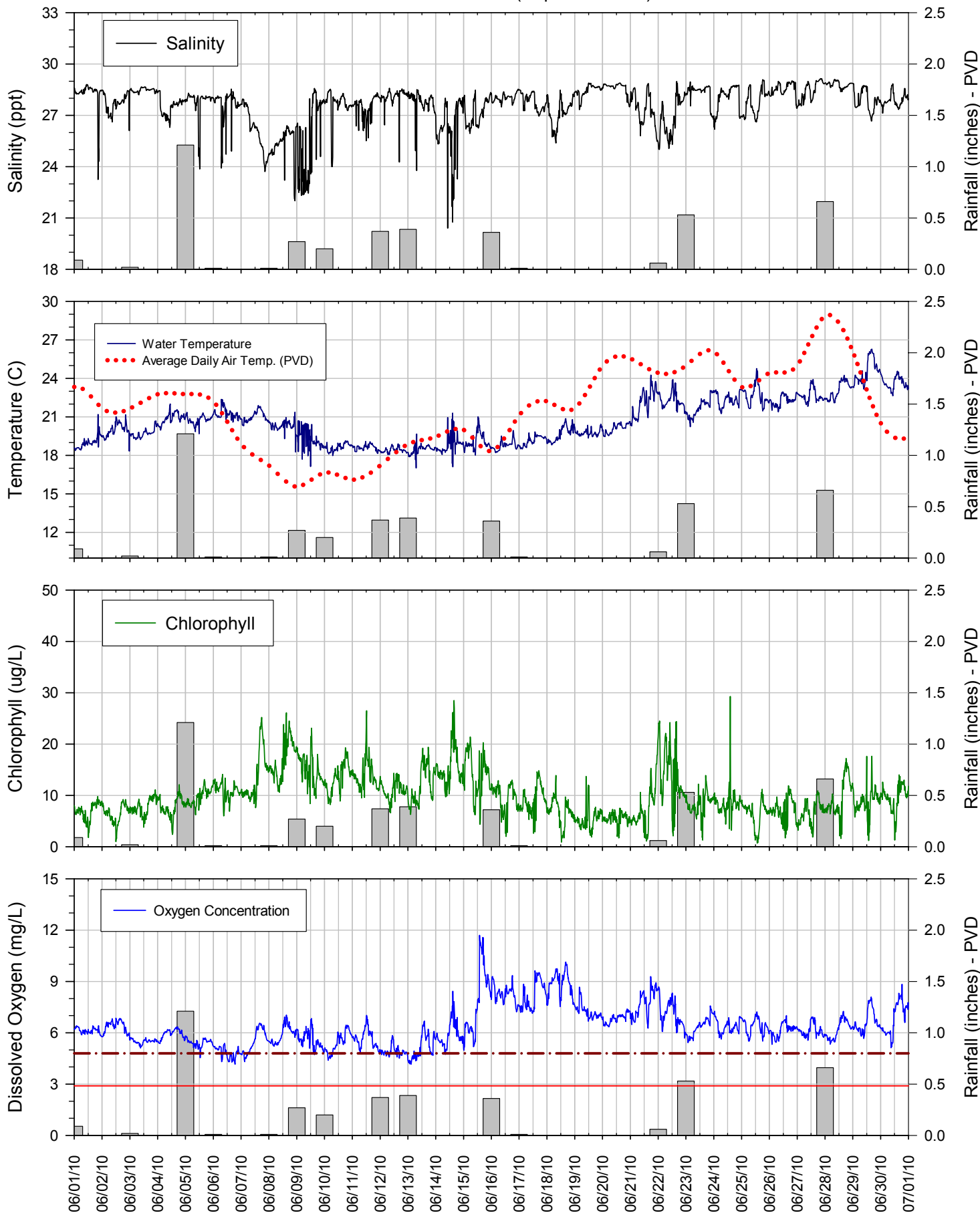
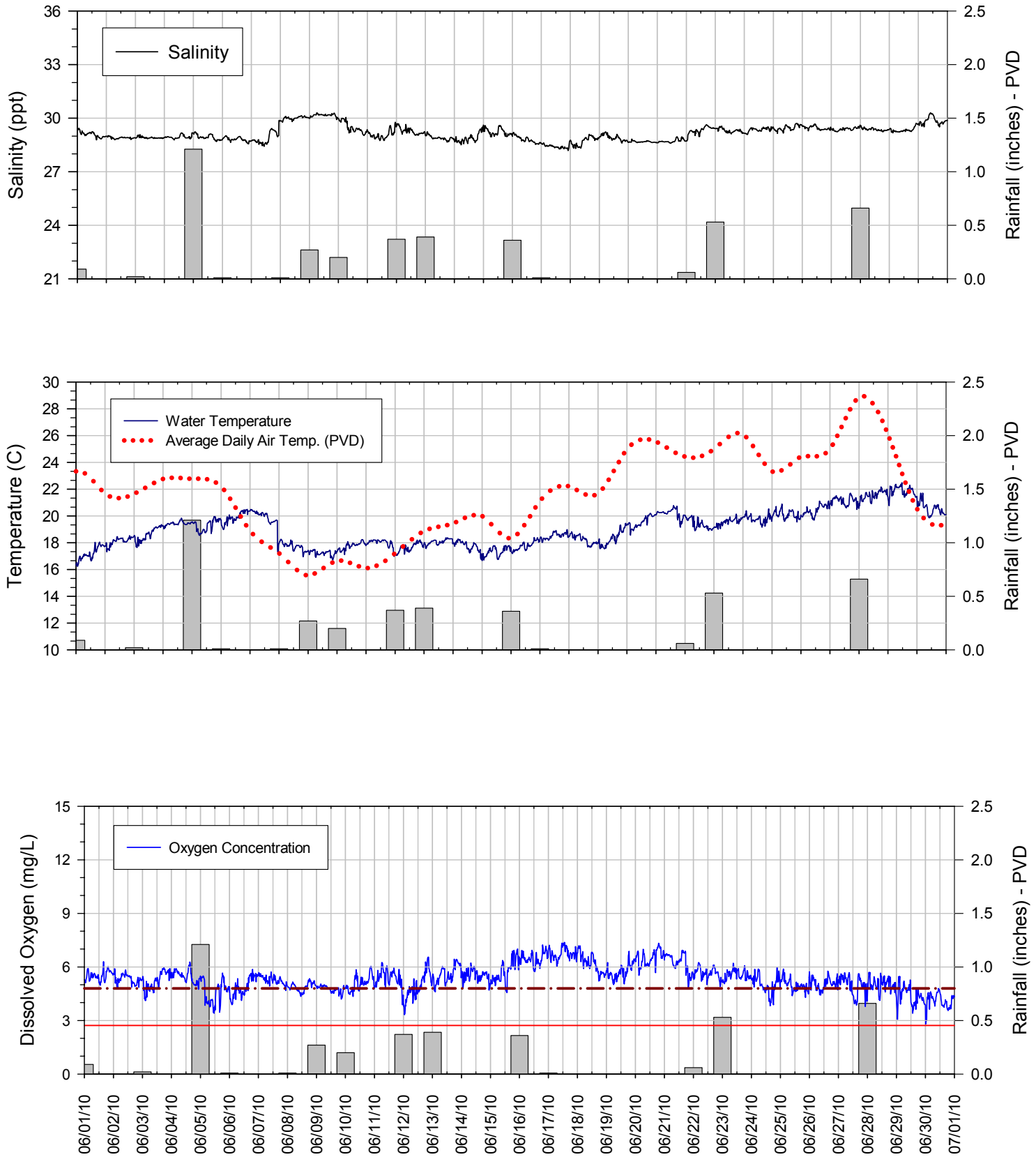


### Surface Sonde at North Prudence (Depth ~1 meter) June 2010



The data displayed on this chart is provisional and is subject to change based on post-season quality control analyses. This station is maintained by RIDEM - Office of Water Resources and URI/GSO.

### Bottom Sonde at North Prudence (Depth ~11 meters) June 2010



The data displayed on this chart is provisional and is subject to change based on post-season quality control analyses. This station is maintained by RIDEM - Office of Water Resources and URI/GSO.