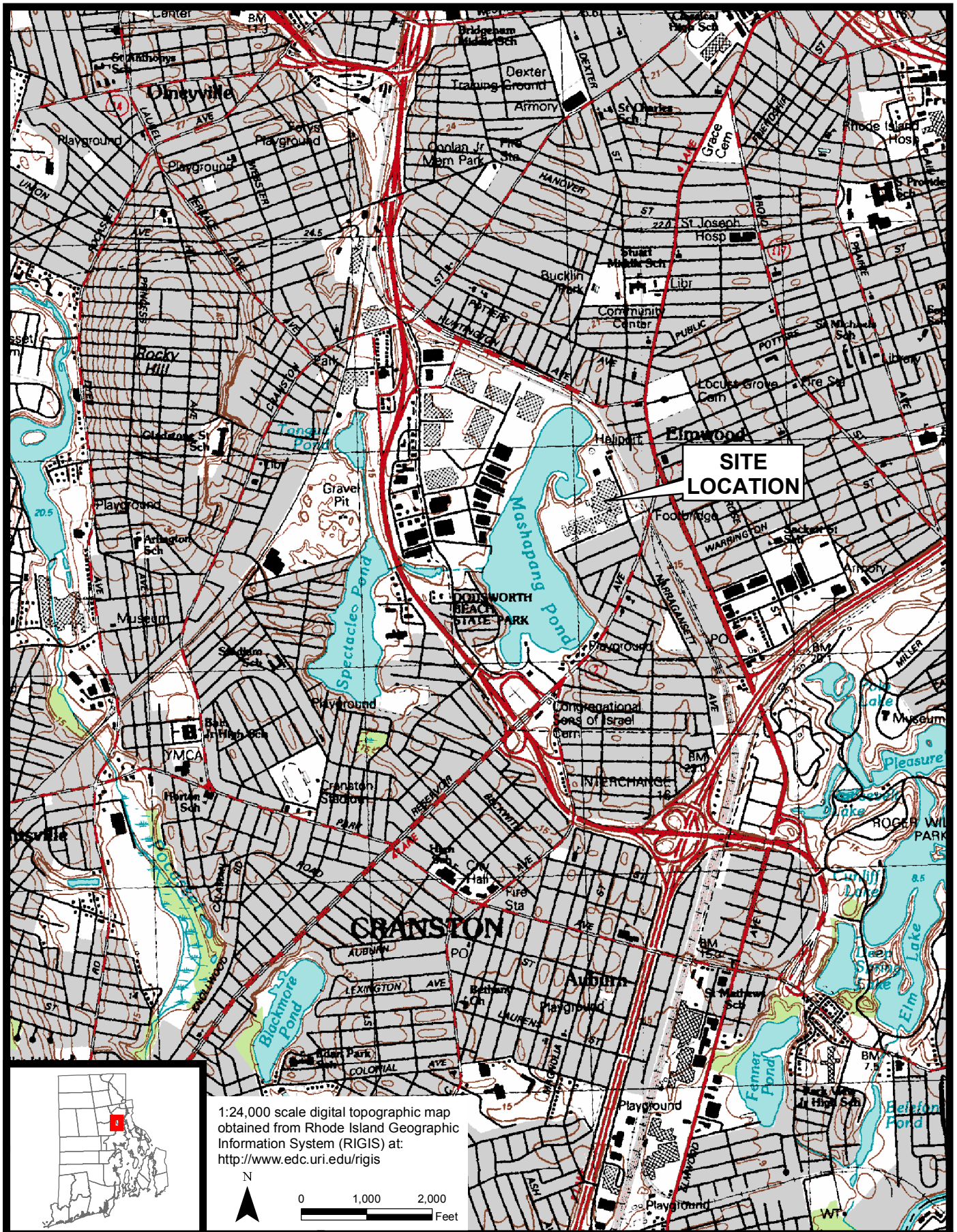


## Figures



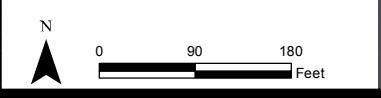
Former Gorham Manufacturing Site  
 333 Adelaide Avenue  
 Providence, RI



Site Location Map

Project 3652-16-0080

Figure 1



**Legend**

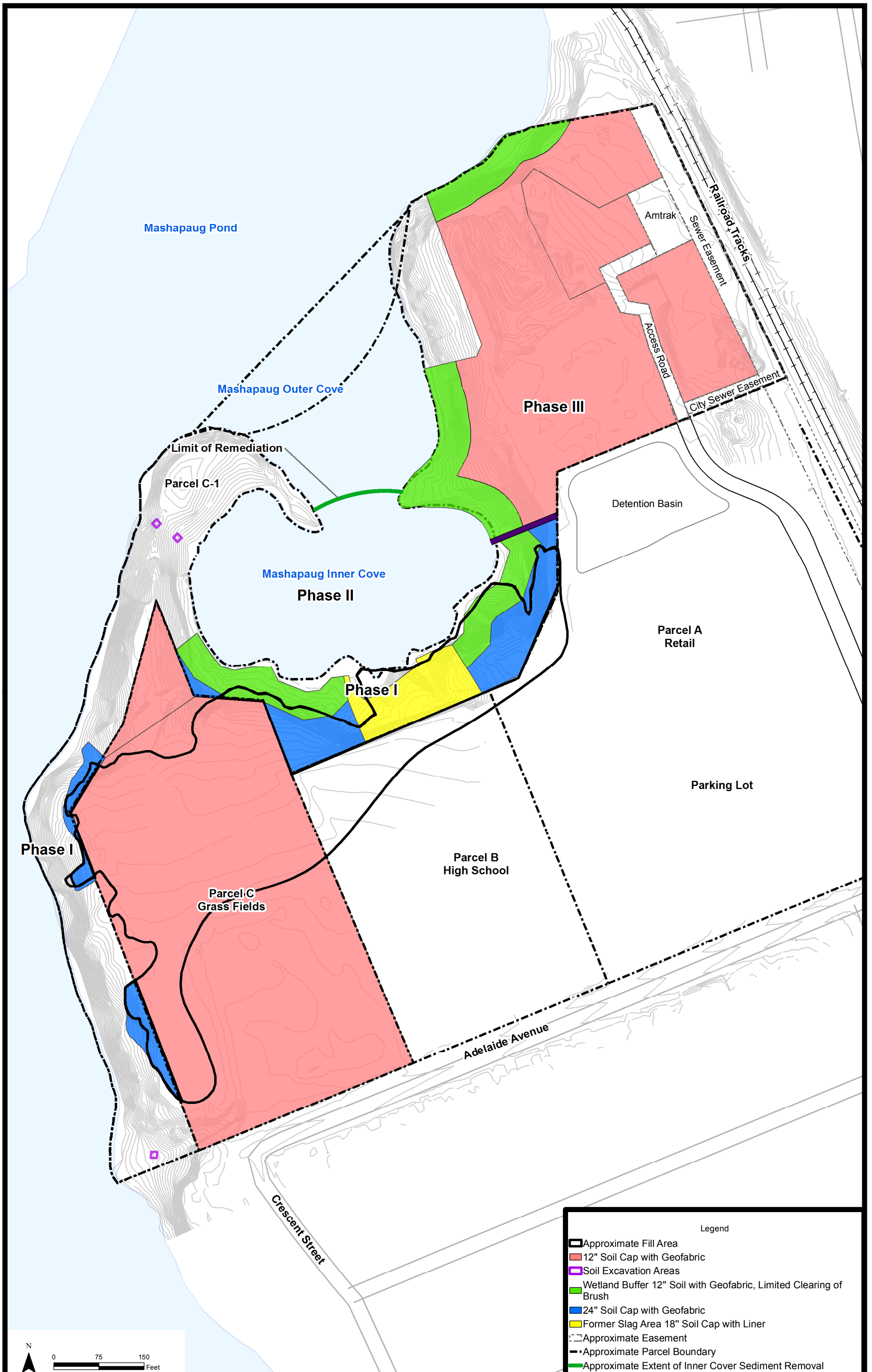
- Approximate Parcel Boundary
- Former Slag Area

Note: 2011 Ortho photo obtained from Rhode Island Geographic Information System (RIGIS)

Former Gorham Manufacturing Site  
 425 Adelaide Avenue  
 Providence, RI



Site Plan  
 Project 3652-16-0080  
 Figure 2



Legend	
	Approximate Fill Area
	12" Soil Cap with Geofabric
	Soil Excavation Areas
	Wetland Buffer 12" Soil with Geofabric, Limited Clearing of Brush
	24" Soil Cap with Geofabric
	Former Slag Area 18" Soil Cap with Liner
	Approximate Easement
	Approximate Parcel Boundary
	Approximate Extent of Inner Cove Sediment Removal

Former Gorham Manufacturing Site  
 333 Adelaide Avenue  
 Providence, RI



Parcel C-1 and Parcel C  
 Phased Response Actions  
 Project 3652-16-0080  
 Figure 3

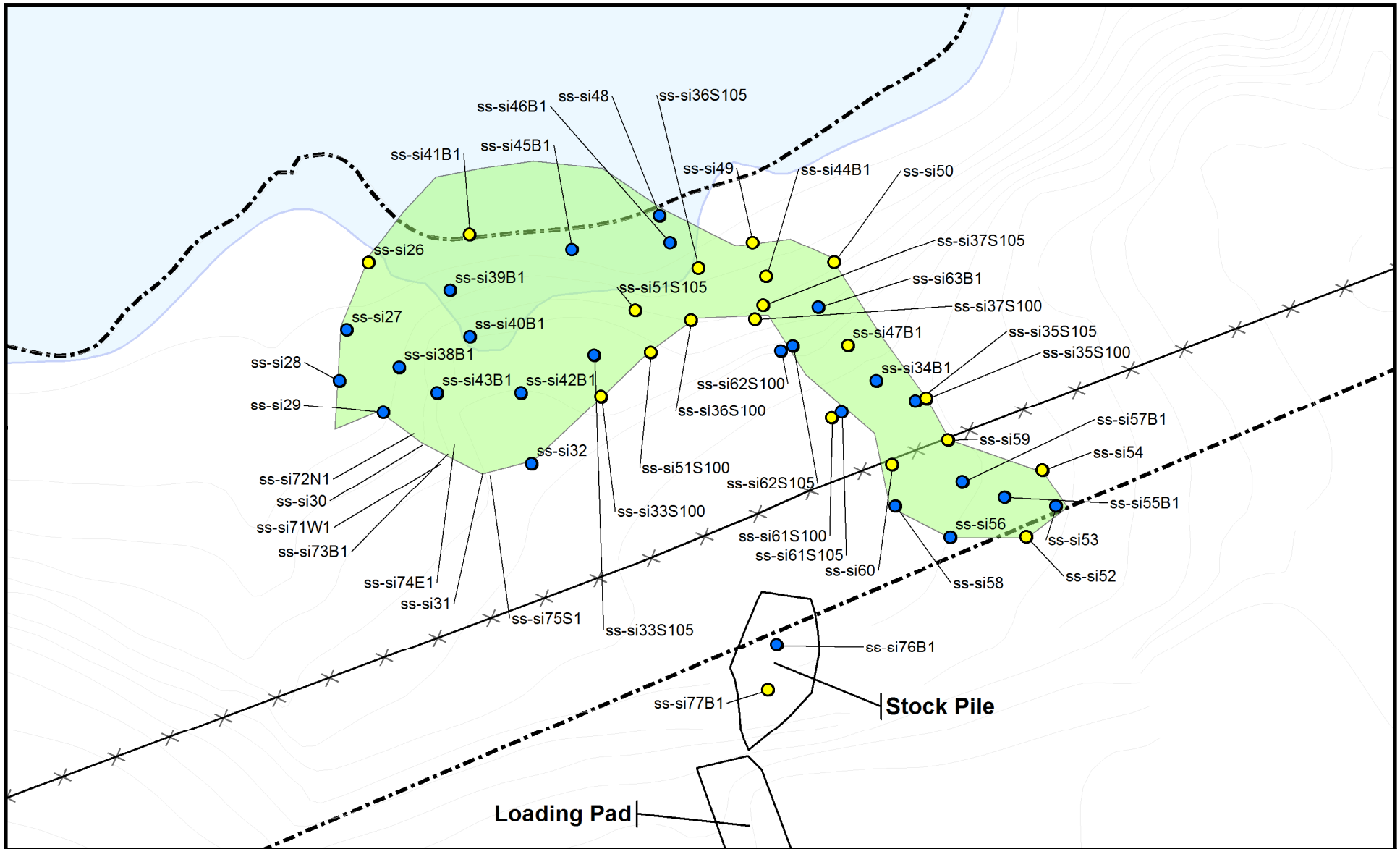


Figure 4  
Slag Removal Confirmatory Soil Sample Locations  
Metal Exceedances

Former Gorham Manufacturing Site  
333 Adelaide Avenue  
Providence, Rhode Island



Prepared by BJR | Checked by PJM

- Legend**
- Confirmatory Sample Locations
  - Metals Exceeding Ind/Com Standard
  - Excavated Area
  - Approximate Site Boundary
  - Elevation
  - City Fence

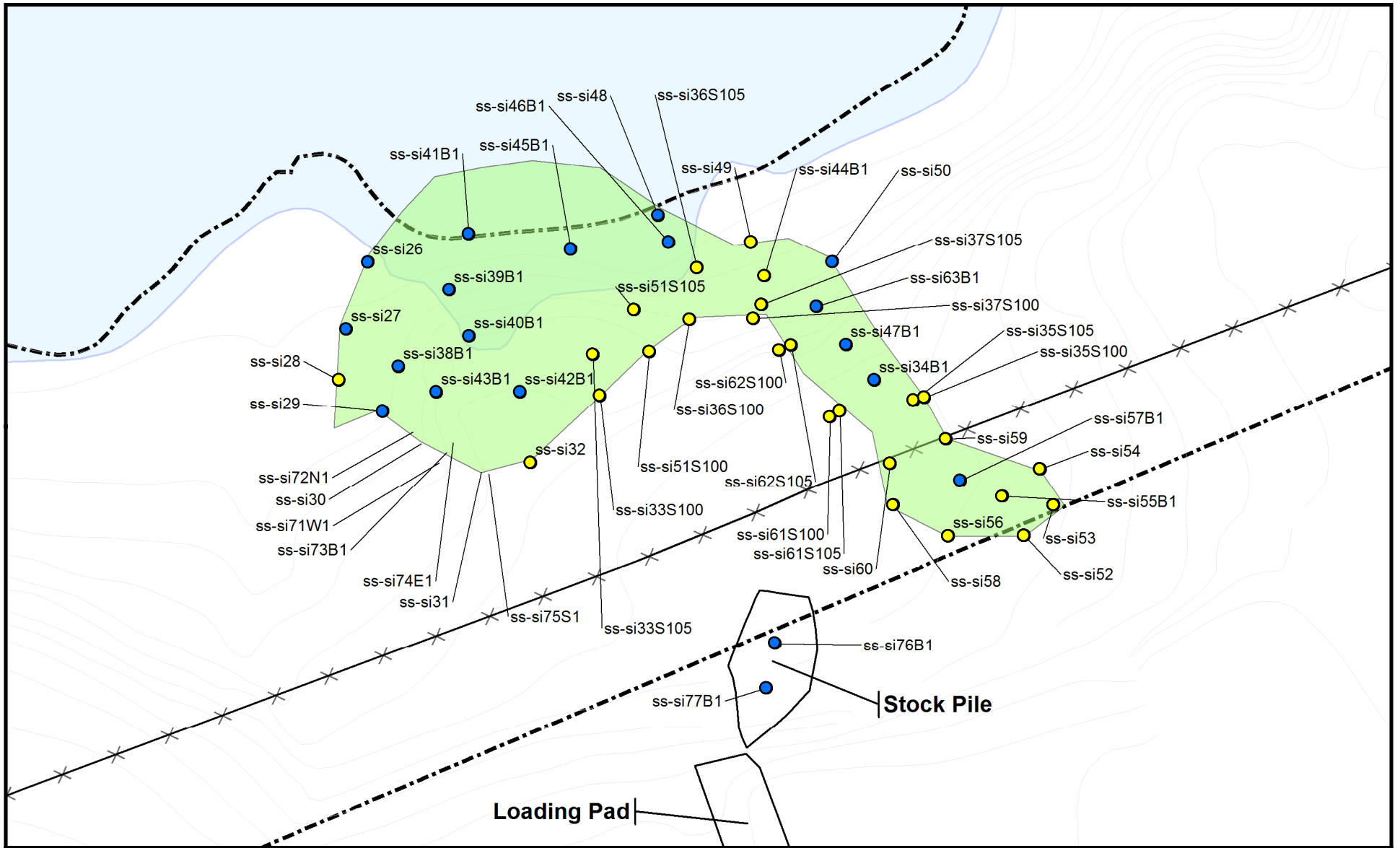
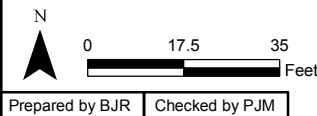


Figure 5  
 Slag Removal Confirmatory Soil Sample Locations  
 SVOC Exceedances

Former Gorham Manufacturing Site  
 333 Adelaide Avenue  
 Providence, Rhode Island



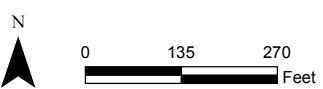
**Legend**

- Confirmatory Sample Locations
- SVOCs Exceed Ind/Com Standard
- Excavated Area
- Approximate Site Boundary
- Elevation
- ✕ City Fence



**Legend**

- ▲ Sediment Sample Location (2005-2006)
- ▼ Surface Water and Sediment Sample Location (2006)
- ▲ Sediment Sample Location (2011)
- ▼ Surface Water and Sediment Sample Location (2011)
- Approximate Site Boundary
- Study Areas
- Approximate Pond



Former Gorham Manufacturing Site  
 333 Adelaide Avenue Site  
 Providence, Rhode Island

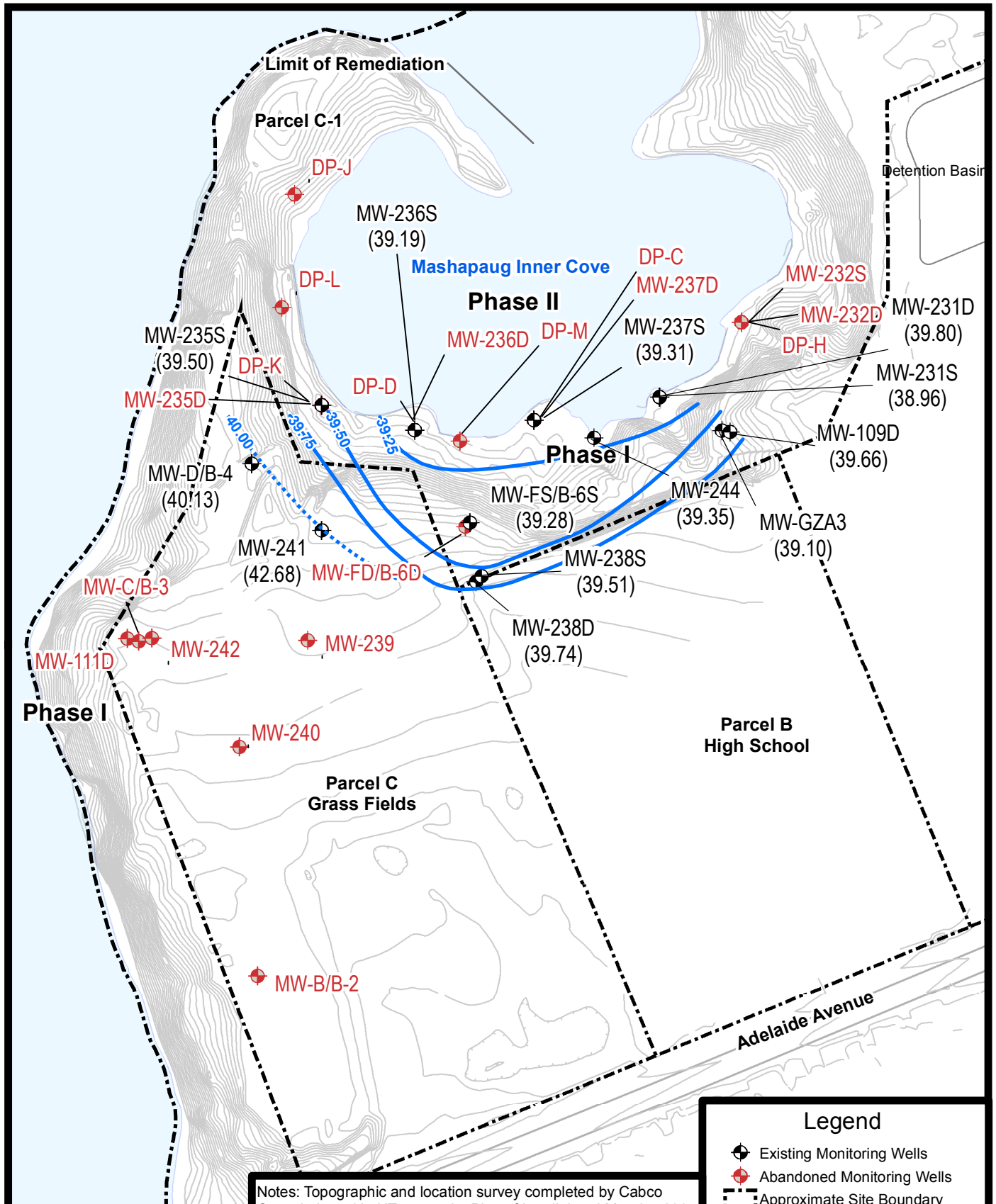
amec foster wheeler



Surface Water and Sediment Sample Locations  
 2005-2016

Project 3652-16-0080

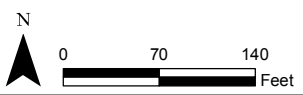
Figure 6



Notes: Topographic and location survey completed by Cabco Consult, Inc. titled 'Topographic Plan of Land' dated May 24, 2007. Parcel B topography and field survey completed by Edward Rowse Architects Titled "Providence High School, Gorham Mills, Providence Rhode Island, Site Plan" dated 2007.

**Legend**

- Existing Monitoring Wells
- Abandoned Monitoring Wells
- Approximate Site Boundary
- Elevation
- Groundwater Contour
- Inferred Groundwater Contour



Former Gorham Manufacturing Site  
333 Adelaide Avenue  
Providence, RI



Parcel C and C-1 Groundwater Contours  
March 27, 2017  
Project 3652-16-0080 Figure 7



