



Proactive by Design

GEOTECHNICAL
ENVIRONMENTAL
ECOLOGICAL
WATER
CONSTRUCTION
MANAGEMENT



MEMORANDUM

To: Joseph Martella, RIDEM

From: Dave Rusczyk, GZA

Cc: Kenneth Lento, National Grid

Date: August 30, 2021

Re: Site Response Action Report
Period August 8, 2021 through August 21, 2021
Former Tidewater Facility
Pawtucket, Rhode Island
RIDEM Case No. 95-022 / Site Remediation File No. SR-26-0934

SITE ACTIVITIES PERFORMED

- Charter Contracting Company, LLC (Charter) continued activities related to implementation of the remedial construction work. These activities included:
 - Completion of the installation of the containment wall.
 - Completion of the deployment of the geomembrane liner system in the southern portion of the Site.
 - Continued installation of the engineered cap underdrain system and placement of the clean imported engineered cap materials in the southern portion of the Site.
 - Continued deployment of the geomembrane line system east of the substation building.
 - Continued construction of the revetment system in the southern portion of the Site.
 - Continued sealing of the combined sewer outfall penetration through the containment wall.
- Perimeter air monitoring was performed during the period covered by this report with 11 air monitoring stations (4 solar powered units located proximate to the river and 7 electrically powered units). With the exception of the period between Saturday, August 14, 2021 and the morning of Monday, August 16, 2021, these stations measured and recorded respirable dust and total volatile organic compounds (TVOC) concentrations continuously 24 hours per day/7 days per week. Between Saturday, August 14, 2021 and the morning of Monday, August 16, 2021, maintenance and system upgrades were being performed on the air monitoring stations. We note, no work activities were being performed during this period. As indicated in the attached weekly perimeter air monitoring graphs, no exceedances of the TVOC (0.5 parts per million) and respirable dust ($150 \mu\text{g}/\text{m}^3$) perimeter threshold levels were noted during the period covered by this report.
- GZA collected ambient air samples from upwind and downwind locations on August 12, 2021 and August 19, 2021 for laboratory analysis for benzene, toluene, ethylbenzene, xylenes, and naphthalene. The analytical results from these samples indicated there were no exceedances of the project action levels. The analytical results were posted to the project website and the bulletin boards at the ends of Tidewater Street and Bowles Court and are also attached to this report.



ANTICIPATED SITE ACTIVITIES TO BE PERFORMED WITHIN NEXT 2 WEEKS

- Continued installation of the geomembrane liner and underdrain system east of the substation.
- Initial installation of the cap on the containment wall.
- Sealing of the Combined Sewer Outfall penetration through the containment wall.
- Continued import of clean fill to construct the engineered cap in the southern portion of the Site.

Please contact Kenneth Lento at 781-907-3655 if you have any questions or comments.

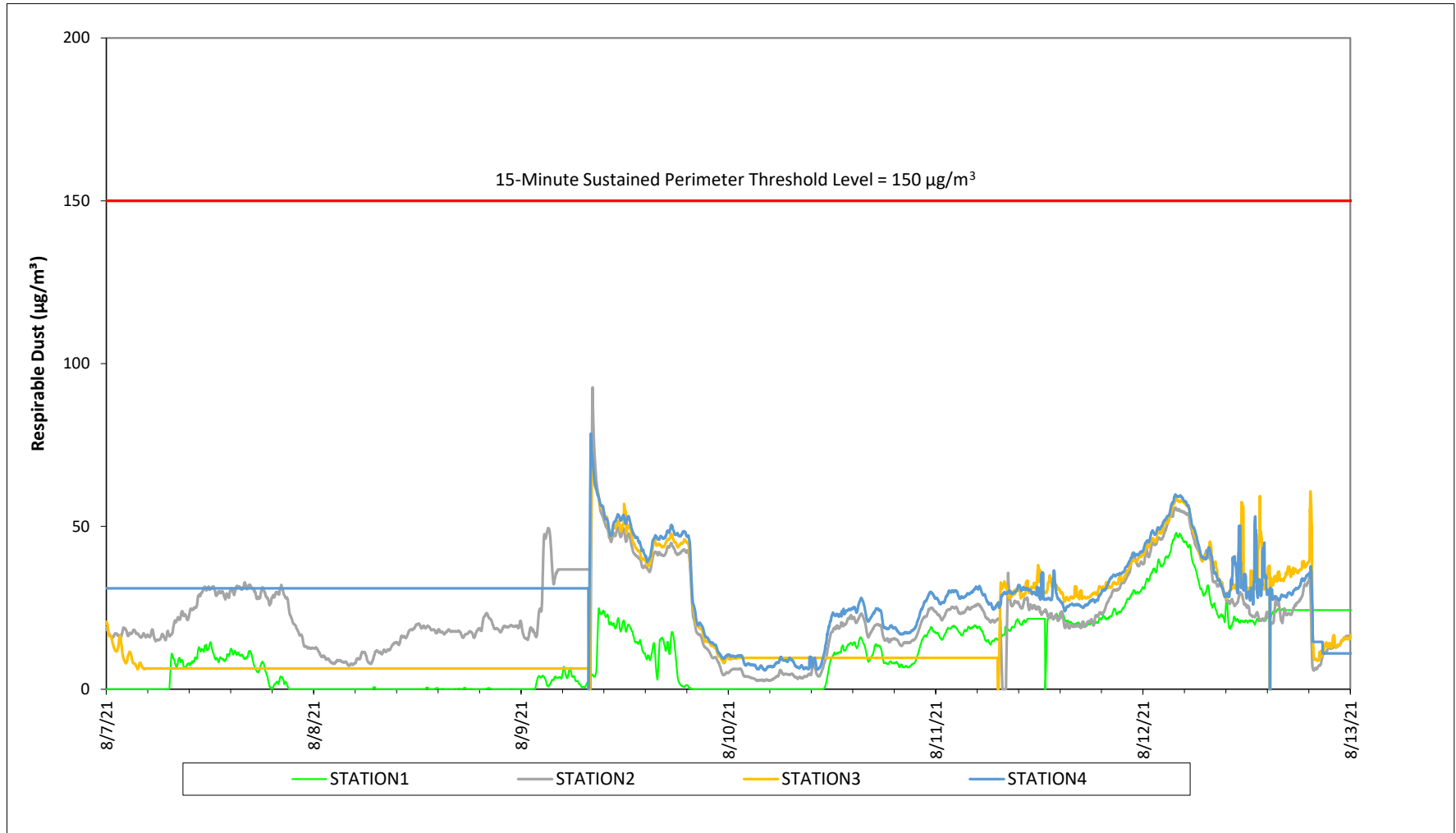
Attachments:

Weekly Perimeter Air Monitoring Results

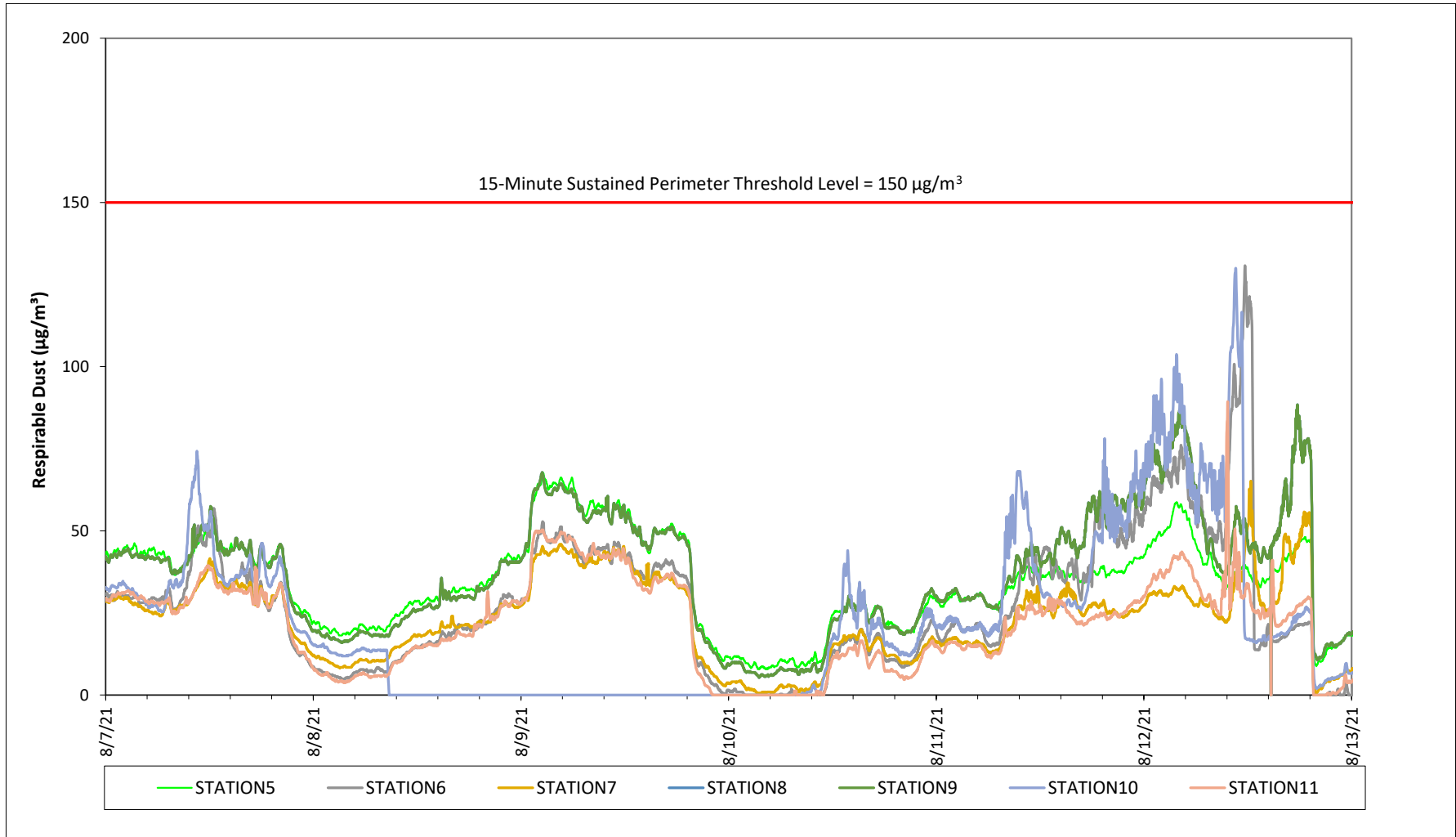
Air Monitoring Station Locations

Weekly Ambient Air Sampling Results

Prepared by National Grid for the Businesses and Residents Located Near the Former
Tidewater Facility
Air Quality Monitoring - Respirable Dust

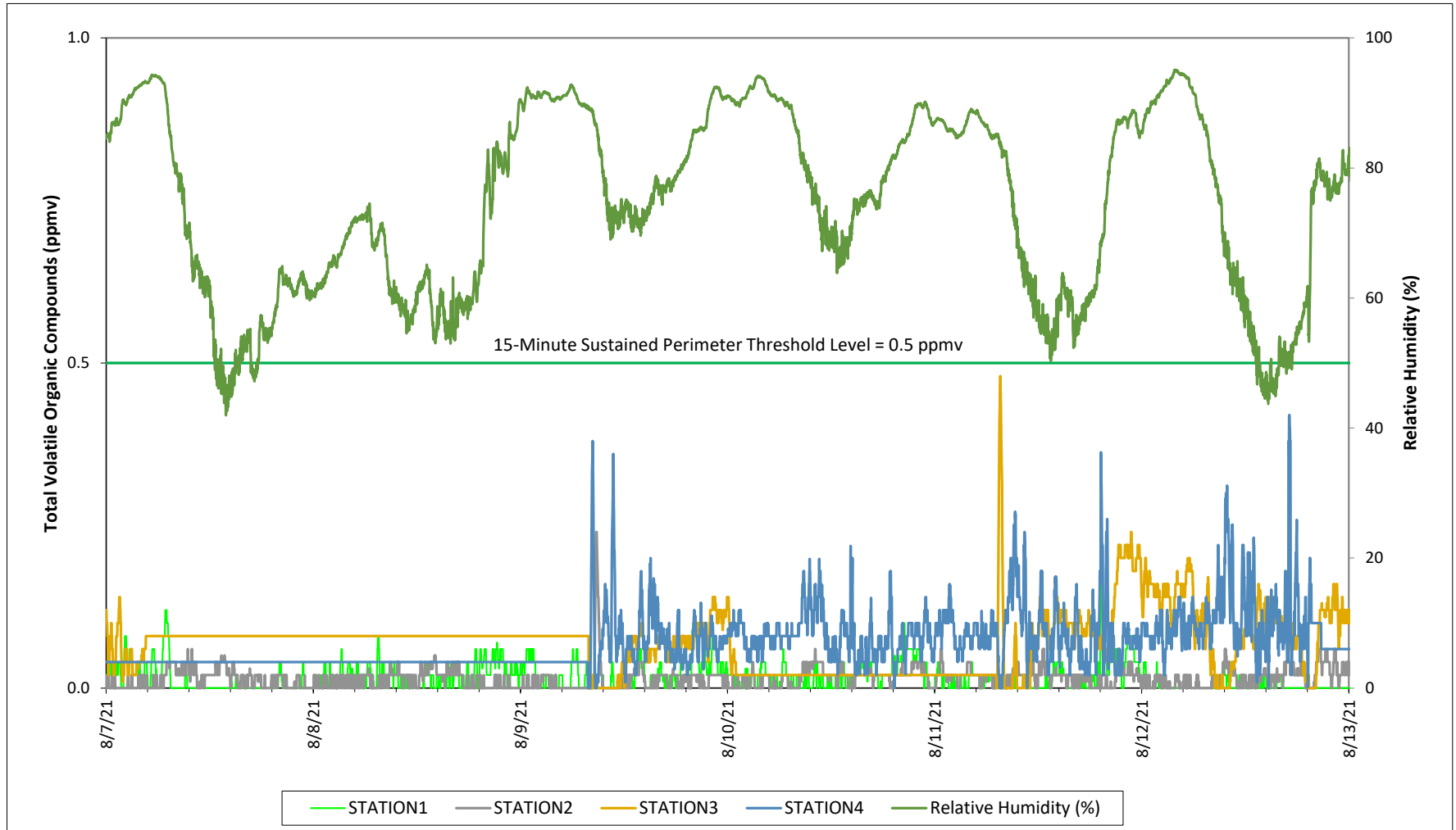


Prepared by National Grid for the Businesses and Residents Located Near the Former
Tidewater Facility
Air Quality Monitoring - Respirable Dust



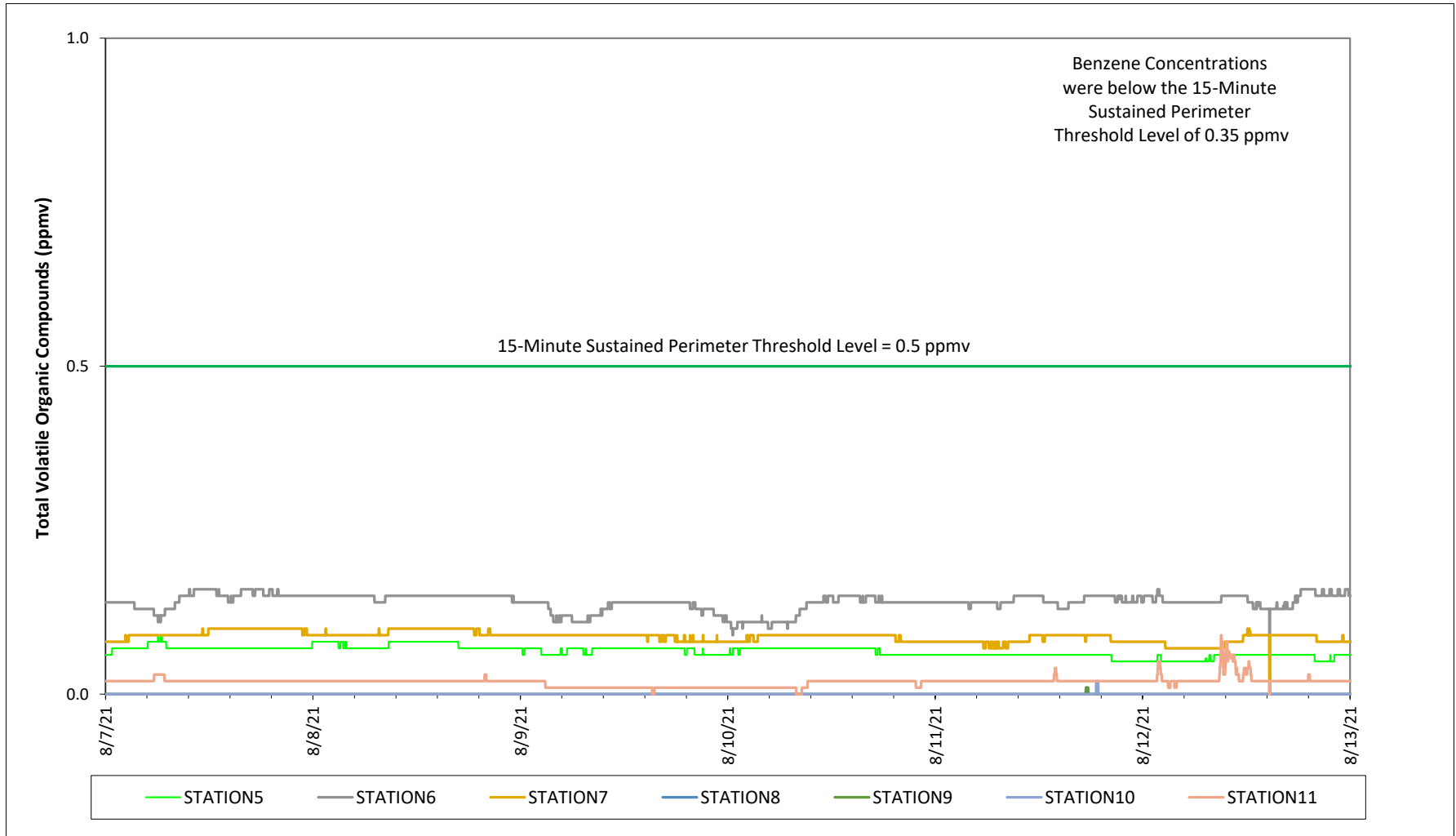
Prepared by National Grid for the Businesses and Residents Located Near the Former
Tidewater Facility

Air Quality Monitoring - Total Volatile Organic Compounds

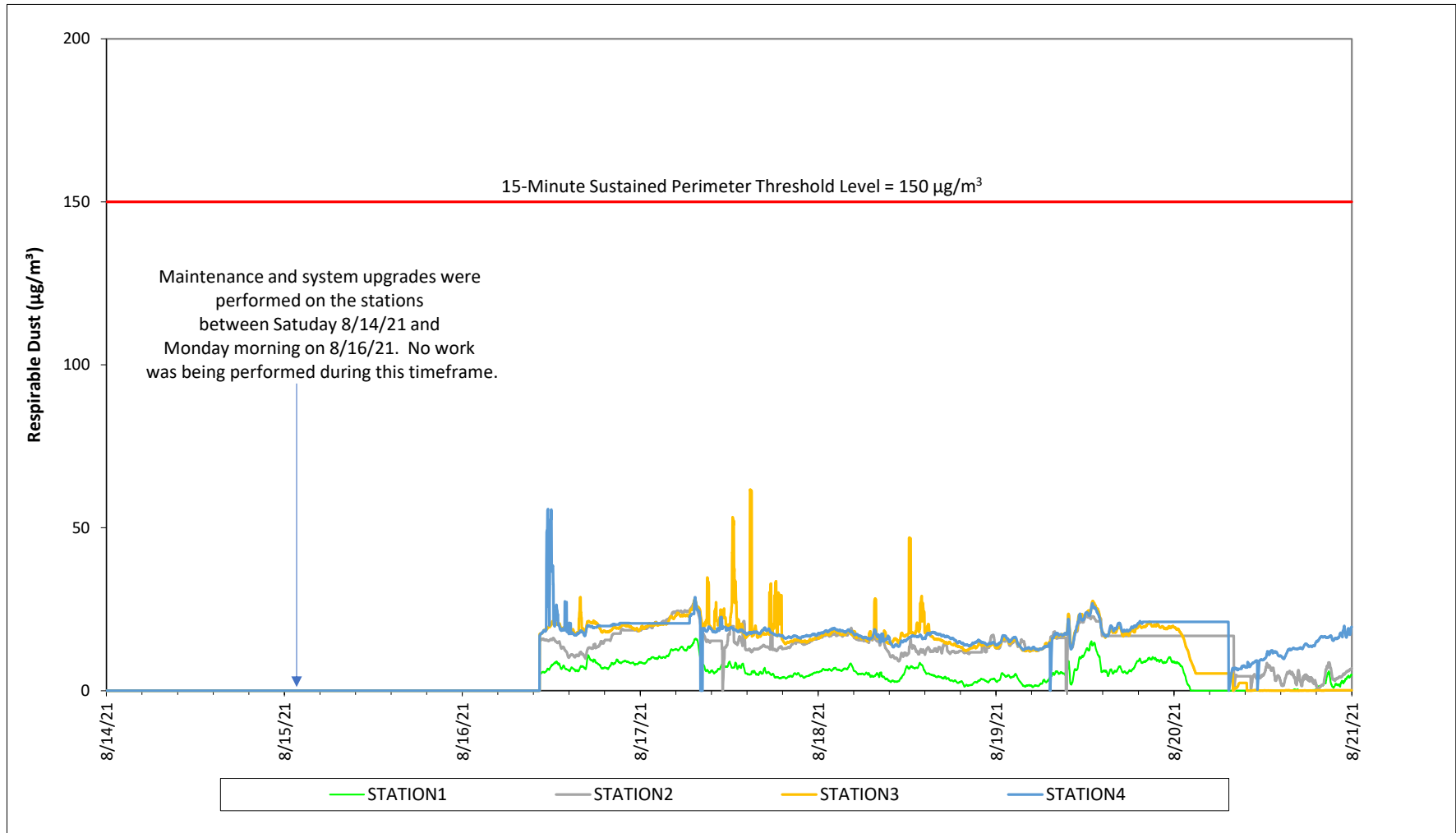


Prepared by National Grid for the Businesses and Residents Located Near the Former
Tidewater Facility

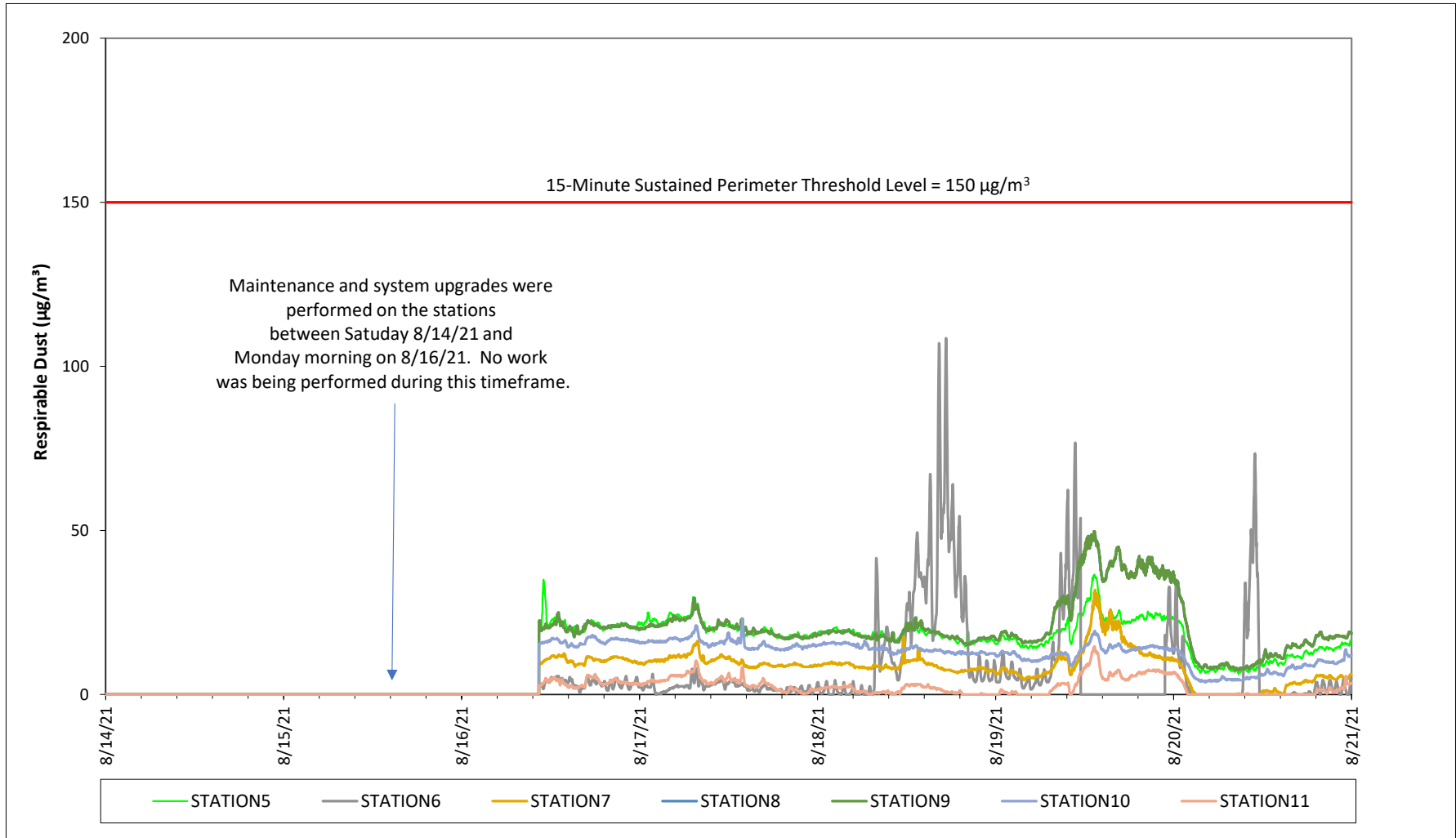
Air Quality Monitoring - Total Volatile Organic Compounds



Prepared by National Grid for the Businesses and Residents Located Near the Former
Tidewater Facility
Air Quality Monitoring - Respirable Dust

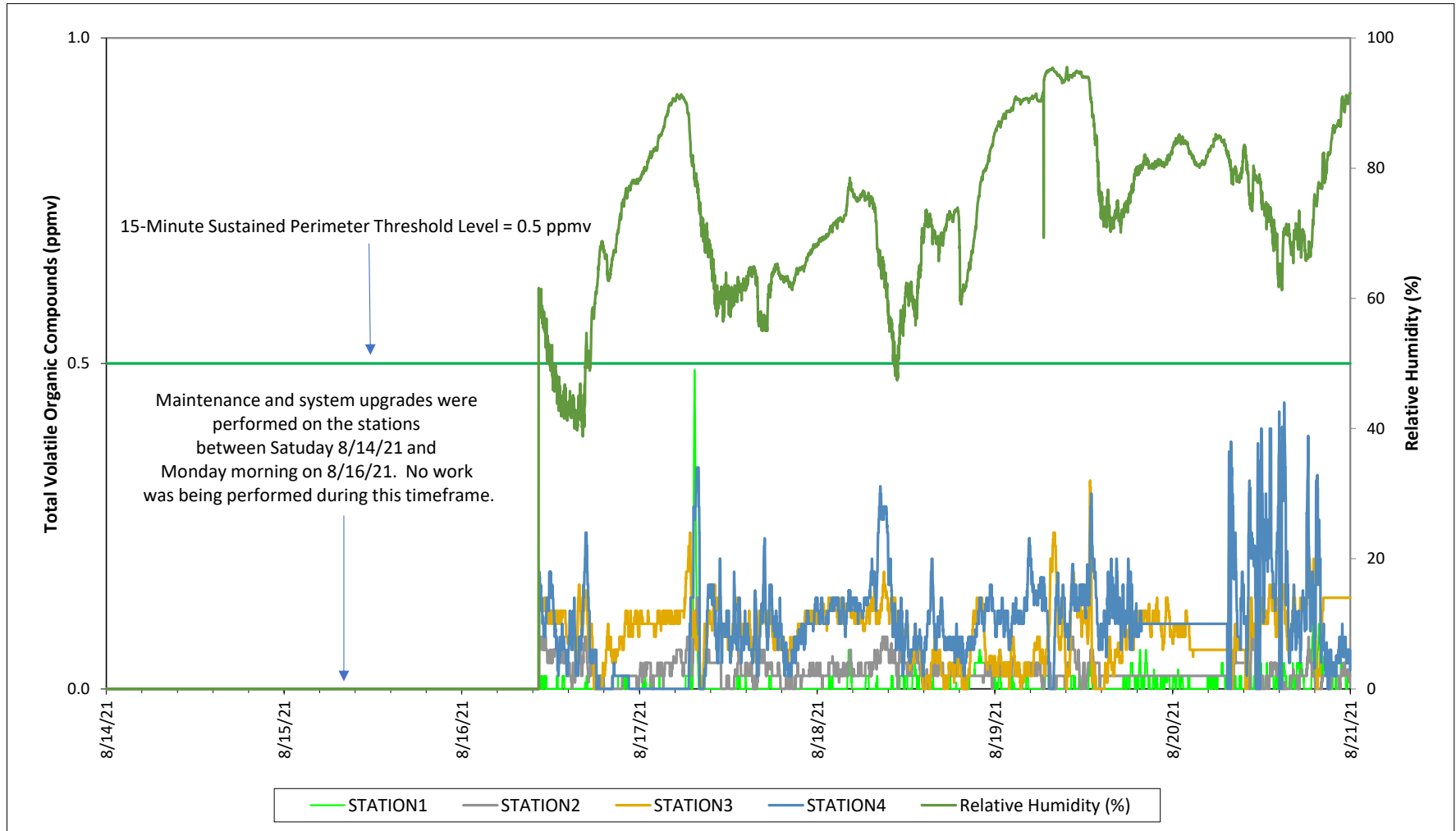


Prepared by National Grid for the Businesses and Residents Located Near the Former
Tidewater Facility
Air Quality Monitoring - Respirable Dust



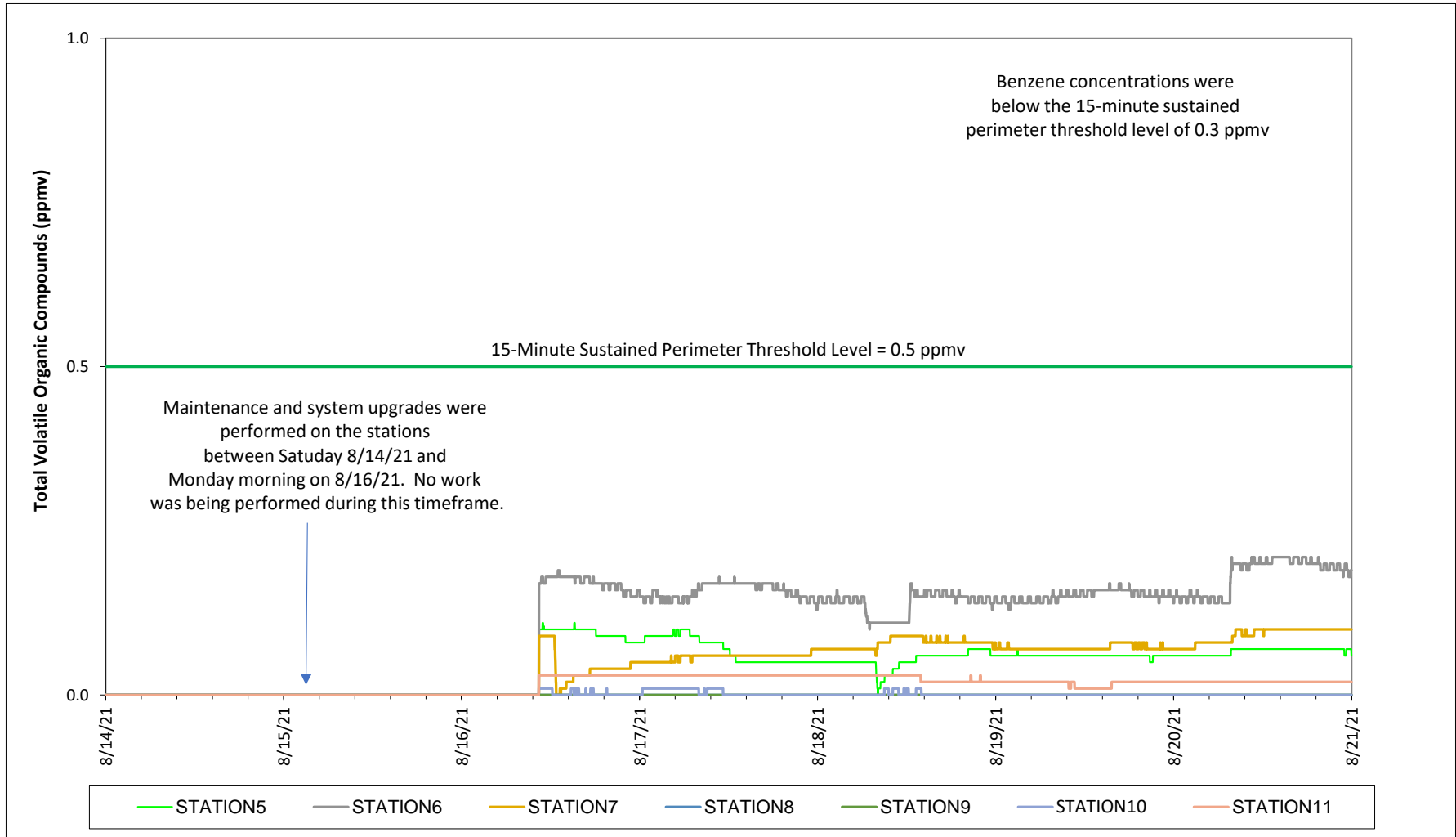
Prepared by National Grid for the Businesses and Residents Located Near the Former
Tidewater Facility

Air Quality Monitoring - Total Volatile Organic Compounds

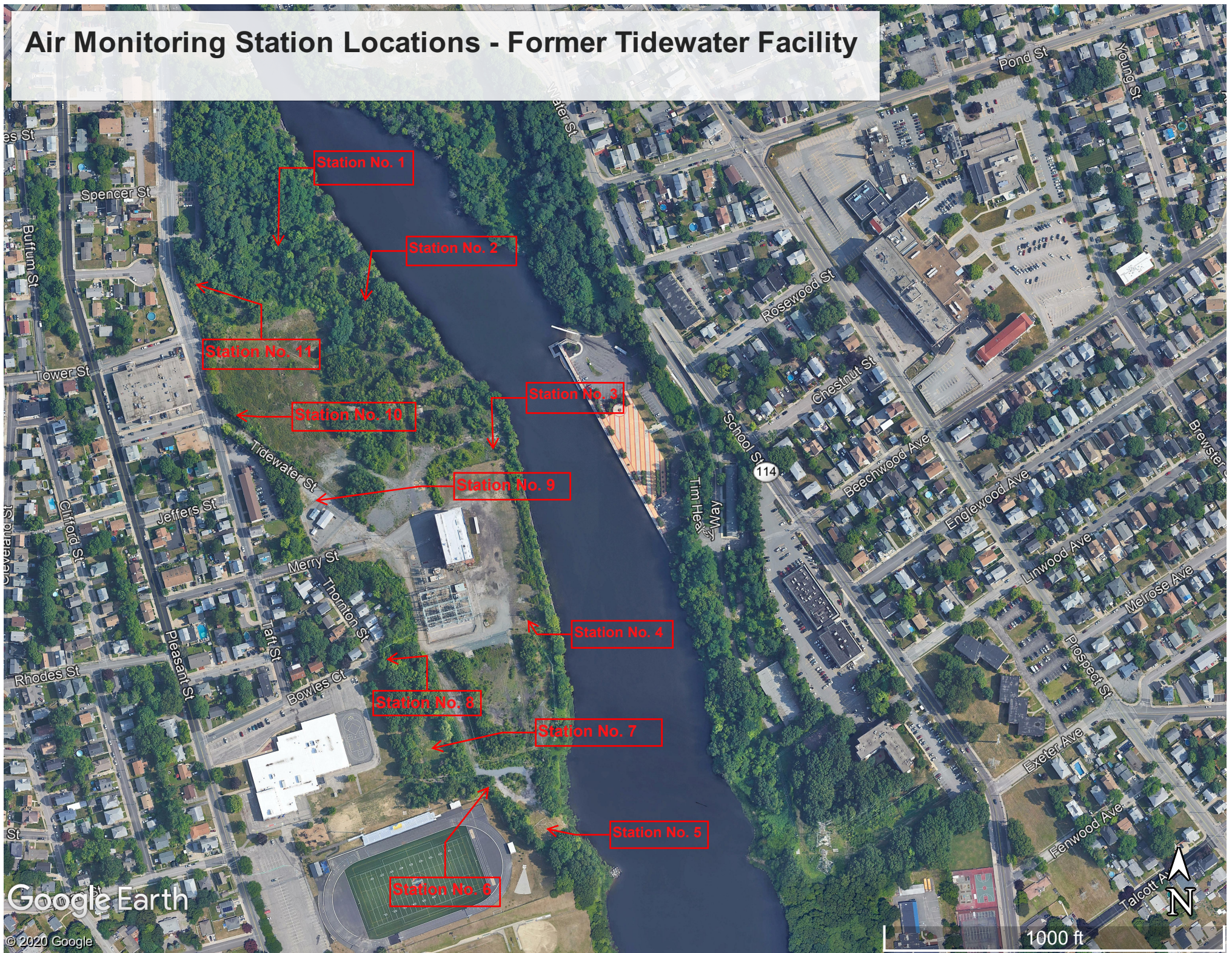


Prepared by National Grid for the Businesses and Residents Located Near the Former Tidewater Facility

Air Quality Monitoring - Total Volatile Organic Compounds



Air Monitoring Station Locations - Former Tidewater Facility



Google Earth

© 2020 Google

1000 ft



**Prepared by National Grid for the Businesses and Residents Located Near the Former Tidewater Facility
Weekly Ambient Air Sampling Results**

Sample Date	Compounds				
	Benzene	Toluene	Ethylbenzene	Total Xylenes	Naphthalene
	(ppb v/v)				
12-3-20 UP STREAM	0.13	0.22	0.079	0.054	< 0.5
12-3-20 DOWN STREAM	0.13	0.2	0.073	0.05	< 0.5
12-10-20 UP STREAM	0.25	0.23	< 0.2	0.14	< 0.5
12-10-20 DOWN STREAM	0.17	0.2	< 0.2	< 0.7	< 0.5
12-16-20 UP STREAM	0.19	0.2	0.083	0.12	< 0.5
12-16-20 DOWN STREAM	0.13	0.16	0.078	0.094	< 0.5
12-23-20 UP STREAM	0.15	0.16	< 0.2	0.1	< 0.5
12-23-20 DOWN STREAM	0.13	0.11	< 0.2	< 0.7	< 0.5
12-30-20 UP STREAM	0.21	0.22	< 0.2	< 0.7	< 0.5
12-30-20 DOWN STREAM	0.089	< 0.2	< 0.2	< 0.7	< 0.5
1/7/21 UP STREAM	0.29	1.5	0.22	2.1	< 0.5
1/7/21 DOWN STREAM	0.16	0.27	0.086	0.42	< 0.5
1/14/21 UP STREAM	0.43	0.44	< 0.2	0.23	< 0.5
1/14/21 DOWN STREAM	0.4	0.52	0.076	0.3	< 0.5
1-21-21 UPSTREAM	0.15	0.28	0.1	< 0.7	0.24
1-21-21 DOWNSTREAM	0.18	0.23	0.11	0.1	< 0.5
1-28-21 UPSTREAM	0.21	0.19	< 0.2	< 0.7	< 0.5
1-28-21 DOWNSTREAM	0.21	0.17	< 0.2	< 0.7	< 0.5
2-4-21 UPSTREAM	0.2	1.1	0.23	1.4	0.18
2-4-21 DOWNSTREAM	0.23	0.29	0.26	0.29	< 1.1
2-11-21 UPSTREAM	0.19	0.12	< 0.2	< 0.7	< 0.5
2-11-21 DOWNSTREAM	0.17	< 0.2	< 0.2	< 0.7	< 0.5
2-18-21 UPSTREAM	0.46	2.8	0.11	0.25	< 0.5
2-18-21 DOWNSTREAM	0.31	0.42	0.13	0.45	< 0.5
2-25-21 UPSTREAM	< 0.2	0.16	< 0.2	0.16	< 0.5
2-25-21 DOWNSTREAM	0.13	< 0.2	0.081	0.3	< 0.5
3-4-21 UPSTREAM	0.2	0.21	< 0.2	0.18	0.27
3-4-21 DOWNSTREAM	0.15	0.12	< 0.2	0.16	< 0.5
3-11-21 UPSTREAM	0.18	0.17	< 0.2	0.23	0.3
3-11-21 DOWNSTREAM	0.18	0.22	0.23	1.0	< 0.5
3-18-21 DOWNSTREAM	0.44	1.6	0.19	0.67	< 0.5
3-25-21 UPSTREAM	0.17	0.32	0.85	4.1	0.53
3-25-21 DOWNSTREAM	0.33	0.67	0.16	0.57	0.27
4-1-21 UPSTREAM	0.22	0.17	< 0.2	< 0.7	< 0.5
4-1-21 DOWNSTREAM	0.12	0.11	< 0.2	< 0.7	< 0.5
4-8-21 UPSTREAM	0.096	0.12	1.5	8.0	< 0.5
4-8-21 DOWNSTREAM	0.086	0.14	0.086	0.38	0.19
4-15-21 UPSTREAM	0.85	0.57	0.1	0.44	< 0.5
4-15-21 DOWNSTREAM	0.11	0.11	0.26	1.20	< 0.5
4-22-21 UPSTREAM	0.11	< 0.2	< 0.2	< 0.7	< 0.5
4-22-21 DOWNSTREAM	0.11	0.16	< 0.2	< 0.7	< 0.5
4-29-21 UPSTREAM	0.14	0.34	0.11	0.32	0.26
4-29-21 DOWNSTREAM	0.19	0.39	0.11	0.37	0.27
5-6-21 UPSTREAM	0.086	0.15	< 0.2	< 0.7	0.38
5-6-21 DOWNSTREAM	1.0	8.4	0.21	0.69	< 0.5
5-13-21 UPSTREAM	< 0.2	0.36	< 0.2	0.19	0.34
5-13-21 DOWNSTREAM	0.12	< 0.2	< 0.2	< 0.7	< 0.5
5-20-2021 UPSTREAM	0.38	2.5	< 0.2	< 0.7	< 0.5
5-20-2021 DOWNSTREAM	0.16	0.56	0.3	1.40	< 0.5
Project Action Levels	6.2	80	230	23	20

**Prepared by National Grid for the Businesses and Residents Located Near the Former Tidewater Facility
Weekly Ambient Air Sampling Results**

Sample Date	Compounds				
	Benzene	Toluene	Ethylbenzene	Total Xylenes	Naphthalene
(ppb v/v)					
5-27-21 UPSTREAM	0.095	0.12	0.45	2.10	0.4
5-27-21 DOWNSTREAM	0.075	0.094	< 0.2	< 0.7	< 0.5
6-3-21 UPSTREAM	< 0.2	0.16	< 0.2	< 0.7	< 0.5
6-3-21 DOWNSTREAM	0.075	0.11	< 0.2	< 0.7	< 0.5
6-10-21 UPSTREAM	< 0.2	< 0.2	< 0.2	< 0.7	< 0.5
6-10-21 DOWNSTREAM	< 0.2	< 0.2	< 0.2	< 0.7	< 0.5
6-17-21 UPSTREAM	0.64	0.6	0.48	0.66	0.64
6-17-21 DOWNSTREAM	0.12	0.12	0.16	< 0.7	< 0.5
6-24-21 UPSTREAM	< 0.2	0.17	< 0.2	< 0.7	< 0.5
6-24-21 DOWNSTREAM	< 0.2	0.45	0.19	0.82	< 0.5
7-1-21 UPSTREAM	1.10	7.9	0.12	0.39	< 0.7
7-1-21 DOWNSTREAM	0.13	0.74	< 0.2	0.29	< 0.7
7-8-21 UPSTREAM	< 0.2	0.29	< 0.2	0.38	0.29
7-8-21 DOWNSTREAM	< 0.2	< 0.2	< 0.2	< 0.7	< 0.5
7-15-21 UPSTREAM	0.10	0.28	< 0.2	0.32	< 0.5
7-15-21 DOWNSTREAM	0.14	0.37	0.31	1.5	< 0.5
7-22-21 UPSTREAM	0.27	0.3	< 0.2	< 0.7	< 0.5
7-22-21 DOWNSTREAM	0.30	0.33	< 0.2	< 0.7	< 0.5
7-29-21 UPSTREAM	0.22	0.26	0.1	0.56	0.19
7-29-21 DOWNSTREAM	0.099	0.23	< 0.2	< 0.7	< 0.5
8-5-21 UPSTREAM	0.70	1.2	< 0.2	0.17	< 0.5
8-5-21 DOWNSTREAM	0.310	0.53	< 0.25	< 0.88	< 0.63
8-12-21 UPSTREAM	0.19	0.18	< 0.2	< 0.7	0.2
8-12-21 DOWNSTREAM	1.2	0.7	< 0.2	0.31	< 0.5
8-19-21 UPSTREAM	0.66	6.2	1.2	3.50	< 1.6
8-19-21 DOWNSTREAM	0.21	0.24	< 0.2	0.11	< 0.5
Project Action Levels	6.2	80	230	23	20

Notes:

1. The Project Action Levels are consistent with the Air Quality Monitoring Plan developed for the Site.
2. Air samples are collected in stainless steel summa canisters over an approximately 8-hour period.
3. Air samples are analyzed by EuroFins TestAmerica of Burlington, VT.
4. Results and action levels are listed in parts per billion volume/volume (ppb v/v).
5. An upstream ambient air sample was not collected on March 18, 2021 due to a problem with the sampling equipment.