



Proactive by Design

GEOTECHNICAL
ENVIRONMENTAL
ECOLOGICAL
WATER
CONSTRUCTION
MANAGEMENT



MEMORANDUM

To: Joseph Martella, RIDEM

From: Dave Rusczyk, GZA

Cc: Kenneth Lento, National Grid

Date: October 14, 2021

Re: Site Response Action Report
Period September 19, 2021 through October 2, 2021
Former Tidewater Facility
Pawtucket, Rhode Island
RIDEM Case No. 95-022 / Site Remediation File No. SR-26-0934

SITE ACTIVITIES PERFORMED

- Charter Contracting Company, LLC (Charter) continued activities related to implementation of the remedial construction work. These activities included:
 - Continued placement of clean imported engineered cap materials in the southern and eastern portions of the Site.
 - Continued construction of the revetment system in the southern portion of the Site.
 - Continued installation of the perimeter chain link fencing in the southern portion of the Site.
 - Initiation of the installation of the galvanized cap on the top of the containment wall.
 - Continued grubbing of organic material in the northern portion of the Site and off-Site disposal of the resulting organic waste.
 - Initiation of demolition activities in the northern portion of the Site.

- Perimeter air monitoring was performed during the period covered by this report with 11 air monitoring stations (4 solar powered units located proximate to the river and 7 electrically powered units). These stations measured and recorded respirable dust and total volatile organic compounds (TVOC) concentrations continuously 24 hours per day/7 days per week with the exception of the following periods:
 - Between September 19 and September 21, 2021, there was communication error between Stations 3 and 4 and the centralized computer system. The communication error was reset on September 21, 2021.
 - The internal circuit breaker within Station 3 tripped on Saturday, September 25, 2021. The breaker was reset on September 27, 2021.
 - On Sunday, September 26, there was communication error between Station 2 and the centralized computer system. The communication error was reset on September 27, 2021.
 - Between September 28 and September 29, 2021, the solar panel on Station 3 was not charging the battery for the monitoring station. The solar panel was replaced September 29, 2021.
 - The internal circuit breaker within Station 11 repeatedly tripped between September 20, 2021 and October 6, 2021 due to a malfunctioning gas chromatograph. The gas chromatograph was replaced on October 6, 2021.



As indicated in the attached weekly perimeter air monitoring graphs, isolated exceedances of the total volatile organic compound perimeter threshold level (0.5 ppmv) were noted on September 20, 2021 at 3:24 a.m. and September 30, 2021 at 10:56 pm at solar powered Station 1 in the northern portion of the Site. Work was not being performed at these times and the isolated elevated TVOC concentrations were attributed to an increase in humidity levels.

- GZA collected ambient air samples from upwind and downwind locations on September 23, 2021 and September 30, 2021 for laboratory analysis for benzene, toluene, ethylbenzene, xylenes, and naphthalene. The analytical results from these samples indicated there were no exceedances of the project action levels. The analytical results were posted to the project website and the bulletin boards at the ends of Tidewater Street and Bowles Court and are also attached to this report.

ANTICIPATED SITE ACTIVITIES TO BE PERFORMED WITHIN NEXT 2 WEEKS

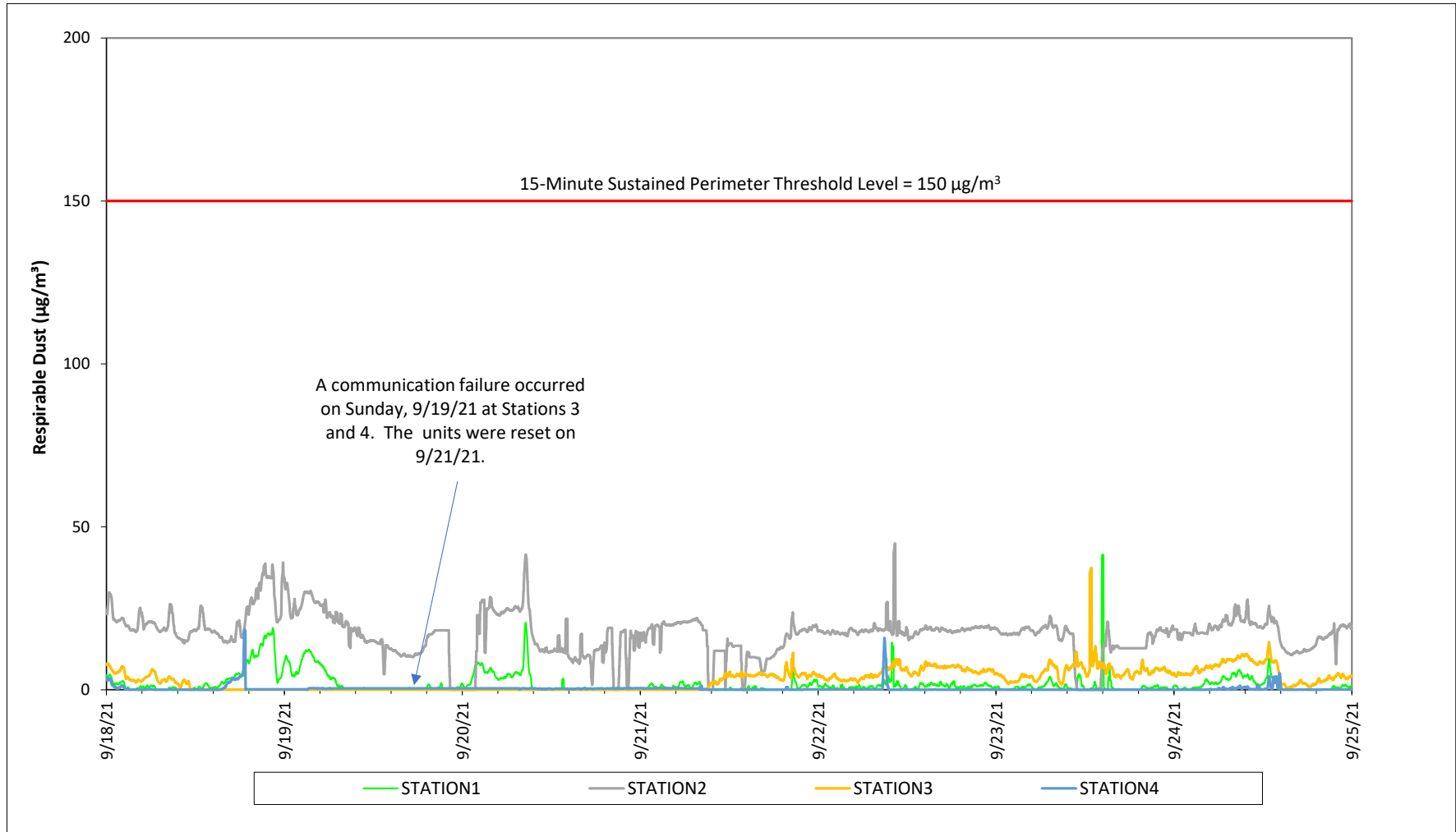
- Completion of the installation of the underdrain system east of the substation.
- Completion of the installation of the galvanized cap on the containment wall.
- Continued installation of the perimeter chain link fencing.
- Continued import of clean fill to construct the engineered caps in the eastern and southern portions of the Site.
- Completion of the grubbing of the organic matter in the northern portion of the Site.
- Completion of the construction of the revetment in the southern portion of the Site.
- Continued performance of demolition activities in the northern portion of the Site.
- Initiation of regrading in the northern portion of the Site to the subgrade elevations for the engineered cap.

Please contact Kenneth Lento at 781-907-3655 if you have any questions or comments.

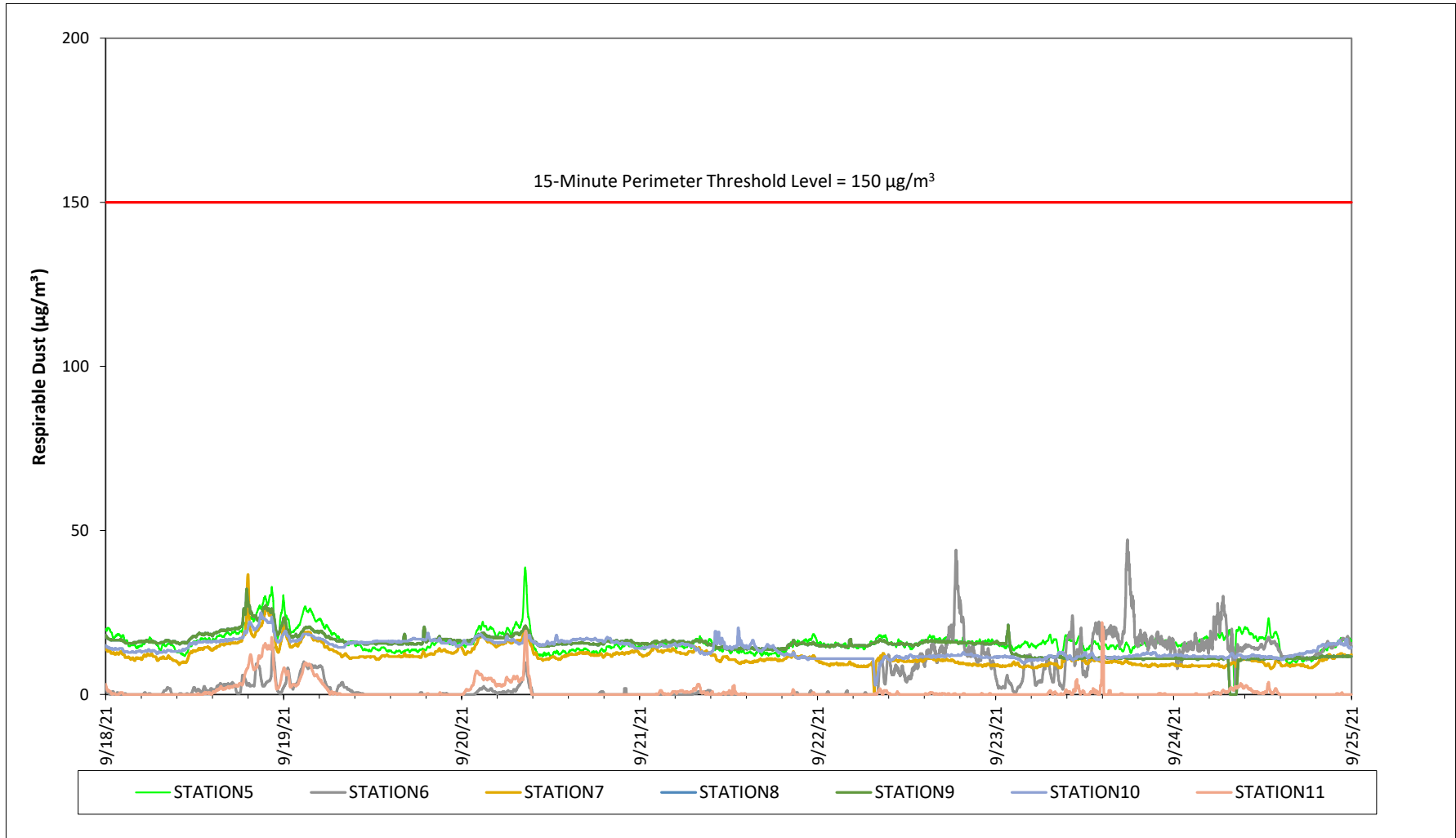
Attachments:

Weekly Perimeter Air Monitoring Results
Air Monitoring Station Locations
Weekly Ambient Air Sampling Results

Prepared by National Grid for the Businesses and Residents Located Near the Former
Tidewater Facility
Air Quality Monitoring - Respirable Dust

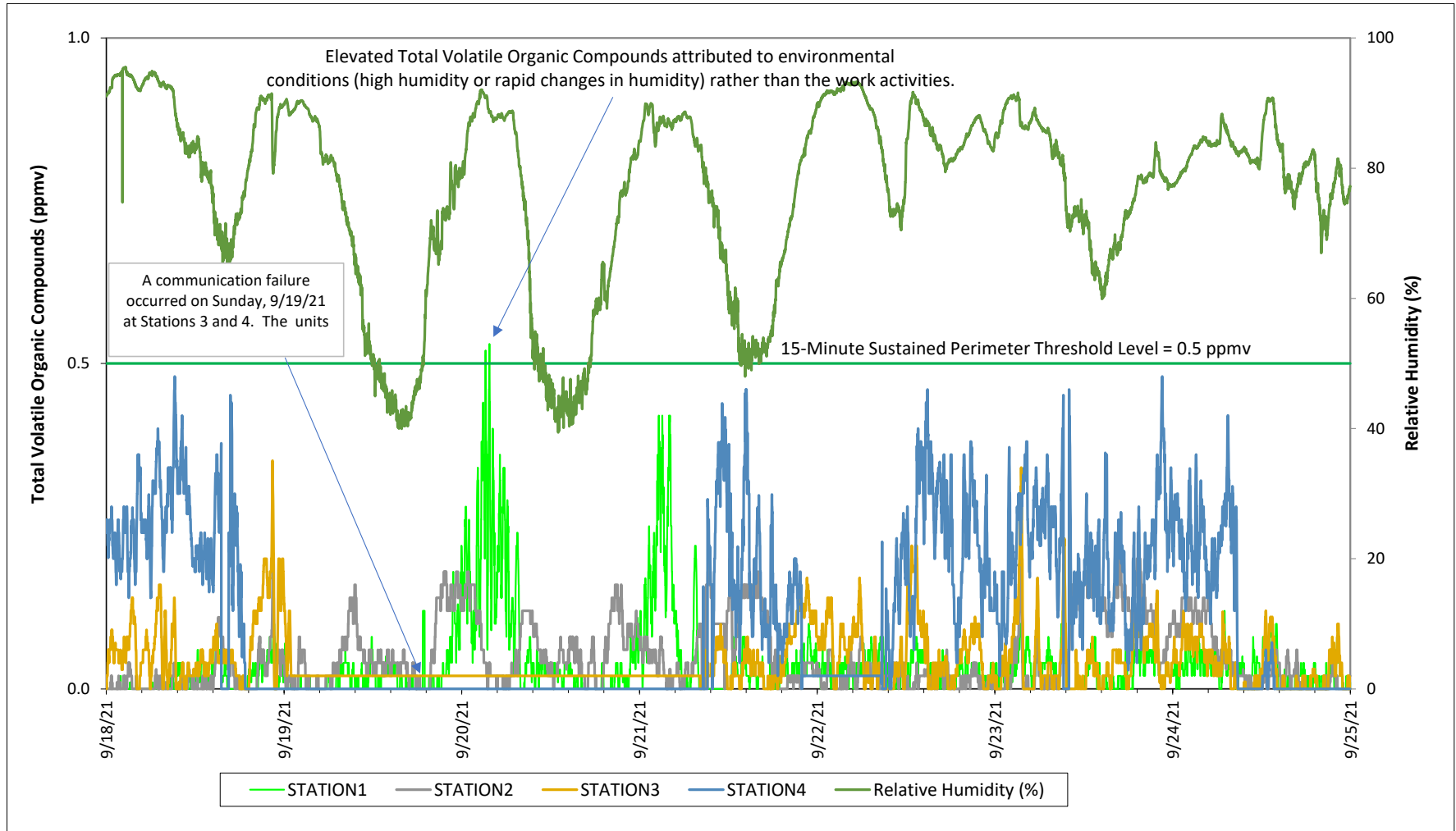


Prepared by National Grid for the Businesses and Residents Located Near the Former
Tidewater Facility
Air Quality Monitoring - Respirable Dust



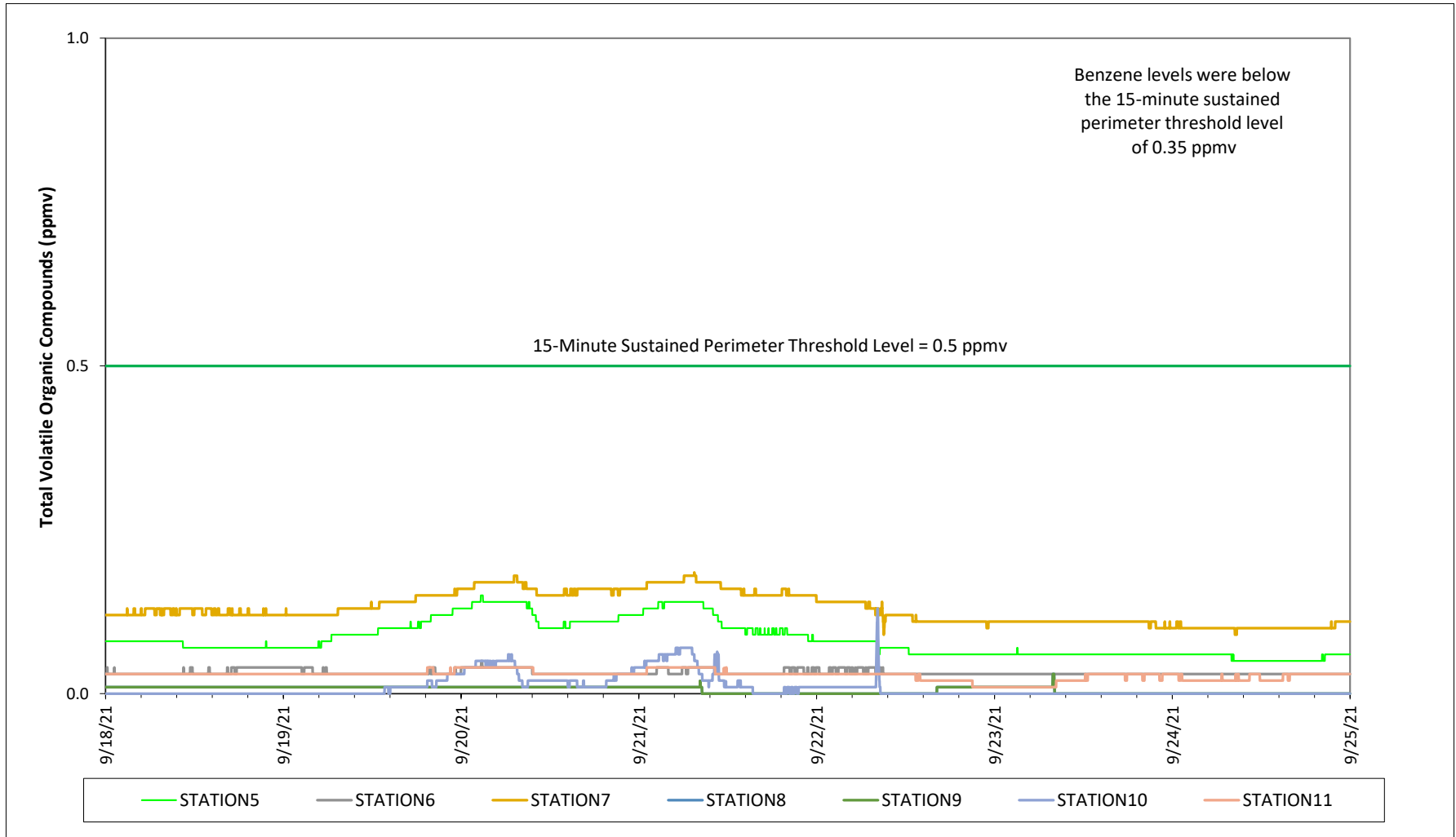
Prepared by National Grid for the Businesses and Residents Located Near the Former Tidewater Facility

Air Quality Monitoring - Total Volatile Organic Compounds

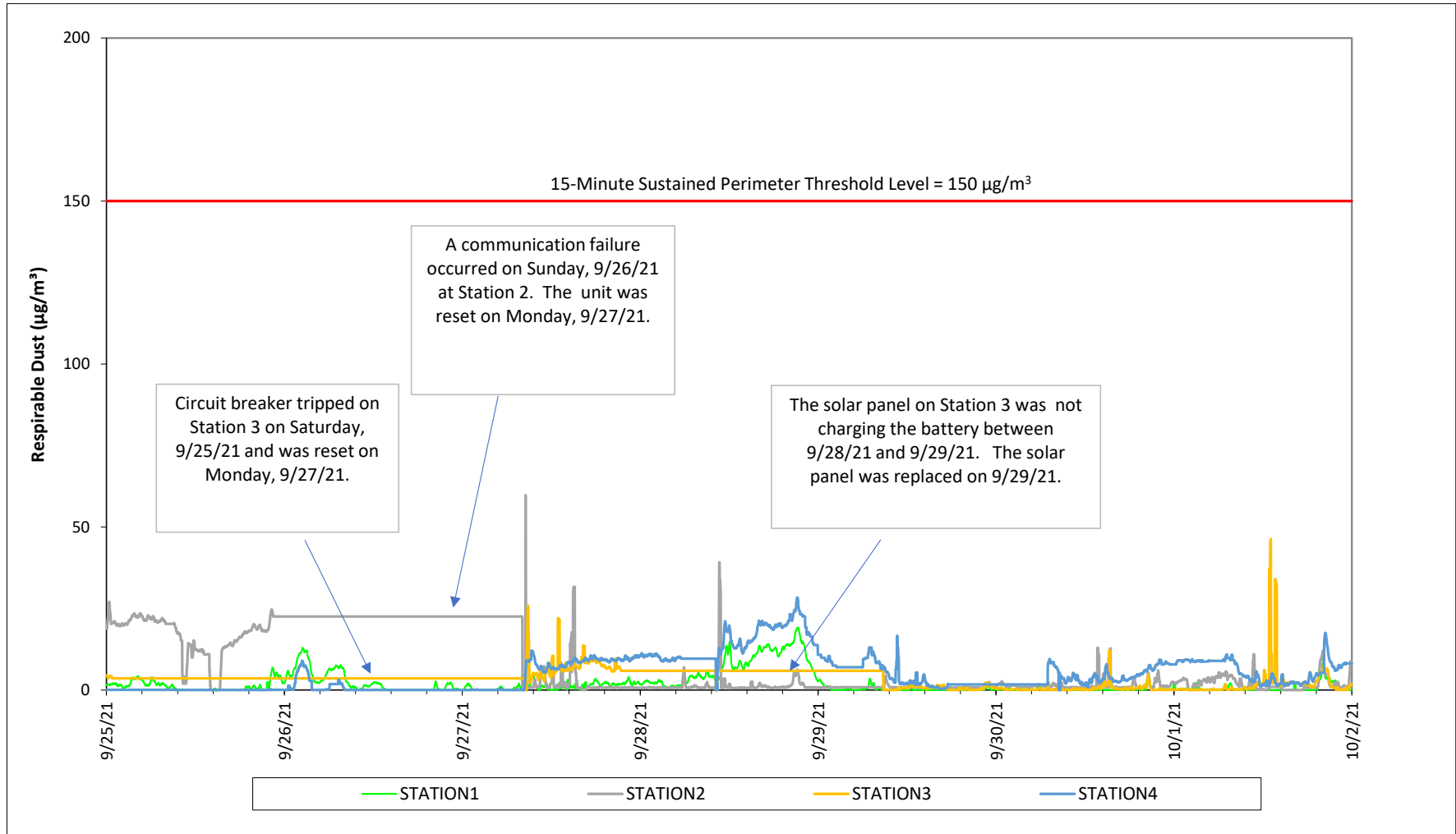


Prepared by National Grid for the Businesses and Residents Located Near the Former
Tidewater Facility

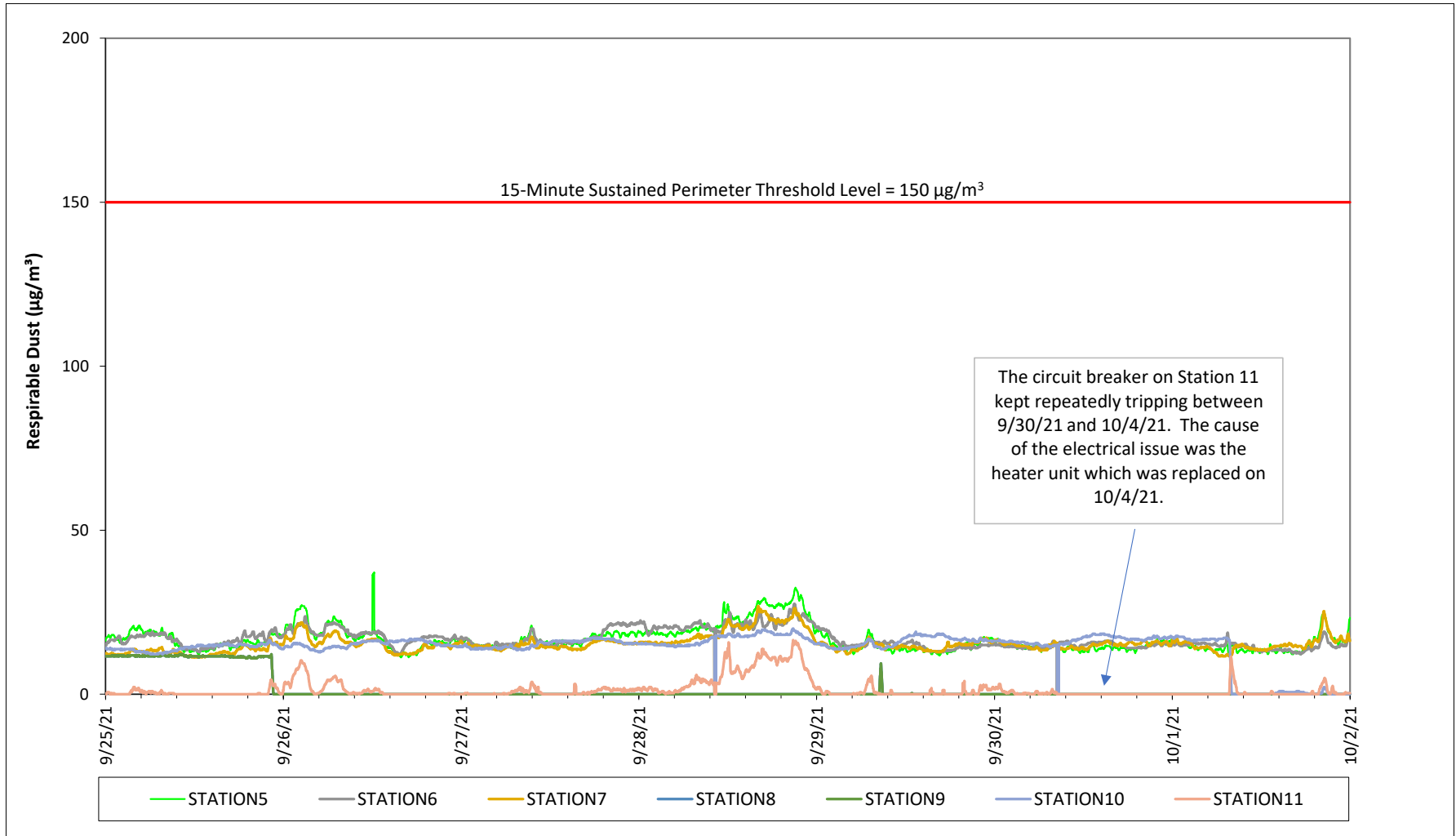
Air Quality Monitoring - Total Volatile Organic Compounds



Prepared by National Grid for the Businesses and Residents Located Near the Former
Tidewater Facility
Air Quality Monitoring - Respirable Dust

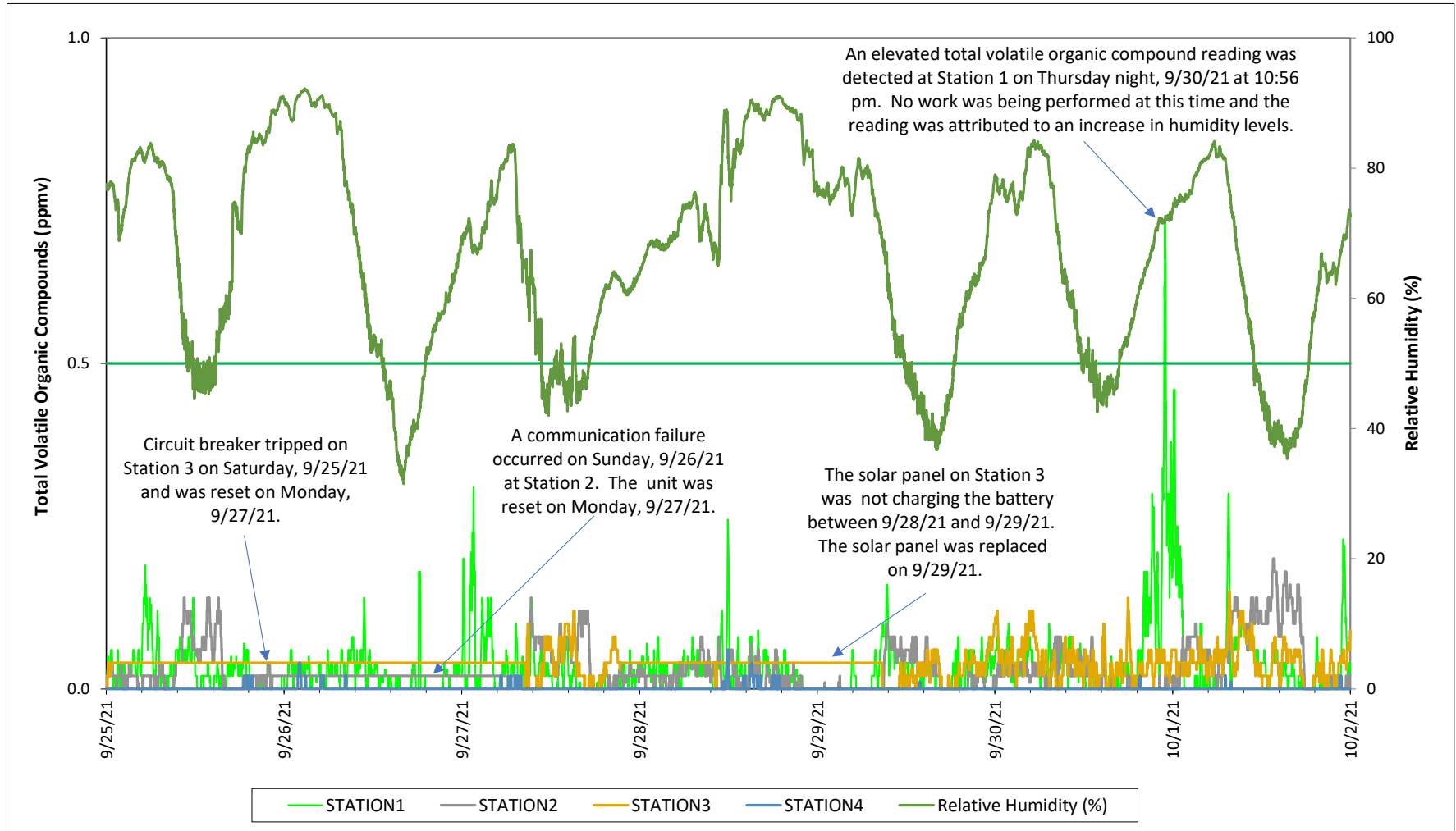


Prepared by National Grid for the Businesses and Residents Located Near the Former
Tidewater Facility
Air Quality Monitoring - Respirable Dust



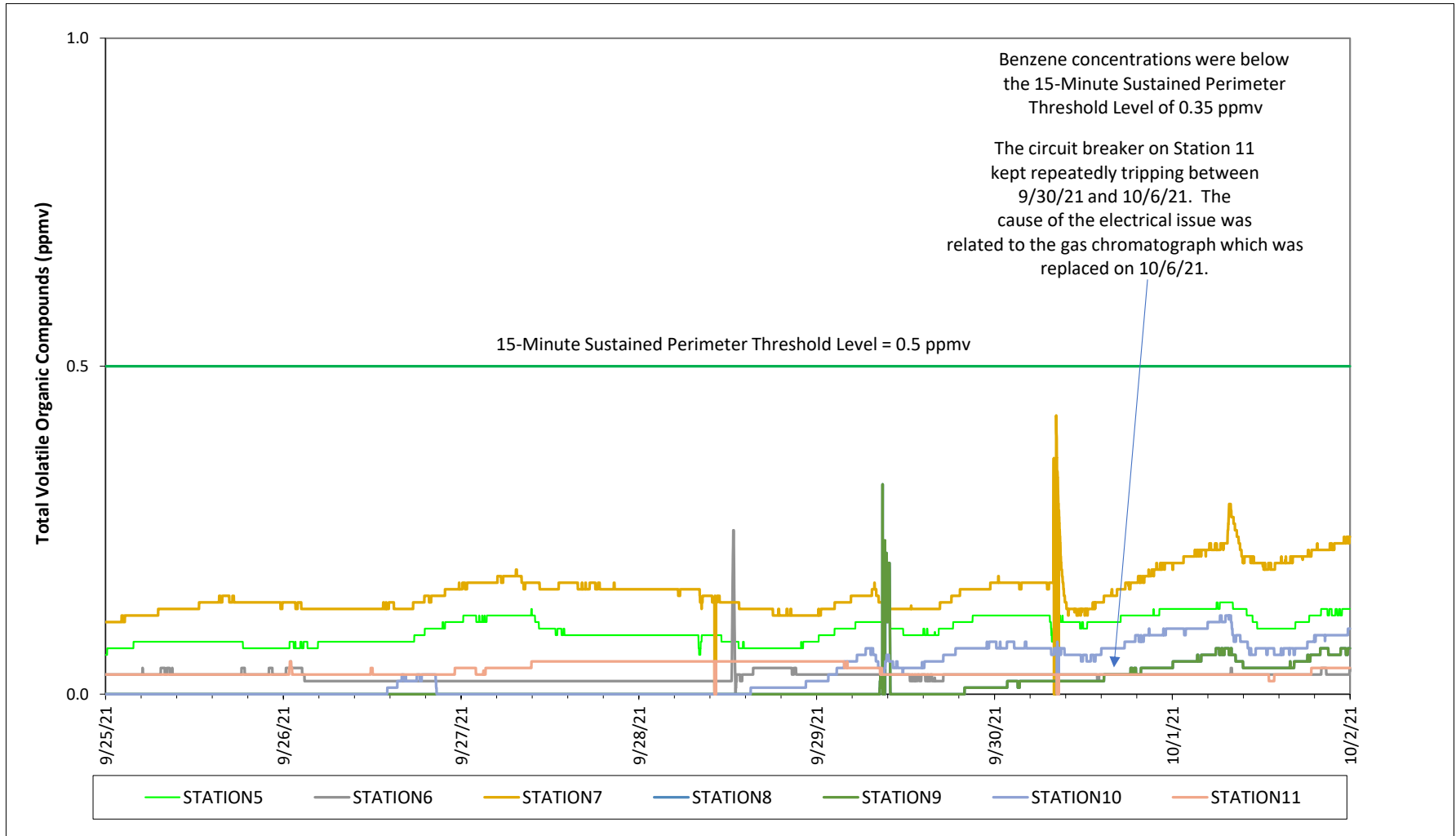
Prepared by National Grid for the Businesses and Residents Located Near the Former Tidewater Facility

Air Quality Monitoring - Total Volatile Organic Compounds

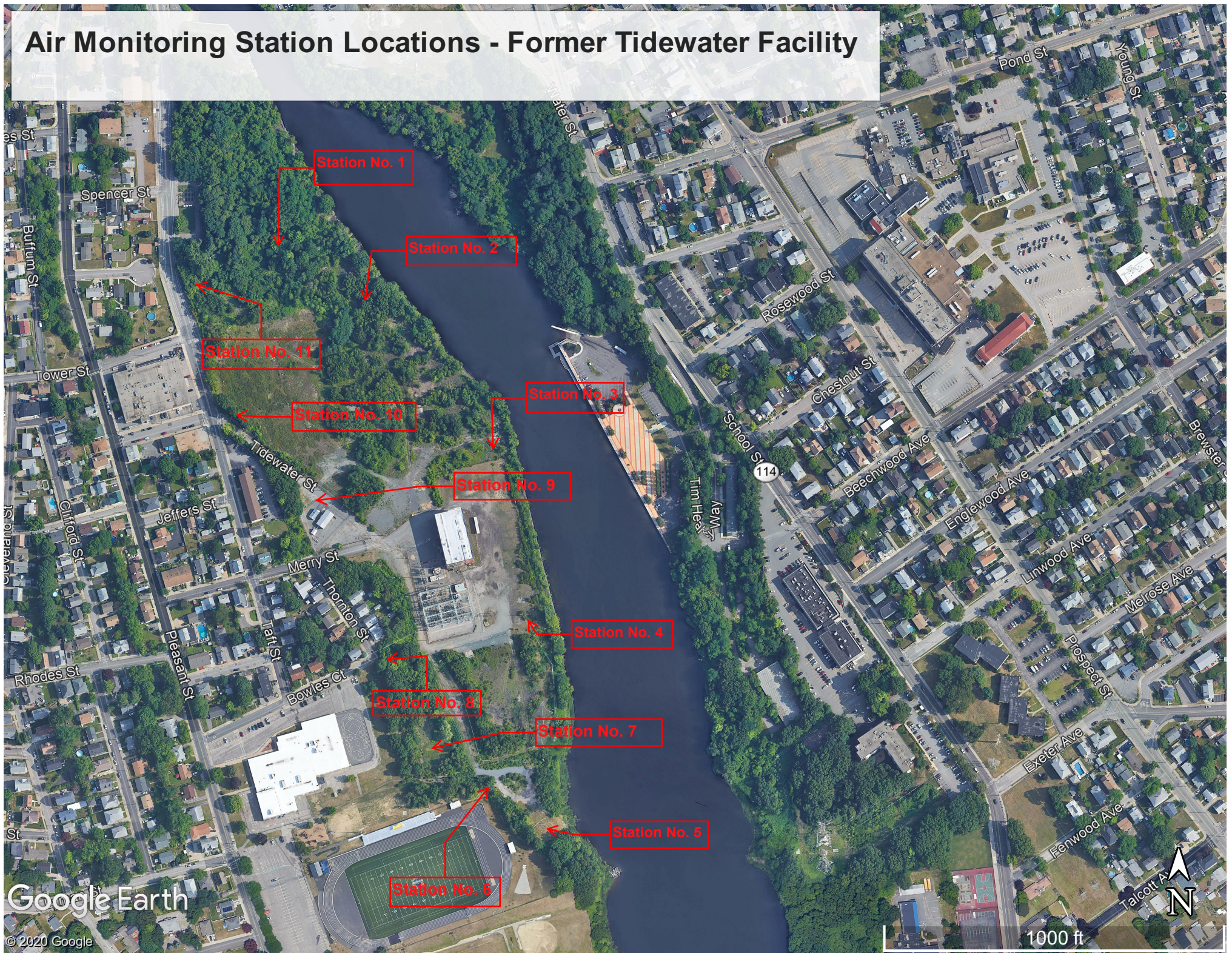


Prepared by National Grid for the Businesses and Residents Located Near the Former Tidewater Facility

Air Quality Monitoring - Total Volatile Organic Compounds



Air Monitoring Station Locations - Former Tidewater Facility



Google Earth

© 2020 Google

1000 ft



**Prepared by National Grid for the Businesses and Residents Located Near the Former Tidewater Facility
Weekly Ambient Air Sampling Results**

Sample Date	Compounds				
	Benzene	Toluene	Ethylbenzene	Total Xylenes	Naphthalene
	(ppb v/v)				
12-3-20 UP STREAM	0.13	0.22	0.079	0.054	< 0.5
12-3-20 DOWN STREAM	0.13	0.2	0.073	0.05	< 0.5
12-10-20 UP STREAM	0.25	0.23	< 0.2	0.14	< 0.5
12-10-20 DOWN STREAM	0.17	0.2	< 0.2	< 0.7	< 0.5
12-16-20 UP STREAM	0.19	0.2	0.083	0.12	< 0.5
12-16-20 DOWN STREAM	0.13	0.16	0.078	0.094	< 0.5
12-23-20 UP STREAM	0.15	0.16	< 0.2	0.1	< 0.5
12-23-20 DOWN STREAM	0.13	0.11	< 0.2	< 0.7	< 0.5
12-30-20 UP STREAM	0.21	0.22	< 0.2	< 0.7	< 0.5
12-30-20 DOWN STREAM	0.089	< 0.2	< 0.2	< 0.7	< 0.5
1/7/21 UP STREAM	0.29	1.5	0.22	2.1	< 0.5
1/7/21 DOWN STREAM	0.16	0.27	0.086	0.42	< 0.5
1/14/21 UP STREAM	0.43	0.44	< 0.2	0.23	< 0.5
1/14/21 DOWN STREAM	0.4	0.52	0.076	0.3	< 0.5
1-21-21 UPSTREAM	0.15	0.28	0.1	< 0.7	0.24
1-21-21 DOWNSTREAM	0.18	0.23	0.11	0.1	< 0.5
1-28-21 UPSTREAM	0.21	0.19	< 0.2	< 0.7	< 0.5
1-28-21 DOWNSTREAM	0.21	0.17	< 0.2	< 0.7	< 0.5
2-4-21 UPSTREAM	0.2	1.1	0.23	1.4	0.18
2-4-21 DOWNSTREAM	0.23	0.29	0.26	0.29	< 1.1
2-11-21 UPSTREAM	0.19	0.12	< 0.2	< 0.7	< 0.5
2-11-21 DOWNSTREAM	0.17	< 0.2	< 0.2	< 0.7	< 0.5
2-18-21 UPSTREAM	0.46	2.8	0.11	0.25	< 0.5
2-18-21 DOWNSTREAM	0.31	0.42	0.13	0.45	< 0.5
2-25-21 UPSTREAM	< 0.2	0.16	< 0.2	0.16	< 0.5
2-25-21 DOWNSTREAM	0.13	< 0.2	0.081	0.3	< 0.5
3-4-21 UPSTREAM	0.2	0.21	< 0.2	0.18	0.27
3-4-21 DOWNSTREAM	0.15	0.12	< 0.2	0.16	< 0.5
3-11-21 UPSTREAM	0.18	0.17	< 0.2	0.23	0.3
3-11-21 DOWNSTREAM	0.18	0.22	0.23	1.0	< 0.5
3-18-21 DOWNSTREAM	0.44	1.6	0.19	0.67	< 0.5
3-25-21 UPSTREAM	0.17	0.32	0.85	4.1	0.53
3-25-21 DOWNSTREAM	0.33	0.67	0.16	0.57	0.27
4-1-21 UPSTREAM	0.22	0.17	< 0.2	< 0.7	< 0.5
4-1-21 DOWNSTREAM	0.12	0.11	< 0.2	< 0.7	< 0.5
4-8-21 UPSTREAM	0.096	0.12	1.5	8.0	< 0.5
4-8-21 DOWNSTREAM	0.086	0.14	0.086	0.38	0.19
4-15-21 UPSTREAM	0.85	0.57	0.1	0.44	< 0.5
4-15-21 DOWNSTREAM	0.11	0.11	0.26	1.20	< 0.5
4-22-21 UPSTREAM	0.11	< 0.2	< 0.2	< 0.7	< 0.5
4-22-21 DOWNSTREAM	0.11	0.16	< 0.2	< 0.7	< 0.5
4-29-21 UPSTREAM	0.14	0.34	0.11	0.32	0.26
4-29-21 DOWNSTREAM	0.19	0.39	0.11	0.37	0.27
5-6-21 UPSTREAM	0.086	0.15	< 0.2	< 0.7	0.38
5-6-21 DOWNSTREAM	1.0	8.4	0.21	0.69	< 0.5
5-13-21 UPSTREAM	< 0.2	0.36	< 0.2	0.19	0.34
5-13-21 DOWNSTREAM	0.12	< 0.2	< 0.2	< 0.7	< 0.5
5-20-2021 UPSTREAM	0.38	2.5	< 0.2	< 0.7	< 0.5
5-20-2021 DOWNSTREAM	0.16	0.56	0.3	1.40	< 0.5
Project Action Levels	6.2	80	230	23	20

**Prepared by National Grid for the Businesses and Residents Located Near the Former Tidewater Facility
Weekly Ambient Air Sampling Results**

Sample Date	Compounds				
	Benzene	Toluene	Ethylbenzene	Total Xylenes	Naphthalene
(ppb v/v)					
5-27-21 UPSTREAM	0.095	0.12	0.45	2.10	0.4
5-27-21 DOWNSTREAM	0.075	0.094	< 0.2	< 0.7	< 0.5
6-3-21 UPSTREAM	< 0.2	0.16	< 0.2	< 0.7	< 0.5
6-3-21 DOWNSTREAM	0.075	0.11	< 0.2	< 0.7	< 0.5
6-10-21 UPSTREAM	< 0.2	< 0.2	< 0.2	< 0.7	< 0.5
6-10-21 DOWNSTREAM	< 0.2	< 0.2	< 0.2	< 0.7	< 0.5
6-17-21 UPSTREAM	0.64	0.6	0.48	0.66	0.64
6-17-21 DOWNSTREAM	0.12	0.12	0.16	< 0.7	< 0.5
6-24-21 UPSTREAM	< 0.2	0.17	< 0.2	< 0.7	< 0.5
6-24-21 DOWNSTREAM	< 0.2	0.45	0.19	0.82	< 0.5
7-1-21 UPSTREAM	1.10	7.9	0.12	0.39	< 0.7
7-1-21 DOWNSTREAM	0.13	0.74	< 0.2	0.29	< 0.7
7-8-21 UPSTREAM	< 0.2	0.29	< 0.2	0.38	0.29
7-8-21 DOWNSTREAM	< 0.2	< 0.2	< 0.2	< 0.7	< 0.5
7-15-21 UPSTREAM	0.10	0.28	< 0.2	0.32	< 0.5
7-15-21 DOWNSTREAM	0.14	0.37	0.31	1.5	< 0.5
7-22-21 UPSTREAM	0.27	0.3	< 0.2	< 0.7	< 0.5
7-22-21 DOWNSTREAM	0.30	0.33	< 0.2	< 0.7	< 0.5
7-29-21 UPSTREAM	0.22	0.26	0.1	0.56	0.19
7-29-21 DOWNSTREAM	0.099	0.23	< 0.2	< 0.7	< 0.5
8-5-21 UPSTREAM	0.70	1.2	< 0.2	0.17	< 0.5
8-5-21 DOWNSTREAM	0.310	0.53	< 0.25	< 0.88	< 0.63
8-12-21 UPSTREAM	0.19	0.18	< 0.2	< 0.7	0.2
8-12-21 DOWNSTREAM	1.2	0.7	< 0.2	0.31	< 0.5
8-19-21 UPSTREAM	0.66	6.2	1.2	3.50	< 1.6
8-19-21 DOWNSTREAM	0.21	0.24	< 0.2	0.11	< 0.5
8-26-21 UPSTREAM	0.34	0.73	0.22	0.90	0.18
8-26-21 DOWNSTREAM	0.34	0.63	0.24	0.87	0.31
9-1-21 UPSTREAM	0.17	0.34	< 0.2	< 0.7	< 0.5
9-1-21 DOWNSTREAM	0.18	0.35	< 0.2	0.19	< 0.5
9-9-21 UPSTREAM	0.12	0.22	< 0.2	0.28	< 0.5
9-9-21 DOWNSTREAM	< 0.2	0.89	< 0.2	< 0.7	0.42
9-16-21 UPSTREAM	0.14	0.26	0.11	0.31	0.3
9-16-21 DOWNSTREAM	0.11	0.26	< 0.2	0.28	< 0.5
9-23-21 UPSTREAM	< 0.2	0.12	< 0.2	< 0.7	< 0.5
9-23-21 DOWNSTREAM	< 0.2	0.12	< 0.2	< 0.7	< 0.5
9-30-21 UPSTREAM	0.17	0.37	0.23	0.66	< 0.51
9-30-21 DOWNSTREAM	0.086	0.21	< 0.2	< 0.7	< 0.5
Project Action Levels	6.2	80	230	23	20

Notes:

1. The Project Action Levels are consistent with the Air Quality Monitoring Plan developed for the Site.
2. Air samples are collected in stainless steel summa canisters over an approximately 8-hour period.
3. Air samples are analyzed by EuroFins TestAmerica of Burlington, VT.
4. Results and action levels are listed in parts per billion volume/volume (ppb v/v).
5. An upstream ambient air sample was not collected on March 18, 2021 due to a problem with the sampling equipment.