



STATE OF RHODE ISLAND DEPARTMENT OF ENVIRONMENTAL MANAGEMENT  
BUREAU OF ENVIRONMENTAL PROTECTION  
OFFICE OF THE DIRECTOR  
235 Promenade Street, Room 425  
Providence, RI 02908-5767

May 13, 2024

The Honorable Daniel McKee  
Governor, State of Rhode Island  
Executive Chambers  
State House  
Providence, RI 02903

Dear Governor McKee:

Enclosed is the 2023 Annual Report on the activities of the Department of Environmental Management (DEM) pertaining to dam safety, as required by Chapter 46-19 of the Rhode Island General Laws.

Under this chapter, DEM is responsible for causing dams to be inspected to determine their condition, reviewing and approving plans for construction or substantial alteration of a dam, ordering repairs or other action to address unsafe conditions and submitting an annual report.

If there are any questions or concerns, please contact David E. Chopy, Administrator of DEM's Office of Compliance & Inspection at [david.chopy@dem.ri.gov](mailto:david.chopy@dem.ri.gov) or at 537-4442.

Sincerely,

A handwritten signature in blue ink, appearing to read "S. Forcier".

Susan Forcier,  
Deputy Director of Environmental Protection

encls: 2023 Annual Report  
List of Regulated Dams

ec: The Honorable K. Joseph Shekarchi, Speaker of the House  
The Honorable Christopher R. Blazewski, House Majority Leader  
The Honorable Michael W. Chippendale, House Minority Leader  
The Honorable Dominick J. Ruggerio, Senate President  
The Honorable Ryan W. Pearson, Senate Majority Leader  
The Honorable Jessica de la Cruz, Senate Minority Leader



# STATE OF RHODE ISLAND

Department of Environmental Management

2023 Annual Report to the Governor  
on the Activities of the

## DAM SAFETY PROGRAM



**Butterfly Pond Dam (No. 097), Lincoln**  
Photo taken by PARE Inspection - May 11, 2023

Prepared by the  
Office of Compliance and Inspection

## Table of Contents

<b>EXECUTIVE SUMMARY .....</b>	<b>3</b>
<b>INTRODUCTION.....</b>	<b>6</b>
<b>STATUTORY AUTHORITY AND HISTORY OF DAM SAFETY IN RHODE ISLAND ....</b>	<b>6</b>
<b>CURRENT STATUTES.....</b>	<b>7</b>
<b>FEDERAL ENERGY REGULATORY COMMISSION AUTHORITY .....</b>	<b>8</b>
<b>REGULATIONS PERTAINING TO DAM SAFETY .....</b>	<b>9</b>
<b>HAZARD CLASSIFICATIONS.....</b>	<b>9</b>
<b>INSPECTION PROGRAM.....</b>	<b>11</b>
<b>ACTIVITIES IN 2023 .....</b>	<b>12</b>
<i>UNSAFE DAMS WITH KNOWN OWNERS .....</i>	<i>12</i>
<i>POTENTIALLY UNSAFE DAMS WITH KNOWN OWNERS.....</i>	<i>21</i>
<i>UNSAFE DAMS WITH UNKNOWN OWNERS.....</i>	<i>24</i>
<i>POTENTIALLY UNSAFE DAMS WITH UNKNOWN OWNERS .....</i>	<i>24</i>
<i>COMPLIANCE INSPECTIONS .....</i>	<i>25</i>
<i>High Hazard Dam Inspections .....</i>	<i>25</i>
<i>Significant Hazard Dam Inspections.....</i>	<i>26</i>
<i>Requested Inspections .....</i>	<i>27</i>
<i>REPAIR APPROVALS.....</i>	<i>27</i>
<i>OWNER / CONTACT INFORMATION.....</i>	<i>28</i>
<i>Orphan Dams.....</i>	<i>29</i>
<i>Registration.....</i>	<i>29</i>
<i>REMOVALS.....</i>	<i>29</i>
<i>GRANTS TO THE DEPARTMENT OF ENVIRONMENTAL MANAGEMENT .....</i>	<i>29</i>
<i>INTERAGENCY COORDINATION.....</i>	<i>30</i>
<i>MEETING/SEMINAR ATTENDANCE .....</i>	<i>30</i>
<i>STATE OWNED DAMS .....</i>	<i>31</i>
<i>EMERGENCY ACTION PLANS .....</i>	<i>32</i>
<i>DAM MANAGEMENT DISTRICTS .....</i>	<i>35</i>
<b>PROFESSIONAL ASSOCIATIONS.....</b>	<b>35</b>
<b>PROGRAM CHALLENGES.....</b>	<b>35</b>
<i>UNCLEAR OWNERSHIP .....</i>	<i>35</i>
<i>INSPECTIONS OF HIGH HAZARD AND SIGNIFICANT HAZARD DAMS.....</i>	<i>36</i>
<i>CONSTRUCTION OF BUILDINGS WITHIN INUNDATION AREAS BELOW DAMS .....</i>	<i>36</i>
<i>FUNDING TO REPAIR OR REMOVE PRIVATELY OWNED DAMS.....</i>	<i>36</i>
<i>INADEQUATE SPILLWAY CAPACITIES AND ENGINEERING ANALYSES .....</i>	<i>36</i>
<i>LACK OF EMERGENCY ACTION PLANS .....</i>	<i>37</i>
<i>STAFFING.....</i>	<i>38</i>
<i>INTENSE RAINSTORMS .....</i>	<i>38</i>
<i>LOW HAZARD DAMS THAT REQUIRE RECLASSIFICATION .....</i>	<i>39</i>

## **EXECUTIVE SUMMARY**

Rhode Island General Laws, Chapter 46-19, makes the Department of Environmental Management (DEM) responsible for causing dams to be inspected to determine their condition, reviewing and approving plans for repair, new construction or substantial alteration of a dam, ordering repairs or other action to address unsafe conditions and submitting an annual report of its activities to the Governor. To meet that mandate, DEM established the Dam Safety Program, which is housed in the Bureau of Environmental Protection within the Office of Compliance & Inspection.

The statute provides the authority for Rhode Island's *Rules and Regulations for Dam Safety* (250-RICR-130-05-1). According to the regulations and underlying statute, dam owners are responsible for keeping dams in a safe condition and may be liable for damage resulting from dam failure or misoperation.

In 2023, DEM's focus continued to be addressing unsafe High Hazard dams and Significant Hazard dams. DEM issued three formal notices for unsafe conditions and four informal notices for potentially unsafe conditions to the owners of the dams. Three unsafe dams were satisfactorily addressed. At the end of 2023, there were thirty-three unsafe dams and eleven potentially unsafe dams with known owners, thirty-three unsafe dams with unknown owners and two unsafe dams determined to be orphans.

The program was significantly hampered by the loss of a dam engineer in July (this engineer and one other engineer manage the day to day program). DEM attempted to hire a new engineer, but we were unable to find a qualified candidate for the pay scale offered. The position was modified and the program is now fully staffed with a new Environmental Scientist I.

Dam inspections were completed for thirty-five High Hazard dams and seven Significant Hazard dams.

There are six hundred seventy inventoried dams in Rhode Island, which are classified as High Hazard, Significant Hazard, or Low Hazard. The classifications are based on the downstream impacts expected to occur if the dam failed. Inspection frequency varies based on the classification of the dam. In addition to this classification, dams are also rated by condition as Good, Fair, Poor, Unsafe or May Be Unsafe following a visual inspection. **The highest priority dams are unsafe High Hazard dams, of which there are forty-four.**

Category	Description	Inspection timeline	# of dams in category	# of unsafe dams in category
High Hazard	Failure or misoperation will result in a probable loss of human life.	2 years	95	31
Significant Hazard	Failure or misoperation will likely not result in loss of human life, but will cause major economic loss, disruption of lifeline facilities, or impact other concerns detrimental to the public's health, safety, or welfare.	5 years	81	37
Low Hazard	Failure or misoperation will not likely result in loss of human life or cause major economic loss.	5 years <sup>1</sup>	494	N/A – not inspected

The thirty-one unsafe High Hazard dams span a range of owners and, thus, compliance actions:

Owner	# of unsafe High Hazard dams	Action to date
State (DEM)	3	Three dams are in-progress (e.g., engineering or construction)
Municipal and Water Suppliers	6	Notices of Violation issued against all owners. Dams in Coventry and Newport are progressing towards compliance. Dams in Johnston are not progressing. <sup>2</sup>
Known Private Owner	9	Notices of Violation issued against all owners. Filed complaints in court against owners of five dams. Of the four remaining dams, two owners have made some progress towards compliance, one owner is nonresponsive, and DEM filed an appeal of a decision by DEM's hearing officer in favor of the owner to court.
Unknown Owner	13 (two confirmed orphan <sup>3</sup> )	DEM has tried to retain a contract attorney to do title work, but no attorney has been interested

<sup>1</sup> Low Hazard dams are not inspected; rather, downstream conditions are reassessed to determine if conditions have changed to necessitate a reclassification of the dam.

<sup>2</sup> For Almy Reservoir Dam, the Town indicated that it believes it does not own the entire dam, but DEM determined the Town does own the entire dam. For Simmons Upper Reservoir Dam, the Town has informally proposed to demonstrate to DEM that the dam should be classified as a Low Hazard dam. For Simmons Lower Reservoir Dam, the Town indicated that it believes the dam should be classified as a Low Hazard dam, but has not provided sufficient documentation to DEM's satisfaction to support its position.

<sup>3</sup> An *orphan* dam is one which has been confirmed through a title search to have no legal owner. For these dams, the State (through DEM) may assume responsibility for ensuring the safety of the dam.

A separate, but related, issue concerns emergency preparedness for High Hazard and Significant Hazard dams. Rhode Island General Laws Section 46-19-9 requires the municipality where each dam is located to complete an EAP and update the approved EAPs annually. The deadline in the statute is July 1, 2008. RIEMA is responsible for working with municipalities to complete these EAPs. However, RIEMA has only received and approved EAPs for seventy-seven total dams (including five of thirty-one unsafe High Hazard dams). The approved EAPs include all fourteen DEM owned dams. In July 2022, an amendment to this statute was passed which allows the DEM to assess an administrative penalty for failure to submit an EAP. In Fall 2022, DEM issued letters to each city and town advising them of the amendment and included a list of dams in their jurisdiction which do not have approved EAPs. In Fall 2023, DEM and RIEMA held an EAP workshop for the cities/towns to assist with completing EAPs. In the workshop, DEM made clear that it would begin to issue penalties in 2024 to cities and towns that have not submitted the EAPs.

DEM reviewed and approved a plan to repair one High Hazard dam. No repair applications were received for Significant Hazard Dams.

DEM is responsible for addressing unsafe conditions at High Hazard and Significant Hazard dams owned by DEM. DEM's Division of Planning and Development completed repairs on one dam and made progress on three dams with unsafe conditions.

*Program Challenges* (pages 35-39) discusses the issues that need to be addressed for DEM to meet its responsibilities.

A more detailed summary of the issues follows.

## **INTRODUCTION**

The Department of Environmental Management (DEM) is responsible for ensuring the safety of dams in Rhode Island. To meet that mandate, DEM established the Dam Safety Program, which is housed in the Bureau of Environmental Protection within the Office of Compliance and Inspection.

A core statutory requirement for DEM is to ensure that every dam in the State is inspected as often as may be necessary to keep informed of the condition. Additionally, the statute requires DEM to submit an annual report on the activities of the program to the Governor.

The increased frequency of high intensity storms resulting from climate change is requiring a new look at the adequacy of the structures of the dams. The impacts of these storms on the storage capacity and spillway capacities must be evaluated.

## **STATUTORY AUTHORITY AND HISTORY OF DAM SAFETY IN RHODE ISLAND**

As was the case for several New England states, Rhode Island's Commission of Dams and Reservoirs was created in the wake of the Mill River Flood of 1874. This flood occurred above the western Massachusetts towns of Williamsburg and Northampton. It was the first major dam disaster in the United States, and one of the greatest calamities of the nineteenth century. It happened when a reservoir dam (used for waterpower) suddenly burst, sending an avalanche of water down a narrow valley lined with factories and farms. Within an hour, one hundred thirty-nine people were dead, and four mill villages were washed away. The Mill River flood instantly became a big news story.<sup>4</sup>

The position of Commissioner of Dams and Reservoirs was created in 1882. The statute required that the appointee be a "competent civil engineer." It directed the Commissioner to make an inspection of all dams and reservoirs in the state to determine their condition. The law also required that the Commission keep records of its inspections. Dam owners were expected to cooperate with the Commissioner by filing plans for the construction or improvement of dams on their property, or to provide descriptions of their dams upon the request of the commission. The Commission could also require owners of dams and reservoirs to take appropriate action where the structure was deemed insufficient to contain the water. The Commission operated as an independent agency until 1935.<sup>4</sup>

The Department of Public Works was created in 1935 as part of a major state government reorganization. The statute created a Division of Roads and Bridges, a Division of State Airports, a Division of Harbors and Rivers, and a Division of Public Buildings. The functions of the Commission of Dams and Reservoirs were transferred to the newly-created Division of Harbors and Rivers.<sup>4</sup>

---

<sup>4</sup> History obtained from the Rhode Island Department of State Division of State Archives, State Library, and Public Information website.

In 1965, the Division of Harbors and Rivers was transferred from the Department of Public Works to the new Department of Natural Resources.<sup>5</sup>

The Department of Natural Resources remained until 1977, when the Department of Environmental Management (DEM) was created to incorporate all the responsibilities relating to the environment in one department. DEM took over the responsibilities of the Department of Natural Resources.<sup>5</sup>

When the Commission of Dams and Reservoirs was created, there were eighty-six dams included in the records; today, there are six hundred seventy inventoried dams.

A complete list of the inventoried dams, sorted by town, is attached.

### **CURRENT STATUTES**

The authority governing the administration and enforcement of dam safety are contained in the General Laws of Rhode Island, Chapter 46-19 (Inspections of Dams and Reservoirs). The Department of Environmental Management (DEM) has the responsibility to cause to be inspected dams to determine their condition, to review and approve plans for repair, new construction or substantial alteration of a dam, to order the owner to make repairs or to take other necessary action to make a dam safe.

As set forth in Rhode Island law, including Rhode Island General Laws, Chapters 46-18 (Damages from Milldams) and 46-19, a dam owner has the responsibility for the safe operation of the dam and may be liable for the consequences of accidents or failures of the dam. In general, a dam owner is required to use “*reasonable care*” in the operation and maintenance of a dam. This responsibility includes the proper operation, maintenance, repair and rehabilitation of a dam, which are essential elements in preventing a dam failure.

In 2001, Section 46-12.2 (Rhode Island Infrastructure Bank), subsection 2, was amended, authorizing the Clean Water Finance Agency, now known as the Rhode Island Infrastructure Bank, to issue loans for projects associated with dam safety.

In 2005, Chapter 45-62 (Dam Management Districts) was added, authorizing municipalities to create dam management districts for dam repairs, maintenance, management and/or removal. Dam management districts may be created by municipal ordinance to establish independent organizations to manage dams and provide for dam safety. The purpose of the districts is to prevent threats to public safety and public and private property caused by the failure or breach of dams and to protect the values associated with dams through the implementation of dam repairs, maintenance, management and/or removal.

---

<sup>5</sup> History obtained from the Rhode Island Department of State Division of State Archives, State Library, and Public Information website.



In 2006, two amendments to Chapter 46-19 were enacted. Subsection 4 was added to authorize DEM, in an emergency, to take necessary actions to mitigate an unsafe condition at a dam and to assess the costs of those actions against the dam owner. Subsection 9 was added to require a city or town where a High Hazard or Significant Hazard dam is located, and to require a state agency that owns a High Hazard or Significant Hazard dam, to complete by July 1, 2008, an Emergency Action Plan (EAP) for the dam. The Rhode Island Emergency Management Agency (EMA) is responsible for coordinating development of the EAPs and must give final approval for the EAP to be considered complete.

In 2012, Section 46-19-4 (Investigations and orders as to unsafe dams and reservoirs) was amended by adding subsection (c) authorizing DEM to record an enforcement action for an unsafe dam in the land evidence records of the city or town in which the dam is located. Upon satisfactory completion of the requirements of the enforcement action, DEM is also authorized to record such written notice in the land evidence records.

In 2022, Section 46-19-9 (Emergency action plans) was amended by adding subsection (f) authorizing DEM to assess an administrative penalty for failure to comply with subsections (a), (b), (c), and (e) of this section and adding subsection (g) requiring DEM and EMA to establish a notification system for dams in the event of severe weather conditions. Also, Section 23-27.3-100.1.5.5 (Hurricane, storm and flood standards), was amended to include inundation areas below dams classified by DEM as High Hazard, Significant Hazard or Low Hazard to be taken into account, to the extent reasonable and feasible, by the state building code standard committee in the code provisions.

**FEDERAL ENERGY REGULATORY COMMISSION AUTHORITY**

The Department of Environmental Management does not have dam safety regulatory authority for any dam that has a Federal Energy Regulatory Commission (FERC) Permit or Exemption. The following eight dams are currently under FERC Authority:

<b>TOWN</b>	<b>DAM NO.</b>	<b>DAM NAME</b>	<b>HAZARD CLASS</b>
Central Falls / Cumberland	063	Valley Falls Pond	Low
Central Falls / Pawtucket	064	Central Falls	Low
Cumberland / Lincoln	060	Albion	Low
North Smithfield	393	Blackstone	Low
Pawtucket	066	Pawtucket Lower	Low
West Warwick	145	Natick	High
West Warwick	147	Riverpoint Pond Upper	High
Woonsocket	056	Woonsocket Falls	Significant

## **REGULATIONS PERTAINING TO DAM SAFETY**

In December 2007, Rhode Island's *Rules and Regulations for Dam Safety* (250-RICR-130-05-1) (Dam Safety Regulations) went into effect. The regulations, which are available on the Rhode Island Secretary of State website at <https://rules.sos.ri.gov/regulations/part/250-130-05-1>, include the following:

- Definitions of important terms including dam, hazard classifications, maintenance, repair and unsafe dam.
- Assignment of a hazard classification to each dam in the state inventory.
- Requirement that owners register their dams and notify DEM when ownership is transferred (no associated fee).
- Schedule for visual inspections of high and significant hazard dams.
- Procedure to streamline repair of high and significant hazard dams (no associated permit fee).
- Procedure for dam owners to take emergency actions at high and significant hazard dams.

In June 2007, Rhode Island's *Rules and Regulations Governing the Administration and Enforcement of the Freshwater Wetlands Act* (250-RICR-150-15-1) were amended to allow High Hazard and Significant Hazard dam repair requests to be approved under the Dam Safety Regulations. The Dam Safety Program coordinates such requests with the Freshwater Wetlands Program. The wetland regulations are available on the Rhode Island Secretary of State website at <https://rules.sos.ri.gov/Regulations/Part/250-150-15-3>.

In June 2020, the Dam Safety Regulations were amended to provide a definition of Control Structure and to add the word inoperable to clarify the definition of an unsafe dam.

## **HAZARD CLASSIFICATIONS**

Inventoried dams are classified by the hazard, which relates to the probable consequences of failure or misoperation of the dam. **It does not relate to the current condition of the dam or the likelihood of failure of the dam.** The hazard classifications are defined in Rhode Island's *Rules and Regulations for Dam Safety* (250-RICR-130-05-1) as follows:

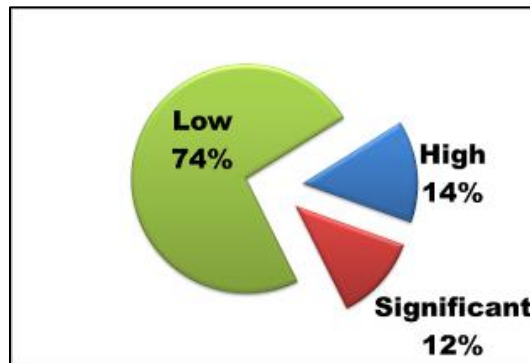
*High Hazard* – means a dam where failure or misoperation will result in a probable loss of human life.

*Significant Hazard* – means a dam where failure or misoperation results in no probable loss of human life but can cause major economic loss, disruption of lifeline facilities or impact other concerns detrimental to the public's health, safety or welfare. Examples of major economic loss include washout of a state or federal highway, washout of two or more municipal roads, loss of vehicular access to residences, (e.g. a dead end road whereby emergency personnel could no longer access residences beyond the washout area) or damage to a few structures.

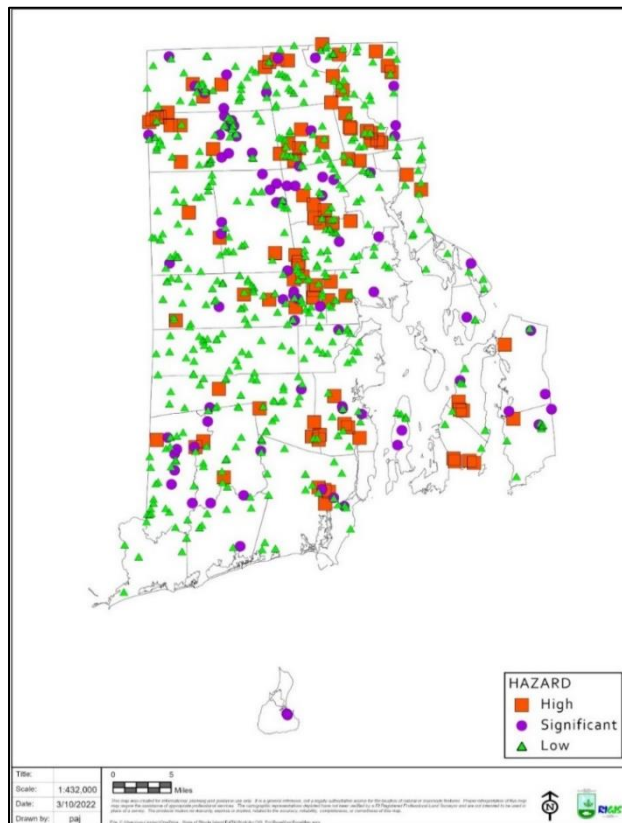
*Low Hazard* – means a dam where failure or misoperation results in no probable loss of human life and low economic losses.

There are ninety-five High Hazard dams, eighty-one Significant Hazard dams and four hundred ninety-four Low Hazard dams, for a total inventory of six hundred seventy dams.

The following chart illustrates the percentage of dams in each hazard classification:



The map below shows the location of each dam by hazard class throughout the State.  
*Dams / Hazard Classifications*



## **INSPECTION PROGRAM**

In accordance with Rhode Island's *Rules and Regulations for Dam Safety* (250-RICR-130-05-1), a dam's hazard classification determines the inspection frequency. Visual inspections of High Hazard dams are required every two years and visual inspections of Significant Hazard dams are required every five years. Low Hazard dams are required to be evaluated every five years to determine whether downstream conditions have changed over time that warrant raising the hazard classification to Significant Hazard or High Hazard. Also, the Department of Environmental Management (DEM) will visually inspect a High Hazard or Significant Hazard dam whenever DEM has reason to believe that the dam may be unsafe.

The visual inspections performed are conducted under a general inspection format based on guidelines established in 1976 by the United States Army Corps of Engineers for the National Program for the Inspection of (Non-Federal) Dams. A visual inspection may be performed by DEM, by an engineer hired by DEM, or by an engineer hired by the dam owner.

As part of each visual inspection, the condition of the major components of the dam are subjectively rated as *Good, Fair, Poor, Unsafe or May Be Unsafe*. The major components of a dam are the embankment, the spillway and the low level outlet. *Good* is defined as meeting minimum guidelines, where no irregularities are observed and the component appears to be maintained properly. *Fair* is defined as a component that requires maintenance. *Poor* is defined as a component that has deteriorated beyond a maintenance issue and requires repair or the component no longer functions as it was originally intended. *Unsafe* means the condition of a regulated dam, as determined by DEM, is such that an unreasonable risk of failure exists that will result in a probable loss of human life or major economic loss. Among the conditions that would result in this determination are: excessive vegetation that does not allow DEM to perform a complete visual inspection of a dam, excessive seepage or piping, significant erosion problems, inadequate spillway capacity, inadequate capacity and/or condition of control structure(s) or serious structural deficiencies, including movement of the structure or major cracking. *May Be Unsafe* means DEM believes that a condition is present that may affect the safety of the dam.

A detailed investigation may be required if a visual inspection leads to a determination that a dam is *Unsafe* or *May Be Unsafe*. A detailed investigation may include studies, investigations and analyses appropriate to evaluate the structural safety and hydraulic capacity of a dam or reservoir and appurtenant works, such as soil analysis, concrete or earth stability analysis, materials testing, foundation explorations, hydraulic and hydrologic analysis, including basin studies, flood potential, and an analysis of the dam's ability to pass flood waters.

Following a visual inspection performed by DEM, a dam inspection report is prepared, identifying specific deficiencies and, when warranted, recommending corrective measures. A copy of the report is forwarded to the owner, along with any requirements or orders for further action.

**ACTIVITIES IN 2023**

**UNSAFE DAMS WITH KNOWN OWNERS**

Three dams with unsafe conditions were properly addressed, and the dams returned to compliance (shaded in green below). At the end of 2023, thirty three dams with unsafe conditions need to be addressed.

TOWN	DAM NO.	DAM NAME	HAZARD CLASS	UNSAFE CONDITION(S)	OWNER
Burrillville	003	Wilson	High	Vegetation prohibited inspection, embankment movement	Wilson Reservoir Association
Burrillville	027	Sucker	Significant	Vegetation prohibited inspection, plywood blocked spillway, low level outlet inoperable, auxiliary spillway modified	Bliss Golf Investors LLC
Burrillville	565	Ross	Significant	Vegetation prohibited inspection, low level outlet inoperable	Department of Transportation
Burrillville	572	Wilbur	High	Vegetation prohibited inspection, spillway headwall & seepage, low level outlet operability	Tillinghast Holding Co., LLC
Coventry	176	Coventry Reservoir	High	Inoperable low level outlet	Town of Coventry
Coventry	371	Pearce Pond	High	Vegetation prohibited complete inspection & inoperable low level outlet	Georges Bockstael
Coventry	498	Hopkins Farm	Significant	Raised spillway crest, auxiliary spillway partially filled	Jeremy Votolato, dba Island Green Golf, LLC
Coventry	645	Centre of New England #1	Significant	Vegetation prohibited inspection, spillway movement & debris impacting flow	Commerce Park Properties, LLC
Cranston	198	Curran Lower	High	Vegetation prohibited inspection, vegetation in spillway inhibited flow, low level outlet inoperable	Department of Environmental Management
Cranston	320	Stone	High	Vegetation prohibited inspection, vegetation inhibited spillway flow, embankment movement & seepage. Action was taken by one of the owners to address the unsafe conditions.	Richard A. & Kathleen M. Fenner; Pauline E. Grieco
Exeter	221	Browning	Significant	Vegetation prohibited inspection, vegetation may be impacting flow	Department of Environmental Management

<b>TOWN</b>	<b>DAM NO.</b>	<b>DAM NAME</b>	<b>HAZARD CLASS</b>	<b>UNSAFE CONDITION(S)</b>	<b>OWNER</b>
Exeter	238	Edward's	Significant	Vegetation prohibited inspection	Peter C. Hendrick Revocable Trust
Foster	349	Spear	High	Vegetation prohibited inspection, low level outlet inoperable, failed downstream wall, eroded spillway	Frederick W. Knier, Paul H. Knier
Foster	526	Gorham	Significant	Low Level Outlet operability unknown	Foster Land Trust
Glocester	018	Burlingame	High	Vegetation prohibited inspection, inadequate erosion protection	Department of Environmental Management
Glocester	354	Coomer	Significant	Vegetation prohibited inspection, inoperable low level outlet, severe embankment erosion	Providence Water Supply Board; City of Providence
Glocester	555	Hawkins	High	Deteriorated spillway	Glocester Land Trust
Glocester	727	Bowdish Lower	High	Vegetation prohibited inspection, debris obstructing spillway, low level outlet operability unknown	Lynda Jean Marshall, a/k/a Lynda J. Schmidt
Glocester / Smithfield	111	Waterman	High	Vegetation/debris prohibited inspection, drainage trench clogged	Citizens for the Preservation of Waterman Lake, Inc.
Hopkinton / Richmond	216	Wyoming Upper	High	Vegetation prohibited inspection, inoperable low level outlet, Embankment depressions, sinkholes, failing & rotating areas, spillway leakage	Department of Environmental Management
Jamestown	575	Jamestown Lower	Significant	Vegetation prohibited inspection, low level outlet could not be located	Town of Jamestown
Johnston	127	Belknap	Significant	Vegetation prohibited inspection, embankment leakage, improper trash rack inhibiting flow, failed downstream wall	Fred A. Gott, Jr., Jane H. Gott, Carl Gott (New owners – David & Jennifer Foster)
Johnston	169	Almy	High	Vegetation prohibited inspection, spillway not functioning properly, low level outlet inoperable	Town of Johnston
Johnston	170	Simmons Upper	High	Vegetation prohibited inspection, low level outlet inoperable	Town of Johnston
Johnston	171	Simmons Lower	High	Vegetation prohibited inspection, severe embankment erosion, spillway not functioning properly, low level outlet inoperable	Town of Johnston
Johnston	313	Hughesdale Upper	High	Low section of embankment, low level outlet inoperable	Jeannette Y. Fontaine Of The Fontaine Living Trust

TOWN	DAM NO.	DAM NAME	HAZARD CLASS	UNSAFE CONDITION(S)	OWNER
Little Compton	474	Simmons Pond	Significant	Vegetation prohibited inspection	Department of Environmental Management
Lincoln	104	Bleachery Pond	High	Inoperable low level outlet	Wall St Investments LLC
Middletown	583	Gardiner	High	Vegetation prohibited inspection, deteriorated spillway, unknown operability of low level outlet	City of Newport
Middletown	584	Easton North	High	Vegetation prohibited inspection, vegetation affected spillway flow	City of Newport
North Kingstown	444	Silver Spring	High	Vegetation prohibited inspection, unknown presence of low level outlet.	Department of Environmental Management
Richmond	273	Wood River Junction	Significant	Inoperable low level outlet, embankment deterioration, leakage at the primary & auxiliary spillways	Department of Transportation
Scituate	345	Jordan	Significant	Vegetation prohibited inspection, spillway deterioration. Action was taken to address the unsafe conditions.	Providence Water Supply Board; City of Providence
Smithfield	109	Stillwater	Significant	Vegetation prohibited inspection, unknown operability of low level outlet, unknown capability of low level outlet discharge to flow away from dam	Breakwater Preservation Conservancy
Smithfield	121	Sprague Lower	High	Vegetation prohibited inspection, spillway location unknown, low level outlet operability unknown	Lake Wionkhiege Improvement Association
Warren	480	Warren Upper	Significant	Vegetation prohibited inspection	Bristol County Water Authority

A summary of each dam follows:

*Dam No. 003 (Wilson) in Burrillville*

The dam was inspected in 2013, and the Department of Environmental Management (DEM) issued a Notice of Violation to the owner in 2016 for unsafe conditions. In February 2019, DEM filed a complaint in Superior Court. In February 2020, a Consent Order was entered that includes a monitoring plan. In 2023, the owner continued to submit reports to DEM, which are under review.

*Dam No. 027 (Sucker) in Burrillville*

The dam was inspected in 2010, and the Department of Environmental Management (DEM) issued a Notice of Violation (NOV) to the owner in 2011 for unsafe conditions. The owner did not file an appeal of the NOV with DEM's Administrative Adjudication Division. In 2012, the owner cleared vegetation and retained a registered professional engineer to inspect the dam and complete a report, which was submitted to DEM. The low level outlet and auxiliary spillway issues have not been addressed. No change in status occurred in 2023.

*Dam No. 565 (Ross) in Burrillville*

The dam was inspected in 2011, and the Department of Environmental Management (DEM) issued a Notice of Violation (NOV) to the owner in 2013 for unsafe conditions. The owner requested a hearing on the NOV. In 2015 and 2016, DEM sought additional information from the Department of Transportation (DOT) to determine if the Significant Hazard classification is appropriate. In 2017, DEM received the information and determined that the hazard classification is appropriate and that DOT owns a portion of the dam. In 2018, a hearing was held. In March 2019, DEM's hearing officer issued a Decision and Order granting the appeal and dismissing the NOV. In May 2019, DEM and DOT met at the dam to discuss what DOT needed to do to address the unsafe conditions on the portion of the dam owned by DOT. DEM has not issued a NOV to DOT. No change in status occurred in 2023.

*Dam No. 572 (Wilbur) in Burrillville*

The dam was inspected in 2013 and 2015, and the Department of Environmental Management (DEM) issued a Notice of Violation to the owner in May 2016 for unsafe conditions. In February 2019, DEM filed a complaint in Superior Court. No change in status occurred in 2023.

*Dam No. 176 (Coventry Reservoir) in Coventry*

The dam was inspected in March 2020, and the Department of Environmental Management (DEM) issued a Notice of Violation (NOV) to the Town of Coventry in October 2020 for unsafe conditions. The Town filed an appeal of the NOV with DEM's Administrative Adjudication Division. In 2023, the Town continued to work to resolve the unsafe conditions.

*Dam No. 371 (Pearce Pond) in Coventry*

The dam was inspected in July 2016. The Department of Environmental Management (DEM) sent a Registration/Hazard Classification letter to the owner in August 2016, which was appealed to DEM's Administrative Adjudication Division (AAD). In April 2018, the owner withdrew his appeal. DEM issued a Notice of Violation (NOV) to the owner in January 2019 for unsafe conditions. The owner did not file an appeal of the NOV with AAD and did not comply with the NOV. In November 2023, DEM filed a complaint in Superior Court. The owner appears to be working towards addressing the NOV.



Dam No. 498 (Hopkins Farm) in Coventry

The dam was inspected in 2012, and the Department of Environmental Management (DEM) issued a Notice of Violation (NOV) to the owner in 2013 for unsafe conditions. The owner did not file an appeal of the NOV with DEM's Administrative Adjudication Division and has not complied with the NOV. No change in status occurred in 2023.

Dam No. 645 (Centre of New England #1) in Coventry

The dam was inspected in 2012, and the Department of Environmental Management (DEM) issued a Notice of Violation (NOV) to the owner in 2015 for unsafe conditions. The owner did not file an appeal of the NOV with DEM's Administrative Adjudication Division. In 2015, DEM approved a repair plan. The owner has not repaired the dam. No change in status occurred in 2023.

Dam No. 198 (Curran Lower) in Cranston

The dam was inspected in 2010. The Department of Environmental Management (DEM) owns the dam. In 2020, DEM's Division of Planning and Development (P&D) completed reviewing the preliminary engineering evaluations. In 2021, P&D issued a solicitation to firms for engineering service. Engineering studies commenced in 2022 and continued in 2023.

Dam No. 320 (Stone) in Cranston

The dam was inspected in 2013 and 2015, and the Department of Environmental Management (DEM) issued Notices of Violation (NOVs) to the owners in August 2016 for unsafe conditions. The owners did not file an appeal of the NOVs with DEM's Administrative Adjudication Division. In February 2019, DEM filed a complaint in Superior Court against one owner. The owner submitted a repair application, which was approved by DEM in May 2022. The other owner completed repairs in 2021 on their portion of the dam. In 2023, the owner completed the approved repairs to resolve the unsafe issues.



Stone Pond Dam (No. 320 ), Cranston, View of downstream auxiliary spillway before and after of fixing the spillway- GZA 2022 inspection and 2023 inspection.

Dam No. 221 (Browning) in Exeter

The dam was inspected in 2014. The Department of Environmental Management (DEM) owns the dam. In 2020, the Dam Safety Program approved a hazard classification change from High Hazard to Significant Hazard and DEM's Division of Planning and Development continued to review engineering evaluations based on the new hazard classification. No change in status in 2023.

Dam No. 238 (Edward's) in Exeter

The dam was inspected in 2012, and the Department of Environmental Management (DEM) issued a Notice of Violation (NOV) to the owner in 2015 for unsafe conditions. The owner did not file an appeal of the NOV with DEM's Administrative Adjudication Division and has not complied with the NOV. No change in status occurred in 2023.

Dam No. 349 (Spear) in Foster

The dam was inspected in 2016, and Department of Environmental Management (DEM) issued a Notice of Violation (NOV) to the owners in 2017 for the unsafe conditions. Because DEM was unable to confirm that the owners received the NOV, it was re-served in July 2018. The owners did not file an appeal of the NOV with DEM's Administrative Adjudication Division and have not complied with the NOV. No change in status occurred in 2023.

Dam No. 526 (Gorham. N. Farm Pond) in Foster

The dam was inspected in April 2022. In January 2023, DEM issued a Notice of Violation (NOV) to Foster Land Trust (FLT) for unsafe conditions. FLT filed an appeal of the NOV with DEM's Administrative Adjudication Division, but continued to work towards compliance.

Dam No. 018 (Burlingame) in Gloucester

The dam was inspected in 2014. The Department of Environmental Management (DEM) owns the dam. In 2019, DEM's Division of Planning and Development (P&D) initiated an engineering assessment, which was put on hold. In 2023, P&D solicited for alternative analysis study and is currently reviewing the submissions.

Dam No. 354 (Coomer) in Gloucester

The dam was inspected in 2014, and the Department of Environmental Management (DEM) issued a Notice of Violation (NOV) to the City of Providence (City) and the Providence Water Supply Board (PWSB) in November 2016 for unsafe conditions. The City and PWSB did not file an appeal of the NOV with DEM's Administrative Adjudication Division. In August 2019, PWSB, the City and their engineer presented a plan to DEM to address the unsafe conditions, which involved either reclassifying the dam, removing the dam, or transferring the dam to the Town of Scituate. In 2022, PWSB, the City and DEM entered into a consent agreement. In 2023 PWSB continued to work to resolve the remaining unsafe issues.

*Dam No. 555 (Hawkins Pond Dam) in Gloucester*

The dam was inspected in October 6, 2022, and the Department of Environmental Management (DEM) issued a Notice of Violation (NOV) to the Gloucester Land Trust (GLT) in February 2023 for unsafe conditions. GLT filed an appeal of the NOV with DEM's Administrative Adjudication Division, but is actively seeking quotes for the dam analysis.

*Dam No. 727 (Bowdish Lower) in Gloucester*

The dam was inspected in 2009, and the Department of Environmental Management (DEM) issued a Notice of Violation (NOV) to the owner in 2012 for unsafe conditions. In 2016, DEM filed a complaint in Superior Court, which led to a Court Order upholding the NOV as a final compliance order. In 2018, DEM became aware that the dam was transferred to another owner and issued a registration letter to the new owner, which referenced the Court Order. No response was received. No change in status occurred in 2023.

*Dam No. 111 (Waterman) in Gloucester/Smithfield*

The dam was inspected in 2012, and the Department of Environmental Management (DEM) issued a Notice of Violation (NOV) to the owner in 2014 for unsafe conditions. The owner did not file an appeal of the NOV with DEM's Administrative Adjudication Division. In 2018, the owner submitted a report. Some vegetation still needed to be removed and an area of seepage was discovered that needed to be investigated. DEM notified the owner to have an engineer inspect the dam and investigate the seepage. In 2020, an inspection report was submitted to DEM. In 2021, DEM notified the owner of the outstanding unsafe condition that needs to be addressed. In 2023, the owner continued to work to resolve the unsafe issue.

*Dam No. 216 (Wyoming Upper) in Hopkinton/Richmond*

The dam was inspected in 2011. The Department of Environmental Management (DEM) owns the dam. In 2019, DEM's Division of Planning and Development (P&D) retained a consultant. In 2020, P&D applied to the Dam Safety Program to repair the dam, which was approved. The repair work began in 2021 and continued in 2023.

*Dam No. 575 (Jamestown Lower) in Jamestown*

The dam was inspected 2012, and the Department of Environmental Management (DEM) issued a Notice of Violation to the Town of Jamestown (Town) in 2013 for unsafe conditions. In 2017, the Town submitted repair plans to DEM, which were approved in 2018. The remaining work needs to be completed during the low flow/dry season and the Town intends on performing this work during the summer of 2024.

*Dam No. 127 (Belknap) in Johnston*

The dam was inspected in 2011 and 2014, and the Department of Environmental Management (DEM) issued a Notice of Violation (NOV) to the owner in 2017 for unsafe conditions. In September 2019, DEM and the owner entered into a Consent Agreement to resolve the NOV. The Consent Agreement provides compliance deadlines to return the dam to a safe condition. The dam was acquired by new owners, and in June 2020, DEM notified the new owners of the Consent Agreement. No change in status in 2023.

*Dam No. 169 (Almy) in Johnston*

The dam was inspected, and the Department of Environmental Management (DEM) issued a Notice of Violation (NOV) to the Town of Johnston (Town) in 2010 for unsafe conditions. In 2013, DEM and the Town entered a Consent Agreement to resolve the NOV. The Consent Agreement provides compliance deadlines to return the dam to a safe condition. The deadlines have long passed. No change in status occurred in 2023.

*Dam No. 170 (Simmons Upper) in Johnston*

The dam was inspected, and the Department of Environmental Management (DEM) issued a Notice of Violation (NOV) to the Town of Johnston (Town) in 2010 for unsafe conditions. In 2013, DEM and the Town entered a Consent Agreement to resolve the NOV. The Consent Agreement provides compliance deadlines to return the dam to a safe condition. The deadlines have long passed. No change in status occurred in 2023.

*Dam No. 171 (Simmons Lower) in Johnston*

The dam was inspected, and the Department of Environmental Management (DEM) issued a Notice of Violation (NOV) to the Town of Johnston (Town) in 2010 for unsafe conditions. In 2013, DEM and the Town entered a Consent Agreement to resolve the NOV. The Consent Agreement provides compliance deadlines to return the dam to a safe condition. The deadlines have long passed. No change in status occurred in 2023.

*Dam No. 313 (Hughesdale Upper) in Johnston*

The dam was inspected in 2011, and the Department of Environmental Management (DEM) issued a Notice of Violation (NOV) to the owner in 2013 for unsafe conditions. The owner filed an appeal of the NOV with DEM's Administrative Adjudication Division (AAD). In 2015, the owner raised the low section of the embankment, but did not repair the low level outlet. In October 2017 and January 2018, an administrative hearing was held at AAD. In August 2018, AAD's hearing officer issued a Decision and Order upholding the appeal and dismissing the NOV. DEM appealed the Decision and Order to Superior Court. No change in status occurred in 2023.

*Dam No. 474 (Simmons) in Little Compton*

The dam was inspected in 2019. The Department of Environmental Management (DEM) owns the dam. In 2020, DEM's Division of Fish and Wildlife addressed the vegetation issues. In 2023, no progress was made in addressing the inoperable low level outlet.

*Dam No. 104 (Bleachery) in Lincoln*

The dam was inspected in 2022, and the Department of Environmental Management (DEM) issued a Notice of Violation (NOV) to the owner in January of 2023 for unsafe conditions. The owner filed an appeal of the NOV with DEM's Administrative Adjudication Division (AAD). The owner addressed the unsafe condition and paid a penalty in the spring of 2023 to resolve the NOV.

*Dam No. 583 (Gardiner) in Middletown*

The dam was inspected in 2013, and the Department of Environmental Management (DEM) issued a Notice of Violation (NOV) to the City of Newport (City) in April 2016 for unsafe conditions. The City filed an appeal of the NOV with DEM's Administrative Adjudication Division. In April 2021, the City and DEM entered into a Consent Agreement to resolve the NOV to address the vegetation issues. The Coastal Resources Management Council (CRMC) approved a multiyear vegetation plan. In 2023, the City continued to actively implement the plan.

*Dam No. 584 (Easton North) in Middletown*

The dam was inspected in 2013, and the Department of Environmental Management (DEM) issued a Notice of Violation (NOV) to the City of Newport (City) in April 2016 for unsafe conditions. In April 2021, the City and DEM entered into a Consent Agreement to resolve the NOV. The City submitted a repair application which was approved by DEM in April 2022. DEM received notification of a start of construction in August 2023.

*Dam No. 444 (Silver Spring) in North Kingstown*

The dam was inspected in 2013. The Department of Environmental Management (DEM) owns the dam. In 2020, DEM's Division of Planning and Development (P&D) applied to the Dam Safety Program to repair the dam, which was approved in 2021. Repair work began in the spring of 2022 and was completed in 2023.

*Dam No. 273 (Wood River Junction) in Richmond*

The dam was inspected in 2016. The Department of Transportation (DOT) owns the dam and was notified by the Department of Environmental Management (DEM) of unsafe conditions in November 2017. DEM has not issued a NOV to DOT. No change in status occurred in 2023.

*Dam No. 345 (Jordan) in Scituate*

The dam was inspected in 2014, and the Department of Environmental Management (DEM) issued a Notice of Violation (NOV) to the City of Providence (City) and the Providence Water Supply Board (PWSB) in November 2016 for unsafe conditions. The City and PWSB did not file an appeal of the NOV with DEM's Administrative Adjudication Division. In 2022, DEM, PWSB and the City entered into a consent agreement. PWSB continued to work towards compliance in 2023.

*Dam No. 109 (Stillwater) in Smithfield*

The dam was inspected in 2010, and the Department of Environmental Management (DEM) issued a Notice of Violation (NOV) to the owner in 2011 for unsafe conditions. The owner did not file an appeal of the NOV with DEM's Administrative Adjudication Division and has not complied with the NOV. No change in status occurred in 2023.

Dam No. 121 (Sprague Lower) in Smithfield

The dam was inspected in May 2017, and the Department of Environmental Management (DEM) issued a Notice of Violation (NOV) to the owner in September 2017 for unsafe conditions. The owner did not file an appeal of the NOV with DEM's Administrative Adjudication Division and did not comply with the NOV. In February 2019, DEM filed a complaint in Superior Court. No change in status occurred in 2023.

Dam No. 480 (Warren Upper) in Warren

The dam was inspected in 2012, and the Department of Environmental Management (DEM) issued a Notice of Violation (NOV) to the Bristol County Water Authority (BCWA) in 2014 for unsafe conditions. In 2020, BCWA and DEM entered into a Consent Agreement to resolve the NOV. In 2023, BCWA obtained all the required Federal and State permits to lower the dam so that it will be classified as Low Hazard and work began on the project.

POTENTIALLY UNSAFE DAMS WITH KNOWN OWNERS

In 2023, four dams with potentially unsafe conditions were identified. For two dams, the owners resolved the potentially unsafe conditions to the department's satisfaction (shaded in green). At the end of 2023, eleven dams with potentially unsafe conditions need to be addressed.

TOWN	DAM NO.	DAM NAME	HAZARD CLASS	POTENTIALLY UNSAFE CONDITION(S)	OWNER
Cumberland	079	Rawson Pond	Significant	Possible sediment transport	Town of Cumberland
Foster	526	Gorham, N. Farm Pond	Significant	Dense vegetation in Spillway and LLO inoperable	Foster Land Trust
Glocester	555	Hawkins Pond	High	Animal burrows	Glocester Land Trust
Hopkinton	285	Langworthy Pond	Significant	Partially undermining embankment	Richard A. Mann
Hopkinton/ Richmond	215	Barberville	Significant	Failed wall, erosion	Department of Environmental Management
Hopkinton / Richmond	247	Alton	Significant	Spillway erosion & undermining, abutment erosion	Department of Transportation
Johnston	127	Belknap	Significant	Failed wall	Fred A. Gott, Jr., Jane H. Gott, Carl Gott (David & Jennifer Foster)
Johnston	168	Oak Swamp	High	Embankment erosion and sinkholes	Town of Johnston
Lincoln	391	Handy Upper	High	Embankment deterioration	Town of Lincoln
North Kingstown	710	Slocum Road Upper	High	Possible sediment transport	Glenn & Gretel McCrory

TOWN	DAM NO.	DAM NAME	HAZARD CLASS	POTENTIALLY UNSAFE CONDITION(S)	OWNER
Scituate	351	Peeptoad	Significant	Embankment deterioration	Providence Water Supply Board; City of Providence
Scituate	648	Shoestring Mill	Significant	Depressed areas of embankment, spillway deterioration	Providence Water Supply Board; City of Providence
Tiverton	467	Mill Pond	Significant	Vegetation prohibited inspection	Jessica Herisse

A summary of each dam follows:

*Dam No. 079 (Rawson Pond) in Cumberland*

The dam was inspected in 2017, and the Department of Environmental Management (DEM) issued a notice to the Town of Cumberland (Town) in October 2021 for a potentially unsafe condition. In December 2021, the Town submitted a dam owner registration form and contacted DEM to discuss the notice. No change in status occurred in 2023.

*Dam No. 526 (Gorham, N. Farm Pond) in Foster*

The dam was inspected in April 2022. The Department of Environmental Management (DEM) issued a notice to the Foster Land Trust (FLT) in 2023 for potentially unsafe conditions, and FLT worked towards compliance.

*Dam No. 555 (Hawkins Pond) in Gloucester*

The dam was inspected in October 2022. The Department of Environmental Management (DEM) issued a notice to the Gloucester Land Trust (GLT) in 2023 for potentially unsafe conditions. GLT addressed the may be unsafe conditions and will continue to monitor the dam.

*Dam No. 285 (Langworthy Pond) in Hopkinton*

The dam was inspected in March 2023. The Department of Environmental Management (DEM) issued a notice to the owner in April 2023 for potentially unsafe conditions.

*Dam No. 215 (Barberville) in Hopkinton/Richmond*

The dam was inspected in 2014. The Department of Environmental Management (DEM) owns the dam, DEM's Division of Planning and Development has this dam on its list to evaluate. No change in status occurred in 2023.

*Dam No. 247 (Alton) in Hopkinton/Richmond*

The dam was inspected in 2017. The Department of Transportation (DOT) owns the dam. In March 2018, the Department of Environmental Management (DEM) issued a notice to DOT for potentially unsafe conditions. In 2019, DEM and DOT discussed the notice. No change in status occurred in 2023.

*Dam No. 127 (Belknap) in Johnston*

The dam was inspected in 2011 and 2014, and the Department of Environmental Management (DEM) issued a notice to the owner in February 2017 for potentially unsafe conditions. On December 24, 2019, the property was transferred to new owners. In 2020, DEM issued a notice to the new owners. No change in status occurred in 2023.

*Dam No. 168 (Oak Swamp Reservoir) in Johnston*

The dam was inspected in 2022 and the Department of Environmental Management issued a notice to the Town of Johnston in 2022 for potentially unsafe conditions. No change in status occurred in 2023.

*Dam No. 391 (Handy Upper) in Lincoln*

The dam was inspected in 2018, and the Department of Environmental Management (DEM) issued a notice to the Town of Lincoln (Town) in September 2019 for potentially unsafe conditions. In 2020, the Town met with DEM to discuss the notice. The Town states it does not own the dam. No change in status occurred in 2023.

*Dam No. 710 (Slocum Road Upper) in North Kingstown*

The dam was inspected in 2020, and the Department of Environmental Management (DEM) issued a notice to the owners in August 2021. In November 2021, the owners consultant submitted a report which indicated that they will be submitting a plan to address the potentially unsafe condition. In June 2022 the DEM approved a repair plan and in 2023, the repair work was completed .

*Dam No. 351 (Peeptoad) in Scituate*

The dam was inspected in 2014, and the Department of Environmental Management (DEM) issued a notice to the City of Providence (City) and the Providence Water Supply Board (PWSB) in December 2016 for potentially unsafe conditions. In July 2022, PWSB, the City and DEM entered into a consent agreement to resolve the remaining issues. In 2023, the PWSB continued to work towards compliance.

*Dam No. 648 (Shoestring) in Scituate*

The dam was inspected in 2014, and the Department of Environmental Management (DEM) issued a notice to the City of Providence (City) and the Providence Water Supply Board (PWSB) in 2016 for potentially unsafe conditions. In July 2022. PWSB, the City and DEM entered into a consent agreement to resolve the remaining issues. In 2023, the PWSB continued to work towards compliance.

*Dam No. 467 (Mill Pond) in Tiverton*

The dam was inspected in February 2020. The Department of Environmental Management (DEM) issued a notice to the new owners in November 2023 for a potentially unsafe condition.



### UNSAFE DAMS WITH UNKNOWN OWNERS

The Department of Environmental Management has identified the following thirty-three unsafe dams with unknown owners.

<b>TOWN</b>	<b>DAM NO.</b>	<b>DAM NAME</b>	<b>HAZARD CLASS</b>
Burrillville	015	Union Mill	Significant
Burrillville	016	Pascoag Upper	High
Burrillville	039	Spring	Significant
Burrillville	051	Nichols	Significant
Charlestown	758	Cross Mills	Significant
Charlestown/Richmond	249	Horseshoe Falls Dam	Significant
Coventry	152	Mill	Significant
Coventry	177	Tiogou	High
Coventry	185	Black Rock	High
East Greenwich	432	Gale Farm Pond	Significant
Glocester	021	Cherry Valley	Significant
Glocester	029	Mower	Significant
Glocester	032	Snakeskin	Significant
Glocester	381	Sucker Brook	Significant
Glocester	401	Lake Washington	High
Hopkinton	227	Ashville	Significant
Johnston	169	Almy	High
Johnston	323	Caesarville	Significant
Johnston	504	Dexter Farm	Significant
Lincoln	649	Bridlewood Upper End	High
Little Compton	746	Adamsville	Significant
Narragansett	733	Sprague	Significant
North Kingstown	550	Hamilton	Significant
North Kingstown	704	Secret	Significant
North Providence	760	Louisquisset	High
North Smithfield	048	Forestdale	High
Scituate	160	Hope	Significant
Smithfield	123	Hawkins	Significant
South Kingstown	579	Rocky Brook	Significant
Warwick	669	Dave's Marketplace	Significant
West Warwick	145	Natick	High
West Warwick	149	Centerville	High
Woonsocket	621	Holley Lane Pond	High

### POTENTIALLY UNSAFE DAMS WITH UNKNOWN OWNERS

The Department of Environmental Management has not identified any potentially unsafe dams with unknown owners.

## COMPLIANCE INSPECTIONS

Rhode Island's *Rules and Regulations for Dam Safety* (250-RICR-130-05-1) require visual inspection of High Hazard dams every two years and visual inspection of Significant Hazard dams every five years. Inspections are completed by the Department of Environmental Management (DEM), by registered professional engineers retained by DEM using a Federal Emergency Management Agency (FEMA) grant (*Grants to the Department of Environmental Management*, page 29) or by registered professional engineers retained by dam owners. To satisfy these requirements, forty-eight High Hazard dams and sixteen Significant Hazard dams require inspection each year.

If a dam owner is actively working on a dam, either in response to an enforcement notice issued by DEM or as an owner-initiated dam repair, DEM will often suspend the visual inspection requirement until the work is complete. DEM also does not perform or cause to be performed inspections of dams regulated by the Federal Energy Regulatory Commission (FERC) or owned by public water suppliers.

### High Hazard Dam Inspections

Thirty five High Hazard dams were inspected, as indicated in the table below.

<b>TOWN</b>	<b>DAM NO.</b>	<b>DAM NAME</b>
Burrillville	003	Wilson Reservoir
Burrillville	016	Pascoag Reservoir
Burrillville	766	Ocean State Power
Coventry	167	Flat River Reservoir
Coventry	177	Tiogou Lake
Coventry	185	Black Rock Reservoir
Coventry	561	Arnold Pond
Cranston	172	Cranston Print Works Pond
Cranston	320	Stone Pond
Exeter	239	Slocum Reservoir
Exeter	240	Yorker Mill Pond
Glocester	022	Keech Pond
Glocester	401	Lake Washington
Glocester	556	Clarkville Pond
Glocester	566	Bowdish Reservoir
Hopkinton	226	Yawgoog Pond
Hopkinton	262	Locustville Pond
Lincoln	097	Butterfly Pond
Lincoln	099	Moffett Pond
Lincoln	295	Limerock Reservoir
Lincoln	649	Bridlewood Upper End

TOWN	DAM NO.	DAM NAME
North Providence	084	Wenscott Reservoir
North Providence	760	Louisquisset Flood Control
North Smithfield	043	Slatersville Reservoir Upper
North Smithfield	046	Slatersville Reservoir Middle
North Smithfield	048	Forestdale Pond
Smithfield	108	Stillwater Reservoir
Smithfield	115	Slack Reservoir
Smithfield	116	Hopkins Pond
South Kingstown	425	Wakefield Pond
South Kingstown	525	Hefler Farm Pond
Tiverton	742	Creamer
Warwick	462	Camp Warwick
Woonsocket	073	Harris Pond
Woonsocket	621	Holley Lane Pond



Moffett Dam (No. 099) Pare Inspection April 28, 2023

Significant Hazard Dam Inspections

Seven Significant Hazard dams were inspected, as indicated in the table below.

TOWN	DAM NO.	DAM NAME
Coventry	186	Upper Pond
Hopkinton / Richmond	215	Barberville Pond
Hopkinton / Richmond	247	Alton Pond
Charlestown / Richmond	249	Horseshoe Falls
Richmond	273	Wood River Junction
Cranston	340	Meshanticut Park Pond
West Warwick	455	Bouchar Farm Pond



Horseshoe Falls Dam (No. 573), Primary spillway – GZA Inspection June 28, 2023

**Requested Inspections**

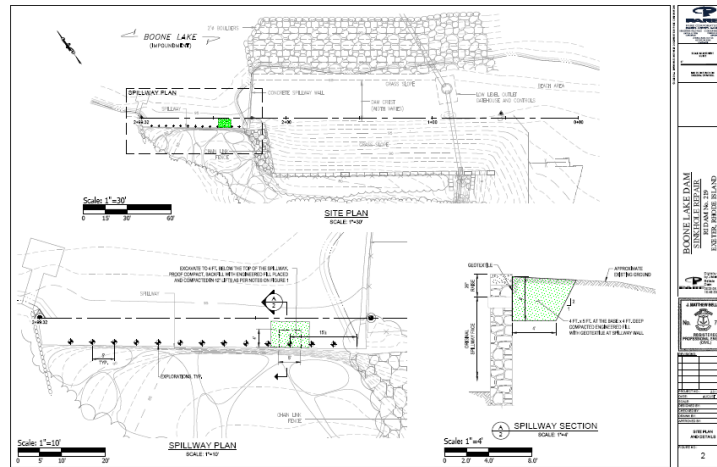
The Department of Environmental Management (DEM) investigates complaints for High Hazard or Significant Hazard dams upon request by any person who has cause to believe the dam is unsafe. In 2023, DEM received complaints for the following dams:

TOWN	DAM NO.	DAM NAME	HAZARD CLASS	REASON FOR INSPECTION	CONCLUSION
Tiverton	742	Creamer	High	Drainage structure was opened to lower water level of the pond.	Owner removed debris. No action needed.
Glocester / Smithfield	111	Waterman Lake Reservoir	High	High water level. Concerned that Waterman Lake Assoc. not operating dam properly.	Ongoing investigation.
Providence	093	Canada Upper Pond	Significant	City reported a concern that there is flooding on Branch Ave and there may be an issue with the dam.	Storm water related issues. No concern with dam. No action needed.

**REPAIR APPROVALS**

The Department of Environmental Management approved repairs for the following dams:

TOWN	DAM NO.	DAM NAME	HAZARD CLASS	REPAIR
Exeter	219	Boone Lake	High	Sinkhole at spillway

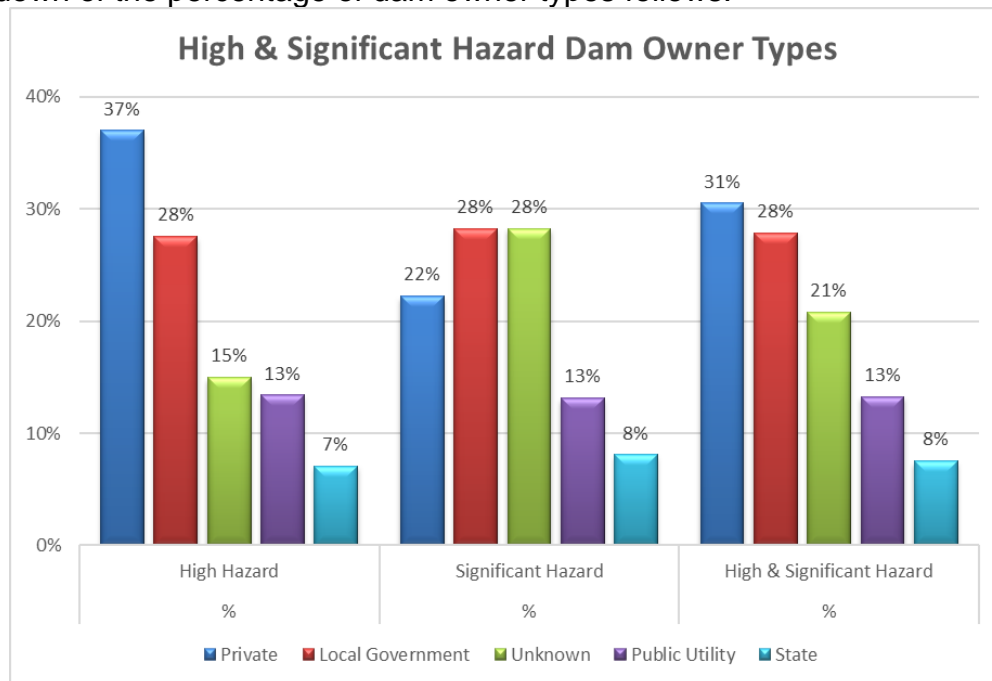


Boone Lake (No. 219) Design by PARE for sink hole repair.

**OWNER / CONTACT INFORMATION**

Many dams that were previously classified as Low Hazard and were reclassified to Significant Hazard or High Hazard have questionable owner information. About forty-three dams have at least one owner that has not been identified.

A breakdown of the percentage of dam owner types follows:



Orphan Dams

Beginning in 2016, the Department of Environmental Management (DEM) began using the following definition of the term *orphan dam*: An orphan dam is one in which no owner can be identified. DEM has identified the following two orphan dams:

<b>TOWN</b>	<b>DAM NO.</b>	<b>DAM NAME</b>	<b>HAZARD CLASS</b>
South Kingstown	525	Hefler Farm Pond	High
Warwick	764	Grist Mill Pond	High

In 2013, DEM contacted the Town of South Kingstown (Town) and the owners that have property on the pond that is created by the dam to determine if the Town or property owners were interested in acquiring ownership of the dam or assuming responsibility for its maintenance. DEM advised the Town and the owners that if there was no interest, DEM would seek funds to have the dam removed. The Town expressed a willingness to assist the owners, however, none of the owners expressed an interest and the dam remains unmaintained.

In 2021, DEM contacted the City of Warwick (City) and the owners that have property on the pond that is created by the dam to determine if the City or property owners were interested in acquiring ownership of the dam or assuming responsibility for its maintenance. DEM advised the City and the owners that if there was no interest DEM would seek funds to have the dam removed. Neither the City nor the owners have expressed any interest and the dam remains unmaintained.

Registration

In 2008, the Department of Environmental Management (DEM) began registering dams. The process involves mailing a registration form to each owner of a High Hazard or Significant Hazard dam to formally notify the owner of the dam’s hazard classification. The owner then has a specific time period to return a completed registration form or to appeal the hazard classification to DEM’s Administrative Adjudication Division. There is no fee to register a dam and the main purpose of the registration form is to obtain up-to-date contact information on the dam owner.

REMOVALS

There were no dam removals.

GRANTS TO THE DEPARTMENT OF ENVIRONMENTAL MANAGEMENT

From 2000 through 2023, the Department of Environmental Management (DEM) received grants totaling \$1,183,425 from the Federal Emergency Management Agency (FEMA) National Dam Safety Program.

The FEMA grant was awarded in August 2023 for \$52,822 to fund the following:

\$46,162	Visual inspections of High Hazard dams
\$1,344	Cell phone/wireless modem service
\$1,800	Association of State Dam Safety Officials dues
\$3,490	Training/travel
\$26	State audit fee

Previous grants were used for engineering services to complete hazard classifications of about two hundred dams, to visually inspect High Hazard and Significant Hazard dams, and to purchase vehicles, computers, tablets, cell phones, file cabinets and aerial photos, all of which assisted with the operation of the Dam Safety Program.

In 2019, FEMA awarded to DEM \$169,542 under a new FEMA grant program titled *Rehabilitation of High Hazard Potential Dams* (HHPD) to repair or remove High Hazard dams. For a dam to be eligible, it must have, among other things, an approved Emergency Action Plan (EAP) and be the subject of a notice issued by the Dam Safety Program for an unsafe condition. The funds are being used to design the repair of one DEM owned dam (Curran Lower).

In 2020, FEMA awarded DEM \$114,943 under the HHPD grant. The funds were used to repair one DEM owned dam (Silver Spring).

Five dams are currently eligible for funding under the HHPD grant. The Dam Safety Program has not applied for the 2024 HHPD grant due to lack of staff to apply for and manage this grant. The remaining high hazard unsafe dams are not eligible for funding as the dams all lack an approved EAP.

#### INTERAGENCY COORDINATION

Since 2010, the Department of Environmental Management (DEM) and the Rhode Island Emergency Management Agency (RIEMA) have met on an as-needed basis to improve communication and response to dam safety emergencies. Coordination also includes a DEM review of specific sections of Emergency Action Plans for which RIEMA requests assistance, such as a dam-specific condition that describes when the plan should go into effect (*Emergency Action Plans*, page 32). In 2023, the DEM and RIEMA coordinated a workshop for city/town officials for assistance with developing Emergency Action Plans and to explain the change to the statute that was enacted in 2022 that authorizes DEM to assess penalties to cities and towns that do not complete EAPs.

#### MEETING/SEMINAR ATTENDANCE

In January 2023, the Dam Safety Program staff attended the Environmental Business Council (EBC) Dam Management Committee Roundtable Discussions, which was held virtually with dam safety officials from all the New England States and consultants. The

meeting provided a forum for dam safety officials to meet with and become more familiar with the EBC, and to explore ways to support each other in the promotion of dam safety and emergency preparedness in New England.

**STATE OWNED DAMS**

The following High Hazard and Significant Hazard dams are owned by the State of Rhode Island and maintained by either the Department of Environmental Management (DEM) or the Department of Transportation (DOT):

<b>TOWN</b>	<b>DAM NO.</b>	<b>DAM NAME</b>	<b>HAZARD CLASS</b>	<b>OWNER</b>	<b>STATUS</b>
Burrillville	565	Ross	Significant	DOT	Unsafe
Cranston	166	Curran Upper	High	DEM	Not Unsafe
Cranston	198	Curran Lower	High	DEM	Unsafe
Cranston	340	Meshanticut Park	Significant	DEM	Not Unsafe
Exeter	221	Browning Mill	Significant	DEM	Unsafe
Glocester	018	Burlingame Upper	High	DEM	Unsafe
Glocester	499	Durfee Hill Wildlife Marsh #2	Significant	DEM	Not Unsafe
Glocester	566	Bowdish	High	DEM	Not Unsafe
Hopkinton	440	Hoxie Farm	Significant	DOT	Not Unsafe
Hopkinton/ Richmond	215	Barberville	Significant	DEM	Not Unsafe
Hopkinton/ Richmond	216	Wyoming Upper	High	DEM	Unsafe
Hopkinton/ Richmond	247	Alton	Significant	DOT	Potentially Unsafe
Lincoln	102	Olney	High	DEM	Not Unsafe
Little Compton	474	Simmons	Significant	DEM	Unsafe
North Kingstown	444	Silver Spring	High	DEM	Not Unsafe
Richmond	261	White's	High	DEM	Not Unsafe
Richmond	273	Wood Junction	Significant	DOT	Unsafe
Smithfield	108	Stillwater	High	DEM	Not Unsafe

The status of the unsafe State owned dams is explained in the section titled *UNSAFE DAMS WITH KNOWN OWNERS* that begins on page 12.





Bowdish Reservoir Dam (No 566). Photo dated June 1, 2023

### EMERGENCY ACTION PLANS

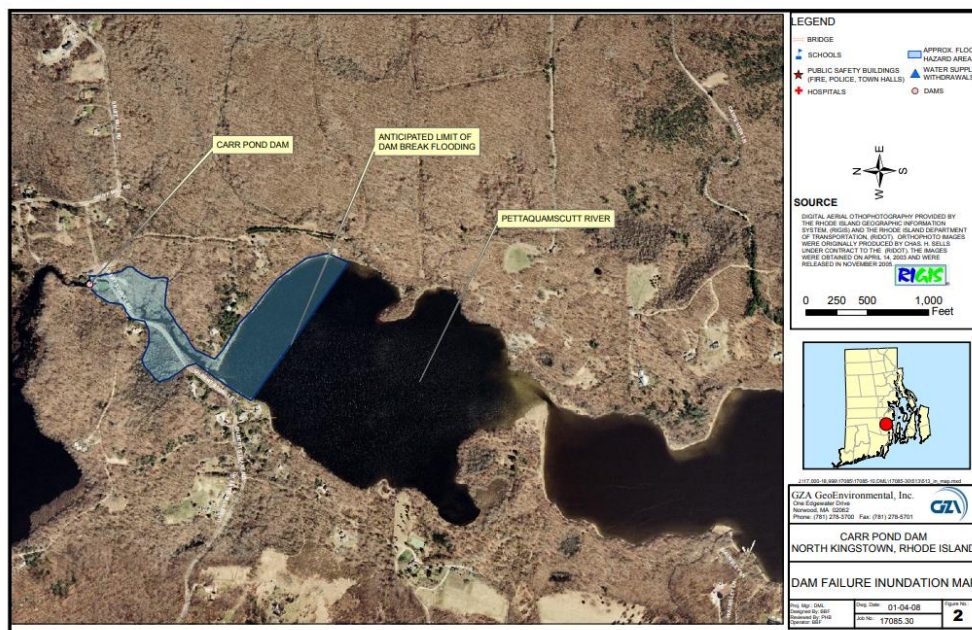
Rhode Island General Laws Section 46-19-9 (Emergency action plans) requires a city or town in which a High Hazard dam or Significant Hazard dam is located, and a state agency that owns a High Hazard dam or Significant Hazard dam, to complete by July 1, 2008, an Emergency Action Plan (EAP) for the dam (*Statutes*, page 7). An EAP is a formal document that identifies potential emergency conditions at a dam and specifies pre-planned actions to be followed to minimize loss of life and property damage. The law mandates that the Rhode Island Emergency Management Agency (RIEMA) coordinate development of the EAPs and give final approval for an EAP to be considered complete. The law also requires that the Department of Environmental Management and the Rhode Island League of Cities and Towns cooperate with RIEMA.

To date, RIEMA has approved EAPs for the following 77 dams out of 176 that require them:

TOWN	DAM NO.	DAM NAME	HAZARD CLASS
Bristol	409	State Street	Significant
Burrillville	001	Wallum	Significant
Burrillville	003	Wilson	High
Burrillville	008	Harrisville	High
Burrillville	015	Union Mill	Significant
Burrillville	016	Pascoag Upper	High

<b>TOWN</b>	<b>DAM NO.</b>	<b>DAM NAME</b>	<b>HAZARD CLASS</b>
Burrillville	027	Sucker Pond	Significant
Burrillville	039	Spring	Significant
Burrillville	051	Nichols	Significant
Burrillville	565	Ross	Significant
Burrillville	572	Wilbur	High
Burrillville	766	Ocean State Power	High
Cranston	166	Curran Upper	High
Cranston	198	Curran Lower	High
Cranston	340	Meshanticut Park	Significant
Cumberland	079	Rawson Pond	Significant
Cumberland	081	Robin Hollow	Significant
Cumberland	082	Happy Hollow	Significant
East Providence	407	James V Turner	High
Exeter	219	Boone Lake	High
Exeter	221	Browning Mill	High
Glocester	018	Burlingame Upper	High
Glocester	381	Sucker Brook Bridge Pond	Significant
Glocester	499	Durfee Hill Wildlife #2	Significant
Glocester	566	Bowdish	High
Hopkinton	225	Wincheck	Significant
Hopkinton	226	Yawgoog	High
Hopkinton	227	Ashville	Significant
Hopkinton	229	Blue	Significant
Hopkinton	262	Locustville	High
Hopkinton	274	Harris	Significant
Hopkinton	285	Langworthy	Significant
Hopkinton	440	Hoxie Farm Pond	Significant
Hopkinton / Richmond	215	Barberville	Significant
Hopkinton / Richmond	216	Wyoming Upper	High
Hopkinton / Richmond	247	Alton	Significant
Jamestown	574	Jamestown Reservoir	Significant
Jamestown	575	Jamestown Lower Reservoir	Significant
Lincoln	097	Butterfly Pond	High
Lincoln	099	Moffett Pond	High
Lincoln	101	Barney Pond	High
Lincoln	102	Olney	High
Lincoln	104	Bleachery Pond	High
Lincoln	295	Limerock	High
Lincoln	391	Handy Pond Upper	High
Lincoln	408	Bridlewood Pond	High
Lincoln	649	Bridlewood Upper	High
Little Compton	474	Simmons	Significant
Narragansett	733	Sprague	Significant
New Shoreham	424	Block Island Rod & Gun Club Pond	Significant
New Shoreham	765	Mill Pond	Significant
North Kingstown	444	Silver Spring	High

TOWN	DAM NO.	DAM NAME	HAZARD CLASS
North Kingstown	513	Carr	High
North Kingstown	550	Hamilton	Significant
North Kingstown	553	Belleville	Significant
North Kingstown	615	Rodman Mill	High
North Kingstown	693	Slocum Woods	High
North Kingstown	704	Secret	Significant
North Kingstown	708	Shady Lea Mill	High
North Kingstown	710	Slocum Road Upper	High
Providence	093	Canada Upper	Significant
Providence	300	Cunliff	Significant
Richmond	261	White's	High
Scituate	161	Gainer Memorial	High
Scituate	162	Moswansicut	Significant
Scituate	164	Barden	Significant
Scituate	345	Jordan	Significant
Scituate	360	Horseshoe	Significant
Scituate	361	Pine Swamp #1	Significant
Scituate	648	Shoestring Mill	Significant
Smithfield	108	Stillwater	High
South Kingstown	236	Glen Rock	Significant
South Kingstown	426	Peace Dale	High
South Kingstown	525	Hefler Farm	High
South Kingstown	549	Asa	High
South Kingstown	573	Indian Run	Significant
South Kingstown	579	Rocky Brook	Significant



Dam failure inundation map for Carr Pond Dam (No. 513), North Kingstown. A map specific to each dam is included in the EAP for that dam.

## DAM MANAGEMENT DISTRICTS

Rhode Island General Laws Chapter 45-62 (Dam Management Districts) authorizes cities and towns to create dam management districts for the maintenance and repair of dams within their boundaries. The following two districts are currently in operation:

TOWN	DAM NO.	DAM NAME	HAZARD CLASS
Burrillville	016	Pascoag Upper	High
Exeter	219	Boone	High

In 2008, the Town of Exeter created a district for the Boone Lake Dam (No. 219), which is a privately owned, High Hazard dam.

In 2009, the Towns of Burrillville and Glocester created a district for the Pascoag Reservoir Upper Dam (No. 16). The dam is a privately owned, High Hazard dam. The dam is located in Burrillville and the impoundment continues into Glocester.

## PROFESSIONAL ASSOCIATIONS

Rhode Island has been a member of the Association of State Dam Safety Officials (ASDSO) since its inception in Denver, Colorado in 1984. ASDSO membership consists of State representatives along with corporate and individual members representing dam owners and professional engineering firms. ASDSO was formed to serve these initial functions:

- Improve efficiency and effectiveness of State dam safety programs.
- Foster public awareness.
- Facilitate inter-organizational, intergovernmental and interstate cooperation.
- Assist the dam safety community and provide a forum for the exchange of information.
- Provide representation of dam safety interests before state legislatures and before Congress.
- Manage the association effectively through internal policies and procedures.

ASDSO has helped to improve dam safety in Rhode Island mainly through its sponsorship of regional dam safety workshops and its national annual conferences.

## PROGRAM CHALLENGES

### UNCLEAR OWNERSHIP

Currently, thirty-three High Hazard dams and Significant Hazard unsafe dams have unclear ownership. Without identifying ownership, the Department of Environmental Management (DEM) has limited tools to address unsafe conditions at these dams. If the cities and towns and/or the property owners who benefit from the ponds/lakes that are

created by these dams are unable or unwilling to assume responsibility for the upkeep of these dams, these dams will continue to pose an increased risk of failure.

### INSPECTIONS OF HIGH HAZARD AND SIGNIFICANT HAZARD DAMS

Rhode Island's *Rules and Regulations for Dam Safety* (250-RICR-130-05-1) require inspections of forty-eight High Hazard dams and sixteen Significant Hazard dams each year. The Department of Environmental Management (DEM) receives about \$52,000 each year from the Federal Emergency Management Agency for the Dam Safety Program. A majority of the funds are used to retain registered professional engineers to inspect the dams. Each inspection costs approximately \$2,300, which provides funding for inspections of approximately twenty-two dams each year. The Dam Safety Program has the capacity to perform about ten inspections each year. This leaves a shortfall of approximately twenty two dams each year, with the exception of dams that are not inspected because the dam owner is actively working on a dam either in response to an enforcement action or an owner initiated dam repair.

### CONSTRUCTION OF BUILDINGS WITHIN INUNDATION AREAS BELOW DAMS

New structures that are built within inundation areas below dams increase the number of High Hazard dams and Significant Hazard dams and increase the risk to life and property. This is referred to as hazard creep. Previously there was no statute that allows an evaluation of the risk posed by new structures within these inundation areas. In 2022, Section 23-27.3-100.1.5.5 (Hurricane, storm and flood standards) of the building code was amended to include inundation areas below dams. The Dam Safety program spoke with the Building Code Commissioner and educated him on the new statute and offered to assist the Commissioner in implementing the statute. In 2023, DEM sent electronic correspondence to the Commissioner inquiring about the status of implementing the law

### FUNDING TO REPAIR OR REMOVE PRIVATELY OWNED DAMS

About one-third of the High Hazard dams and Significant Hazard dams in Rhode Island are privately owned. The cost to repair these dams can range from the hundreds of thousands of dollars to millions of dollars, which typically far exceeds the financial ability of most private owners. For High Hazard dams and Significant Hazard dams that are determined to be unsafe, this poses a risk to all residents in the State. The Department of Environmental Management (DEM) currently has the authority to issue orders to owners for unsafe dams and if the owner fails to comply with the order, DEM has the authority to repair the dam and assess the cost of the repairs to the dam owner, including the use of deed restrictions.

### INADEQUATE SPILLWAY CAPACITIES AND ENGINEERING ANALYSES

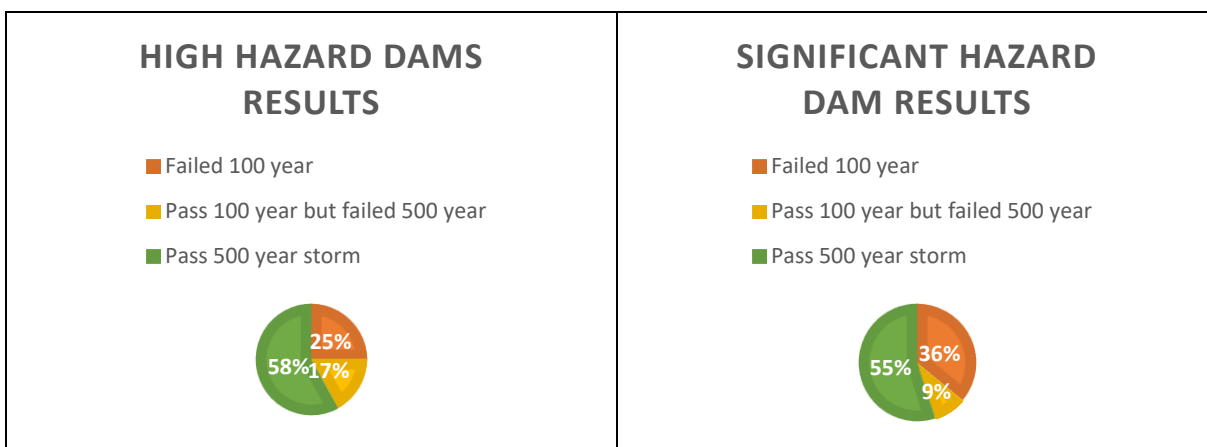
By law, the Department of Environmental Management (DEM) is required to inspect or cause to be inspected all the dams in the State. The visual inspections performed by the Dam Safety Program do not involve full engineering analyses of the structural integrity of

dams. Although a visual inspection can provide indicators of underlying problems, an engineering analysis is sometimes needed to more fully assess the condition of the dam.

Climate scientists predict that we will experience more severe storms and heavy rainfall and that infrastructure will be more susceptible to damage [the link to the State’s primary portal for information and resources on climate change is <http://climatechange.ri.gov/>].

In the March 2010 floods, five dams failed in Rhode Island (two Significant Hazard dams and 3 Low Hazard dams).

In 2019, the Dam Safety Program completed its review of a study to assess whether the High Hazard dams and Significant Hazard dams can safely pass flow from storms up to the five hundred year event.



The Dam Safety Program has plans to hold a virtual public workshop in 2024 with dam owners, City and Town officials, consultants and other interested parties to share the findings and explain what DEM will be doing to address the findings.

### LACK OF EMERGENCY ACTION PLANS

An Emergency Action Plan (EAP) identifies the actions that will be taken in case of an emergency at a dam, including notification and evacuation. The Department of Environmental Management (DEM) and the Rhode Island Emergency Management Agency (RIEMA) have been working to get EAPs in place for all High Hazard dams and Significant Hazard dams. Under Section 46-19-9, cities and towns were required to submit EAPs to RIEMA by July 1, 2008. It has been almost fifteen years since the EAPs were required and only seventy-seven dams have approved EAPs (*Emergency Action Plans*, page 31). Responding to an emergency at a dam without an EAP increases the risk to life and property. In 2022, Section 46-19-9 was amended authorizing DEM to assess an administrative penalty for failure to comply. In the fall of 2022, DEM issued letters to each city and town advising them of the amended statute and included a list of dams in their jurisdiction which do not have approved EAPs. In the fall of 2023, DEM partnered with RIEMA to provide a workshop for cities and towns to assist with the EAP

process. Going forward, in 2024 DEM intends to begin issuing violations against municipalities that have failed to develop EAPs for approval.

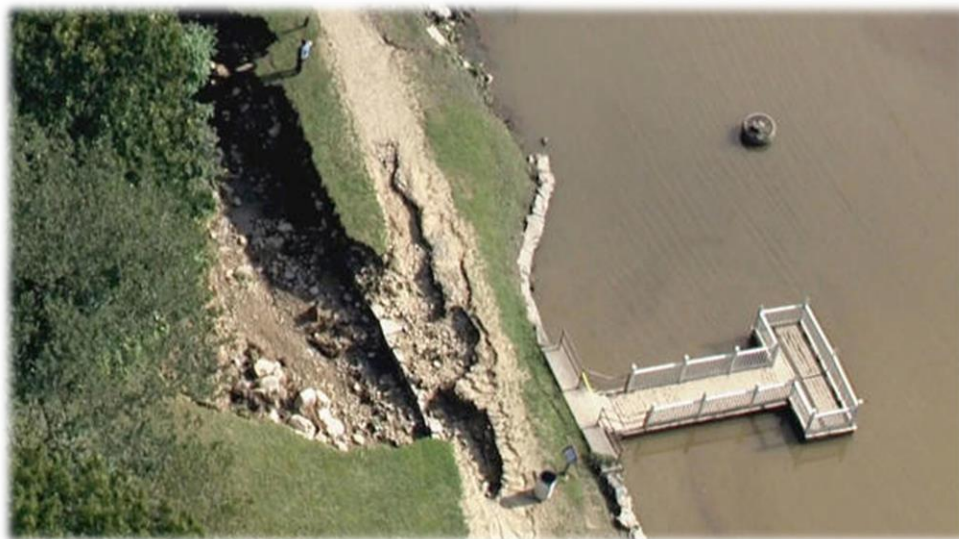
### STAFFING

Currently, the Dam Safety Program has 2.25 full time equivalents (FTEs), consisting of 1.0 FTE (engineer), 1.0 FTE (scientist), 0.2 FTE (management) and 0.05 FTE (administrative/clerical). Previously the program had 2.0 FTE engineers. In the summer of 2023, one engineer left and was replaced by a scientist because no qualified engineers applied. Taking into account the staff resources currently available in the Dam Safety Program, the work is prioritized and not all of the aspects of the program are completed at the frequency outlined in the regulations.

### INTENSE RAINSTORMS

In August 2014, a storm hit Islip, Long Island with 13.5 inches of rain in 24 hours. Islip is eighty-six miles from Rhode Island. The National Oceanic and Atmospheric Administration modeled the impact to Rhode Island's dams if that storm had struck us and their conclusion was that the storm would have caused record floods on almost all of the major rivers in the State. Because this storm developed so quickly, our current response capabilities would be ineffective for this type of storm.

In September 2023, a storm hit Leominster, MA with 9.5 inches of rain within a few hours. Leominster is located 36 miles north of the Rhode Island/Massachusetts border. Leominster residents living near the Barrett Park Pond Dam were told to evacuate as emergency officials were concerned with the integrity of the dam. The Governor eventually declared a state of emergency as this storm resulted in the destruction of numerous roads and structures.



A wall at the Barrett Park Pond Dam in Leominster was washed away during floods. CBS BOSTON

In 2022, Section 46-19-9 was amended by adding subsection (g) requiring the Department of Environmental Management (DEM) and the Rhode Island Emergency Management Agency (RIEMA) to establish a notification system for dams. In 2023, DEM and RIEMA worked on the implementation of the notification system.

#### LOW HAZARD DAMS THAT REQUIRE RECLASSIFICATION

The Low Hazard dams are classified based on assessments that were done by the Dam Safety Program in the early to mid-2000s. Classifications can change over time due to additional development that occurs within an inundation zone. This is known as hazard creep. Rhode Island's *Rules and Regulations for Dam Safety* (250-RICR-130-05-1) require the Department of Environmental Management (DEM) to assess inundation zones downstream of Low Hazard dams at least every five years to determine whether the dam should be reclassified to High Hazard or Significant Hazard. This assessment was conducted in the summer of 2023 and is currently under review.

This completes the annual report on dam safety and the activities performed by DEM in 2023. For further information on the Dam Safety Program, please contact David E. Chopy, Administrator of DEM's Office of Compliance and Inspection at (401) 537-4442, or at [david.chopy@dem.ri.gov](mailto:david.chopy@dem.ri.gov).



2023 Dam Safety Annual Report  
Attachment

CITY/TOWN	RIVER/STREAM	DAM NAME	STATE ID	HAZARD
BARRINGTON	MUSSACHUCK CREEK-TRIB	ECHO LAKE	570	LOW
BARRINGTON	UNNAMED	NEW MEADOW NECK	661	LOW
BRISTOL	UNNAMED STREAM	STATE STREET POND	409	SIGNIFICANT
BRISTOL	MOUNT HOPE BAY-TRIB	MOUNT HOPE FARM UPPER	662	LOW
BRISTOL	MOUNT HOPE BAY-TRIB	MOUNT HOPE FARM LOWER	663	LOW
BURRILLVILLE	CLEAR RIVER	WALLUM LAKE	001	SIGNIFICANT
BURRILLVILLE	CLEAR RIVER	WALLUM LAKE POOL	002	LOW
BURRILLVILLE	CLEAR RIVER	WILSON RESERVOIR	003	HIGH
BURRILLVILLE	CLEAR RIVER	PRENDERGAST MILL POND	004	LOW
BURRILLVILLE	CLEAR RIVER	GREEN SHODDY MILL POND	005	LOW
BURRILLVILLE	CLEAR RIVER	PREMIER MILL POND	006	LOW
BURRILLVILLE	PASCOAG RIVER	HARRISVILLE POND	008	HIGH
BURRILLVILLE	CHEPACHET RIVER	MAPLEVILLE POND	010	LOW
BURRILLVILLE	PASCOAG RIVER	AMERICAN MILL POND	011	LOW
BURRILLVILLE	PASCOAG RIVER	AKELA POND	014	LOW
BURRILLVILLE	PASCOAG RIVER	UNION MILL POND	015	SIGNIFICANT
BURRILLVILLE	BRANDY BROOK	PASCOAG RESERVOIR UPPER	016	HIGH
BURRILLVILLE	SUCKER BROOK	SUCKER POND	027	SIGNIFICANT
BURRILLVILLE	CHEPACHET RIVER	GILLERAN POND	035	LOW
BURRILLVILLE	TROUT POND BROOK	TROUT POND	036	LOW
BURRILLVILLE	BRANCH RIVER	OAKLAND POND	037	LOW
BURRILLVILLE	BRANCH RIVER	GLENDALE	038	LOW
BURRILLVILLE	HERRING BROOK	SPRING LAKE	039	SIGNIFICANT
BURRILLVILLE	BRANCH RIVER	MOHEGAN	040	LOW
BURRILLVILLE	BRANCH RIVER	NASONVILLE POND	041	LOW
BURRILLVILLE	ROUNDTOP BROOK	ROUND TOP POND	042	LOW
BURRILLVILLE	TARKILN BROOK	TARKILN MILL POND	049	LOW
BURRILLVILLE	TARKILN BROOK	TARKILN POND	050	LOW
BURRILLVILLE	TARKILN BROOK	NICHOLS POND	051	SIGNIFICANT
BURRILLVILLE	RANKIN BROOK	LAKE BEL AIR	054	LOW
BURRILLVILLE	PASCOAG RIVER-TRIB	KNIBB FARM POND	429	LOW
BURRILLVILLE	TARKILN BROOK-TRIB	WOONSOCKET SPORTSMEN'S CLUB POND	463	LOW
BURRILLVILLE	BLACKMORE BROOK	WAKEFIELD POND	481	LOW

2023 Dam Safety Annual Report  
Attachment

CITY/TOWN	RIVER/STREAM	DAM NAME	STATE ID	HAZARD
BURRILLVILLE	CLEAR RIVER-TRIB	BARKER FARM POND	490	LOW
BURRILLVILLE	LEESON BROOK	BUCK HILL POND	496	LOW
BURRILLVILLE	ROUNDTOP BROOK	LITTLE ROUNDTOP POND	501	LOW
BURRILLVILLE	LELAND BROOK-TRIB	SHIELDS FARM POND	506	LOW
BURRILLVILLE	BRANCH RIVER-TRIB	BLACK HUT POND	512	LOW
BURRILLVILLE	CLEAR RIVER-TRIB	LAFERRIER FARM POND	524	LOW
BURRILLVILLE	CLEAR RIVER-TRIB	ROSS POND	565	SIGNIFICANT
BURRILLVILLE	MARY BROWN BROOK	WILBUR POND	572	HIGH
BURRILLVILLE	KEACH BROOK	RICHARDSON MARSH	604	LOW
BURRILLVILLE	BRANCH RIVER-TRIB	LAPHAM	633	LOW
BURRILLVILLE	BRANCH RIVER-TRIB	MERCANTUM FARM POND	634	LOW
BURRILLVILLE	CLEAR RIVER-TRIB	KNIBB ROAD POND	638	LOW
BURRILLVILLE		OCEAN STATE POWER	766	HIGH
CENTRAL FALLS / CUMBERLAND	BLACKSTONE RIVER	VALLEY FALLS POND	063	LOW
CENTRAL FALLS / PAWTUCKET	BLACKSTONE RIVER	CENTRAL FALLS	064	LOW
CHARLESTOWN	CEDAR SWAMP BROOK	INDIAN CEDAR SWAMP	279	LOW
CHARLESTOWN	POQUIANT BROOK-TRIB	BURLINGAME RESERVATION	423	LOW
CHARLESTOWN	PASQUISET BROOK-TRIB	MCLEOD FARM POND	441	LOW
CHARLESTOWN	POQUIANT BROOK-TRIB	CLAUSEN FARM POND	457	LOW
CHARLESTOWN	CEDAR SWAMP BROOK	GOBEILLE POND	487	LOW
CHARLESTOWN	UNNAMED STREAM	KING TOM POND	576	LOW
CHARLESTOWN	NINIGRET POND-TRIB	CROSS MILLS	758	SIGNIFICANT
CHARLESTOWN / RICHMOND	PAWCATUCK RIVER	KENYON MILL POND	248	LOW
CHARLESTOWN / RICHMOND	PAWCATUCK RIVER	HORSESHOE FALLS	249	SIGNIFICANT
CHARLESTOWN / RICHMOND	PAWCATUCK RIVER	CAROLINA POND	252	LOW
CHARLESTOWN/HOPKINTON	PAWCATUCK RIVER	BURDICKVILLE	251	LOW
COVENTRY	TIOGUE RIVER-TRIB	ROPEWALK POND	083	LOW

2023 Dam Safety Annual Report  
Attachment

CITY/TOWN	RIVER/STREAM	DAM NAME	STATE ID	HAZARD
COVENTRY	PAWTUXET RIVER-SOUTH BRANCH	QUIDNICK POND UPPER	151	LOW
COVENTRY	PAWTUXET RIVER-SOUTH BRANCH	MILL POND	152	SIGNIFICANT
COVENTRY	PAWTUXET RIVER-SOUTH BRANCH	WASHINGTON POND UPPER	153	LOW
COVENTRY	PAWTUXET RIVER-NORTH BRANCH	HARRIS POND	157	LOW
COVENTRY	PAWTUXET RIVER-NORTH BRANCH	ARKWRIGHT POND	158	LOW
COVENTRY	PAWTUXET RIVER-SOUTH BRANCH	FLAT RIVER RESERVOIR	167	HIGH
COVENTRY	QUIDNICK BROOK	QUIDNICK RESERVOIR	175	SIGNIFICANT
COVENTRY	QUIDNICK BROOK	COVENTRY RESERVOIR	176	HIGH
COVENTRY	TIOGUE RIVER	TIOGUE LAKE	177	HIGH
COVENTRY	MISHNOCK RIVER	SPRING LAKE	178	LOW
COVENTRY	BLACKROCK BROOK	BLACK ROCK RESERVOIR	185	HIGH
COVENTRY	NORTHRUP BROOK	UPPER POND	186	SIGNIFICANT
COVENTRY	NORTHRUP BROOK	MIDDLE POND	187	SIGNIFICANT
COVENTRY	QUIDNICK BROOK	COVENTRY CENTER POND LOWER	191	LOW
COVENTRY	PAWTUXET RIVER-SOUTH BRANCH	CROMPTON UPPER	194	LOW
COVENTRY	PAWTUXET RIVER-SOUTH BRANCH	QUIDNICK POND LOWER	195	LOW
COVENTRY	NORTHRUP BROOK	SEARLES CAPWELL POND	197	LOW
COVENTRY	BLACK ROCK BROOK-TRIB	BLACK ROCK ICE POND	370	LOW
COVENTRY	BLACK ROCK BROOK	PEARCE POND	371	HIGH
COVENTRY	BOYD BROOK	SALISBURY POND UPPER	375	LOW
COVENTRY	BOYD BROOK	SALISBURY POND LOWER	376	LOW
COVENTRY	MCCUSTER BROOK	HAVENS POND	377	LOW
COVENTRY	MCCUSTER BROOK	MCCUSTER POND LOWER	378	LOW
COVENTRY	MCCUSTER BROOK	MCCUSTER POND UPPER	379	LOW
COVENTRY	PINE SWAMP BROOK	OLNEY-MATHEWSON MILL POND	380	LOW

2023 Dam Safety Annual Report  
Attachment

CITY/TOWN	RIVER/STREAM	DAM NAME	STATE ID	HAZARD
COVENTRY	BEAR BROOK-TRIB	ANDERSON FARM POND	433	LOW
COVENTRY	BEAR BROOK	SNOW FARM POND	477	LOW
COVENTRY	BIG RIVER-TRIB	MANNI FARM POND	495	LOW
COVENTRY	PAWTUXET RIVER-SOUTH BRANCH	HOPKINS FARM POND	498	SIGNIFICANT
COVENTRY	BUCKS HORN BROOK	NYE FARM POND	500	LOW
COVENTRY	QUIDNICK BROOK-TRIB	RUSACK FARM POND	503	LOW
COVENTRY	MOOSUP RIVER-TRIB	LUTHER FARM POND	517	LOW
COVENTRY	QUIDNICK BROOK-TRIB	LONGRIDGE WILDLIFE MARSH #2	528	LOW
COVENTRY	QUIDNICK BROOK-TRIB	LONGRIDGE WILDLIFE MARSH #1	529	LOW
COVENTRY	MOOSUP RIVER-TRIB	NEWMAN FARM POND	543	LOW
COVENTRY	ROARING BROOK	ARNOLD POND	561	HIGH
COVENTRY	ROARING BROOK	WHITFORD	562	LOW
COVENTRY	WARWICK BROOK	WATERMAN POND	563	LOW
COVENTRY	BURLINGAME BROOK	BURLINGAME POND	567	LOW
COVENTRY	ROARING BROOK	GREAT GRASS POND	593	LOW
COVENTRY	MOOSUP RIVER-TRIB	CARBUNCLE	606	LOW
COVENTRY	TIOGUE LAKE-TRIB	CENTRE OF NEW ENGLAND #1	645	SIGNIFICANT
COVENTRY	PAWTUXET RIVER-SOUTH BRANCH-TRIB	POTTER FARM #1	677	LOW
COVENTRY	PAWTUXET RIVER-SOUTH BRANCH-TRIB	POTTER FARM #2	679	LOW
COVENTRY	FLAT RIVER RESERVOIR-TRIB	TOWN FARM ROAD	680	LOW
COVENTRY	FLAT RIVER RESERVOIR-TRIB	GORTON POND	681	LOW
COVENTRY	PIERCE BROOK	MATTESON ROAD #1	684	LOW
COVENTRY	PIERCE BROOK	MATTESON ROAD #2	685	LOW
COVENTRY	MCCUSTER BROOK	HAVENS MIDDLE	686	LOW
COVENTRY	MCCUSTER BROOK	HAVENS LOWER	687	LOW
COVENTRY	FLAT RIVER RESERVOIR-TRIB	HALL CENTRAL	688	LOW
COVENTRY	FLAT RIVER RESERVOIR-TRIB	HALL LOWER	689	LOW
COVENTRY	BUCKS BROOK	KOSZELA	694	LOW
COVENTRY	ROARING BROOK	GREENE	698	LOW
COVENTRY	ROARING BROOK-TRIB	HOPKINS HOLLOW	699	LOW

2023 Dam Safety Annual Report  
Attachment

CITY/TOWN	RIVER/STREAM	DAM NAME	STATE ID	HAZARD
COVENTRY	FLAT RIVER RESERVOIR-TRIB	DUPONT	700	LOW
COVENTRY	MOOSUP RIVER	BRIGGS POND LOWER	735	LOW
COVENTRY	MOOSUP RIVER	BRIGGS POND UPPER	736	LOW
COVENTRY	TIOGUE LAKE-TRIB	DEANS	743	LOW
COVENTRY	MCCUSTER BROOK	MEDITATION	744	LOW
CRANSTON	CLARKE BROOK	CURRAN UPPER RESERVOIR	166	HIGH
CRANSTON	POCASSET RIVER	CRANSTON PRINT WORKS POND	172	HIGH
CRANSTON	CLARKE BROOK	CURRAN LOWER RESERVOIR	198	HIGH
CRANSTON	PRISON BROOK	STATE PRISON UPPER	305	LOW
CRANSTON	FENNER BROOK	STONE POND	320	HIGH
CRANSTON	MESHANTICUT BROOK	ARROW LAKE #1	335	LOW
CRANSTON	MESHANTICUT BROOK	ARROW LAKE #2	336	LOW
CRANSTON	MESHANTICUT BROOK	R.I. PRINTWORKS POND	337	LOW
CRANSTON	MESHANTICUT BROOK	COLVIN POND	338	LOW
CRANSTON	MESHANTICUT BROOK	MESHANTICUT PARK POND	340	SIGNIFICANT
CRANSTON	FURNACE HILL BROOK	SARGENT'S POND	341	LOW
CRANSTON	FURNACE HILL BROOK	POWERS POND	342	LOW
CRANSTON	FURNACE HILL BROOK	WOOD'S MILL POND	343	LOW
CRANSTON	CLARKE BROOK	CLARKE'S POND LOWER	372	LOW
CRANSTON	CLARKE BROOK	CLARKE'S POND UPPER	373	HIGH
CRANSTON	MESHANTICUT BROOK	JUDGE FARM POND	461	LOW
CRANSTON	LIPPITT BROOK	FEDOROWICZ FARM POND	505	LOW
CRANSTON	MESHANTICUT BROOK-TRIB	MARSELLA FARM POND	510	LOW
CRANSTON	MESHANTICUT BROOK	BOY SCOUTS/RT 12	656	LOW
CRANSTON	MESHANTICUT BROOK	ARROW LAKE #1.5	658	LOW
CRANSTON	MESHANTICUT BROOK	CRANSTON COUNTRY CLUB #1	682	LOW
CRANSTON	MESHANTICUT BROOK	CRANSTON COUNTRY CLUB #2	683	LOW
CRANSTON	PAWTUXET RIVER NORTH BRANCH-TRIB	CONFREDA	701	LOW
CRANSTON/WARWICK	PAWRUXET RIVER	PETTACONSETT	303	LOW
CUMBERLAND	MISCOE BROOK	MISCOE LAKE	074	HIGH
CUMBERLAND	BURNT SWAMP BROOK	KER-ANNA POND	076	LOW
CUMBERLAND	BURNT SWAMP BROOK	DIAMOND HILL RESERVOIR	077	HIGH

2023 Dam Safety Annual Report  
Attachment

CITY/TOWN	RIVER/STREAM	DAM NAME	STATE ID	HAZARD
CUMBERLAND	ABBOTT RUN	PAWTUCKET RESERVOIR	078	HIGH
CUMBERLAND	ABBOTT RUN	RAWSON POND	079	SIGNIFICANT
CUMBERLAND	ABBOTT RUN	HOWARD POND	080	LOW
CUMBERLAND	ABBOTT RUN	ROBIN HOLLOW POND	081	SIGNIFICANT
CUMBERLAND	ABBOTT RUN	HAPPY HOLLOW POND	082	SIGNIFICANT
CUMBERLAND	ABBOTT RUN	ARNOLD MILL POND	297	LOW
CUMBERLAND	BURNT SWAMP BROOK	DUHALLOW POND	350	LOW
CUMBERLAND	ABBOTT RUN-TRIB	THORNLEY FARM POND	427	LOW
CUMBERLAND	BUNGAY BROOK	CARLS POND	616	LOW
CUMBERLAND	SCOTT BROOK	SCOTT LOWER	617	LOW
CUMBERLAND	BLACKSTONE RIVER-TRIB	LOUISE POSSE CMU	618	LOW
CUMBERLAND	SCOTT BROOK	SCOTT UPPER	619	LOW
CUMBERLAND	BUNGAY BROOK	RESURRECTION CEMETERY	620	LOW
CUMBERLAND	CATAMINT BROOK	CATAMINT	756	LOW
CUMBERLAND / LINCOLN	BLACKSTONE RIVER	MANVILLE	059	LOW
CUMBERLAND / LINCOLN	BLACKSTONE RIVER	ALBION	060	LOW
CUMBERLAND / LINCOLN	BLACKSTONE RIVER	ASHTON	061	LOW
CUMBERLAND / LINCOLN	BLACKSTONE RIVER	PRATT	062	LOW
EAST GREENWICH	MASKERCHUGG RIVER	GREENWICH BLEACHERY POND	403	LOW
EAST GREENWICH	MASKERCHUGG RIVER-WEST BRANCH	GALE FARM POND UPPER	432	SIGNIFICANT
EAST GREENWICH	MASKERCHUGG RIVER-WEST BRANCH	GALE FARM POND MIDDLE	484	LOW
EAST GREENWICH	MOWNEY BROOK	SCHOLEFIELD POND	488	LOW
EAST GREENWICH	FRY BROOK	HANNAH FARM POND	492	LOW
EAST GREENWICH	MASKERCHUGG RIVER	LAS BRISAS PARK POND	515	LOW
EAST GREENWICH	FRY BROOK	KROIAN FARM POND	541	LOW
EAST GREENWICH	FRENCHTOWN BROOK	FRENCHTOWN PARK POND #1	557	LOW
EAST GREENWICH	MASKERCHUGG RIVER	PAINE'S POND	589	LOW
EAST GREENWICH	MASKERCHUGG RIVER-WEST BRANCH	GALE FARM POND LOWER	672	LOW
EAST GREENWICH	FRENCHTOWN BROOK	FRENCHTOWN ROAD	673	LOW
EAST GREENWICH	MOWNEY BROOK	MIDDLE ROAD	674	LOW

2023 Dam Safety Annual Report  
Attachment

CITY/TOWN	RIVER/STREAM	DAM NAME	STATE ID	HAZARD
EAST GREENWICH	FRY BROOK	AMERICAN POWER CONVERSION	675	LOW
EAST GREENWICH	FRENCHTOWN BROOK	WIGHTMANS CORNER	713	LOW
EAST PROVIDENCE	TEN MILE RIVER	CENTRAL POND	404	LOW
EAST PROVIDENCE	TEN MILE RIVER	HUNTS MILL POND	405	LOW
EAST PROVIDENCE	TEN MILE RIVER	OMEGA POND	406	LOW
EAST PROVIDENCE	TEN MILE RIVER	JAMES V TURNER RESERVOIR	407	HIGH
EAST PROVIDENCE	RUNNINS RIVER	STANDARD OIL POND	410	LOW
EAST PROVIDENCE	SEEKONK RIVER-TRIB	BUCKLIN POINT	446	HIGH
EAST PROVIDENCE	WILLETT BROOK	WILLETT POND UPPER	590	LOW
EAST PROVIDENCE	WILLETT BROOK	WILLETT POND LOWER	591	LOW
EAST PROVIDENCE	CENTRAL POND-TRIB	HASBRO	659	LOW
EAST PROVIDENCE	RUNNINS RIVER-TRIB	GATE OF HEAVEN CEMETERY	660	LOW
EXETER	CONGDON RIVER	MONEY SWAMP POND	182	LOW
EXETER	CONGDON RIVER	MILLBROOK POND	188	LOW
EXETER	PARRISS BROOK	PRATT POND	205	LOW
EXETER	WOODY HILL BROOK	DEXTER POND	208	LOW
EXETER	BREAKHEART BROOK	BREAKHEART POND	214	LOW
EXETER	ROARING BROOK	AUSTIN FARM POND	218	LOW
EXETER	ROARING BROOK	BOONE LAKE	219	HIGH
EXETER	ROARING BROOK	BARBERVILLE MILL POND	220	LOW
EXETER	ROARING BROOK	BROWNING MILL POND	221	SIGNIFICANT
EXETER	BEAVER RIVER	JAMES POND	231	LOW
EXETER	QUEEN RIVER	RODMAN SAWMILL POND	237	LOW
EXETER	QUEEN RIVER	EDWARD'S POND	238	SIGNIFICANT
EXETER	CHIPUXET RIVER	SLOCUM RESERVOIR	239	HIGH
EXETER	CHIPUXET RIVER	YORKER MILL POND	240	HIGH
EXETER	FISHERSVILLE BROOK	GRINNELL UPPER POND	241	LOW
EXETER	FISHERSVILLE BROOK	GRINNELL LOWER POND	242	LOW
EXETER	SODOM BROOK	DOLLY POND	243	LOW
EXETER	LOCKE BROOK	SHERMAN SHINGLE MILL POND	244	LOW
EXETER	ROARING BROOK	AUSTIN UPPER POND	382	LOW
EXETER	LOCKE BROOK	GRINNEL'S SAWMILL POND	400	LOW
EXETER	QUEEN RIVER-TRIB	WARWICK SPORTSMEN'S ASSOC. POND	448	LOW

2023 Dam Safety Annual Report  
Attachment

CITY/TOWN	RIVER/STREAM	DAM NAME	STATE ID	HAZARD
EXETER	BREAKHEART BROOK	FROSTY HOLLOW POND	469	LOW
EXETER	LOCKE BROOK	METCALF WILDLIFE MARSH	527	HIGH
EXETER	WOODY HILL BROOK	MT. TOM WILDLIFE MARSH	532	LOW
EXETER	SODOM BROOK	HALLVILLE POND	571	LOW
EXETER	ROARING BROOK	BARBERVILLE MILL LOWER	603	LOW
EXETER	CHIPUXET RIVER-TRIB	SLOCUM ROAD LOWER	711	LOW
EXETER	QUEEN RIVER	EXETER COUNTRY CLUB	714	LOW
EXETER	QUEEN RIVER	WILLIAM REYNOLDS ROAD POND	715	LOW
EXETER	LOCKE BROOK	SHERMAN SHINGLE MILL UPPER	716	LOW
EXETER	SODOM BROOK	SODOM TRAIL LOWER	719	LOW
EXETER	ROARING BROOK	BROWNING MILL BYPASS POND	722	LOW
EXETER	RAKE FACTORY BROOK	GAVITT	726	LOW
EXETER	RAKE FACTORY BROOK	STINKY	741	LOW
EXETER	SODOM BROOK	SCREAMING WOMAN POND	748	LOW
EXETER	QUEEN RIVER	NEW ROAD POND	755	LOW
FOSTER	WESTCONNAUG BROOK	WESTCONNAUG RESERVOIR	163	HIGH
FOSTER	PONAGANSET RIVER	HOPKINS MILL POND	180	LOW
FOSTER	SHIPPEE BROOK	YOUNG'S POND	347	LOW
FOSTER	PAINE BROOK	HUTCHINSON POND	348	LOW
FOSTER	HEMLOCK BROOK	SPEAR POND	349	HIGH
FOSTER	DOLLY BROOK	LILY POND	356	LOW
FOSTER	DOLLY COLE BROOK-TRIB	HOPKINS AXE FACTORY POND	357	LOW
FOSTER	DOLLY COLE BROOK	CRANSTON FISH & GAME ASSOC. POND	358	LOW
FOSTER	MOOSUP RIVER-TRIB	MANTON SPORTSMEN'S CLUB POND	453	LOW
FOSTER	QUADUCK BROOK-TRIB	KNOWLES FARM POND	459	LOW
FOSTER	WEST MEADOW BROOK-TRIB	BASSETT FARM POND	478	LOW
FOSTER	MOOSUP RIVER-TRIB	HARRINGTON FARM POND	489	LOW
FOSTER	PAINE BROOK-TRIB	SPENCER FARM POND #1	502	LOW
FOSTER	HEMLOCK BROOK	GORHAM FARM POND	507	LOW
FOSTER	WILBUR HOLLOW BROOK-TRIB	HAWKINS FARM POND	516	LOW
FOSTER	PONAGANSET RIVER-TRIB	SPENCER FARM POND #2	518	LOW
FOSTER	TURKEY MEADOW BROOK	HEBERT FARM POND	522	LOW
FOSTER	MOOSUP RIVER-TRIB	GORHAM, N. FARM POND	526	SIGNIFICANT



2023 Dam Safety Annual Report  
Attachment

CITY/TOWN	RIVER/STREAM	DAM NAME	STATE ID	HAZARD
FOSTER	MOOSUP RIVER-TRIB	PORTER POND	564	LOW
FOSTER	QUADUCK BROOK-TRIB	CUCUMBER HILL ROAD	639	LOW
FOSTER	MOOSUP RIVER-TRIB	NORTH ROAD POND	640	LOW
FOSTER	HEMLOCK BROOK	SALISBURY ROAD POND	641	LOW
FOSTER	MOOSUP RIVER	CLARK POND	642	LOW
FOSTER	MOOSUP RIVER-TRIB	MOOSUP VALLEY POND	690	LOW
FOSTER	MOOSUP RIVER-TRIB	JOHNSON ROAD POND	691	LOW
FOSTER	MOOSUP RIVER-TRIB	FOSTER COUNTRY CLUB	692	LOW
FOSTER / SCITUATE	DOLLY COLE BROOK	BRUSH MEADOW POND	355	LOW
GLOCESTER	BRANDY BROOK	BURLINGAME RESERVOIR LOWER	017	LOW
GLOCESTER	BRANDY BROOK	BURLINGAME RESERVOIR UPPER	018	HIGH
GLOCESTER	BRANDY BROOK	SWEET'S MILL POND	019	LOW
GLOCESTER	CHEPACHET RIVER	CHERRY VALLEY POND	021	SIGNIFICANT
GLOCESTER	CHEPACHET RIVER	KEECH POND	022	HIGH
GLOCESTER	CHEPACHET RIVER	SMITH + SAYLES RESERVOIR	023	SIGNIFICANT
GLOCESTER	STINGO BROOK-TRIB	SHINGLE MILL POND UPPER	024	LOW
GLOCESTER	CHEPACHET RIVER	MOWRY POND	025	LOW
GLOCESTER	CHEPACHET RIVER	VALENTINE MILL POND	026	LOW
GLOCESTER	SUCKER BROOK	STEERE'S SAWMILL POND	028	LOW
GLOCESTER	SPRING GROVE BROOK	MOWER POND	029	SIGNIFICANT
GLOCESTER	SUCKER BROOK	SPRING GROVE POND	030	LOW
GLOCESTER	SPRING GROVE BROOK	OLD MILL POND	031	LOW
GLOCESTER	SPRING GROVE BROOK	SNAKESKIN POND	032	SIGNIFICANT
GLOCESTER	CHEPACHET RIVER	STEERE'S POND LOWER	033	LOW
GLOCESTER	PAINE BROOK	MOWRY-PAINE POND	052	LOW
GLOCESTER	PONAGANSET RIVER	PONAGANSET RESERVOIR	165	HIGH
GLOCESTER	PEEPTOAD BROOK	SANDY BROOK POND #1	352	LOW
GLOCESTER	PEEPTOAD BROOK	SANDY BROOK POND #2	353	LOW
GLOCESTER	PEEPTOAD BROOK	COOMER LAKE	354	SIGNIFICANT
GLOCESTER	SUCKER BROOK	SUCKER BROOK BRIDGE POND	381	SIGNIFICANT
GLOCESTER	PECKHAM BROOK	PECKHAM POND #1	383	LOW
GLOCESTER	PECKHAM BROOK	PECKHAM POND #2	384	LOW
GLOCESTER	PECKHAM BROOK	PECKHAM POND #3	385	LOW

2023 Dam Safety Annual Report  
Attachment

CITY/TOWN	RIVER/STREAM	DAM NAME	STATE ID	HAZARD
GLOCESTER	PECKHAM BROOK	PECKHAM POND #4	386	LOW
GLOCESTER	PECKHAM BROOK-TRIB	PECKHAM POND #5	387	LOW
GLOCESTER	SHADY OAK BROOK	FACTORY MUTUAL RESEARCH CTR LOWER POND	392	LOW
GLOCESTER	SPRING GROVE BROOK-TRIB	NEW POND	397	LOW
GLOCESTER	SAUNDERS BROOK-TRIB	O'REILLY POND	398	LOW
GLOCESTER	MARY BROWN BROOK	LAKE WASHINGTON	401	HIGH
GLOCESTER	TARKILN BROOK-TRIB	THOMPSON POND	414	LOW
GLOCESTER	SPRING GROVE BROOK-TRIB	DAVIS FARM POND	434	LOW
GLOCESTER	CADY BROOK	DURFEE HILL WILDLIFE MARSH #2	499	SIGNIFICANT
GLOCESTER	MOSQUITOHAWK BROOK-TRIB	LAKE ALDERSGATE	514	SIGNIFICANT
GLOCESTER	MARY BROWN BROOK	HAWKINS POND	555	HIGH
GLOCESTER	MARY BROWN BROOK	CLARKVILLE POND	556	HIGH
GLOCESTER	MARY BROWN BROOK	BOWDISH RESERVOIR	566	HIGH
GLOCESTER	CHEPACHET RIVER-TRIB	WRIGHT, T. FARM POND	587	SIGNIFICANT
GLOCESTER	SPRING GROVE BROOK	DAVID KING FARM POND	594	SIGNIFICANT
GLOCESTER	CADY BROOK	MOWRY MEADOW	600	LOW
GLOCESTER	CADY BROOK-TRIB	DURFEE HILL UPPER	601	LOW
GLOCESTER	CADY BROOK-TRIB	DURFEE HILL LOWER	602	LOW
GLOCESTER	SPRING GROVE BROOK	LEE DRIVE POND	635	LOW
GLOCESTER	CADY BROOK	WHITES POND	636	LOW
GLOCESTER	HANNAH BROOK	PONAGANSET SCHOOL POND	637	LOW
GLOCESTER	SHADY OAK BROOK	FACTORY MUTUAL RESEARCH CTR UPPER POND	707	LOW
GLOCESTER	PONAGANSET RESERVOIR-TRIB	TIN SHACK	725	LOW
GLOCESTER	MARY BROWN BROOK	BOWDISH LOWER	727	HIGH
GLOCESTER	CADY BROOK-TRIB	ANDREWS POND	750	LOW
GLOCESTER	MARY BROWN BROOK	ROUTE 44 POND	759	LOW
GLOCESTER / SMITHFIELD	STILLWATER RIVER	WATERMAN LAKE	111	HIGH
HOPKINTON	WOOD RIVER	WYOMING POND LOWER	217	LOW
HOPKINTON	MOSCOW BROOK	MOSCOW POND	222	LOW
HOPKINTON	MOSCOW BROOK	CENTERVILLE POND	223	LOW
HOPKINTON	MOSCOW BROOK	ROCKVILLE POND	224	LOW

2023 Dam Safety Annual Report  
Attachment

CITY/TOWN	RIVER/STREAM	DAM NAME	STATE ID	HAZARD
HOPKINTON	MOSCOW BROOK	WINCHECK POND	225	SIGNIFICANT
HOPKINTON	WINCHECK BROOK	YAWGOOG POND	226	HIGH
HOPKINTON	BLUE POND BROOK	ASHVILLE POND	227	SIGNIFICANT
HOPKINTON	BLUE POND BROOK	LOWER MILL POND	228	LOW
HOPKINTON	BLUE POND BROOK	BLUE POND	229	SIGNIFICANT
HOPKINTON	BRUSHY BROOK	LOCUSTVILLE POND	262	HIGH
HOPKINTON	ASHAWAY RIVER	BETHEL POND	264	LOW
HOPKINTON	ASHAWAY RIVER	ASHAWAY MILL POND	265	LOW
HOPKINTON	ASHAWAY RIVER	ASHAWAY LINE POND	266	LOW
HOPKINTON	PARMENTER BROOK	SMITH'S ICE POND	272	LOW
HOPKINTON	TOMAUQUAG BROOK-TRIB	HARRIS POND	274	SIGNIFICANT
HOPKINTON	CANONCHET BROOK	LINEWALK POND	275	LOW
HOPKINTON	KNAPP BROOK	KNAPP POND	276	LOW
HOPKINTON	BRUSHY BROOK-TRIB	LANGWORTHY POND	285	SIGNIFICANT
HOPKINTON	MOSCOW BROOK	PINEDALE MILL POND	286	LOW
HOPKINTON	BLUE POND BROOK	LONG POND	287	LOW
HOPKINTON	BLUE POND BROOK	UNION POND	288	LOW
HOPKINTON	WINCHECK POND-TRIB	GRASSY	289	LOW
HOPKINTON	ROARING BROOK	ARCADIA MILL LOWER	402	LOW
HOPKINTON	ASHAWAY RIVER-TRIB	COTTRELL FARM POND	430	LOW
HOPKINTON	CANONCHET BROOK-TRIB	HOXIE FARM POND	440	SIGNIFICANT
HOPKINTON	ASHAWAY RIVER-TRIB	MAPLE LAWN FARM POND	472	LOW
HOPKINTON	TOMAUQUAG BROOK-TRIB	JAMES FARM POND	494	LOW
HOPKINTON	GLADE BROOK-TRIB	LABRECQUE FARM POND	508	LOW
HOPKINTON	BLUE POND BROOK-TRIB	SILLMAN WILDLIFE MARSH	530	LOW
HOPKINTON	TOMAUQUAG BROOK-TRIB	LEWIS, DONALD WILDLIFE MARSH	533	LOW
HOPKINTON	GLADE BROOK-TRIB	ASHAWAY SPORTSMAN'S CLUB MARSH	560	LOW
HOPKINTON	MOSCOW BROOK	SPRING STREET POND	721	LOW
HOPKINTON	TOMAUQUAG BROOK	VEILED OUTLET	724	LOW
HOPKINTON / RICHMOND	WOOD RIVER	BARBERVILLE POND	215	SIGNIFICANT
HOPKINTON / RICHMOND	WOOD RIVER	WYOMING UPPER	216	HIGH
HOPKINTON / RICHMOND	WOOD RIVER	HOPE VALLEY MILL POND	245	LOW
HOPKINTON / RICHMOND	WOOD RIVER	ALTON POND	247	SIGNIFICANT

2023 Dam Safety Annual Report  
Attachment

CITY/TOWN	RIVER/STREAM	DAM NAME	STATE ID	HAZARD
HOPKINTON / RICHMONE	WOOD RIVER	WOODVILLE POND	246	LOW
HOPKINTON / WESTERLY	PAWCATUCK RIVER	BRADFORD POND	253	LOW
JAMESTOWN	JAMESTOWN BROOK	JAMESTOWN RESERVOIR	574	SIGNIFICANT
JAMESTOWN	JAMESTOWN BROOK	JAMESTOWN LOWER RESERVOIR	575	SIGNIFICANT
JAMESTOWN	JAMESTOWN BROOK	RAINBOW UPPER	651	LOW
JAMESTOWN	JAMESTOWN BROOK	RAINBOW LOWER	652	LOW
JAMESTOWN	UNNAMED	TEFFT POND	738	LOW
JAMESTOWN	UNNAMED	W REACH DRIVE POND	739	LOW
JOHNSTON	ASSAPUMPSET BROOK	BELKNAP POND	127	SIGNIFICANT
JOHNSTON	DRY BROOK	OAK SWAMP RESERVOIR	168	HIGH
JOHNSTON	DRY BROOK	ALMY RESERVOIR	169	HIGH
JOHNSTON	CEDAR SWAMP BROOK	SIMMONS UPPER RESERVOIR	170	HIGH
JOHNSTON	CEDAR SWAMP BROOK	SIMMONS LOWER RESERVOIR	171	HIGH
JOHNSTON	POCASSET RIVER-TRIB	SAMPSON-ALMY POND	307	LOW
JOHNSTON	POCASSET RIVER	POCASSET POND	310	SIGNIFICANT
JOHNSTON	POCASSET RIVER	BROWN SAWMILL POND	311	LOW
JOHNSTON	DRY BROOK	HUGHESDALE POND LOWER	312	LOW
JOHNSTON	DRY BROOK	HUGHESDALE POND UPPER	313	HIGH
JOHNSTON	SIMMONS BROOK	PIERCE UPPER	314	LOW
JOHNSTON	SIMMONS BROOK	PIERCE POND LOWER	315	LOW
JOHNSTON	SIMMONS BROOK	VICTORIA MILL	317	LOW
JOHNSTON	SIMMONS BROOK	PRISCILLA WORSTED	319	LOW
JOHNSTON	ASSAPUMPSET BROOK	CAESARVILLE POND	323	SIGNIFICANT
JOHNSTON	MOSWANSICUT BROOK	KIMBALL RESERVOIR	346	SIGNIFICANT
JOHNSTON	POCASSET RIVER	MEMORIAL PARK POND	422	LOW
JOHNSTON	POCASSET RIVER-TRIB	DEXTER FARM POND	504	SIGNIFICANT
JOHNSTON	REAPER BROOK	STAMP FARM POND	523	LOW
JOHNSTON	POCASSET RIVER	POCASSET UPPER	647	LOW
JOHNSTON / NORTH PROVIDENCE	WOONASQUATUCKET RIVER	GREYSTONE	131	LOW
JOHNSTON / NORTH PROVIDENCE	WOONASQUATUCKET RIVER	LYMANSVILLE	134	LOW
JOHNSTON / PROVIDENCE	WOONASQUATUCKET RIVER	MANTON MILL POND	135	LOW

2023 Dam Safety Annual Report  
Attachment

CITY/TOWN	RIVER/STREAM	DAM NAME	STATE ID	HAZARD
LINCOLN	MUSSEY BROOK	MEADER POND	086	LOW
LINCOLN	MOSHASSUCK RIVER	BUTTERFLY POND	097	HIGH
LINCOLN	MOSHASSUCK RIVER	PEACE POND	098	LOW
LINCOLN	MOSHASSUCK RIVER	MOFFETT POND	099	HIGH
LINCOLN	MOSHASSUCK RIVER-TRIB	GOLDFISH POND	100	LOW
LINCOLN	MOSHASSUCK RIVER	BARNEY POND	101	HIGH
LINCOLN	THREADMILL BROOK	OLNEY POND	102	HIGH
LINCOLN	MOSHASSUCK RIVER	BLEACHERY POND	104	HIGH
LINCOLN	MOSHASSUCK RIVER	LIMEROCK RESERVOIR	295	HIGH
LINCOLN	HANDY BROOK	HANDY POND LOWER	390	LOW
LINCOLN	HANDY BROOK	HANDY POND UPPER	391	HIGH
LINCOLN	MOSHASSUCK RIVER-TRIB	BRIDLEWOOD POND	408	HIGH
LINCOLN	MUSSEY BROOK	MEMORIAL PARK	465	LOW
LINCOLN	THREADMILL BROOK	LINCOLN WOODS CIRCULATION	607	LOW
LINCOLN	WEST RIVER-TRIB	CCRI UPPER	625	LOW
LINCOLN	WEST RIVER-TRIB	CCRI LOWER	626	LOW
LINCOLN	WEST RIVER-TRIB	LINCOLN DOWNS	627	LOW
LINCOLN	MOSHASSUCK RIVER-TRIB	BRIDLEWOOD UPPER END	649	HIGH
LINCOLN	MOSHASSUCK RIVER	OLD LOUISUISSET ROAD POND	653	LOW
LINCOLN / NORTH SMITHFIELD	CROOKFALL BROOK	WOONSOCKET RESERVOIR # 1	070	HIGH
LITTLE COMPTON	COLD BROOK	SIMMONS POND	474	SIGNIFICANT
LITTLE COMPTON	UNNAMED STREAM	SHERER POND	483	LOW
LITTLE COMPTON	PACHET BROOK	WATSON, HAROLD E, RESERVOIR	485	HIGH
LITTLE COMPTON	COLD BROOK	SIMMONS #2	609	LOW
LITTLE COMPTON	COLD BROOK	SIMMONS #3	610	LOW
LITTLE COMPTON	COLD BROOK	SIMMONS #4	611	LOW
LITTLE COMPTON	COLD BROOK	SIMMONS #5	612	LOW
LITTLE COMPTON	COLD BROOK	SIMMONS #6	613	LOW
LITTLE COMPTON	COLD BROOK	SIMMONS #7	614	LOW
LITTLE COMPTON	ADAMSVILLE BROOK	ADAMSVILLE POND	746	SIGNIFICANT
LITTLE COMPTON	LONG POND-TRIB	SAKONNET GOLF COURSE WATERING HOLE	747	LOW
MIDDLETOWN	UNNAMED STREAM	WANUMETONOMY POND	475	LOW

2023 Dam Safety Annual Report  
Attachment

CITY/TOWN	RIVER/STREAM	DAM NAME	STATE ID	HAZARD
MIDDLETOWN	PARADISE BROOK	NELSON POND	582	HIGH
MIDDLETOWN	MAIDFORD BROOK	GARDINER POND	583	HIGH
MIDDLETOWN	BAILEY BROOK	EASTON POND NORTH	584	HIGH
MIDDLETOWN	EAST PASSAGE-TRIB	PRESCOTT FARM	740	LOW
MIDDLETOWN	LITTLE CREEK	NEWPORT MEMORIAL CEMETERY	751	LOW
NARRAGANSETT	CROOKED BROOK	CROOKED BROOK POND	509	LOW
NARRAGANSETT	DEAD MAN BROOK	MAINELLI FARM POND	545	LOW
NARRAGANSETT	CROOKED BROOK-TRIB	SPRAGUE POND LOWER	732	LOW
NARRAGANSETT	CROOKED BROOK-TRIB	SPRAGUE POND	733	SIGNIFICANT
NARRAGANSETT	PETTAQUAMSQUITT RIVER-TRIB	CRYING BOG	757	LOW
NEW SHOREHAM	MILL TAIL BROOK	BLOCK ISLAND ROD & GUN CLUB POND	424	SIGNIFICANT
NEW SHOREHAM	MILL TAIL BROOK	MILL	765	SIGNIFICANT
NEWPORT / MIDDLETOWN	BAILEY BROOK	EASTON POND SOUTH	585	HIGH
NORTH KINGSTOWN	PETTAQUAMSCUTT RIVER-TRIB	MAYO FARM POND	439	LOW
NORTH KINGSTOWN	MATTATUXET RIVER	SILVER SPRING LAKE	444	HIGH
NORTH KINGSTOWN	WANNACHECOME CUT BROOK	WERTZ + VIAL POND	471	LOW
NORTH KINGSTOWN	MATTATUXET RIVER-TRIB	BALD HILL NURSERY POND	497	LOW
NORTH KINGSTOWN	MATTATUXET RIVER	CARR POND	513	HIGH
NORTH KINGSTOWN	DUCK COVE BROOK-TRIB	MILL POND	536	LOW
NORTH KINGSTOWN	ANNAQUATUCKET RIVER	HAMILTON RESERVOIR	550	SIGNIFICANT
NORTH KINGSTOWN	POTOWOMUT RIVER	POTOWOMUT POND	551	LOW
NORTH KINGSTOWN	SAND HILL BROOK	TAYLOR POND	552	LOW
NORTH KINGSTOWN	ANNAQUATUCKET RIVER	BELLEVILLE POND	553	SIGNIFICANT
NORTH KINGSTOWN	SAND HILL BROOK	DAVISVILLE MILL POND	569	LOW
NORTH KINGSTOWN	ANNAQUATUCKET RIVER	RODMAN MILL	615	HIGH
NORTH KINGSTOWN	CHIPUXET RIVER-TRIB	SLOCUM WOODS	693	HIGH
NORTH KINGSTOWN	SAND HILL BROOK	SANDHILL	703	LOW
NORTH KINGSTOWN	ANNAQUATUCKET RIVER-TRIB	SECRET LAKE	704	SIGNIFICANT
NORTH KINGSTOWN	ANNAQUATUCKET RIVER-TRIB	SECRET LAKE LOWER	705	LOW
NORTH KINGSTOWN	ANNAQUATUCKET RIVER	SIERSTORPFF	706	LOW
NORTH KINGSTOWN	MATTATUXET RIVER	SHADY LEA MILL	708	HIGH
NORTH KINGSTOWN	ANNAQUATUCKET RIVER-TRIB	KETTLE HOLE	709	LOW
NORTH KINGSTOWN	CHIPUXET RIVER-TRIB	SLOCUM ROAD UPPER	710	HIGH

2023 Dam Safety Annual Report  
Attachment

CITY/TOWN	RIVER/STREAM	DAM NAME	STATE ID	HAZARD
NORTH KINGSTOWN	SOLVER SPRING LAKE-TRIB	PENDAR ROAD	712	LOW
NORTH KINGSTOWN		SODCO	767	LOW
NORTH PROVIDENCE	WEST RIVER	WENSCOTT RESERVOIR	084	HIGH
NORTH PROVIDENCE	WEST RIVER	GENEVA SPORTSMEN'S CLUB POND	085	LOW
NORTH PROVIDENCE	SHIPPEE BROOK	SHIPPEE POND	095	LOW
NORTH PROVIDENCE	WOONASQUATUCKET RIVER	ALLENDALE POND	133	LOW
NORTH PROVIDENCE	WEST RIVER	DOUGLAS TERRACE POND	654	LOW
NORTH PROVIDENCE	WEST RIVER-TRIB	LOUISQUISSET FLOOD CONTROL	760	HIGH
NORTH PROVIDENCE / JOHNSTON	WOONASQUATUCKET RIVER	CENTREDALE	132	LOW
NORTH SMITHFIELD	BRANCH RIVER	SLATERSVILLE RESERVOIR UPPER	043	HIGH
NORTH SMITHFIELD	BRANCH RIVER	SLATERSVILLE UPPER TRENCH RETURN NO. 1	044	LOW
NORTH SMITHFIELD	BRANCH RIVER	SLATERSVILLE UPPER INTERMEDIATE	045	LOW
NORTH SMITHFIELD	BRANCH RIVER	SLATERSVILLE RESERVOIR MIDDLE	046	HIGH
NORTH SMITHFIELD	BRANCH RIVER	SLATERSVILLE RESERVOIR LOWER	047	SIGNIFICANT
NORTH SMITHFIELD	BRANCH RIVER	FORESTDALE POND	048	HIGH
NORTH SMITHFIELD	TROUT BROOK	O'HARA POND	053	LOW
NORTH SMITHFIELD	DAWLEY BROOK	PRATT POND	055	LOW
NORTH SMITHFIELD	CHERRY BROOK	TODD'S POND	067	LOW
NORTH SMITHFIELD	WOONASQUATUCKET RIVER	PRIMROSE POND LOWER	107	LOW
NORTH SMITHFIELD	BLACKSTONE RIVER	BLACKSTONE	393	LOW
NORTH SMITHFIELD	TROUT BROOK	FLY & FISH CLUB	416	LOW
NORTH SMITHFIELD	WOONASQUATUCKET RIVER	MINGOLA POND	417	LOW
NORTH SMITHFIELD	WOONASQUATUCKET RIVER	CESARIO POND	418	LOW
NORTH SMITHFIELD	WOONASQUATUCKET RIVER	GARDNER FARM POND	460	LOW
NORTH SMITHFIELD	RANKIN BROOK	WINSOR FARM POND	491	LOW
NORTH SMITHFIELD	TROUT BROOK	FORT FARM POND #1	539	LOW
NORTH SMITHFIELD	UNNAMED STREAM	CHESTER ST. POND	599	LOW
NORTH SMITHFIELD	TROUT BROOK	BOURGET COURT POND	631	LOW
NORTH SMITHFIELD	RANKIN BROOK	KAREN MARIE DRIVE POND	632	LOW
NORTH SMITHFIELD / SMITHFIELD	CROOKFALL BROOK	WOONSOCKET RESERVOIR # 3	068	HIGH
PAWTUCKET	BLACKSTONE RIVER	PAWTUCKET UPPER	065	LOW

2023 Dam Safety Annual Report  
Attachment

CITY/TOWN	RIVER/STREAM	DAM NAME	STATE ID	HAZARD
PAWTUCKET	BLACKSTONE RIVER	PAWTUCKET LOWER	066	LOW
PAWTUCKET	TEN MILE RIVER	LEBANON MILL	293	LOW
PAWTUCKET	TEN MILE RIVER	TEN MILE RESERVATION	294	LOW
PAWTUCKET	TEN MILE RIVER	SLATER PARK	702	LOW
PORTSMOUTH	LAWTON VALLEY BROOK	LAWTON VALLEY RESERVOIR	395	HIGH
PORTSMOUTH	UNNAMED STREAM	HIRSCH FARM POND	438	LOW
PORTSMOUTH	BARKER BROOK	PORTSMOUTH ABBEY POND	546	LOW
PORTSMOUTH	LAWTON VALLEY BROOK	SISSON POND	580	HIGH
PORTSMOUTH	LAWTON VALLEY BROOK	ST MARYS POND	581	HIGH
PORTSMOUTH	EAST PASSAGE-TRIB	MELVILLE #1	761	SIGNIFICANT
PORTSMOUTH	EAST PASSAGE-TRIB	MELVILLE #2	762	LOW
PORTSMOUTH	EAST PASSAGE-TRIB	MELVILLE #3	763	LOW
PROVIDENCE	WEST RIVER	WHIPPLE POND	090	LOW
PROVIDENCE	WEST RIVER	WANSKUCK POND	091	LOW
PROVIDENCE	WEST RIVER-TRIB	CANADA UPPER POND	093	SIGNIFICANT
PROVIDENCE	WEST RIVER	CANADA LOWER POND	094	LOW
PROVIDENCE	MOSHASSUCK RIVER	AMERICAN SCREW	106	LOW
PROVIDENCE	WOONASQUATUCKET RIVER	ATLANTIC MILLS POND	138	LOW
PROVIDENCE	WOONASQUATUCKET RIVER	RISING SUN POND	140	LOW
PROVIDENCE	MASHAPAUG BROOK	MASHAPAUG POND	174	LOW
PROVIDENCE	MASHAPAUG BROOK	CUNLIFF POND	300	SIGNIFICANT
PROVIDENCE	SEEKONK-TRIB	BUTLER	771	LOW
RICHMOND	BEAVER RIVER	DECAPPETT POND	230	LOW
RICHMOND	BEAVER RIVER	TUG HOLLOW POND	232	LOW
RICHMOND	WHITE BROOK	LILLIBRIDGE POND	259	LOW
RICHMOND	WHITE BROOK-TRIB	WELLS POND	260	LOW
RICHMOND	WHITE BROOK	WHITE'S POND	261	HIGH
RICHMOND	MEADOW BROOK	WOOD RIVER JUNCTION	273	SIGNIFICANT
RICHMOND	WHITE BROOK	TANNER POND	280	LOW
RICHMOND	DIAMOND BROOK	HABEREK FARM POND	458	LOW
RICHMOND	WHITE BROOK	DUCK POND	466	LOW
RICHMOND	DIAMOND BROOK	CAROLINA TROUT POND	476	LOW
RICHMOND	UNNAMED	BAILEY	717	LOW



2023 Dam Safety Annual Report  
Attachment

CITY/TOWN	RIVER/STREAM	DAM NAME	STATE ID	HAZARD
RICHMOND	BEAVER RIVER-TRIB	TUG HOLLOW ROAD POND	718	LOW
RICHMOND		CEKALA	769	LOW
SCITUATE	PAWTUXET RIVER-NORTH BRANCH	HOPE	160	SIGNIFICANT
SCITUATE	PAWTUXET RIVER-NORTH BRANCH	GAINER MEMORIAL	161	HIGH
SCITUATE	MOSWANSICUT BROOK	MOSWANSICUT POND	162	SIGNIFICANT
SCITUATE	PONAGANSET RIVER	BARDEN RESERVOIR	164	SIGNIFICANT
SCITUATE	PAWTUXET RIVER	FISKEVILLE	192	LOW
SCITUATE	WILBUR HOLLOW BROOK	BURTON POND	329	LOW
SCITUATE	WILBUR HOLLOW BROOK	POTTERVILLE POND	330	LOW
SCITUATE	WILBUR HOLLOW BROOK	POTTER POND	331	LOW
SCITUATE	WILBUR HOLLOW BROOK	ABNER'S POND	332	LOW
SCITUATE	WESTCONNAUG BROOK	PEABODY RESERVOIR LOWER	344	LOW
SCITUATE	WESTCONNAUG BROOK	JORDAN POND	345	SIGNIFICANT
SCITUATE	PEEPTOAD BROOK	PEEPTOAD POND	351	SIGNIFICANT
SCITUATE	PAWTUXET RIVER-NORTH BRANCH	HORSESHOE	360	SIGNIFICANT
SCITUATE	BRANDY BROOK	PINE SWAMP RESERVOIR #1	361	SIGNIFICANT
SCITUATE	UNNAMED STREAM	PINE SWAMP RESERVOIR #2 (AUX TO #1)	362	LOW
SCITUATE	BRANDY BROOK	DUCK POND	363	LOW
SCITUATE	BRANDY BROOK	MATHEWSON POND	364	LOW
SCITUATE	KING BROOK	KING POND	367	LOW
SCITUATE	WILBUR HOLLOW BROOK-TRIB	PECK FARM POND	511	LOW
SCITUATE	COLVIN BROOK-TRIB	KEEBLER FARM POND	542	LOW
SCITUATE	CORK BROOK	SUDDARD LANE POND	643	LOW
SCITUATE	SPRUCE BROOK	FOUR CORNERS	644	LOW
SCITUATE	SCITUATE RESERVOIR-TRIB	THEATER POND	646	LOW
SCITUATE	BRANDY BROOK	SHOESTRING MILL	648	SIGNIFICANT
SCITUATE	RUSH BROOK	TEDDY DEXTER	650	LOW
SCITUATE	KENT BROOK	BETTY	657	LOW
SCITUATE	BRANDY BROOK	SAUNDERSVILLE	754	LOW
SMITHFIELD	WEST RIVER	GOULD POND	096	LOW

2023 Dam Safety Annual Report  
Attachment

CITY/TOWN	RIVER/STREAM	DAM NAME	STATE ID	HAZARD
SMITHFIELD	WOONASQUATUCKET RIVER	STILLWATER RESERVOIR	108	HIGH
SMITHFIELD	WOONASQUATUCKET RIVER	STILLWATER POND	109	SIGNIFICANT
SMITHFIELD	WOONASQUATUCKET RIVER	CAPRON POND	110	LOW
SMITHFIELD	STILLWATER RIVER	GREENVILLE MILL POND	112	LOW
SMITHFIELD	STILLWATER RIVER	KNIGHT MILL POND	113	LOW
SMITHFIELD	STILLWATER RIVER	STILLWATER MILL POND	114	LOW
SMITHFIELD	STILLWATER RIVER-TRIB	SLACK RESERVOIR	115	HIGH
SMITHFIELD	SLACK RESERVOIR BROOK	HOPKINS POND	116	HIGH
SMITHFIELD	SLACK RESERVOIR BROOK	MOWRY POND	117	LOW
SMITHFIELD	HAWKINS BROOK	SEBILLE POND	119	LOW
SMITHFIELD	STILLWATER RIVER-TRIB	SPRAGUE UPPER RESERVOIR	120	HIGH
SMITHFIELD	STILLWATER RIVER-TRIB	SPRAGUE LOWER RESERVOIR	121	HIGH
SMITHFIELD	REAPER BROOK	GRANITE MILL POND	122	LOW
SMITHFIELD	REAPER BROOK	HAWKINS POND	123	SIGNIFICANT
SMITHFIELD	REAPER BROOK	REAPER POND	124	LOW
SMITHFIELD	REAPER BROOK	MOUNTAINDALE RESERVOIR	125	LOW
SMITHFIELD	WOONASQUATUCKET RIVER	GEORGIAVILLE POND	126	HIGH
SMITHFIELD	WOONASQUATUCKET RIVER	ESMOND MILL UPPER POND	128	LOW
SMITHFIELD	WOONASQUATUCKET RIVER	ESMOND MILL MIDDLE POND	129	LOW
SMITHFIELD	WOONASQUATUCKET RIVER	ESMOND MILL LOWER POND	130	LOW
SMITHFIELD	HARRIS BROOK	HARRIS POND	142	LOW
SMITHFIELD	WOONASQUATUCKET RIVER-TRIB	COMSTOCK FARM POND	428	LOW
SMITHFIELD	STILLWATER RIVER-TRIB	CONNETTI FARM POND	435	LOW
SMITHFIELD	WOONASQUATUCKET RIVER-TRIB	CONNER FARM POND	451	LOW
SMITHFIELD	STILLWATER RIVER-TRIB	LOCKWOOD FARM POND	456	LOW
SMITHFIELD	STILLWATER RIVER-TRIB	ADLER'S FARM POND #1	520	LOW
SMITHFIELD	WOONASQUATUCKET RIVER-TRIB	GOULDS	628	LOW
SMITHFIELD	WOONASQUATUCKET RIVER-TRIB	WOLF HILL ROAD POND	629	LOW
SMITHFIELD	NINE FOOT BROOK	JIM EVANS ROAD POND	737	LOW
SOUTH KINGSTOWN	GLEN ROCK BROOK	GLEN ROCK LOWER POND	233	LOW
SOUTH KINGSTOWN	GLEN ROCK BROOK	GLEN ROCK MIDDLE POND	234	LOW
SOUTH KINGSTOWN	GLEN ROCK BROOK	GLEN ROCK UPPER POND	235	LOW
SOUTH KINGSTOWN	USQUEPAUG RIVER	GLEN ROCK RESERVOIR	236	SIGNIFICANT

2023 Dam Safety Annual Report  
Attachment

CITY/TOWN	RIVER/STREAM	DAM NAME	STATE ID	HAZARD
SOUTH KINGSTOWN	WHITE HORN BROOK	BISCUIT CITY POND	278	LOW
SOUTH KINGSTOWN	CHICKSHEEN BROOK	YAWGOO POND	290	LOW
SOUTH KINGSTOWN	SAUGATUCKET RIVER	WAKEFIELD POND	425	HIGH
SOUTH KINGSTOWN	SAUGATUCKET RIVER	PEACE DALE POND	426	HIGH
SOUTH KINGSTOWN	USQUEPAUG RIVER	CONGDON FARM POND	447	LOW
SOUTH KINGSTOWN	UNNAMED STREAM	KENYON FARM POND	449	LOW
SOUTH KINGSTOWN	ROCKY BROOK	WILD LIFE MARSH	521	LOW
SOUTH KINGSTOWN	ROCKY BROOK	HEFLER FARM POND	525	HIGH
SOUTH KINGSTOWN	PAWCATUCK RIVER	GREAT SWAMP GOOSE MARSH	531	LOW
SOUTH KINGSTOWN	SAUGATUCKET RIVER	INDIAN LAKE	537	LOW
SOUTH KINGSTOWN	ROCKY BROOK	ASA POND	549	HIGH
SOUTH KINGSTOWN	INDIAN RUN	INDIAN RUN	573	SIGNIFICANT
SOUTH KINGSTOWN	ROCKY BROOK	PEACEDALE RESERVOIR	578	LOW
SOUTH KINGSTOWN	ROCKY BROOK	ROCKY BROOK RESERVOIR	579	SIGNIFICANT
SOUTH KINGSTOWN	GENESEE BROOK	SHERMAN FARM	588	LOW
SOUTH KINGSTOWN	USQUEPAUG RIVER	HIDDEN OUTLET	723	LOW
SOUTH KINGSTOWN	GREEN HILL POND-TRIB	FACTORY POND	728	LOW
SOUTH KINGSTOWN	GREEN HILL POND-TRIB	PARTY SHACK POND	729	LOW
SOUTH KINGSTOWN	SAUGATUCKET RIVER	MOOREFIELD	730	LOW
SOUTH KINGSTOWN	BREAKHEART BROOK	SWAMPY	731	LOW
TIVERTON	BORDEN BROOK	NONQUIT POND	396	SIGNIFICANT
TIVERTON	ADAMSVILLE BROOK	MILL POND	467	SIGNIFICANT
TIVERTON	SAKONNET RIVER-TRIB	CREAMER	742	HIGH
TIVERTON	SUCKER BROOK	EAGLEVILLE	749	LOW
TIVERTON	SUCKER BROOK	STAFFORD	770	SIGNIFICANT
WARREN	KICKAMUIT RIVER-TRIB	MANCHESTER POND	443	LOW
WARREN	KICKAMUIT RIVER	WARREN RESERVOIR LOWER	479	LOW
WARREN	KICKAMUIT RIVER	WARREN RESERVOIR UPPER	480	SIGNIFICANT
WARREN	KICKAMUIT RIVER-TRIB	TOUISSET HIGHLAND	753	LOW
WARWICK	PAWTUXET RIVER	FRUIT OF THE LOOM	144	LOW
WARWICK	PAWTUXET RIVER	SILVER HOOK	302	LOW
WARWICK	HARDIG BROOK-TRIB	VALLEY COUNTRY CLUB POND	431	LOW
WARWICK	HARDIG BROOK-TRIB	KEITH FARM POND	450	LOW

2023 Dam Safety Annual Report  
Attachment

CITY/TOWN	RIVER/STREAM	DAM NAME	STATE ID	HAZARD
WARWICK	HARDIG BROOK-TRIB	CAMP WARWICK POND	462	HIGH
WARWICK	MASKERCHUGG RIVER	FEIRING FARM POND	544	LOW
WARWICK	PROVIDENCE RIVER-TRIB	CRANBERRY BOG	548	LOW
WARWICK	APPONAUG BROOK	GORTON POND	559	LOW
WARWICK	PAWTUXET RIVER-TRIB	THREE PONDS	664	LOW
WARWICK	PROVIDENCE RIVER-TRIB	MANOR DRIVE EXT. POND	665	LOW
WARWICK	PROVIDENCE RIVER-TRIB	SQUANTUM DRIVE	666	LOW
WARWICK	APPONAUG BROOK	GORTON POND/RT 5	667	LOW
WARWICK	HARDIG BROOK	UNNAMED	668	LOW
WARWICK	TUSCATUCKET BROOK	DAVES MARKETPLACE	669	SIGNIFICANT
WARWICK	HARDIG BROOK	ROYAL CREST APARTMENTS UPPER	670	LOW
WARWICK	HARDIG BROOK	ROYAL CREST APARTMENTS LOWER	671	LOW
WARWICK	HARDIG BROOK-TRIB	VALLEY COUNTRY CLUB #2	678	LOW
WARWICK	HARDIG BROOK	GRIST MILL APARTMENTS	764	HIGH
WARWICK / NORTH KINGSTOWN	POTOWOMUT RIVER	OLD FORGE MILL POND	296	LOW
WEST GREENWICH	CONGDON RIVER	RATHBON POND	181	LOW
WEST GREENWICH	CARR RIVER	TARBOX POND	183	LOW
WEST GREENWICH	CARR RIVER	CARR POND	184	LOW
WEST GREENWICH	NOOSENECK RIVER	YARD POND	189	LOW
WEST GREENWICH	NOOSENECK RIVER	NOOSENECK MILL	193	LOW
WEST GREENWICH	FALLS RIVER	HAZARD POND	200	LOW
WEST GREENWICH	CONEY BROOK	TILLINGHAST POND	201	LOW
WEST GREENWICH	KELLEY BROOK	HUDSON POND	203	LOW
WEST GREENWICH	PARRIS BROOK	TIPPECANSETT POND	206	LOW
WEST GREENWICH	ACID FACTORY BK	EISENHOWER LAKE	207	LOW
WEST GREENWICH	FLAT RIVER	OLD MILL POND #1	210	LOW
WEST GREENWICH	PHILLIPS BROOK	OLD MILL POND #2	211	LOW
WEST GREENWICH	ACID FACTORY BROOK	KNOX FARM POND	212	LOW
WEST GREENWICH	BREAKHEART BROOK	OLD MILL NO. 3	213	LOW
WEST GREENWICH	CARR RIVER	CAPWELL MILL POND	281	LOW
WEST GREENWICH	RACCOON BROOK	ROBIN HOLLOW POND	328	LOW
WEST GREENWICH	NOOSENECK RIVER	BRADLEY POND	369	LOW

2023 Dam Safety Annual Report  
Attachment

CITY/TOWN	RIVER/STREAM	DAM NAME	STATE ID	HAZARD
WEST GREENWICH	BREAKHEART BROOK	KASELLA FARM POND	468	LOW
WEST GREENWICH	NOOSENECK RIVER	R.I. FISH & GAME PROTECTION ASSOC.	519	LOW
WEST GREENWICH	ACID FACTORY BROOK-TRIB	LEYDEN WILDLIFE POND	597	LOW
WEST GREENWICH	FLAT RIVER	OLD MILL #1 UPPER	605	LOW
WEST GREENWICH	ACID FACTORY BROOK-TRIB	STUBBLE BROOK ROAD POND	695	LOW
WEST GREENWICH	ACID FACTORY BROOK-TRIB	LEYDEN TREE FARM UPPER	696	LOW
WEST GREENWICH	ACID FACTORY BROOK-TRIB	LEYDEN TREE FARM LOWER	697	LOW
WEST GREENWICH	UNNAMED	ST JOSEPH CEMETERY	720	LOW
WEST GREENWICH	NOOSENECK RIVER	RI FISH & GAME PROTECTIVE ASSOC #2	734	LOW
WEST GREENWICH		UNNAMED	768	LOW
WEST WARWICK	PAWTUXET RIVER	NATICK POND	145	HIGH
WEST WARWICK	PAWTUXET RIVER-SOUTH BRANCH	RIVERPOINT POND LOWER	146	LOW
WEST WARWICK	PAWTUXET RIVER-SOUTH BRANCH	RIVERPOINT POND UPPER	147	HIGH
WEST WARWICK	PAWTUXET RIVER-SOUTH BRANCH	ARCTIC	148	HIGH
WEST WARWICK	PAWTUXET RIVER	CENTERVILLE POND	149	HIGH
WEST WARWICK	PAWTUXET RIVER-SOUTH BRANCH	CROMPTON LOWER	150	LOW
WEST WARWICK	PAWTUXET RIVER-NORTH BRANCH	RIVERPOINT MILL POND DAM	155	LOW
WEST WARWICK	PAWTUXET RIVER-NORTH BRANCH	PHENIX MILL POND	156	LOW
WEST WARWICK	HAWKINSON BROOK	FLAT TOP	196	LOW
WEST WARWICK	HARDIG BROOK	BOUCHAR FARM POND	455	SIGNIFICANT
WEST WARWICK	PAWTUXET RIVER-NORTH BRANCH	LOMBARDI FARM POND	473	LOW
WEST WARWICK	MESHANTICUT BROOK	DI MARTINO FARM POND	535	LOW
WEST WARWICK	CEDAR BROOK	JUNIPER DRIVE POND	676	LOW
WESTERLY	PAWCATUCK RIVER	POTTER HILL	254	LOW
WESTERLY	PERRY HEALY BROOK	WOODY HILL RESERVOIR	454	LOW
WESTERLY	CEDAR SWAMP BROOK	OLAF FARM POND	493	LOW

2023 Dam Safety Annual Report  
Attachment

CITY/TOWN	RIVER/STREAM	DAM NAME	STATE ID	HAZARD
WESTERLY	UNNAMED	MISQUAMICUT COUNTRY CLUB POND	547	LOW
WESTERLY	MASTUXET BROOK	BOILING SPRING	752	LOW
WESTERLY / CT	PAWCATUCK RIVER	STILLMANVILLE	256	LOW
WOONSOCKET	BLACKSTONE RIVER	WOONSOCKET FALLS	056	SIGNIFICANT
WOONSOCKET	CROOKFALL BROOK	WOONSOCKET RESERVOIR # 2	069	LOW
WOONSOCKET	PETERS RIVER	JENCKESVILLE POND LOWER	071	LOW
WOONSOCKET	MILL RIVER	HARRIS POND	073	HIGH
WOONSOCKET	PETERS RIVER	JENKESVILLE POND UPPER	298	LOW
WOONSOCKET	IRONMINE BROOK	CASS PARK MIDDLE	388	LOW
WOONSOCKET	IRONMINE BROOK	SYLVESTER POND	389	LOW
WOONSOCKET	MILL RIVER	SOCIAL PARK POND LOWER	486	LOW
WOONSOCKET	IRON ROCK BROOK	HOLLEY LANE POND	621	HIGH
WOONSOCKET	IRON ROCK BROOK	PRISCILLA ROAD POND	622	LOW
WOONSOCKET	IRONMINE BROOK	CASS PARK LOWER	623	LOW
WOONSOCKET	IRONMINE BROOK	CASS PARK UPPER	624	LOW
WOONSOCKET	PACHET BROOK	SOCIAL PARK POND SECONDARY	630	LOW