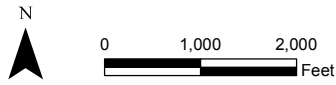


1:24,000 scale digital topographic map  
 obtained from Rhode Island Geographic  
 Information System (RIGIS) at:  
<http://www.edc.uri.edu/rigis>



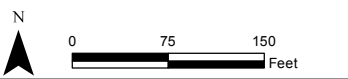
Prepared/Date: BJR 02/16/15  
 Checked/Date: DEH 02/16/15

Former Gorham Manufacturing Site  
 333 Adelaide Avenue  
 Providence, RI



Site Location Map

Document: P:\old\_wakefield\_data\projects\TEXTORNGORHAM\GIS\MapDocuments\RAWP - Phase III\SitePlan.mxd PDF: P:\BOS\Texton\365214\0032 - Texton Gorham Remediation\8.0 Proj Deliverables\8.2 Work Plans\Figure 2 - Site Plan.pdf



**Legend**

- Approximate Parcel Boundary
- Former Slag Area

Note: 2011 Ortho photo obtained from Rhode Island Geographic Information System (RIGIS)

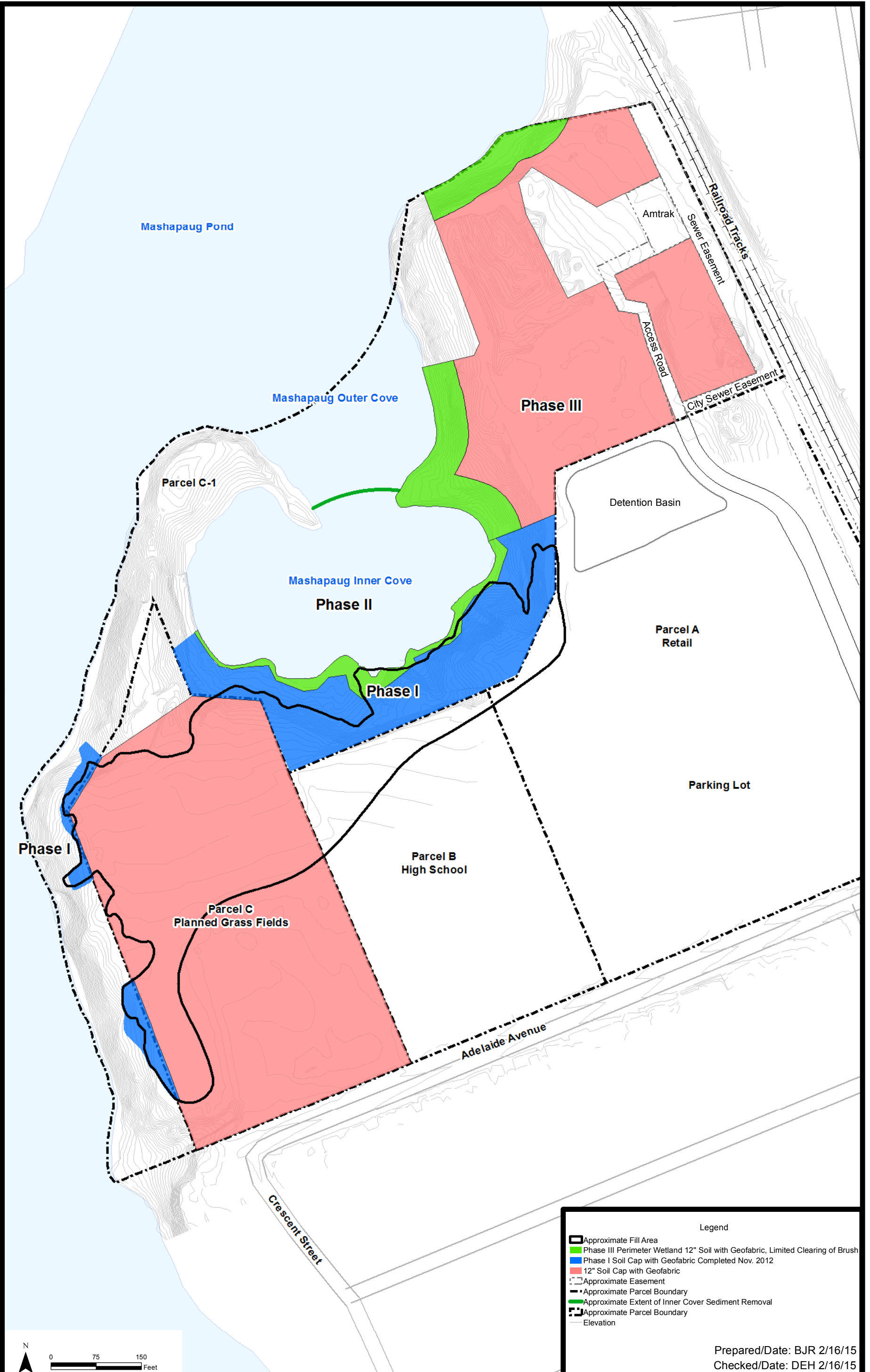
Prepared/Date: BJR 2/16/15  
Checked/Date: DEH 2/16/15

Former Gorham Manufacturing Site  
333 Adelaide Avenue  
Providence, RI



Site Plan  
Project 3652-14-0032  
Figure 2

Document: P:\old\_wakefield\_data\projects\TEXTONGORHAM\GIS\MapDocuments\RAWP - Phase III\Figure 3 - Exceeding Cleanup Criteria.mxd PDF: P:\BOST\Texton\3652\140032 - Texton Gorham Remediation\8.0 Proj Deliverables\8.2 Work Plans\Figure 3 - Parcel C and Parcel C-1 Exceeding Cleanup Criteria.pdf



**Legend**

- Approximate Fill Area
- Phase III Perimeter Wetland 12" Soil with Geofabric, Limited Clearing of Brush
- Phase I Soil Cap with Geofabric Completed Nov. 2012
- 12" Soil Cap with Geofabric
- Approximate Easement
- Approximate Parcel Boundary
- Approximate Extent of Inner Cover Sediment Removal
- Approximate Parcel Boundary
- Elevation

Prepared/Date: BJR 2/16/15  
Checked/Date: DEH 2/16/15

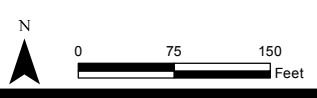
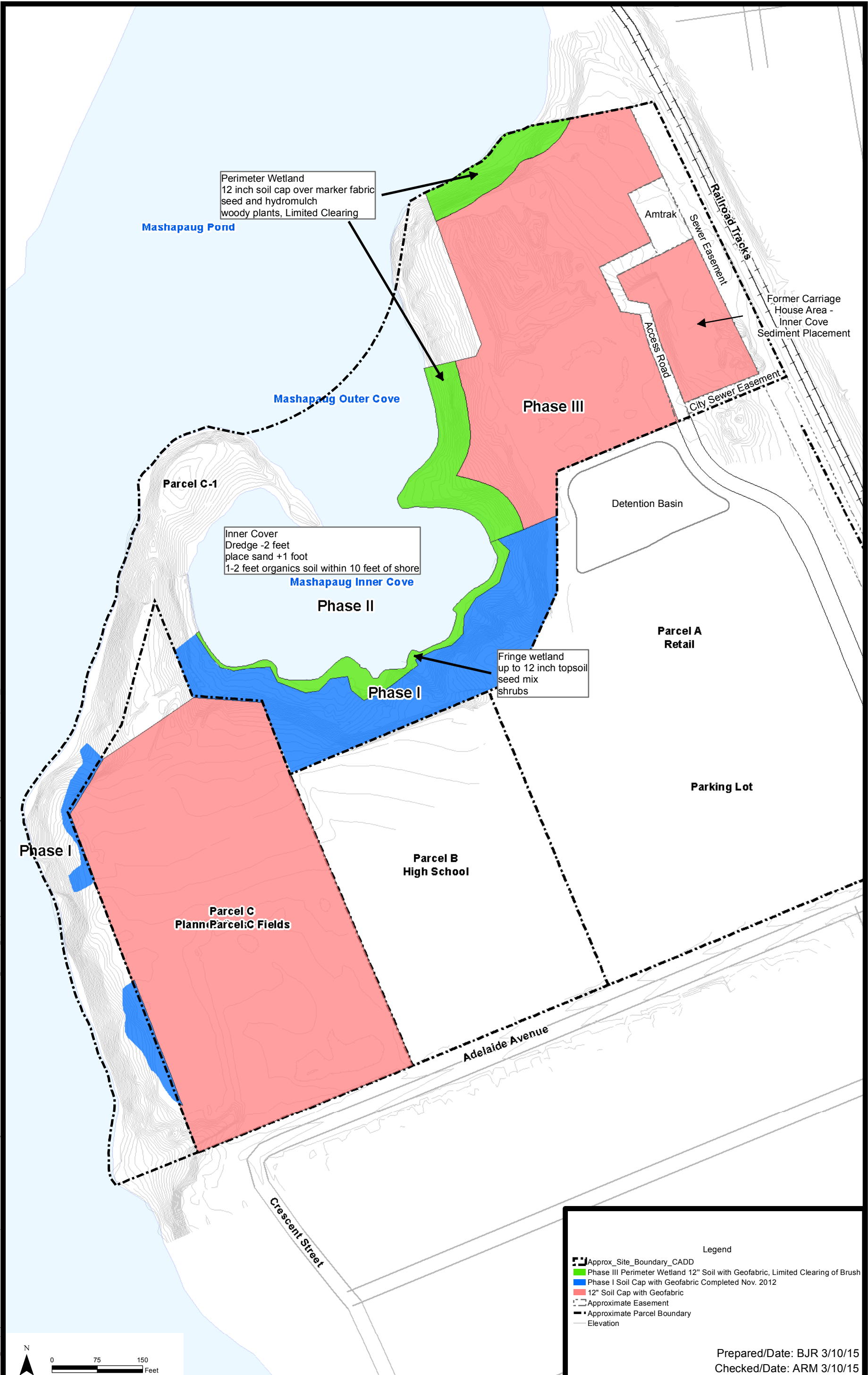
Former Gorham Manufacturing Site  
333 Adelaide Avenue  
Providence, RI



Parcel C-1 and Parcel C  
Exceeding Cleanup Criteria  
Project 3652-14-0032

Figure 3

Document: P:\old\_wakefield\_Data\projects\TEXT\GORHAM\GIS\MapDocuments\RAWP - Phase II\Figure 4 - Parcel C Planned Remediation.mxd PDF: P:\old\_wakefield\_Data\projects\TEXT\GORHAM\GIS\MapDocuments\RAWP - Phase II\Figure 4 - Parcel C Planned Remediation.pdf



**Legend**

- Approx\_Site\_Boundary\_CADD
- Phase III Perimeter Wetland 12" Soil with Geofabric, Limited Clearing of Brush
- Phase I Soil Cap with Geofabric Completed Nov. 2012
- 12" Soil Cap with Geofabric
- Approximate Easement
- Approximate Parcel Boundary
- Elevation

Prepared/Date: BJR 3/10/15  
Checked/Date: ARM 3/10/15

Former Gorham Manufacturing Site  
333 Adelaide Avenue  
Providence, RI



Parcel C Planned Remediation  
Project 3652-14-0032  
Figure 4



Former Gorham Manufacturing Site  
333 Adelaide Avenue Site  
Providence, Rhode Island

amec foster wheeler

2011 Bathymetric Contours  
Mashapaug Pond  
Project 3652-14-0032

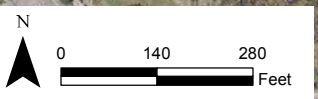
Figure 5



**Legend**

- ▲ URI Sediment Sample Location 1986
- ▼ URI Surface Water Sample Location 1986
- ▼ GZA Surface Water Sample Location 1986
- ▲ RIDEM Sediment Sample Location 1987
- ▼ RIDEM Surface Water Sample Location 1987
- ▲ RIDEM Sediment Sample Location 2005
- ▼ USEPA Water Column Station Surface Water Sampling 2001
- ▼ Surface Water Sample SW-1 through SW-4 were collected on April 15, 1999 by Harding Lawson Associates.
- ▲ Sediment Samples Cove-1 through Cove-3 were collected by R. Dorr on September 5, 2005
- Approximate Site Boundary

Prepared/Date: BJR 02/16/15  
 Checked/Date: DEH 02/16/15



Former Gorham Manufacturing Site  
 333 Adelaide Avenue Site  
 Providence, Rhode Island



Historic Surface Water  
 and Sediment Sample Locations  
 Project 3652-14-0032 Figure 6



Prepared/Date: BJR 02/16/15  
 Checked/Date: DEH 02/16/15

Former Gorham Manufacturing Site  
 333 Adelaide Avenue Site  
 Providence, Rhode Island



Surface Water and Sediment Sample  
 Locations 2005-2012  
 Project 3652-14-0032

Figure 7

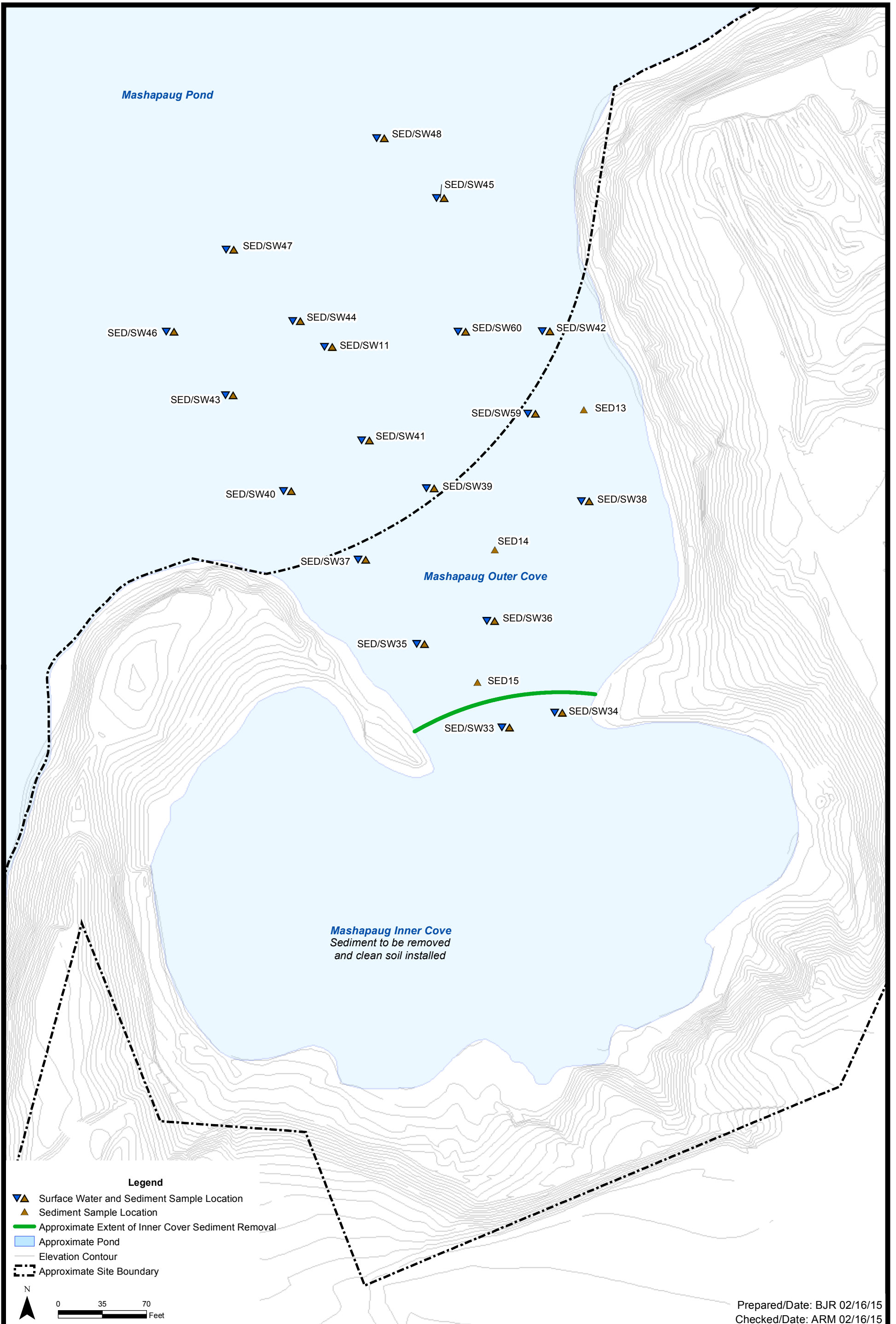


Former Gorham Manufacturing Site  
 333 Adelaide Avenue Site  
 Providence, Rhode Island



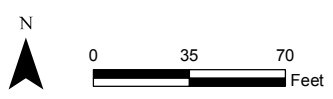
Phase II Pre-Design Sample Locations  
 Project 3652-14-0032  
 Figure 8





**Legend**

- ▼▲ Surface Water and Sediment Sample Location
- ▲ Sediment Sample Location
- Approximate Extent of Inner Cover Sediment Removal
- Approximate Pond
- Elevation Contour
- ⋯ Approximate Site Boundary



Prepared/Date: BJR 02/16/15  
 Checked/Date: ARM 02/16/15

Former Gorham Manufacturing Site  
 333 Adelaide Avenue Site  
 Providence, Rhode Island



Sample Locations Used for the Outer  
 Cove Ecological Risk Assessment  
 3652-14-0032

Figure 9

