



August 25, 2006

081-12152-03

Mr. Jeffrey Crawford
Rhode Island Department of Environmental Management
Office of Waste Management
235 Promenade Street
Providence, RI 02908-5767

RECEIVED
D.E.M. / O.W.M.
2006 AUG 28 P 12:35

Subject: Springfield Street School Complex, 50 Springfield Street, Providence, RI

Dear Mr. Crawford:

We are providing this letter regarding the status of school grounds repair work at the above referenced Site. Repairs made to date included the following:

- Placing asphalt patch material around the storm drain in the courtyard of the middle school.
- Regrading and reseeding depressions around the transformer at the middle school.
- Placing asphalt patch material along the ramp on the west side of the middle school behind the gym.
- Reseeding grassy areas as needed.

Photographs of these areas are attached.

In addition, Alan Sepe of the City of Providence and Stephen Tremblay of the Providence School Department conducted a meeting and tour of the site on June 13, 2006 with the design build team who constructed the Site buildings, including the architect, structural engineer, contractor, and civil engineer. This group was asked to develop a plan for corrective actions for areas where the affects of settling have been observed, such as the area of the storm drain in the middle school courtyard. These recommendations have not been received yet.

Please call me if you have any questions or need any additional information.

Sincerely,

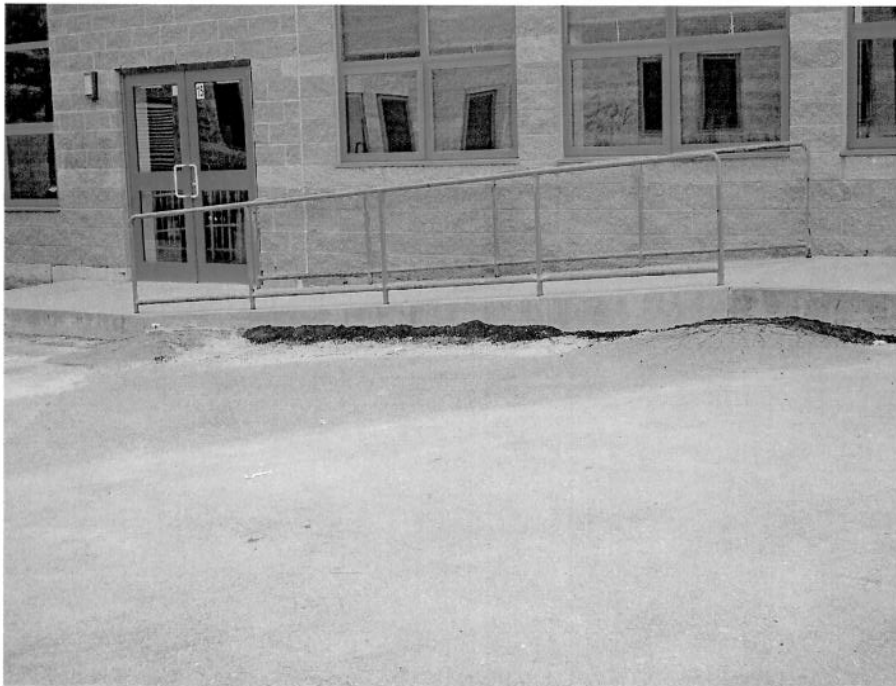
Donna H. Pallister, P.E.
Senior Engineer

CC: S. Tremblay, Providence School Department
A. Sepe, City of Providence



1

Storm Drain in Middle School Courtyard, June 16, 2006



2

Ramp adjacent to cafeteria at Middle School, June 16, 2006



3

Reseeded grass area in courtyard at Middle School, June 16, 2006



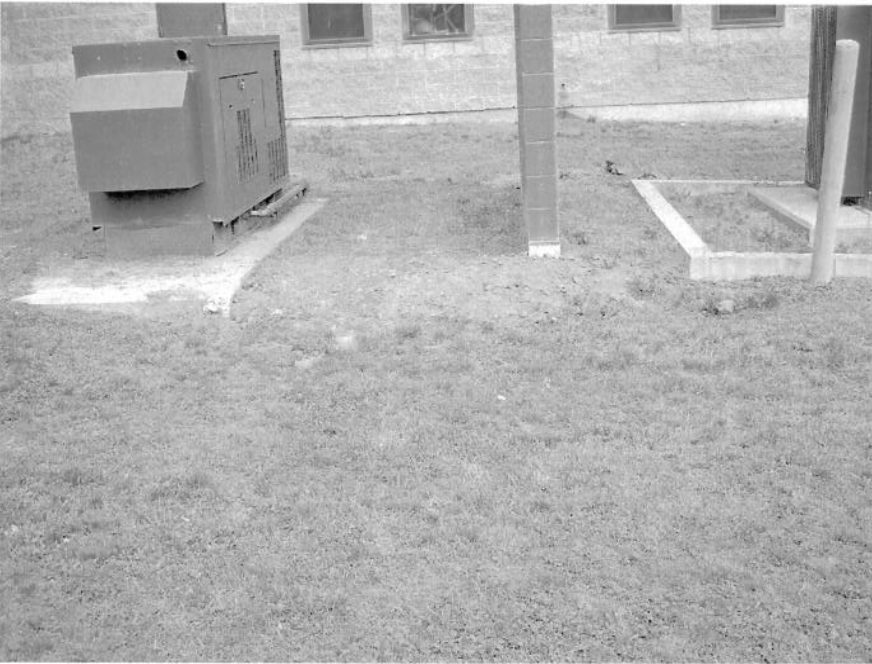
4

Reseeded grass area in courtyard at Middle School, August 25, 2006



5

Ramp behind middle school with asphalt patch along building, June 16, 2006



6

New fill in transformer area, June 16, 2006



7

Fill around storm drain near transformer, June 16, 2006.



8

Grass around storm drain in transformer area, August 25, 2006.