



Proactive by Design

GEOTECHNICAL  
ENVIRONMENTAL  
ECOLOGICAL  
WATER  
CONSTRUCTION  
MANAGEMENT



## MEMORANDUM

To: Joseph Martella, RIDEM

From: Dave Rusczyk, GZA

Cc: Kenneth Lento, Rhode Island Energy

Date: June 7, 2022

Re: Site Response Action Report  
Period May 15, 2022 through May 28, 2022  
Former Tidewater Facility  
Pawtucket, Rhode Island  
RIDEM Case No. 95-022 / Site Remediation File No. SR-26-0934

---

### SITE ACTIVITIES PERFORMED

- Charter Contracting Company, LLC (Charter) continued activities related to implementation of the remedial construction work. These activities included:
  - Continued regrading of the ground surface south of the proposed stadium in preparation for installation of the engineered cap.
  - Completion of the final grading of the subgrade within the field area of the proposed stadium in preparation for the deployment of the impermeable liner.
  - Continued deployment of the impermeable liner across the field portion of the stadium.
  - Continued installation of the engineered cap in the northwestern portion of the Site.
- Perimeter air monitoring was performed during the period covered by this report with 9 air monitoring stations (4 solar powered units located proximate to the river and 5 electrically powered units). The stations measured and recorded respirable dust and total volatile organic compounds (TVOC) concentrations continuously 24 hours per day/7 days per week. As indicated in the attached weekly perimeter air monitoring graphs, no exceedances of the total volatile organic compound (0.5 ppmv) and respirable dust ( $150 \mu\text{g}/\text{m}^3$ ) perimeter threshold levels were observed during the monitoring period covered by this report with the exception of the following:
  - Elevated respirable dust concentrations were observed at Station 2 on May 26, 2022. The contractor was notified of these elevated respirable dust concentrations and water was applied to the surface of the work area. Respirable dust concentrations decreased after application of the water.
  - Elevated respirable dust concentrations were observed at Station 6 on Saturday, May 21 and Sunday, May 22, 2022. No work was being performed at this time and the elevated respirable dust concentrations were attributed to the humid weather conditions over the weekend.
- GZA collected ambient air samples from upwind and downwind locations on May 19 and 26, 2022 for laboratory analysis for benzene, toluene, ethylbenzene, xylenes, and naphthalene. The analytical results from these samples indicated there were no exceedances of the project action levels. The analytical results were posted to the project website and the bulletin boards at the ends of Tidewater Street and Bowles Court and are also attached to this report.



ANTICIPATED SITE ACTIVITIES TO BE PERFORMED WITHIN NEXT 2 WEEKS

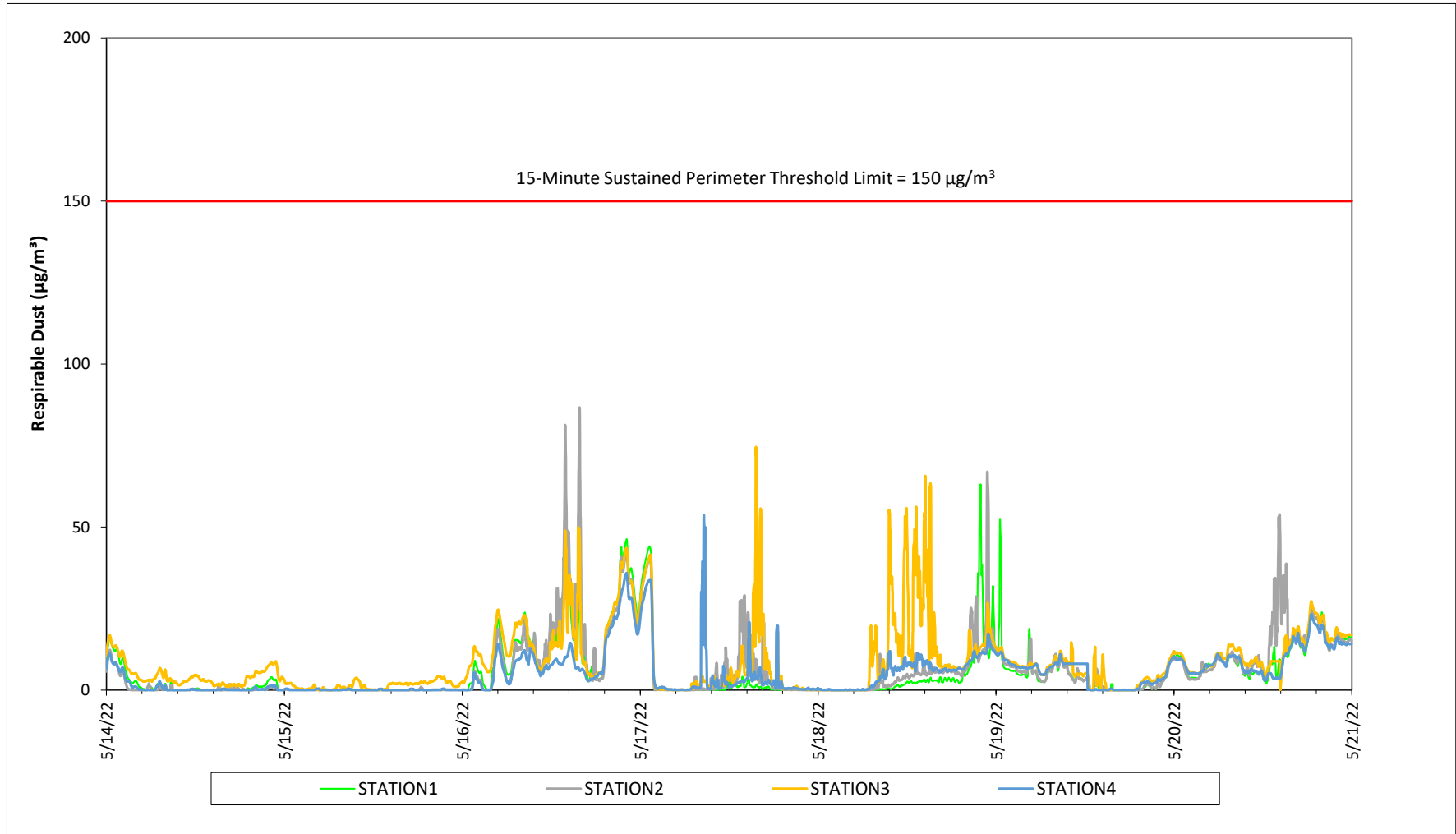
- Continued regrading south of the proposed stadium to the subgrade elevations for the engineered cap.
- Continued deployment of the impermeable liner beneath the proposed stadium footprint.
- Continued installation of the engineered cap in the northwestern portion of the Site.
- Initial placement of the topsoil engineered cap between the east side of the porous pavement maintenance path and the top of the revetment cap.
- Initial installation of the engineered cap and underdrain system within the footprint of the stadium area.

Please contact Kenneth Lento at 781-907-3655 if you have any questions or comments.

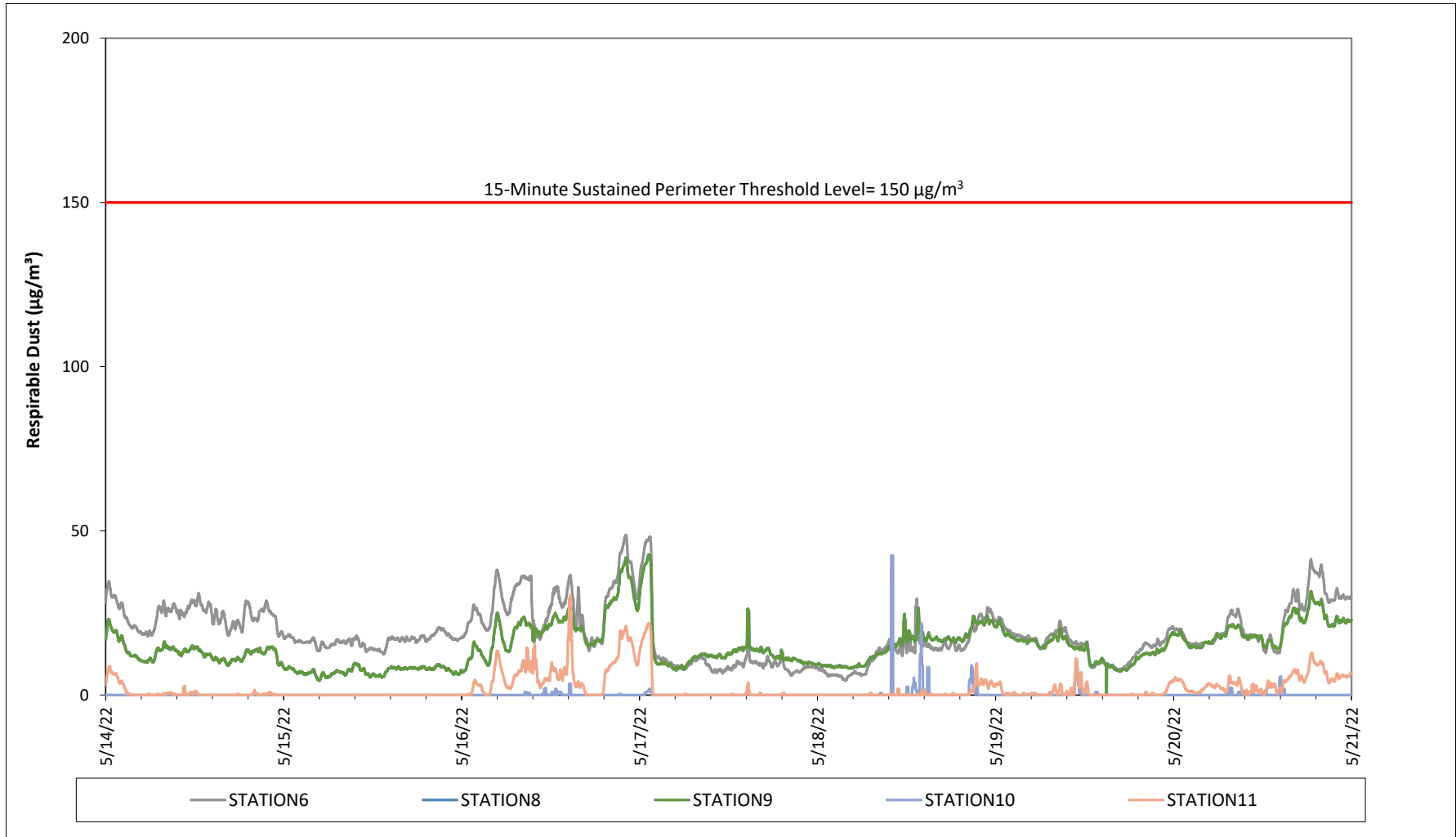
**Attachments:**

Weekly Perimeter Air Monitoring Results  
Air Monitoring Station Locations  
Weekly Ambient Air Sampling Results

Prepared by Rhode Island Energy for the Businesses and Residents Located Near the Former  
Tidewater Facility  
Air Quality Monitoring - Respirable Dust



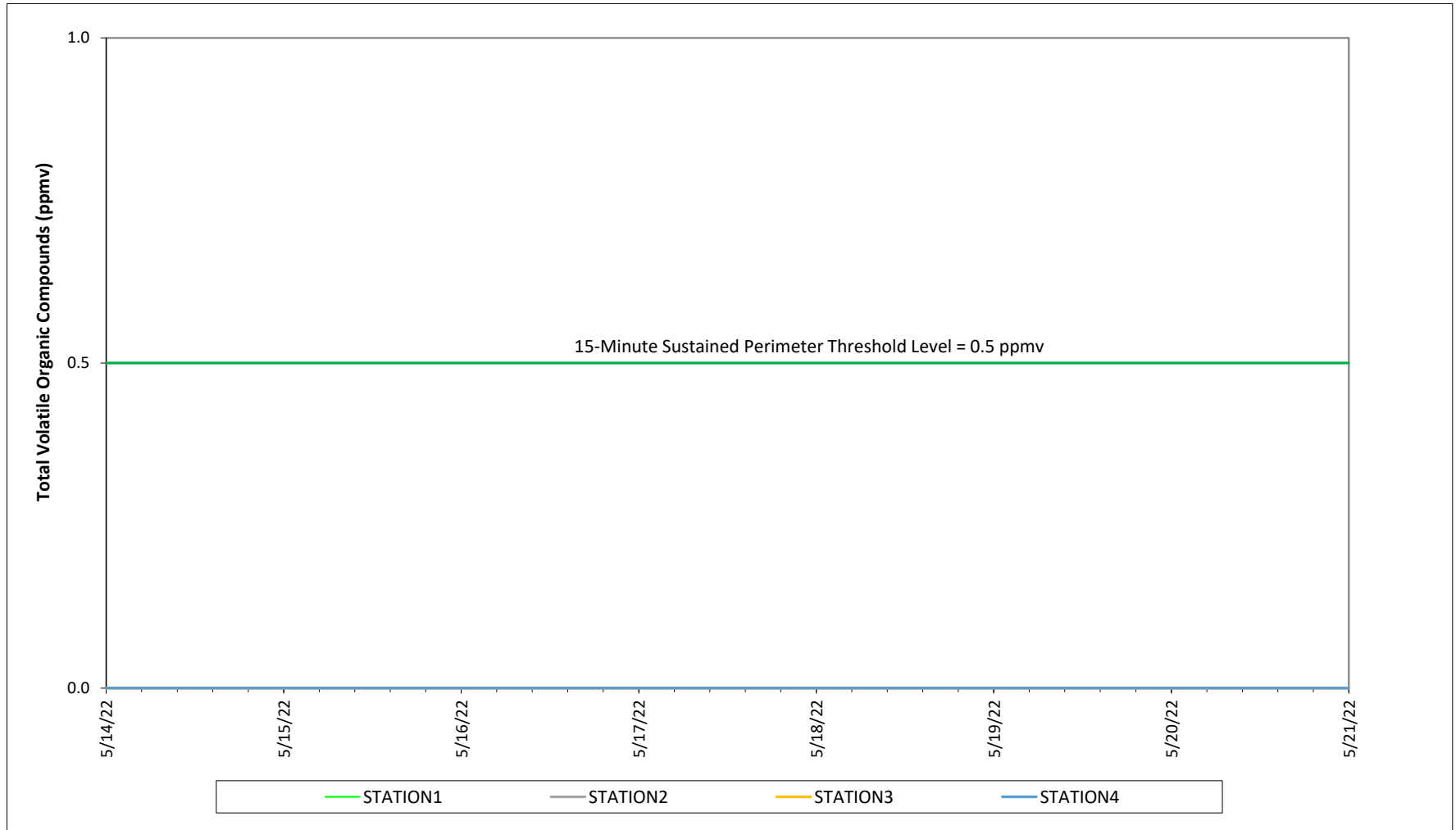
Prepared by Rhode Island Energy for the Businesses and Residents Located Near the Former  
Tidewater Facility  
Air Quality Monitoring - Respirable Dust





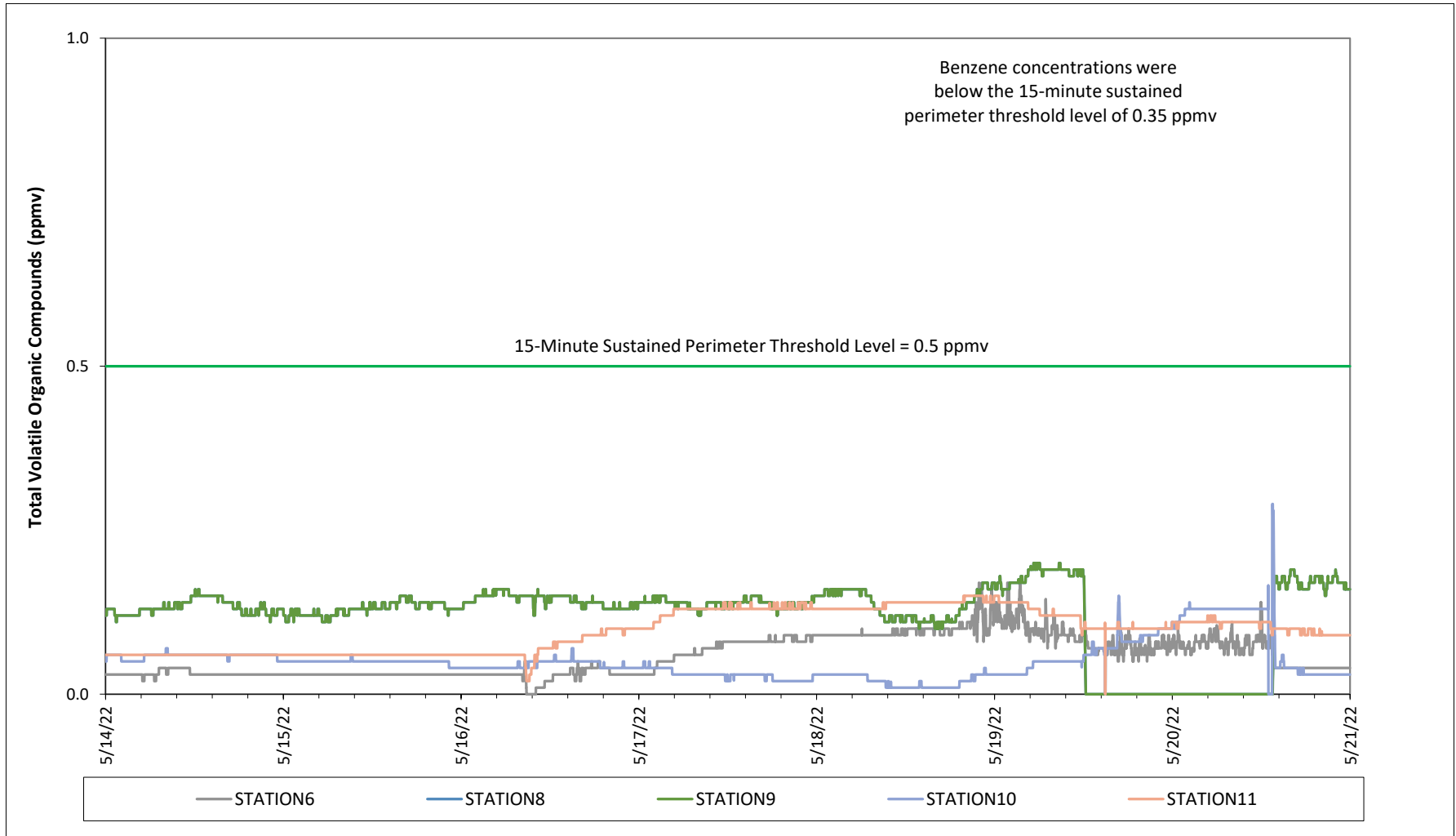
Prepared by Rhode Island Energy for the Businesses and Residents Located Near the Former  
Tidewater Facility

Air Quality Monitoring - Total Volatile Organic Compounds

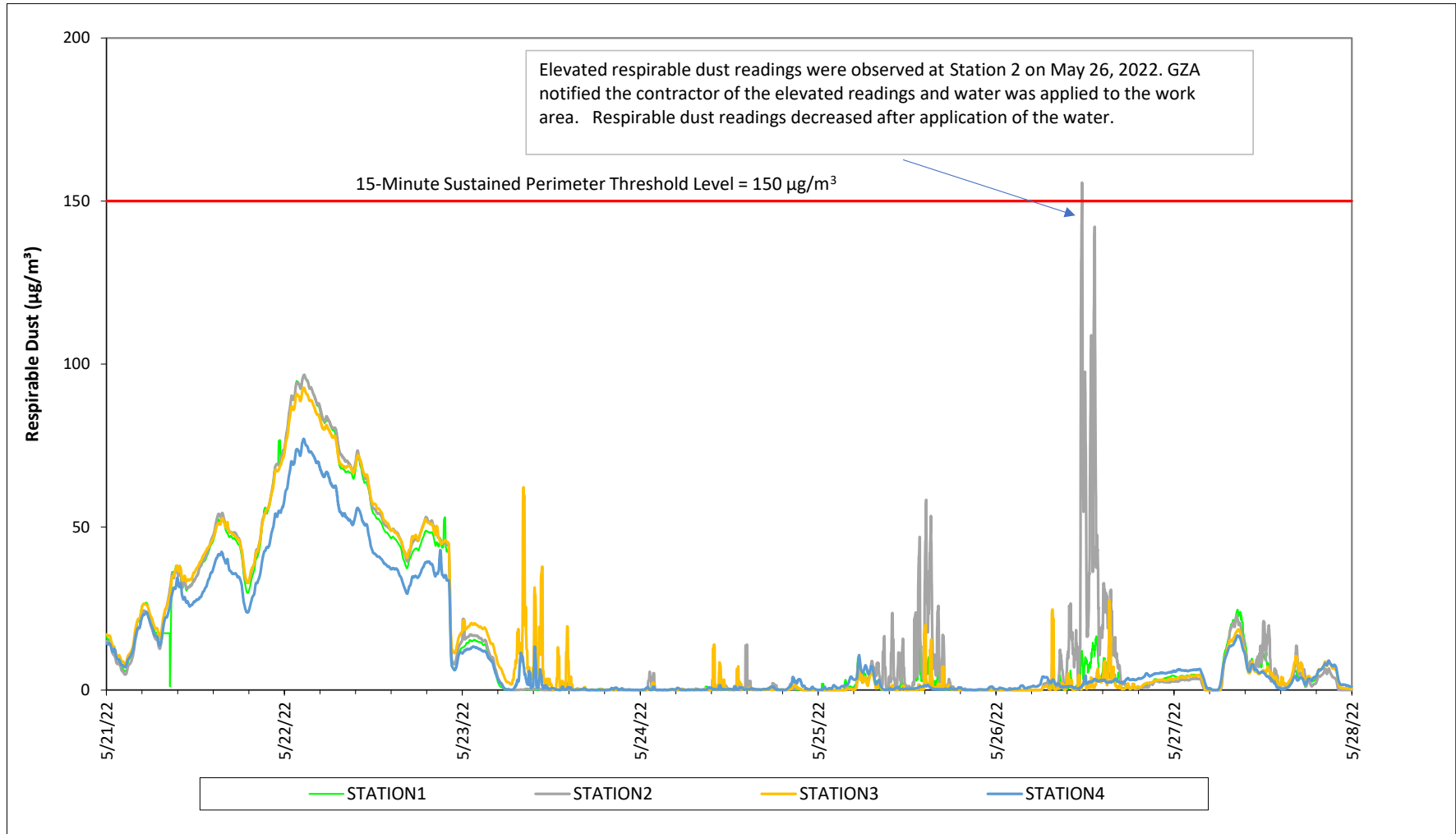


Prepared by Rhode Island Energy for the Businesses and Residents Located Near the Former  
Tidewater Facility

**Air Quality Monitoring - Total Volatile Organic Compounds**

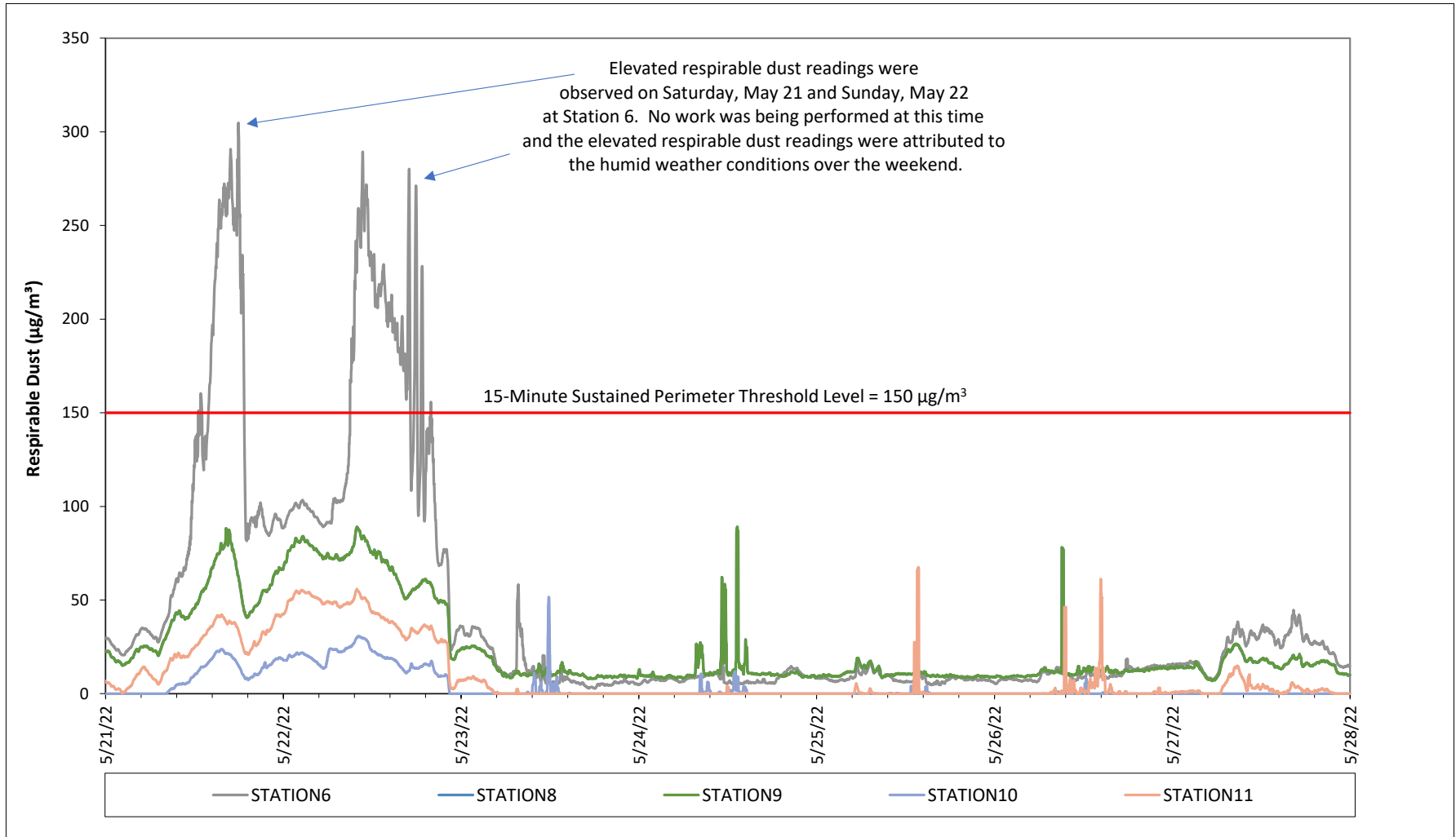


Prepared by Rhode Island Energy for the Businesses and Residents Located Near the Former  
Tidewater Facility  
Air Quality Monitoring - Respirable Dust



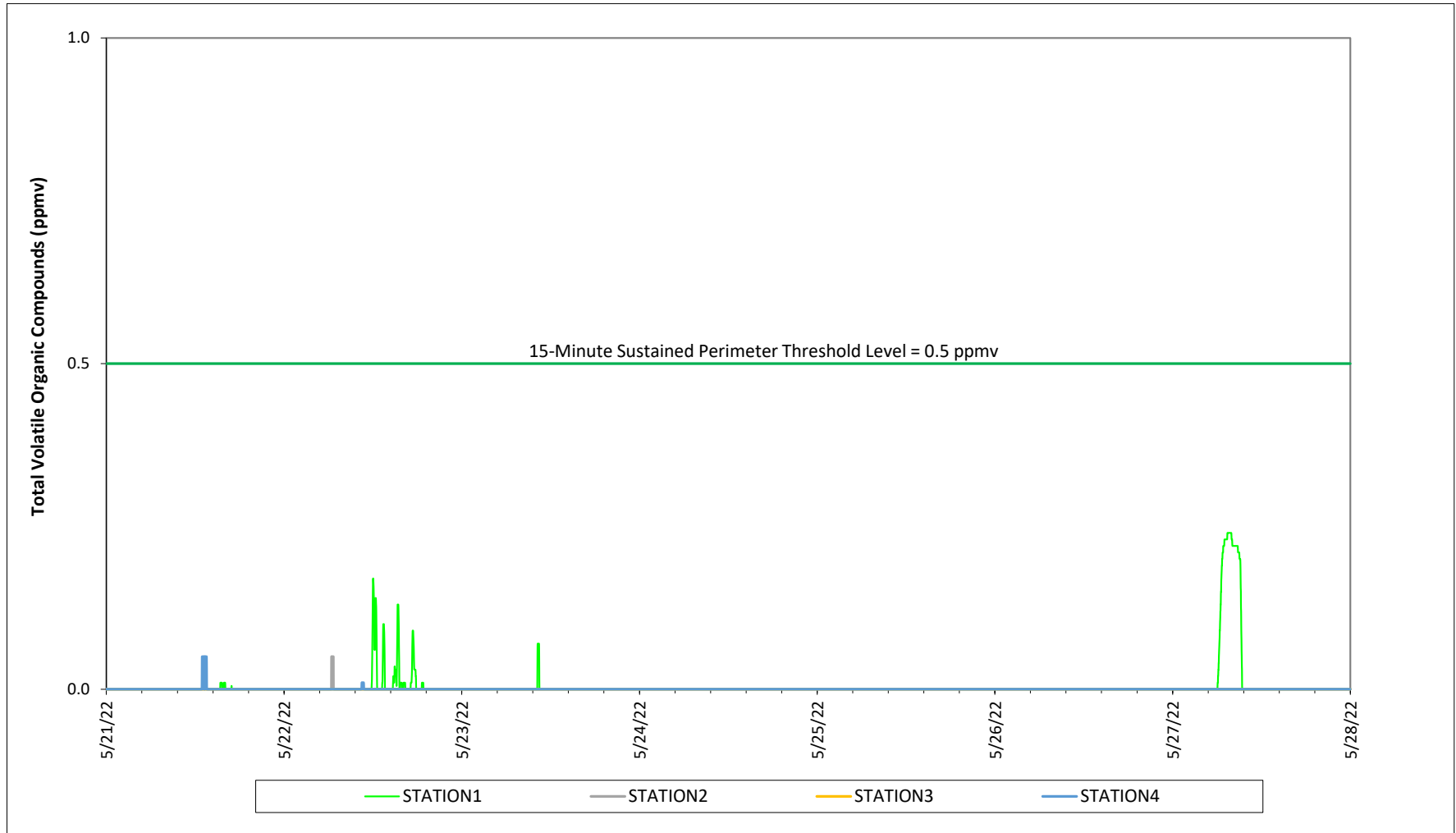
Prepared by Rhode Island Energy for the Businesses and Residents Located Near the Former  
Tidewater Facility

Air Quality Monitoring - Respirable Dust



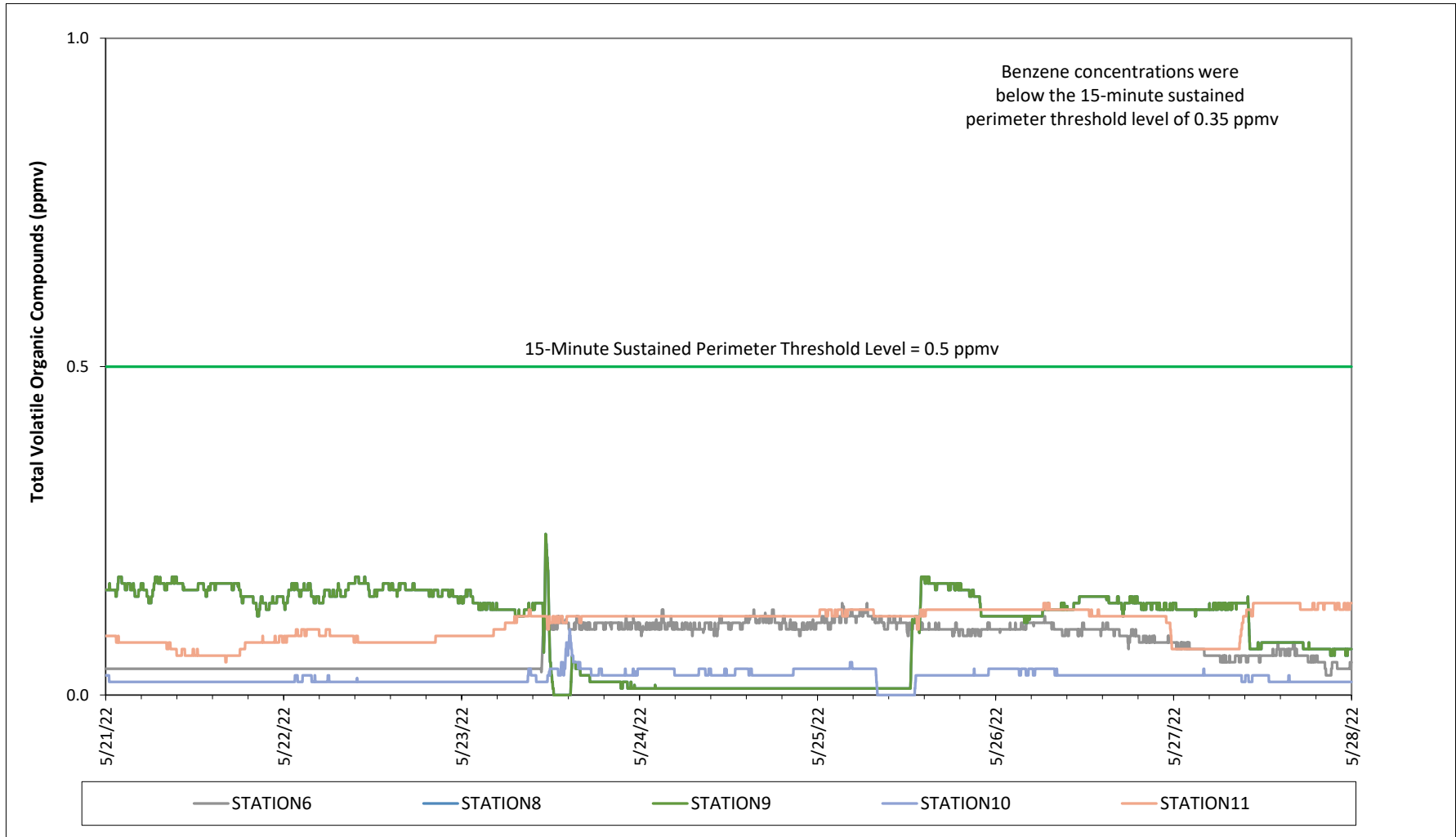
Prepared by Rhode Island Energy for the Businesses and Residents Located Near the Former  
Tidewater Facility

Air Quality Monitoring - Total Volatile Organic Compounds



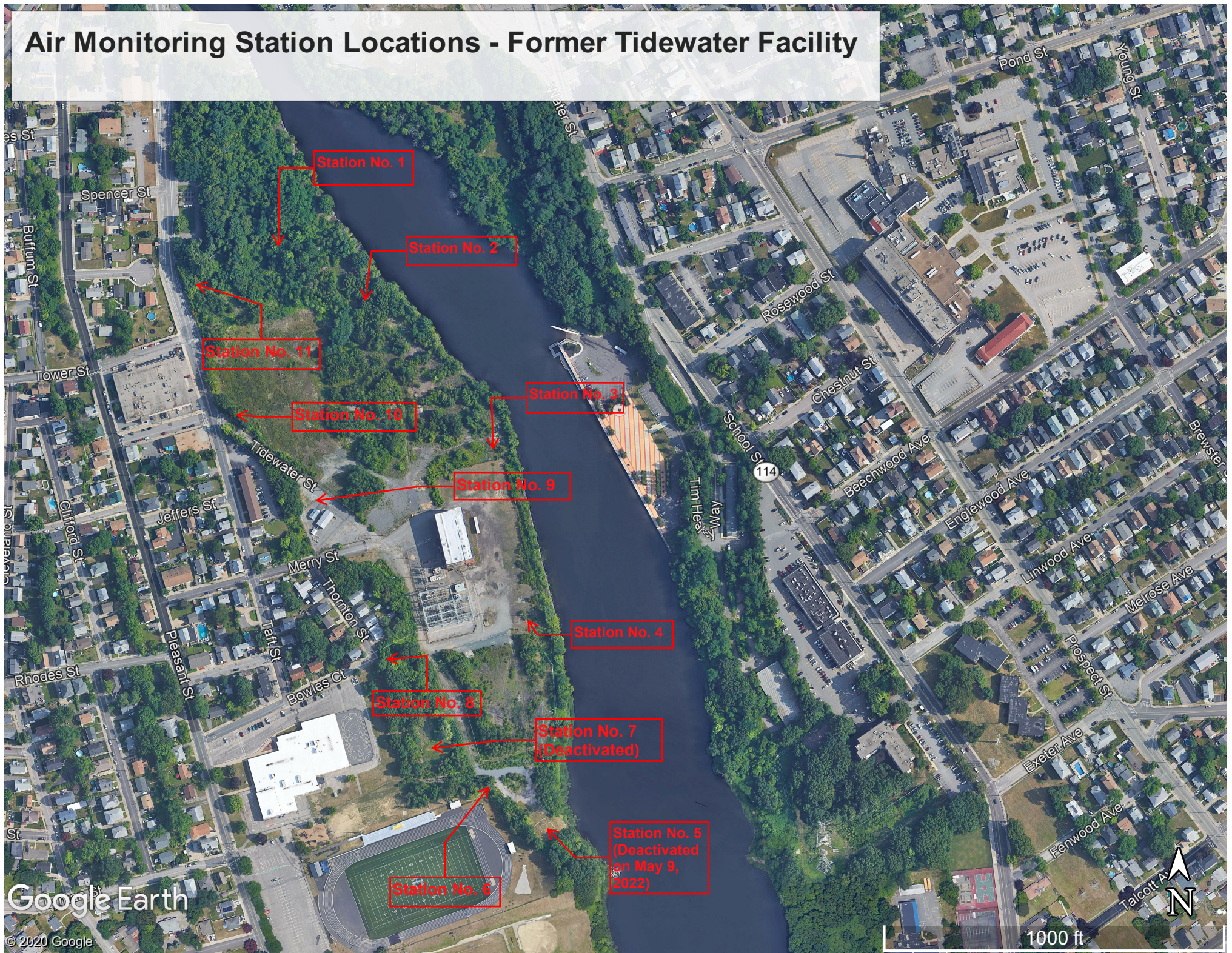
Prepared by Rhode Island Energy for the Businesses and Residents Located Near the Former  
Tidewater Facility

Air Quality Monitoring - Total Volatile Organic Compounds





# Air Monitoring Station Locations - Former Tidewater Facility





**Prepared by Rhode Island Energy for the Businesses and Residents Located Near the Former Tidewater Facility  
Weekly Ambient Air Sampling Results**

Sample Date	Compounds				
	Benzene	Toluene	Ethylbenzene	Total Xylenes	Naphthalene
	(ppb v/v)				
12-3-20 UP STREAM	0.13	0.22	0.079	0.054	< 0.5
12-3-20 DOWN STREAM	0.13	0.2	0.073	0.05	< 0.5
12-10-20 UP STREAM	0.25	0.23	< 0.2	0.14	< 0.5
12-10-20 DOWN STREAM	0.17	0.2	< 0.2	< 0.7	< 0.5
12-16-20 UP STREAM	0.19	0.2	0.083	0.12	< 0.5
12-16-20 DOWN STREAM	0.13	0.16	0.078	0.094	< 0.5
12-23-20 UP STREAM	0.15	0.16	< 0.2	0.1	< 0.5
12-23-20 DOWN STREAM	0.13	0.11	< 0.2	< 0.7	< 0.5
12-30-20 UP STREAM	0.21	0.22	< 0.2	< 0.7	< 0.5
12-30-20 DOWN STREAM	0.089	< 0.2	< 0.2	< 0.7	< 0.5
1/7/21 UP STREAM	0.29	1.5	0.22	2.1	< 0.5
1/7/21 DOWN STREAM	0.16	0.27	0.086	0.42	< 0.5
1/14/21 UP STREAM	0.43	0.44	< 0.2	0.23	< 0.5
1/14/21 DOWN STREAM	0.4	0.52	0.076	0.3	< 0.5
1-21-21 UPSTREAM	0.15	0.28	0.1	< 0.7	0.24
1-21-21 DOWNSTREAM	0.18	0.23	0.11	0.1	< 0.5
1-28-21 UPSTREAM	0.21	0.19	< 0.2	< 0.7	< 0.5
1-28-21 DOWNSTREAM	0.21	0.17	< 0.2	< 0.7	< 0.5
2-4-21 UPSTREAM	0.2	1.1	0.23	1.4	0.18
2-4-21 DOWNSTREAM	0.23	0.29	0.26	0.29	< 1.1
2-11-21 UPSTREAM	0.19	0.12	< 0.2	< 0.7	< 0.5
2-11-21 DOWNSTREAM	0.17	< 0.2	< 0.2	< 0.7	< 0.5
2-18-21 UPSTREAM	0.46	2.8	0.11	0.25	< 0.5
2-18-21 DOWNSTREAM	0.31	0.42	0.13	0.45	< 0.5
2-25-21 UPSTREAM	< 0.2	0.16	< 0.2	0.16	< 0.5
2-25-21 DOWNSTREAM	0.13	< 0.2	0.081	0.3	< 0.5
3-4-21 UPSTREAM	0.2	0.21	< 0.2	0.18	0.27
3-4-21 DOWNSTREAM	0.15	0.12	< 0.2	0.16	< 0.5
3-11-21 UPSTREAM	0.18	0.17	< 0.2	0.23	0.3
3-11-21 DOWNSTREAM	0.18	0.22	0.23	1.0	< 0.5
3-18-21 DOWNSTREAM	0.44	1.6	0.19	0.67	< 0.5
3-25-21 UPSTREAM	0.17	0.32	0.85	4.1	0.53
3-25-21 DOWNSTREAM	0.33	0.67	0.16	0.57	0.27
4-1-21 UPSTREAM	0.22	0.17	< 0.2	< 0.7	< 0.5
4-1-21 DOWNSTREAM	0.12	0.11	< 0.2	< 0.7	< 0.5
4-8-21 UPSTREAM	0.096	0.12	1.5	8.0	< 0.5
4-8-21 DOWNSTREAM	0.086	0.14	0.086	0.38	0.19
4-15-21 UPSTREAM	0.85	0.57	0.1	0.44	< 0.5
4-15-21 DOWNSTREAM	0.11	0.11	0.26	1.20	< 0.5
4-22-21 UPSTREAM	0.11	< 0.2	< 0.2	< 0.7	< 0.5
4-22-21 DOWNSTREAM	0.11	0.16	< 0.2	< 0.7	< 0.5
4-29-21 UPSTREAM	0.14	0.34	0.11	0.32	0.26
4-29-21 DOWNSTREAM	0.19	0.39	0.11	0.37	0.27
5-6-21 UPSTREAM	0.086	0.15	< 0.2	< 0.7	0.38
5-6-21 DOWNSTREAM	1.0	8.4	0.21	0.69	< 0.5
5-13-21 UPSTREAM	< 0.2	0.36	< 0.2	0.19	0.34
5-13-21 DOWNSTREAM	0.12	< 0.2	< 0.2	< 0.7	< 0.5
5-20-2021 UPSTREAM	0.38	2.5	< 0.2	< 0.7	< 0.5
5-20-2021 DOWNSTREAM	0.16	0.56	0.3	1.40	< 0.5
<b>Project Action Levels</b>	<b>6.2</b>	<b>80</b>	<b>230</b>	<b>23</b>	<b>20</b>



**Prepared by Rhode Island Energy for the Businesses and Residents Located Near the Former Tidewater Facility  
Weekly Ambient Air Sampling Results**

Sample Date	Compounds				
	Benzene	Toluene	Ethylbenzene	Total Xylenes	Naphthalene
	(ppb v/v)				
5-27-21 UPSTREAM	0.095	0.12	0.45	2.10	0.4
5-27-21 DOWNSTREAM	0.075	0.094	< 0.2	< 0.7	< 0.5
6-3-21 UPSTREAM	< 0.2	0.16	< 0.2	< 0.7	< 0.5
6-3-21 DOWNSTREAM	0.075	0.11	< 0.2	< 0.7	< 0.5
6-10-21 UPSTREAM	< 0.2	< 0.2	< 0.2	< 0.7	< 0.5
6-10-21 DOWNSTREAM	< 0.2	< 0.2	< 0.2	< 0.7	< 0.5
6-17-21 UPSTREAM	0.64	0.6	0.48	0.66	0.64
6-17-21 DOWNSTREAM	0.12	0.12	0.16	< 0.7	< 0.5
6-24-21 UPSTREAM	< 0.2	0.17	< 0.2	< 0.7	< 0.5
6-24-21 DOWNSTREAM	< 0.2	0.45	0.19	0.82	< 0.5
7-1-21 UPSTREAM	1.10	7.9	0.12	0.39	< 0.7
7-1-21 DOWNSTREAM	0.13	0.74	< 0.2	0.29	< 0.7
7-8-21 UPSTREAM	< 0.2	0.29	< 0.2	0.38	0.29
7-8-21 DOWNSTREAM	< 0.2	< 0.2	< 0.2	< 0.7	< 0.5
7-15-21 UPSTREAM	0.10	0.28	< 0.2	0.32	< 0.5
7-15-21 DOWNSTREAM	0.14	0.37	0.31	1.5	< 0.5
7-22-21 UPSTREAM	0.27	0.3	< 0.2	< 0.7	< 0.5
7-22-21 DOWNSTREAM	0.30	0.33	< 0.2	< 0.7	< 0.5
7-29-21 UPSTREAM	0.22	0.26	0.1	0.56	0.19
7-29-21 DOWNSTREAM	0.099	0.23	< 0.2	< 0.7	< 0.5
8-5-21 UPSTREAM	0.70	1.2	< 0.2	0.17	< 0.5
8-5-21 DOWNSTREAM	0.310	0.53	< 0.25	< 0.88	< 0.63
8-12-21 UPSTREAM	0.19	0.18	< 0.2	< 0.7	0.2
8-12-21 DOWNSTREAM	1.2	0.7	< 0.2	0.31	< 0.5
8-19-21 UPSTREAM	0.66	6.2	1.2	3.50	< 1.6
8-19-21 DOWNSTREAM	0.21	0.24	< 0.2	0.11	< 0.5
8-26-21 UPSTREAM	0.34	0.73	0.22	0.90	0.18
8-26-21 DOWNSTREAM	0.34	0.63	0.24	0.87	0.31
9-1-21 UPSTREAM	0.17	0.34	< 0.2	< 0.7	< 0.5
9-1-21 DOWNSTREAM	0.18	0.35	< 0.2	0.19	< 0.5
9-9-21 UPSTREAM	0.12	0.22	< 0.2	0.28	< 0.5
9-9-21 DOWNSTREAM	< 0.2	0.89	< 0.2	< 0.7	0.42
9-16-21 UPSTREAM	0.14	0.26	0.11	0.31	0.3
9-16-21 DOWNSTREAM	0.11	0.26	< 0.2	0.28	< 0.5
9-23-21 UPSTREAM	< 0.2	0.12	< 0.2	< 0.7	< 0.5
9-23-21 DOWNSTREAM	< 0.2	0.12	< 0.2	< 0.7	< 0.5
9-30-21 UPSTREAM	0.17	0.37	0.23	0.66	< 0.51
9-30-21 DOWNSTREAM	0.086	0.21	< 0.2	< 0.7	< 0.5
10-7-21 UPSTREAM	0.24	0.55	0.14	0.41	< 0.5
10-7-21 DOWNSTREAM	< 0.2	0.42	0.11	0.16	< 0.5
10-14-21 UPSTREAM	0.19	0.40	< 0.2	< 0.7	< 0.5
10-14-21 DOWNSTREAM	0.34	0.89	0.23	0.75	< 0.5
10-22-21 UPWIND	0.14	0.32	< 0.2	< 0.7	< 0.5
10-22-21 DOWNWIND	0.13	0.39	< 0.2	0.43	< 0.5
10-28-21 UPWIND	0.41	0.14	0.46	0.10	< 0.5
10-28-21 DOWNWIND	0.18	0.43	< 0.2	< 0.70	< 0.5
11-4-2021 UPWIND	0.20	0.31	< 0.2	< 0.70	< 0.5
11-4-2021 DOWNWIND	0.14	0.23	< 0.2	< 0.7	< 0.5
11-11-21 UPWIND	0.23	0.45	0.17	0.51	0.35
11-11-21 DOWNWIND	0.31	0.69	0.18	0.56	< 0.5
11-18-21 DOWNWIND	0.14	0.29	< 0.2	< 0.7	< 0.5
11-18-2021 UPWIND	0.29	0.54	0.32	0.26	2.4
11-23-21 DOWNWIND	0.13	0.24	< 0.2	0.33	< 0.5
11-23-21 UPWIND	0.27	1.0	< 0.2	0.30	0.23
12-02-21 DOWNWIND	0.28	0.82	0.22	1.0	0.95
12-02-21 UPWIND	0.36	0.67	< 0.2	0.42	< 0.5
12-9-21 DOWNWIND	0.17	0.27	< 0.2	< 0.7	< 0.5
12-9-21 UPWIND	0.18	0.39	0.13	0.43	< 0.5
<b>Project Action Levels</b>	<b>6.2</b>	<b>80</b>	<b>230</b>	<b>23</b>	<b>20</b>

**Notes:**

1. The Project Action Levels are consistent with the Air Quality Monitoring Plan developed for the Site.
2. Air samples are collected in stainless steel summa canisters over an approximately 8-hour period.
3. Air samples are analyzed by EuroFins TestAmerica of Burlington, VT.
4. Results and action levels are listed in parts per billion volume/volume (ppb v/v).
5. An upstream ambient air sample was not collected on March 18, 2021 due to a problem with the sampling equipment.

**Prepared by Rhode Island Energy for the Businesses and Residents Located Near the Former Tidewater Facility  
Weekly Ambient Air Sampling Results**

Sample Date	Compounds				
	Benzene	Toluene	Ethylbenzene	Total Xylenes	Naphthalene
	(ppb v/v)				
12-16-21 DOWNWIND	0.15	0.21	< 0.2	0.38	0.89
12-16-21 UPWIND	0.13	0.16	< 0.2	< 0.7	< 0.5
12-22-21 DOWNWIND	0.27	0.39	< 0.2	< 0.7	< 0.5
12-22-21 UPWIND	0.29	0.47	0.12	< 0.5	< 0.5
12-29-21 UPWIND	0.19	0.28	< 0.2	< 0.7	< 0.5
12-29-21 DOWNWIND	0.26	0.53	0.19	1.0	< 0.5
01-05-2022 UPWIND	0.28	0.38	0.14	0.38	0.2
01-05-2022 DOWNWIND	0.40	1.10	0.16	0.5	0.71
1-13-22 UPWIND	0.49	0.91	0.15	0.59	< 0.5
1-13-22 DOWNWIND	0.83	1.40	0.19	0.79	< 0.5
1-20-22 DOWNWIND	0.18	0.32	0.11	0.34	0.17
1-20-22 UPWIND	0.14	1.40	< 0.2	< 0.7	< 0.5
UPWIND 012722	0.24	0.26	< 0.2	< 0.7	< 0.5
DOWNWIND 012722	0.30	1.0	< 0.2	0.4	< 0.5
2/3/22 UPWIND	0.27	0.50	0.1	0.28	< 0.5
2/3/22 DOWNWIND	0.30	0.49	0.12	0.46	0.22
2-10-22 UPWIND	0.17	0.27	< 0.2	< 0.7	< 0.5
2-10-22 DOWNWIND	0.19	0.22	< 0.2	< 0.7	< 0.5
2-17-22 UPWIND	< 0.2	0.11	< 0.2	< 0.7	< 0.5
2-17-22 DOWNWIND	0.18	0.66	0.26	1.5	1.1
2-24-22 UPWIND	< 0.2	0.11	< 0.2	< 0.7	0.17
2-24-22 DOWNWIND	< 0.2	< 0.2	< 0.2	< 0.7	< 0.5
3-03-22 UPWIND	0.11	< 0.2	< 0.2	< 0.7	< 0.5
3-03-22 DOWNWIND	0.14	< 0.2	< 0.2	< 0.7	< 0.5
3-10-22 UPWIND	0.16	0.31	0.13	0.4	0.26
3-10-22 DOWNWIND	0.14	0.18	< 0.2	< 0.7	< 0.5
3-17-22 UPWIND	0.22	0.61	0.14	0.49	< 0.5
3-17-22 DOWNWIND	0.19	0.25	< 0.2	0.12	< 0.5
3-24-22 UPWIND	0.18	< 0.3	< 0.3	< 1.1	< 0.75
3-24-22 DOWNWIND	< 0.2	< 0.2	< 0.2	< 0.7	< 0.5
3-31-22 UPWIND	0.14	0.22	< 0.2	< 0.7	< 0.5
3-31-22 DOWNWIND	0.17	0.37	0.12	0.40	< 0.5
4-7-22 UPWIND	0.11	0.16	< 0.2	< 0.7	< 0.5
4-7-22 DOWNWIND	0.15	0.24	< 0.2	< 0.7	< 0.5
4-15-22 UPWIND	0.13	0.29	< 0.2	0.095	< 0.5
4-15-22 DOWNWIND	0.095	0.19	0.1	< 0.7	< 0.5
4-20-22 UPWIND	0.19	0.22	0.13	0.42	< 0.5
4-20-22 DOWNWIND	0.13	0.14	< 0.2	< 0.7	0.18
4-26-22 UPWIND	< 0.2	< 0.2	< 0.2	< 0.7	< 0.5
4-26-22 DOWNWIND	0.22	0.13	< 0.2	< 0.7	< 0.5
5-4-22 UPWIND	0.11	0.22	< 0.5	< 0.7	< 0.5
5-4-22 DOWNWIND	0.11	0.24	< 0.5	< 0.7	< 0.5
5-12-22 UPWIND	< 0.2	0.11	< 0.2	< 0.7	< 0.5
5-12-22 DOWNWIND	< 0.21	0.10	< 0.21	< 0.75	< 0.54
5-19-22 UPWIND	0.13	0.63	< 0.2	< 0.7	0.18
5-19-22 DOWNWIND	0.15	0.30	< 0.2	< 0.7	< 0.5
5-26-22 UPWIND	0.14	0.14	< 0.2	< 0.7	< 0.5
5-26-22 DOWNWIND	< 0.2	0.12	< 0.2	< 0.7	< 0.5
<b>Project Action Levels</b>	<b>6.2</b>	<b>80</b>	<b>230</b>	<b>23</b>	<b>20</b>

**Notes:**

1. The Project Action Levels are consistent with the Air Quality Monitoring Plan developed for the Site.
2. Air samples are collected in stainless steel summa canisters over an approximately 8-hour period.
3. Air samples are analyzed by EuroFins TestAmerica of Burlington, VT.
4. Results and action levels are listed in parts per billion volume/volume (ppb v/v).
5. An upstream ambient air sample was not collected on March 18, 2021 due to a problem with the sampling equipment.