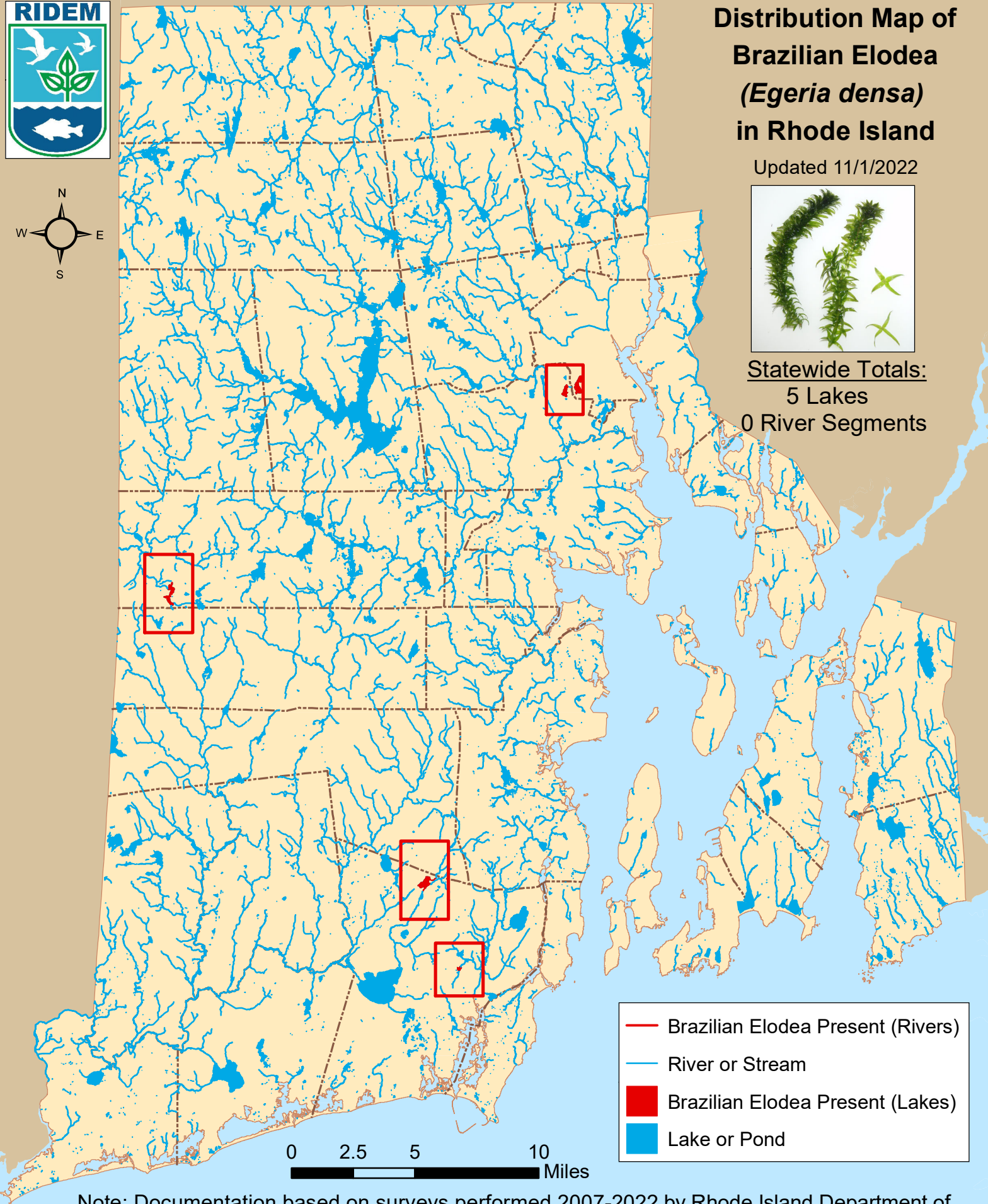


Distribution Map of Brazilian Elodea (*Egeria densa*) in Rhode Island

Updated 11/1/2022



Statewide Totals:
5 Lakes
0 River Segments



Note: Documentation based on surveys performed 2007-2022 by Rhode Island Department of Environmental Management (RIDEM) Office of Water Resources. AIS refers only to those plant species present in the floating and submergent plant communities. More information available online: <http://www.dem.ri.gov/programs/water/quality/surface-water/aisplant.php>



Distribution of Brazilian elodea (*Egeria densa*) in RI

river segments listed first alphabetically; then lakes listed by city or town

<u>Town</u>	<u>Waterbody Name</u>	<u>First documented</u>	<u>Last Surveyed</u>
<u>Coventry</u>			
1	Arnold Pond	9/2/2009	9/2/2009
<u>Cranston</u>			
2	Spectacle Pond	9/26/2012	9/26/2012
<u>Providence</u>			
3	Mashapaug Pond	8/8/2019	8/8/2019
<u>South Kingstown</u>			
4	Hundred Acre Pond	9/3/2009	9/3/2009
5	Peace Dale Reservoir	7/6/2017	8/10/2017