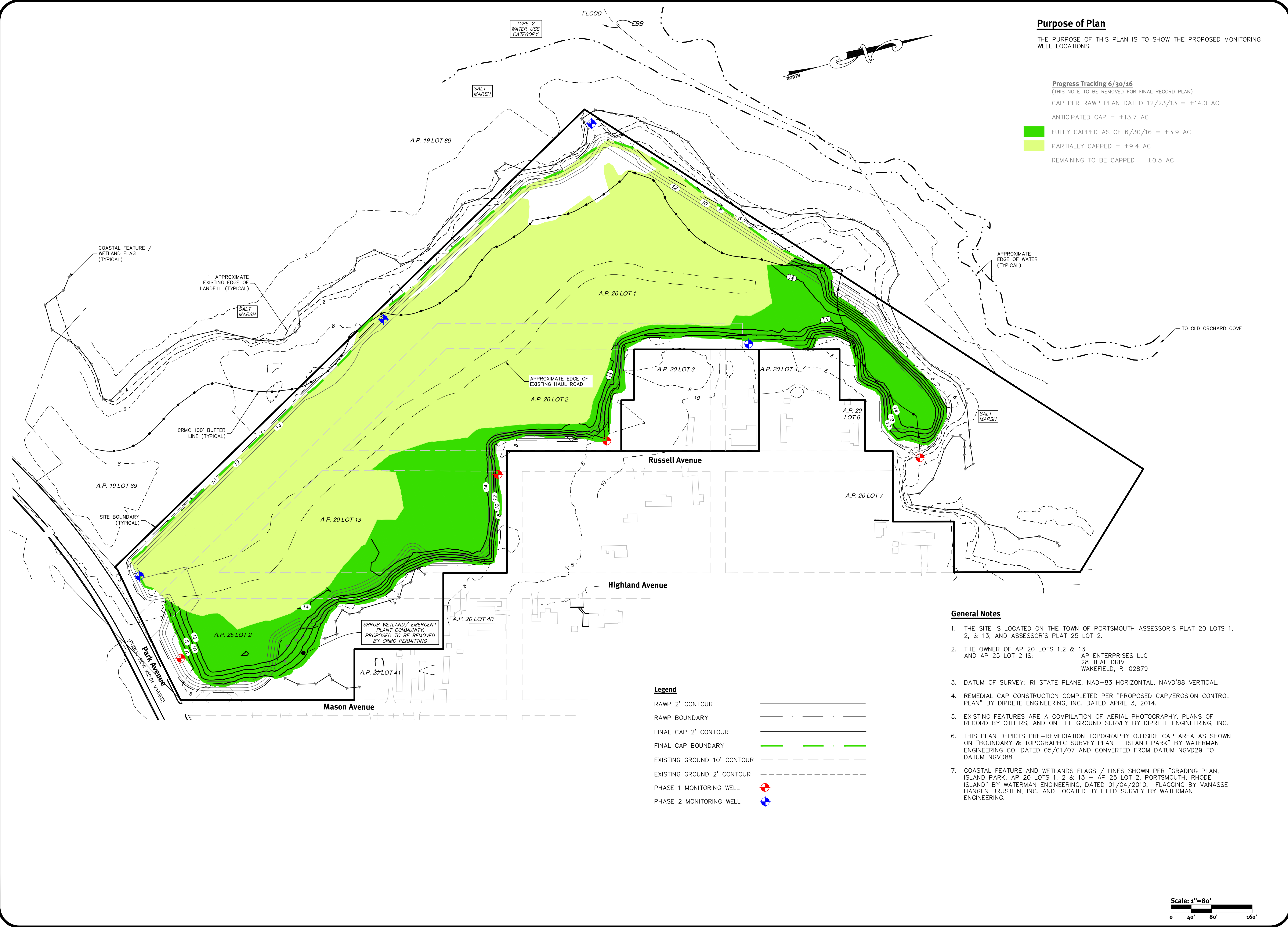


\\stor01\p\demain\projects\2057-001 park avenue\autocad drawings\2057-001_ehlt.dwg Plotdate: 2/23/2017



Purpose of Plan
 THE PURPOSE OF THIS PLAN IS TO SHOW THE PROPOSED MONITORING WELL LOCATIONS.

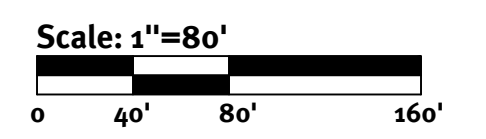
Progress Tracking 6/30/16
 (THIS NOTE TO BE REMOVED FOR FINAL RECORD PLAN)
 CAP PER RAWP PLAN DATED 12/23/13 = ±14.0 AC
 ANTICIPATED CAP = ±13.7 AC
 FULLY CAPPED AS OF 6/30/16 = ±3.9 AC
 PARTIALLY CAPPED = ±9.4 AC
 REMAINING TO BE CAPPED = ±0.5 AC

General Notes

1. THE SITE IS LOCATED ON THE TOWN OF PORTSMOUTH ASSESSOR'S PLAT 20 LOTS 1, 2, & 13, AND ASSESSOR'S PLAT 25 LOT 2.
2. THE OWNER OF AP 20 LOTS 1, 2 & 13 AND AP 25 LOT 2 IS:
 AP ENTERPRISES LLC
 28 TEAL DRIVE
 WAKEFIELD, RI 02879
3. DATUM OF SURVEY: RI STATE PLANE, NAD-83 HORIZONTAL, NAVD'88 VERTICAL.
4. REMEDIAL CAP CONSTRUCTION COMPLETED PER "PROPOSED CAP/EROSION CONTROL PLAN" BY DIPRETE ENGINEERING, INC. DATED APRIL 3, 2014.
5. EXISTING FEATURES ARE A COMPILATION OF AERIAL PHOTOGRAPHY, PLANS OF RECORD BY OTHERS, AND ON THE GROUND SURVEY BY DIPRETE ENGINEERING, INC.
6. THIS PLAN DEPICTS PRE-REMEDIATION TOPOGRAPHY OUTSIDE CAP AREA AS SHOWN ON "BOUNDARY & TOPOGRAPHIC SURVEY PLAN - ISLAND PARK" BY WATERMAN ENGINEERING CO. DATED 05/01/07 AND CONVERTED FROM DATUM NGVD29 TO DATUM NGVD88.
7. COASTAL FEATURE AND WETLANDS FLAGS / LINES SHOWN PER "GRADING PLAN, ISLAND PARK, AP 20 LOTS 1, 2 & 13 - AP 25 LOT 2, PORTSMOUTH, RHODE ISLAND" BY WATERMAN ENGINEERING, DATED 01/04/2010. FLAGGING BY VANASSE HANGEN BRUSTLIN, INC. AND LOCATED BY FIELD SURVEY BY WATERMAN ENGINEERING.

Legend

- RAWP 2' CONTOUR
- RAWP BOUNDARY
- FINAL CAP 2' CONTOUR
- FINAL CAP BOUNDARY
- EXISTING GROUND 10' CONTOUR
- EXISTING GROUND 2' CONTOUR
- PHASE 1 MONITORING WELL
- PHASE 2 MONITORING WELL



DiPrete Engineering
 Two Stafford Court Cranston, RI 02920
 tel 401-943-1000 fax 401-664-6006 www.DiPrete-Eng.com
Engineers Planners Surveyors

CAPPING PROGRESS
8/11/16

NO.	DATE	DESCRIPTION	BY
1	02-23-17	FOR SUBMISSION TO RI EAM	MJD/ADD
2	02-23-17	FOR SUBMISSION TO RI EAM	MJD/ADD
3			
4			
5			
6			
7			
8			
9			
10			

Checked By: ADD

Landfill Monitoring Plan
Former Portsmouth Landfill
 Assessor's Map 20 Lots 1, 2 & 13 Assessors Map 25 Lot 2
 Park Avenue, Portsmouth, Rhode Island
 Owner:
AP Enterprises, LLC
 28 Teal Drive, Wakefield, Rhode Island 02879

DI JOB NO: 2057-001 Copyright 2016 by DiPrete Engineering Associates, Inc.

SHEET **1** OF 1