

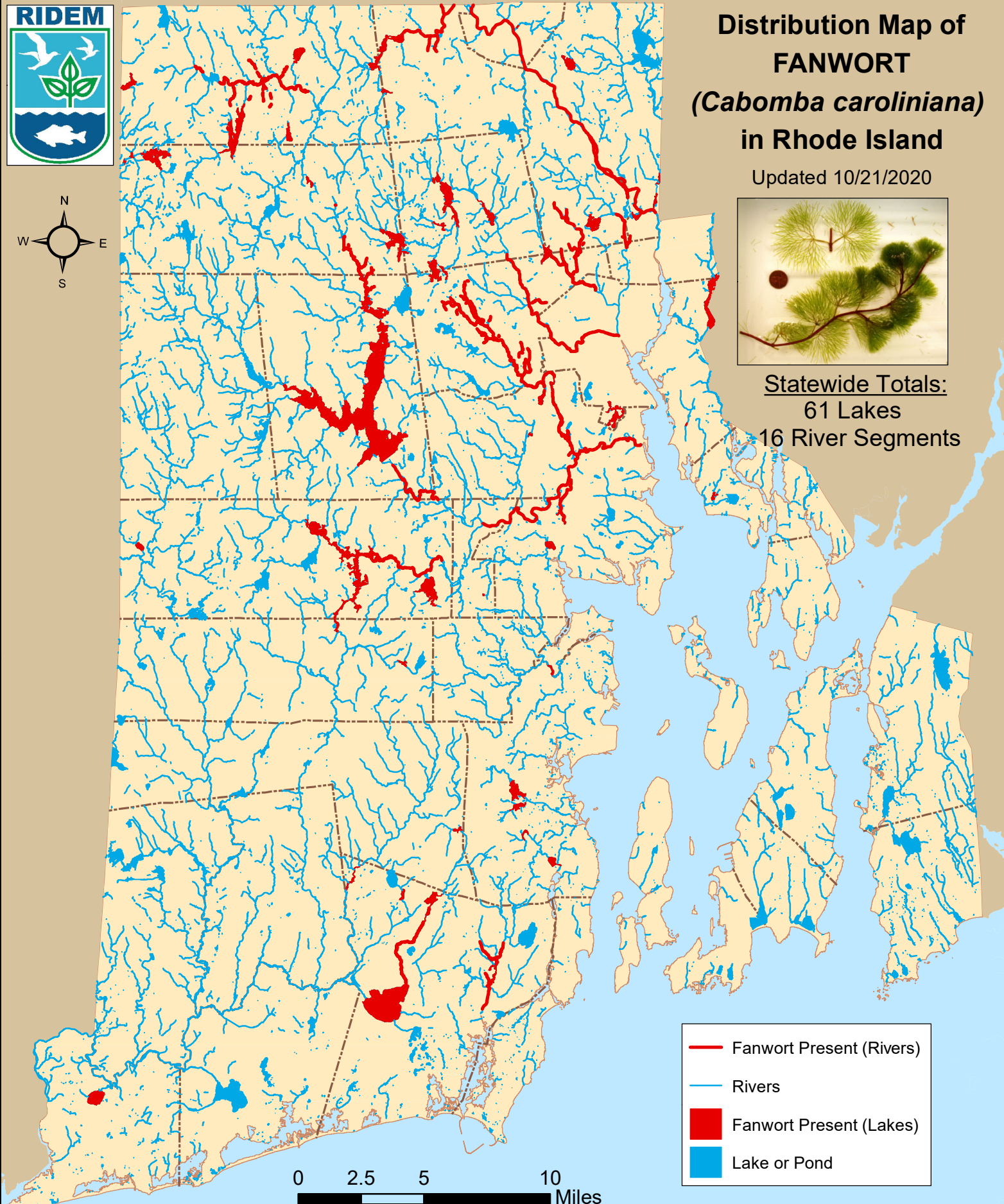


Distribution Map of FANWORT (*Cabomba caroliniana*) in Rhode Island

Updated 10/21/2020



Statewide Totals:
61 Lakes
16 River Segments



Note: Documentation based on surveys performed 2007-2020 by Rhode Island Department of Environmental Management (RIDEM) Office of Water Resources. AIS refers only to those plant species present in the floating and submergent plant communities. More information available online: <http://www.dem.ri.gov/programs/water/quality/surface-water/aisplant.php>



Distribution of fanwort (*Cabomba caroliniana*) in RI

river segments listed first alphabetically; then lakes listed by city or town

<u>Town</u>	<u>Waterbody Name</u>	<u>First documented</u>	<u>Last Surveyed</u>
<u>RIVERS</u>			
1	Blackstone River (Seg A)	7/29/2008	8/11/2020
2	Branch River & Tribs (Seg B)	7/15/2009	7/15/2009
3	Chipuxet River (Seg C)	10/2/2009	10/2/2009
4	Clear River & Tribs (Seg C)	6/25/2009	8/15/2018
5	Moshassuck River & Tribs (Seg B)	8/17/2009	8/17/2009
6	Pawtuxet River (Main Stem)	7/30/2008	9/9/2020
7	Pawtuxet River (North Branch Seg B)	6/17/2019	6/17/2019
8	Pawtuxet River (South Branch Seg A)	6/27/2018	6/27/2018
9	Peeptoad Brook & Tribs	7/1/2008	7/1/2008
10	Pocasset River & Tribs (Seg A)	7/1/2019	7/1/2019
11	Pocasset River & Tribs (Seg B)	8/8/2018	9/5/2018
12	Saugatucket River & Tribs	7/20/2010	7/20/2010
13	Three Pond Brook	6/19/2012	6/19/2012
14	West River & Tribs (Seg B)	7/14/2009	7/14/2009
15	Woonasquatucket River & Tribs (Seg C)	8/25/2009	6/4/2019
16	Woonasquatucket River (Seg D)	6/17/2009	6/28/2019
<u>Barrington</u>			
17	Echo Lake	9/11/2012	9/17/2020



Distribution of fanwort (*Cabomba caroliniana*) in RI

river segments listed first alphabetically; then lakes listed by city or town

<u>Town</u>	<u>Waterbody Name</u>	<u>First documented</u>	<u>Last Surveyed</u>
<u>Burrillville</u>			
18	Echo Lake (Pascoag Reservoir)	9/25/2007	9/13/2012
19	Spring Lake (Herring Pond)	9/25/2007	6/8/2018
20	Sucker Pond	10/9/2009	8/20/2018
21	Wakefield Pond	9/10/2007	8/22/2017
<u>Central Falls</u>			
22	Valley Falls Pond	8/9/2017	8/9/2017
<u>Coventry</u>			
23	Carbuncle Pond	9/5/2007	8/31/2020
24	Flat River Reservoir (Johnson Pond)	9/5/2007	9/21/2018
25	Maple Root Pond	7/27/2016	7/27/2016
26	Tiogue Lake	9/5/2007	9/9/2020
<u>Cranston</u>			
27	Meshanticut Pond	8/6/2018	9/11/2020
28	Print Works Pond	8/7/2009	8/7/2009
29	Randall Pond	7/13/2011	7/19/2017
<u>Cumberland</u>			
30	Happy Hollow Pond	8/18/2010	8/18/2010
31	Robin Hollow Pond	8/18/2010	8/18/2010
32	Sneech Pond	6/3/2010	9/24/2018
33			



Distribution of fanwort (*Cabomba caroliniana*) in RI

river segments listed first alphabetically; then lakes listed by city or town

<u>Town</u>	<u>Waterbody Name</u>	<u>First documented</u>	<u>Last Surveyed</u>
	Sylvn's Pond (Sylvn's Brook Pond)	8/7/2014	10/4/2017
<u>East Providence</u>			
34	Central Pond	9/30/2009	8/13/2020
35	Turner Reservoir	8/12/2020	8/12/2020
36	Willet Pond	9/11/2012	9/17/2020
<u>Exeter</u>			
37	The Reservoir	7/29/2009	7/29/2009
38	Warwick Sportsman's Association Pond	10/14/2016	9/24/2018
<u>Glocester</u>			
39	Bowdish Reservoir	9/20/2010	6/15/2018
40	Clarksville Pond	6/30/2010	8/24/2018
41	Hawkins Pond (Glocester)	9/28/2016	9/28/2016
42	Sawmill Pond	6/30/2010	9/5/2018
43	Spring Grove Pond	10/5/2009	6/8/2018
44	Waterman Reservoir	7/17/2009	7/27/2016
<u>Johnston, Smithfield</u>			
45	Slack Reservoir	7/13/2009	10/19/2011
<u>Lincoln</u>			
46	Olney Pond	9/6/2007	7/16/2020
<u>North Kingstown</u>			
47	Belleville Ponds	9/10/2007	8/6/2020



Distribution of fanwort (*Cabomba caroliniana*) in RI

river segments listed first alphabetically; then lakes listed by city or town

<u>Town</u>	<u>Waterbody Name</u>	<u>First documented</u>	<u>Last Surveyed</u>
48	Carr Pond (N. Kingstown)	9/28/2009	6/16/2016
49	Potowomut Pond	8/29/2008	8/29/2008
50	Secret Lake	7/3/2009	6/18/2010
51	Silver Spring Lake	9/10/2007	8/16/2017
<u>North Providence</u>			
52	Geneva Pond	7/17/2009	5/27/2010
53	Wenscott Reservoir (Twin Rivers)	6/10/2009	8/3/2020
<u>North Smithfield</u>			
54	Slatersville Reservoir	10/9/2009	7/20/2017
55	Tarkiln Pond	6/25/2009	8/30/2018
<u>Providence</u>			
56	Roger Williams Park Ponds	9/14/2009	7/3/2020
<u>Scituate</u>			
57	Peep-toad Pond	8/23/2012	8/23/2012
58	Regulating Reservoir	6/17/2010	7/11/2012
59	Scituate Reservoir	8/2/2011	8/3/2011
<u>Smithfield</u>			
60	Georgiaville Pond	9/15/2007	6/28/2019
61	Hawkins Pond	6/20/2011	9/14/2018
62	Lower Sprague Reservoir	8/13/2020	8/13/2020
63			



Distribution of fanwort (*Cabomba caroliniana*) in RI

river segments listed first alphabetically; then lakes listed by city or town

<u>Town</u>	<u>Waterbody Name</u>	<u>First documented</u>	<u>Last Surveyed</u>
	Woonasquatucket Reservoir (Stump Pond)	9/26/2007	7/31/2018
<u>South Kingstown</u>			
64	Barber Pond	8/29/2007	7/27/2017
65	Glen Rock Reservoir	9/6/2018	9/6/2018
66	Hundred Acre Pond	9/3/2009	9/3/2009
67	Saugatucket Pond	6/22/2016	6/22/2016
68	Thirty Acre Pond	9/3/2009	9/3/2009
69	Worden Pond	10/2/2009	10/2/2009
<u>Warwick</u>			
70	Gorton Pond	6/15/2010	9/9/2020
71	Three Ponds	9/4/2008	9/4/2008
72	Three Ponds (northern basin)	10/4/2017	10/4/2017
<u>West Greenwich</u>			
73	Reynolds Pond	9/5/2007	6/16/2010
74	Tarbox Pond	9/5/2007	8/17/2017
<u>West Warwick</u>			
75	Juniper Drive Pond	9/24/2020	9/24/2020
<u>Westerly</u>			
76	Chapman Pond	6/23/2016	7/14/2020
<u>Woonsocket</u>			
77	Sylvestre Pond	10/4/2012	8/7/2020