

Distribution Map of Aquatic Invasive Species (AIS) in Rhode Island

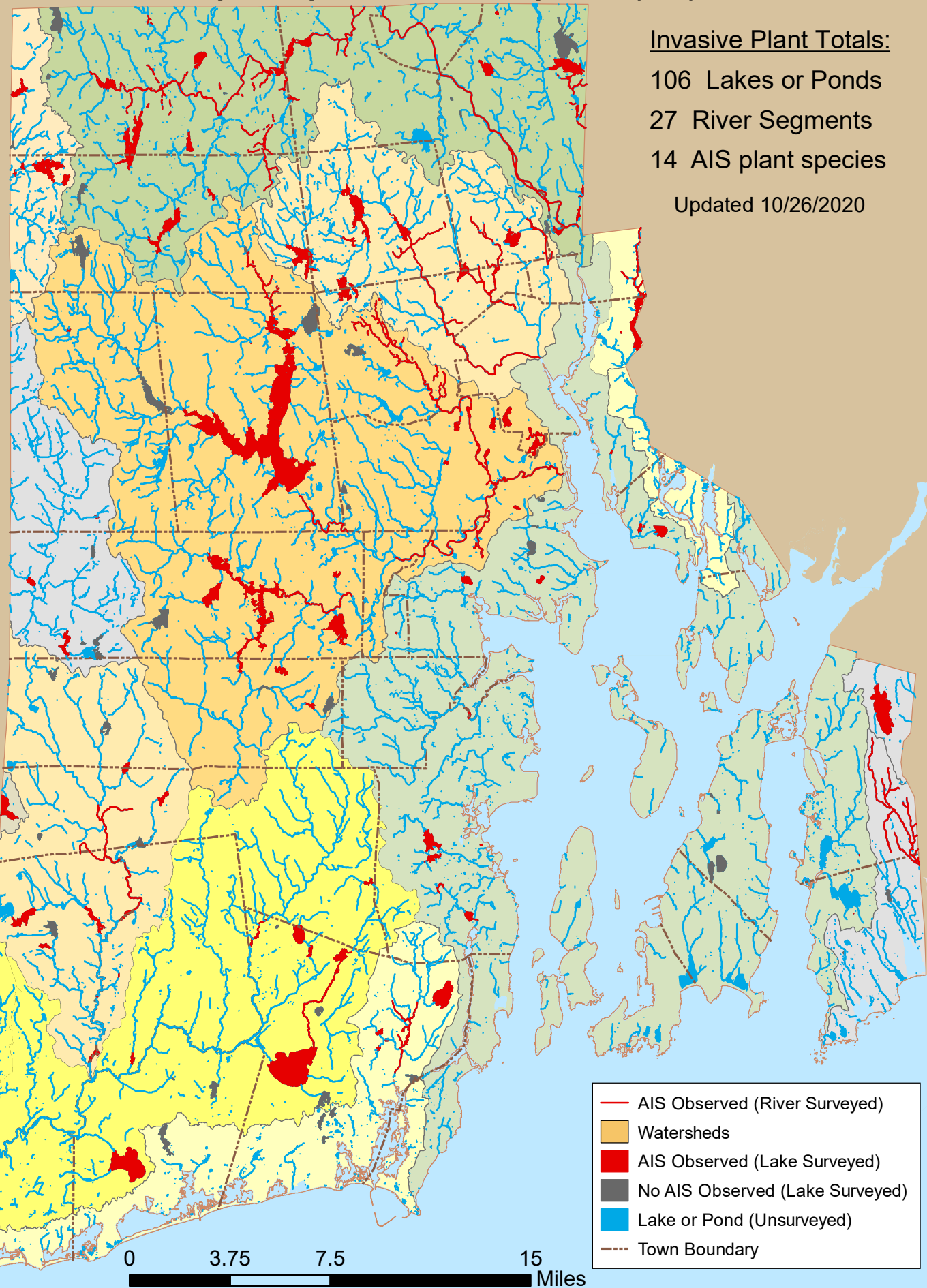
Invasive Plant Totals:

106 Lakes or Ponds

27 River Segments

14 AIS plant species

Updated 10/26/2020



- AIS Observed (River Surveyed)
- Watersheds
- AIS Observed (Lake Surveyed)
- No AIS Observed (Lake Surveyed)
- Lake or Pond (Unsurveyed)
- - - Town Boundary

Note: Documentation based on surveys performed 2007-2020 by Rhode Island Department of Environmental Management (RIDEM) Office of Water Resources. AIS refers only to those plant species present in the floating and submergent plant communities. More information available online: <http://www.dem.ri.gov/programs/water/quality/surface-water/aisplant.php>



Rhode Island Freshwaters with Aquatic Invasive Plants

rivers listed first, then lakes listed by city or town, alphabetically

<u>Town</u>	<u>Waterbody</u>	<u>Common Name</u>
<u>RIVERS</u>		
1	Abbott Run Brook North & Tribs	mudmat variable milfoil
2	Adamsville Brook & Tribs	variable milfoil
3	Blackstone River (Seg A)	curly-leaf pondweed Eurasian milfoil fanwort variable milfoil water chestnut
4	Branch River & Tribs (Seg A)	variable milfoil
5	Branch River & Tribs (Seg B)	fanwort variable milfoil
6	Chipuxet River (Seg C)	fanwort
7	Clear River & Tribs (Seg C)	fanwort variable milfoil
8	Clear River (Seg D)	variable milfoil
9	Moshassuck River & Tribs (Seg B)	Eurasian milfoil fanwort
10	Pawcatuck River & Tribs	variable milfoil water hyacinth
11	Pawtuxet River (Main Stem)	curly-leaf pondweed fanwort variable milfoil
12	Pawtuxet River (North Branch Seg B)	fanwort
13	Pawtuxet River (South Branch Seg A)	curly-leaf pondweed



Rhode Island Freshwaters with Aquatic Invasive Plants

rivers listed first, then lakes listed by city or town, alphabetically

<u>Town</u>	<u>Waterbody</u>	<u>Common Name</u>
<u>RIVERS</u>		
13	Pawtuxet River (South Branch Seg A)	fanwort variable milfoil
14	Peepetoad Brook & Tribs	fanwort
15	Pocasset River & Tribs (Seg A)	curly-leaf pondweed fanwort
16	Pocasset River & Tribs (Seg B)	curly-leaf pondweed fanwort
17	Saugatucket River & Tribs	fanwort variable milfoil
18	Tarkiln Brook & Tribs (Seg A)	variable milfoil
19	Tarkiln Brook & Tribs (Seg B)	variable milfoil
20	Ten Mile River & Tribs (Seg A)	curly-leaf pondweed variable milfoil
21	Three Pond Brook	curly-leaf pondweed fanwort
22	West River & Tribs (Seg B)	fanwort
23	Wood River & Tribs (Seg A)	variable milfoil
24	Wood River (Seg B)	variable milfoil
25	Woonasquatucket River & Tribs (Seg B)	variable milfoil
26	Woonasquatucket River & Tribs (Seg C)	fanwort variable milfoil
27	Woonasquatucket River (Seg D)	fanwort



Rhode Island Freshwaters with Aquatic Invasive Plants

rivers listed first, then lakes listed by city or town, alphabetically

<u>Town</u>	<u>Waterbody</u>	<u>Common Name</u>
<u>RIVERS</u>		
	27	
	Woonasquatucket River (Seg D)	variable milfoil
<u>Barrington</u>		
	28	
	Brickyard Pond	curly-leaf pondweed
	29	
	Echo Lake	fanwort
<u>Burrillville</u>		
	30	
	Echo Lake (Pascoag Reservoir)	fanwort variable milfoil
	31	
	Round Top State Pond	variable milfoil
	32	
	Spring Lake (Herring Pond)	fanwort inflated bladderwort variable milfoil
	33	
	Sucker Pond	fanwort variable milfoil
	34	
	Wakefield Pond	fanwort
	35	
	Wilson Reservoir	inflated bladderwort
<u>Central Falls</u>		
	36	
	Valley Falls Pond	Eurasian milfoil fanwort variable milfoil water chestnut
<u>Charlestown</u>		
	37	
	Watchaug Pond	inflated bladderwort
<u>Coventry</u>		
	38	
	Arnold Pond	Brazilian elodea



Rhode Island Freshwaters with Aquatic Invasive Plants

rivers listed first, then lakes listed by city or town, alphabetically

<u>Town</u>	<u>Waterbody</u>	<u>Common Name</u>
<u>Coventry</u>		
39	Carbuncle Pond	fanwort mudmat variable milfoil
40	Coventry Reservoir (Stump Pond)	variable milfoil
41	Flat River Reservoir (Johnson Pond)	fanwort inflated bladderwort variable milfoil
42	Maple Root Pond	fanwort
43	Tiogue Lake	fanwort spiny naiad variable milfoil
44	Upper Dam Pond	Eurasian milfoil spiny naiad variable milfoil
<u>Cranston</u>		
45	Blackamore Pond	curly-leaf pondweed
46	Meshanticut Pond	fanwort mudmat sacred lotus variable milfoil
47	Print Works Pond	fanwort
48	Randall Pond	fanwort mudmat
49	Spectacle Pond	Brazilian elodea
<u>Cumberland</u>		
50		



Rhode Island Freshwaters with Aquatic Invasive Plants

rivers listed first, then lakes listed by city or town, alphabetically

<u>Town</u>	<u>Waterbody</u>	<u>Common Name</u>
<u>Cumberland</u>		
50	Arnold Mills Reservoir (Pawtucket Reservoir)	variable milfoil
51	Carls Pond	variable milfoil water chestnut
52	Happy Hollow Pond	fanwort variable milfoil
53	Robin Hollow Pond	fanwort variable milfoil
54	Sneech Pond	fanwort variable milfoil
55	Sylvn's Pond (Sylvn's Brook Pond)	fanwort variable milfoil water hyacinth
<u>East Providence</u>		
56	Central Pond	curly-leaf pondweed fanwort variable milfoil water chestnut
57	Lakeside Cemetery Pond	water chestnut
58	Turner Reservoir	curly-leaf pondweed fanwort water chestnut
59	Willet Pond	fanwort variable milfoil
<u>Exeter</u>		
60	Beach Pond	inflated bladderwort mudmat



Rhode Island Freshwaters with Aquatic Invasive Plants

rivers listed first, then lakes listed by city or town, alphabetically

<u>Town</u>	<u>Waterbody</u>	<u>Common Name</u>
<u>Exeter</u>		
60	Beach Pond	variable milfoil
61	Boone Lake	variable milfoil
62	Breakheart Pond	curly-leaf pondweed variable milfoil
63	The Reservoir	fanwort
64	Warwick Sportsman's Association Pond	fanwort
<u>Foster</u>		
65	Porters Pond	water chestnut
66	Shippee Saw Mill Pond	variable milfoil
<u>Glocester</u>		
67	Bowdish Reservoir	fanwort variable milfoil
68	Clarksville Pond	fanwort variable milfoil
69	Hawkins Pond (Glocester)	fanwort variable milfoil
70	Keech Pond	variable milfoil
71	Lake Washington	mudmat variable milfoil
72	Sawmill Pond	fanwort variable milfoil
73	Smith & Sayles Reservoir	variable milfoil



Rhode Island Freshwaters with Aquatic Invasive Plants

rivers listed first, then lakes listed by city or town, alphabetically

<u>Town</u>	<u>Waterbody</u>	<u>Common Name</u>
<u>Glocester</u>		
74	Spring Grove Pond	fanwort inflated bladderwort variable milfoil
75	Waterman Reservoir	fanwort spiny naiad variable milfoil
<u>Hopkinton</u>		
76	Alton Pond	variable milfoil
77	Ashville Pond	variable milfoil
78	Locustville Pond	variable milfoil
79	Solitude Springs Farm Ponds	water chestnut yellow floating heart
80	Wincheck Pond	variable milfoil
81	Wyoming Pond	variable milfoil
<u>Johnston</u>		
82	Pocasset Pond (Johnson Mem Park Pond)	parrot feather
<u>Johnston, Smithfi</u>		
83	Slack Reservoir	fanwort mudmat spiny naiad variable milfoil
<u>Lincoln</u>		
84	Barney Pond	curly-leaf pondweed Eurasian milfoil mudmat water chestnut



Rhode Island Freshwaters with Aquatic Invasive Plants

rivers listed first, then lakes listed by city or town, alphabetically

<u>Town</u>	<u>Waterbody</u>	<u>Common Name</u>
<u>Lincoln</u>		
85	Olney Pond	curly-leaf pondweed Eurasian milfoil fanwort spiny naiad variable milfoil water chestnut
<u>Little Compton</u>		
86	Peckham Rd. Pond	yellow floating heart
87	Quicksand Pond	Eurasian milfoil
<u>North Kingstown</u>		
88	Belleville Ponds	fanwort variable milfoil water chestnut
89	Carr Pond (N. Kingstown)	fanwort variable milfoil
90	Mill Pond (NK)	variable milfoil
91	Potowomut Pond	fanwort variable milfoil
92	Secret Lake	fanwort variable milfoil
93	Silver Spring Lake	fanwort variable milfoil
<u>North Providence</u>		
94	Geneva Pond	fanwort
95	Wenscott Reservoir (Twin Rivers)	curly-leaf pondweed Eurasian milfoil



Rhode Island Freshwaters with Aquatic Invasive Plants

rivers listed first, then lakes listed by city or town, alphabetically

<u>Town</u>	<u>Waterbody</u>	<u>Common Name</u>
<u>North Providence</u>		
95	Wenscott Reservoir (Twin Rivers)	fanwort spiny naiad variable milfoil
<u>North Smithfield</u>		
96	Slatersville Reservoir	Eurasian milfoil fanwort spiny naiad variable milfoil
97	Tarkiln Pond	fanwort variable milfoil
<u>Providence</u>		
98	Mashapaug Pond	Brazilian elodea
99	Roger Williams Park Ponds	curly-leaf pondweed fanwort water chestnut
<u>Richmond</u>		
100	Carolina Trout Pond	variable milfoil water hyacinth
101	Meadowbrook Pond (Sandy Pond)	curly-leaf pondweed variable milfoil
<u>Scituate</u>		
102	Dexter Road Pond	yellow floating heart
103	Peepetoad Pond	fanwort variable milfoil
104	Regulating Reservoir	curly-leaf pondweed fanwort variable milfoil



Rhode Island Freshwaters with Aquatic Invasive Plants

rivers listed first, then lakes listed by city or town, alphabetically

<u>Town</u>	<u>Waterbody</u>	<u>Common Name</u>
<u>Scituate</u>		
105	Scituate Reservoir	fanwort variable milfoil
<u>Smithfield</u>		
106	Georgiaville Pond	fanwort spiny naiad variable milfoil
107	Hawkins Pond	fanwort variable milfoil
108	Lower Sprague Reservoir	fanwort
109	Woonasquatucket Reservoir (Stump Pond)	fanwort variable milfoil
<u>South Kingstown</u>		
110	Asa Pond	variable milfoil
111	Barber Pond	fanwort inflated bladderwort variable milfoil
112	Glen Rock Reservoir	fanwort variable milfoil
113	Hundred Acre Pond	Brazilian elodea fanwort variable milfoil
114	Indian Lake	American lotus water hyacinth
115	Peace Dale Reservoir	Brazilian elodea variable milfoil
116		



Rhode Island Freshwaters with Aquatic Invasive Plants

rivers listed first, then lakes listed by city or town, alphabetically

<u>Town</u>	<u>Waterbody</u>	<u>Common Name</u>
<u>South Kingstown</u>		
116	Rocky Brook Reservoir	variable milfoil
117	Saugatucket Pond	fanwort
118	Thirty Acre Pond	fanwort variable milfoil
119	Worden Pond	fanwort variable milfoil water hyacinth
120	Yawgoo Pond	mudmat
<u>Tiverton</u>		
121	Eight Rod Farm Pond	Eurasian milfoil
122	Stafford Pond	mudmat
<u>Warwick</u>		
123	Gorton Pond	curly-leaf pondweed Eurasian milfoil fanwort mudmat
124	Sand Pond (N. of Airport)	mudmat
125	Sandy Pond (S. of Airport) (Little Pond)	mudmat
126	Three Ponds	fanwort
127	Three Ponds (northern basin)	fanwort
<u>West Greenwich</u>		
128	Mishnock Lake	variable milfoil
129		



Rhode Island Freshwaters with Aquatic Invasive Plants

rivers listed first, then lakes listed by city or town, alphabetically

<u>Town</u>	<u>Waterbody</u>	<u>Common Name</u>
<u>West Greenwich</u>		
129	Reynolds Pond	fanwort variable milfoil
130	Tarbox Pond	fanwort variable milfoil
<u>West Warwick</u>		
131	Juniper Drive Pond	Eurasian milfoil fanwort
<u>Westerly</u>		
132	Chapman Pond	American lotus curly-leaf pondweed Eurasian milfoil fanwort spiny naiad variable milfoil water chestnut
<u>Woonsocket</u>		
133	Sylvestre Pond	fanwort variable milfoil water chestnut



Rhode Island Freshwaters with Invasive Clams and Snails

rivers listed first, then lakes listed by city or town, alphabetically

<u>Town</u>	<u>Waterbody</u>	<u>Common Name</u>
<u>RIVERS</u>		
	1	
	Blackstone River (Seg A)	Chinese mystery snail Asian clam
	2	
	Cold (Cole) Brook & Tribs	Chinese mystery snail
	3	
	Pawcatuck River & Tribs (Seg E)	Asian clam
	4	
	Pawtuxet River (Main Stem)	Asian clam
	5	
	Pawtuxet River (South Branch Seg A)	Chinese mystery snail Asian clam
	6	
	Roaring Brook & Tribs	Asian clam
	7	
	Ten Mile River & Tribs (Seg A)	Asian clam
	8	
	Ten Mile River & Tribs (Seg B)	Asian clam
	9	
	Woonasquatucket River (Seg D)	Asian clam
<u>Barrington</u>		
	10	
	Echo Lake	Chinese mystery snail
<u>Burrillville</u>		
	11	
	Spring Lake (Herring Pond)	Chinese mystery snail
<u>Charlestown</u>		
	12	
	Saw Mill Pond	Chinese mystery snail
<u>Coventry</u>		
	13	
	Tiogue Lake	Asian clam
	14	
	Upper Dam Pond	Asian clam
<u>Cranston</u>		
	15	



Rhode Island Freshwaters with Invasive Clams and Snails

rivers listed first, then lakes listed by city or town, alphabetically

<u>Town</u>	<u>Waterbody</u>	<u>Common Name</u>
<u>Cranston</u>		
15	Meshanticut Pond	Chinese mystery snail
16	Randall Pond	Chinese mystery snail
<u>Cumberland</u>		
17	Carls Pond	Chinese mystery snail
18	Happy Hollow Pond	Asian clam
19	Sylvn's Pond (Sylvn's Brook Pond)	Chinese mystery snail
<u>East Providence</u>		
20	Central Pond	Asian clam Chinese mystery snail
21	Turner Reservoir	Asian clam
<u>Hopkinton</u>		
22	Locustville Pond	Asian clam
<u>Johnston</u>		
23	Oak Swamp Reservoir	Chinese mystery snail
<u>Lincoln</u>		
24	Barney Pond	Chinese mystery snail
25	Butterfly Pond	Chinese mystery snail
26	Handy Pond (Upper Rochambeau Pond)	Chinese mystery snail
27	Olney Pond	Asian clam
<u>North Kingstown</u>		
28	Belleville Ponds	Chinese mystery snail
<u>North Providence</u>		



Rhode Island Freshwaters with Invasive Clams and Snails

rivers listed first, then lakes listed by city or town, alphabetically

<u>Town</u>	<u>Waterbody</u>	<u>Common Name</u>
<u>North Providence</u>		
29	Wenscott Reservoir (Twin Rivers)	Chinese mystery snail Asian clam
<u>North Smithfield</u>		
30	Slatersville Reservoir	Chinese mystery snail
<u>Smithfield</u>		
31	Georgiaville Pond	Asian clam
32	Hawkins Pond	Chinese mystery snail
33	Woonasquatucket Reservoir (Stump Pond)	Chinese mystery snail
<u>South Kingstown</u>		
34	Larkin Pond	Asian clam
35	Peace Dale Reservoir	Asian clam Chinese mystery snail
36	Worden Pond	Asian clam
<u>Tiverton</u>		
37	Stafford Pond	Asian clam
<u>Warwick</u>		
38	Gorton Pond	Asian clam Chinese mystery snail
39	Warwick Pond	Asian clam
<u>West Greenwich</u>		
40	Mishnock Lake	Asian clam Chinese mystery snail
<u>Woonsocket</u>		



Rhode Island Freshwaters with Invasive Clams and Snails

rivers listed first, then lakes listed by city or town, alphabetically

<u>Town</u>	<u>Waterbody</u>	<u>Common Name</u>
<u>Woonsocket</u>		
41	Cass Pond	Chinese mystery snail
42	Sylvestre Pond	Chinese mystery snail

note: we recognize this list likely underestimates the number of locations hosting these species, however the locations listed have confirmed populations