

**R.I. Marine Fisheries Statutes and Regulations  
PART XVII – MAPS**

<b><u>AREA</u></b>	<b><u>MAP NO.</u></b>
Narragansett Bay Shellfish Management Areas and Spawner Sanctuaries	1
Winnapaug Pond	2
Quonochontaug Pond	3
Great Salt Pond – Block Island	4
Ninigret and Green Hill Ponds	5
Narragansett Bay Floating Fish Trap Locations	6a and 6b
Narragansett Bay Trawling Area	7
R.I. Shellfish Management Areas	8
Narragansett Bay Menhaden Management Area	9
<b><u>RI Shellfish Harvest Area Tagging Map</u></b>	<b><u>10</u></b>

# Rhode Island Shellfish Harvest Area Tagging Map

Rhode Island Department of Environmental Management  
Division of Fish and Wildlife / Office of Water Resources - Shellfish Program  
Standard Atlantic Fisheries Information System (SAFIS)

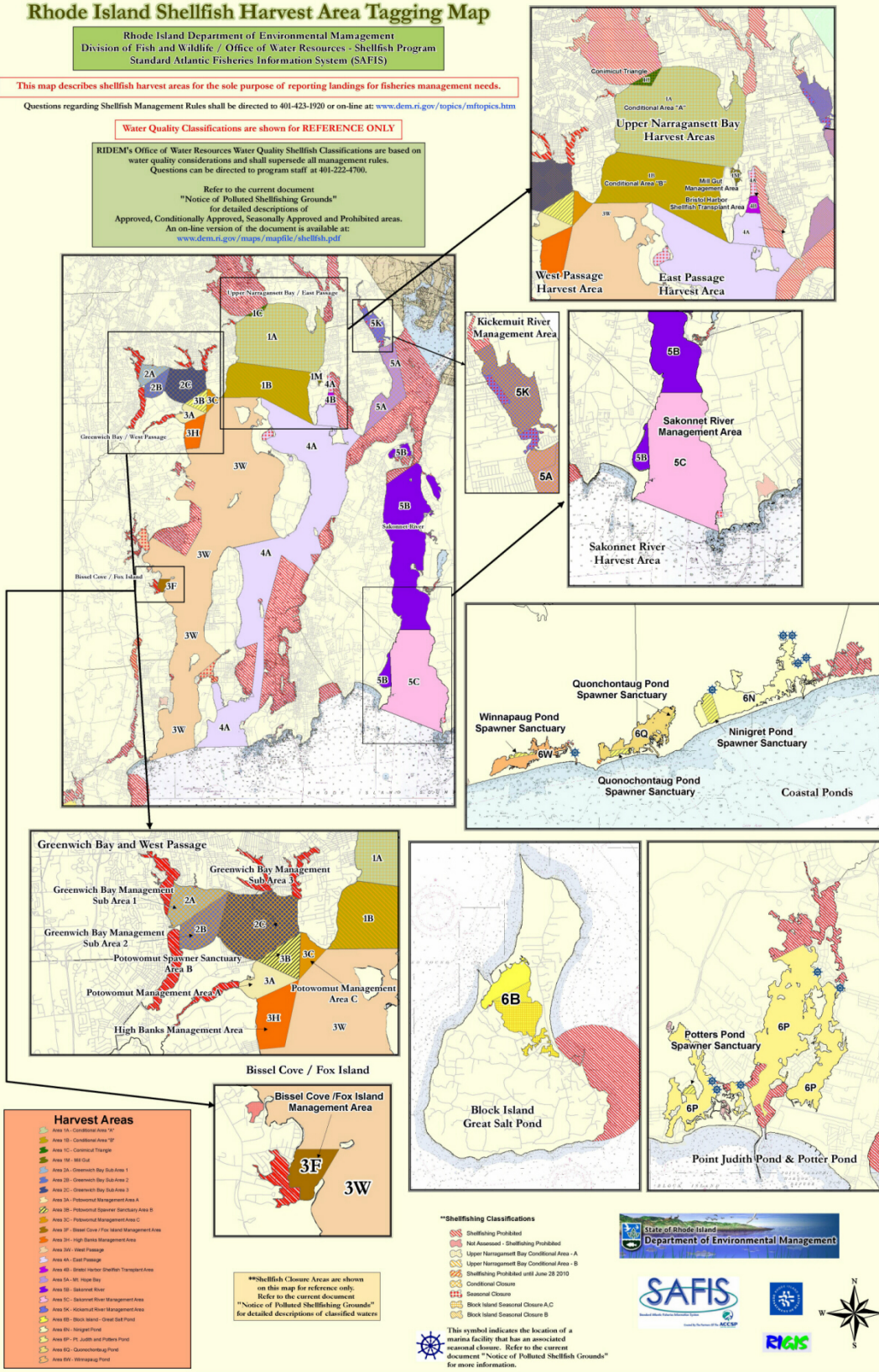
This map describes shellfish harvest areas for the sole purpose of reporting landings for fisheries management needs.

Questions regarding Shellfish Management Rules shall be directed to 401-423-1920 or on-line at: [www.dem.ri.gov/topics/mfotopics.htm](http://www.dem.ri.gov/topics/mfotopics.htm)

Water Quality Classifications are shown for REFERENCE ONLY

RIDEM's Office of Water Resources Water Quality Shellfish Classifications are based on water quality considerations and shall supersede all management rules. Questions can be directed to program staff at 401-222-4700.

Refer to the current document  
"Notice of Polluted Shellfishing Grounds"  
for detailed descriptions of  
Approved, Conditionally Approved, Seasonally Approved and Prohibited areas.  
An on-line version of the document is available at:  
[www.dem.ri.gov/maps/mapfile/shellfish.pdf](http://www.dem.ri.gov/maps/mapfile/shellfish.pdf)



Map # 10