

**RI Department of Environmental
Management**

Division of Marine Fisheries

PUBLIC HEARING

February 19, 2018



Hearing Item #1a: Recreational Black Sea Bass

2018 Proposed Management Options:

Option	Min. Size	Season	Possession Limit
<u>Option 1:</u> Status Quo	15"	5/25 – 8/31	3 fish
		9/1 – 9/21	7 fish
		9/22 – 10/21	Closed
		10/22 – 12/31	7 fish
<u>Option 2:</u> Later opening, early closure; remove mid- season closure		5/25 <u>6/21</u> – 8/31	3 fish
		9/1 – 9/21 <u>12/4</u>	7 fish <u>5 fish</u>
		9/22 – 10/21	Closed
		10/22 – 12/31	7 fish



Hearing Item #1a cont'd: Recreational Black Sea Bass

2018 Proposed Management Options cont'd:

Option	Min. Size	Season	Possession Limit
<u>Option 3:</u> Later opening; remove mid- season closure	15"	5/25 <u>6/26</u> – 8/31	3 fish
		9/1 – 9/24 <u>12/23</u>	7 fish <u>5 fish</u>
		9/22 – 10/21	Closed
		10/22 – 12/31	7 fish
<u>Option 4:</u> Later opening, incr. bag; remove mid- season closure		5/25 <u>6/26</u> – 8/31	3 fish
		9/1 – 9/24 <u>11/30</u>	7 fish <u>6 fish</u>
		9/22 – 10/21	Closed
		10/22 – 12/31	7 fish



Hearing Item #1a cont'd: Recreational Black Sea Bass

2018 Proposed Management Options cont'd:

Option	Min. Size	Season	Possession Limit
<u>Option 5:</u> Later opening; remove mid- season closure	15"	5/25 <u>7/1</u> – 8/31	3 fish
		9/1 – 9/21 <u>11/2</u>	7 fish <u>5 fish</u>
		9/22 – 10/21	Closed
		10/22 – 12/31	7 fish
<u>Option 6:</u> Even later opening; remove mid- season closure		5/25 <u>7/12</u> – 8/31	3 fish
		9/1 – 9/21 <u>12/31</u>	7 fish <u>5 fish</u>
		9/22 – 10/21	Closed
		10/22 – 12/31	7 fish
<u>Option 7:</u> Early opening; remove mid- season closure		5/25 <u>6/22</u> – 8/31	3 fish
		9/1 – 9/21 <u>10/25</u>	7 fish <u>5 fish</u>
		9/22 – 10/21	Closed
		10/22 – 12/31	7 fish



Hearing Item #1b: Recreational Scup

2018 Proposed Management Options:

Option	Mode	Min. Size	Season/Possession Limit
<u>Option 1:</u> Status Quo	General Fishery	10"	<u>May 1 – Dec. 31: 30 fish</u>
	P/C	10"	<u>May 1 – Aug. 31: 30 fish</u> <u>Sept. 1 – Oct. 31: 45 fish</u> <u>Nov. 1 – Dec. 31: 30 fish</u>
	Special Shore	9"	<u>May 1 – Dec. 31: 30 fish</u>
<u>Option 2:</u> Dec. min. size	General Fishery	10 <u>9</u> "	<u>May 1 – Dec. 31: 30 fish</u>
	P/C	10 <u>9</u> "	<u>May 1 – Aug. 31: 30 fish</u> <u>Sept. 1 – Oct. 31: 45 fish</u> <u>Nov. 1 – Dec. 31: 30 fish</u>
	Special Shore	9 <u>8</u> "	<u>May 1 – Dec. 31: 30 fish</u>



Hearing Item #1c: Commercial Scup

2018 Proposed Management Options:

Option	Min. size	Seasons	Sub-periods	Quota		Starting Poss. limit
<u>Option 1:</u> FMP compliance with single summer sub-period	9"	<u>Winter I:</u> (1/1 – 4/30)		Coastwide		50,000 lbs/vsl/day
		<u>Summer – Fall:</u> (5/1 – 10/31 9/30)	<u>Gen. Cat. Summer:</u> (5/1 – 9/17 9/30)	40% of sub- period quota	2/3 of Gen. Cat. quota	10,000 lbs/vsl/wk
			Gen. Cat. Fall: (9/18 – 10/31)		1/3 of Gen. Cat. quota	
			<u>FFT:</u> (4/1 – 10/31 9/30)	60% of sub- period quota		Unlimited
	<u>Winter II:</u> (11/1 10/1 – 12/31)		Coastwide		2,000/ 18,000* lbs/vsl/day	

Hearing Item #1d: Recreational Striped Bass

- No changes proposed for 2018

	Min. Size	Possession Limit	Season
Current Management	28"	1 fish/person/day	Open year round



Hearing Item #1e: Commerical General Category Striped Bass

2018 Proposed Management Options:

Option	Season	Alloc.	Poss. limit
<u>Option 1:</u> Maintain current management parameters; remove Sept. 15 quota adjustment provision	5/28 – 8/31 (closed Fri & Sat)	70%	5 fish/person/day; max 5 fish/vessel
	9/10 – 12/31 (closed Fri & Sat)	30%	
	If DEM determines that the quota will be exceeded or will not be met before the end of the fall season, DEM may adjust that catch rate accordingly on or after September 15 annually.		
<u>Option 2:</u> Industry proposal	5/28 – 8/31 <u>7/31</u> (closed Fri/Sat)	70%	
	9/10 – 12/31 <u>8/1 - 8/31</u> (closed Fri/Sat)	30%	
<u>Option 3:</u> Industry proposal	5/28 – 8/31 <u>5/15 – 8/23</u> (closed Fri/Sat)	70%	
	9/10 <u>8/24</u> – 12/31 (closed Fri/Sat)	30%	



Hearing Item #1e cont'd: Commerical General Category Striped Bass

2018 Proposed Management Options cont'd:

Option	Season	Alloc.	Poss. limit
<u>Option 4:</u> Industry proposal	5/28—8/31 <u>5/15 – 8/23</u> (closed Fri & Sat)	70 <u>80</u> %	5 fish/ person/ day; max 5 fish/ vessel
	9/10 <u>8/24</u> – 12/31 (closed Fri & Sat)	30 <u>20</u> %	
<u>Option 5:</u> Industry proposal	5/28—8/31 <u>5/15 - 12/31</u> (closed Fri & Sat)	70 <u>100</u> %	
	9/10—12/31 (closed Fri & Sat)	30 %	
<u>Option 6:</u> Industry proposal	5/28 – 8/31 <u>7/14</u> (closed Fri <u>Tues, Wed,</u> Sat)	70 <u>60</u> %	
	9/10—12/31 <u>7/15 - 8/31</u> (closed Fri & <u>Tues, Wed,</u> Sat)	30 <u>40</u> %	
<u>Option 7:</u> Industry proposal	5/28—8/31 <u>5/24 – 6/30</u> (closed Fri & <u>Tues, Wed,</u> Sat)	70 <u>60</u> %	5 <u>4</u> fish/person/day; max 5 <u>4</u> fish/vessel
	9/10 <u>7/15</u> – 12/31 (closed Fri <u>Tues,</u> <u>Wed,</u> Sat)	30 <u>40</u> %	



Hearing Item #1e cont'd: Commerical General Category Striped Bass

Additional proposals submitted as public comments:

Option	Season	Alloc.	Poss. limit
<u>Option 8:</u>	5/28 <u>5/27</u> – 8/31 (closed Fri & Sat)	70 <u>60</u> %	5 fish/person/ day; max 5 fish/ vessel
	9/10 <u>8/12</u> – 12/31 (closed Fri & Sat)	30 <u>40</u> %	
<u>Option 9:</u>	5/28 <u>5/23</u> – 8/31 (closed Fri & Sat <u>Sun, Mon. Tues</u>)	70 <u>60</u> %	
	9/10 <u>8/8</u> – 12/31 (closed Fri & Sat <u>Sun, Mon. Tues</u>)	30 <u>40</u> %	



Hearing Item #1f:
Proposed amendment to remove the
October 15th date from the floating fish trap
allocation transfer provision

Proposed amendment (Part 3, section 3.9.2(A)(3)):

If DEM estimates that the Floating Fish Trap sector will not fully utilize its allocation prior to the end of the season, ~~beginning on October 15,~~ the Division may ~~move~~ **transfer** the Floating Fish Trap allocation into the General Category fishery. DEM will consult with the Floating Fish Trap Licensees or their designee prior to enacting any allocation ~~roll-over~~ **transfer**, and ~~will~~ **shall** maintain written ~~correspondence in the form of a letter on file as proof~~ **documentation** of said consultation.



Hearing Item #1g: Commercial Striped Bass Floating Fish Traps

- No changes proposed for 2018

	Min. Size	Season	Possession Limit
Current Management	26"	4/1 – 12/31	Unlimited (200 lbs/day @ 70% of quota)



Hearing Item 1h: Recreational Summer Flounder

2018 Proposed Management Options:

Option	Minimum size	Season	Possession Limit
<u>Option 1:</u> Status Quo	19"	May 1 – Dec. 31	4 fish
<u>Option 2:</u> Inc. bag limit	19"	May 1 – Dec. 31	<u>6</u> fish



Hearing Item 1i: Recreational Tautog

2018 Proposed Management Options:

Option	Min. Size	Rec. and P/C Season	Poss. Limit
<p style="text-align: center;"><u>Option 1:</u> <u>Earlier Spring</u> <u>opening;</u> <u>ASMFC</u> <u>compliance;</u> <u>extend season</u></p>	16"	April 15 <u>1</u> – May 31:	3 fish/person/day*
		June 1 – July 31:	Closed
		Aug. 1 – 3 rd Sat. in Oct:	3 fish/person/day*
		3 rd Sat. in Oct. – Dec. 15 <u>31</u> :	6 <u>5</u> fish/person/day* * max. 10 fish/vessel (n/a for P/C)



Hearing Item 1j: Commercial Tautog

2018 Proposed Management Options:

Option	Min. Size	Season	Allocation	Poss. Limit
<u>Option 1:</u> <u>Status Quo</u>	16"	April 15 – May 31	40%	10 fish/vsl/day
		June 1 – July 31	Closed	
		Aug. 1 – Sept. 15	20%	10 fish/vsl/day
		Oct. 15 – Dec. 31	40%	10 fish/vsl/day
<u>Option 2:</u> <u>Earlier Spring opening</u>		April 15 1 – May 31	40%	10 fish/vsl/day
		June 1 – July 31	Closed	
		Aug. 1 – Sept. 15	20%	10 fish/vsl/day
		Oct. 15 – Dec. 31	40%	10 fish/vsl/day
<u>Option 3:</u> <u>Eliminate Spring sub-period;</u> <u>allocation adjustment</u>		April 15 – May 31	40%	10 fish/vsl/day
		June <u>Jan.</u> 1 – July 31	Closed	
		Aug. 1 – Sept. 15	20 <u>40</u> %	10 fish/vsl/day
		Oct. 15 – Dec. 31	40 <u>60</u> %	10 fish/vsl/day

Hearing Item 1k: Recreational Bluefish

- No changes proposed for 2018

Current Management	Min. size	Sub-period	Poss. Limit
	No min. size	1/1 – 12/31	15 fish



Hearing Item 1I: Commercial Bluefish

2018 Proposed Management Options:

Option	Min. size	Sub-period	Poss. Limit
<u>Option 1:</u> Change season dates	12"	1/1 – 4/30	500 lbs/vsl/wk
		5/1 – 11/11 <u>second Saturday in November</u>	6,000 lbs/vsl/wk
		11/12 <u>Second Sunday in November</u> – 12/31	500 lbs/vsl/wk
<u>Option 2:</u> Industry Proposal – bi-weekly Agg. limit	12"	1/1 – 4/30	500 <u>1,000</u> lbs/vsl/ <u>2 wks</u>
		5/1 – 11/11 <u>second Saturday in November</u>	6,000 lbs/vsl/wk
		11/12 <u>Second Sunday in November</u> – 12/31	500 lbs/vsl/wk



Hearing Item 1m: Commercial Menhaden

- Division proposal for ASMFC compliance:
 - Define non-directed, small-scale, and stationary multi-species gear as part of “Incidental Catch Fishery”
 - Non-directed: Anchored/stake gillnets, trawls, fyke nets, floating fish traps.
 - Small-scale: Cast nets, pots, hook and line, hand lines, trammel nets, bait nets.
 - Stationary multi-species: Anchored/stake gillnets, floating fish traps, fyke nets.
 - Allow 6,000 lb/vessel/day possession limit for non-directed and small scale gears upon fishery closure.
 - Allow 12,000 lb/vessel/day possession limit for stationary small-scale gear when 2 licensed individuals are on the same vessel and state quota has been reached.
 - Modify starting possession limit under state quota from unlimited to 120,000 lbs/vessel/day.



Hearing Item 1m cont'd: Commercial Menhaden

- Division proposal for ASMFC compliance cont'd:
 - Add provision stating that only one landing per purse seine operation or company per day is permitted.
 - Allow possession or taking of menhaden on any Saturday, Sunday, official state holiday, or prior to sunrise or following sunset, for non-directed gear or small-scale gear.
 - Modify call-in reporting requirement language to only apply to purse seine operations.
 - Modify episodic event set aside program language to allow participation from all gear types.
 - Modify other minor instances where “non-directed gear” was used to include non-directed and small-scale gear.
 - Please see annotated regulations for proposed language



Hearing Item 1n: Commercial Skate Bait Fishery

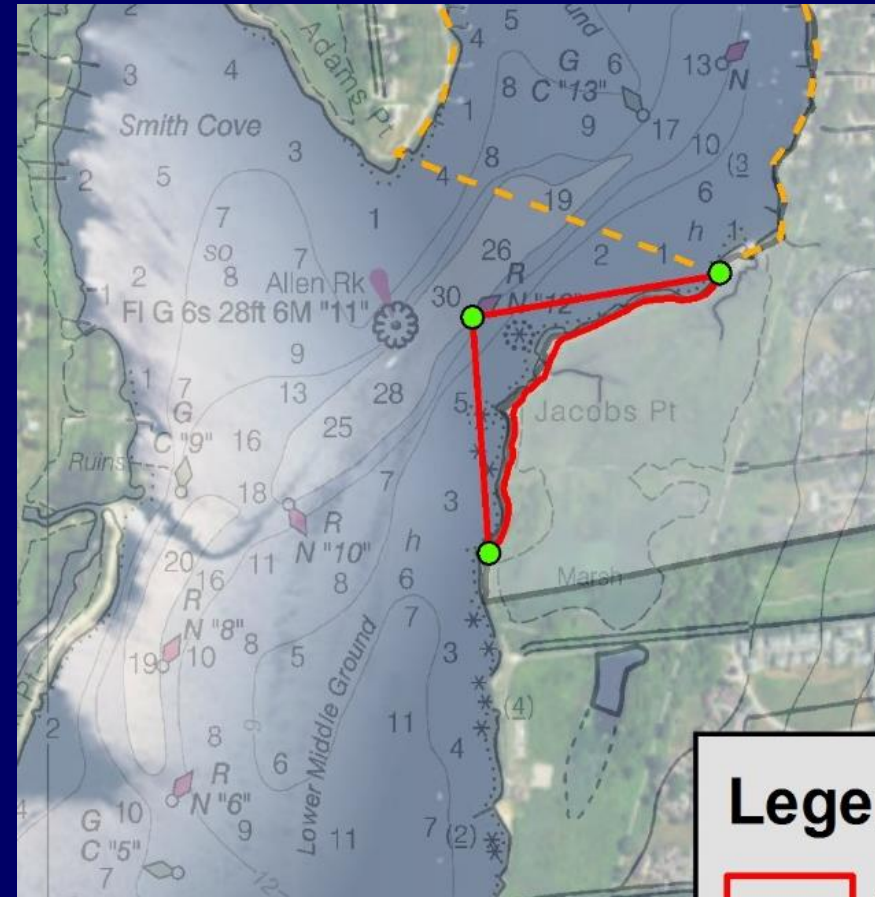
- Division proposal for compliance with NEFMC Framework 3 Adjustment

Sub-period	Poss. Limit (whole skate)
5/1 – 7/31	<u>25,000 lbs/vsl/day. Poss. limit = 8,000/vsl/day when 90% bait skate TAL landed</u>
8/1 – 10/31	<u>25,000 lbs/vsl/day. Poss. limit = 8,000/vsl/day when 90% bait skate TAL landed</u>
11/1 – 4/30	<u>12,000 lbs/vsl/day. Poss. limit = 8,000/vsl/day when 80% bait skate TAL landed</u>

- To ensure the skate bait fishery does not exceed its seasonal or annual TAL, the fishery will close when NOAA determines that 100% of the skate bait TAL for a season is to be harvested.
- To achieve the seasonal or annual TAL, incidental possession limits may be lifted, reinstating the standard seasonal possession limit.

Hearing Item 2: Proposed Jacob's Point Shellfish Management Area (Part 4, section 4.12.2(V))

- Purpose: Facilitate a collaborative project, between the Town of Warren, Roger Williams Univ., and DEM, for seeding oysters in the Warren River.
- Goals:
 - Enhanced opportunities for commercial and recreational harvest
 - Assessment of harvest impacts on enhanced stocks
 - Strong educational tool for school children and the general public.
- Proposed reduced commercial possession limit = one peck/day for oysters.



Hearing Item 2 cont'd: Proposed Jacob's Point Shellfish Management Area

Proposed language (Part 4, section 4.12.2(V)):

V. Jacobs Point Shellfish Management Area: Described as the marine waters of the Warren River south of a line extending from the DEM range marker on the shore north of Jacobs Point, located at 71°17'12.104"W, 41°42'51.541"N, to nun buoy 12; and east of a line extending from nun buoy 12 to the DEM range marker on the shore south of Jacobs Point, located at 71°17'28.61"W, 41°42'36.91"N.

1. Harvest schedule: Open daily.

2. The reduced Shellfish Management Area possession limit applies only to oysters. The commercial possession limit for oysters is one (1) peck per person per day.



Hearing Item 3a:
Proposal to broaden the floating buoy line prohibition within eight (8) feet of the surface of the water to all pots

- Proposal originated from Div. of Law enforcement.
- Requirement currently applies only to Black sea bass and Scup pots.
- Proposal is to broaden rule so is applicable to all fixed fishing gear.
- Not applicable to net float lines.

Proposed language (Part 6, section 6.7(C)(3)):

The use of floating line within eight (8) feet of the surface of the water, that is attached to any fixed fishing gear, is prohibited.



Hearing Item 3b:
Proposal to broaden the buoy and vessel color scheme requirement to all pots

- Proposal originated from Div. of Law Enforcement.
- Requirement currently applies only to Lobster pots.
- Proposal is to broaden rule and apply to all pots and vessels that harvest pots.

Proposed language (Part 6, section 6.7(C)(4)&(5))

Please see noticed regulations



End of Slides!

