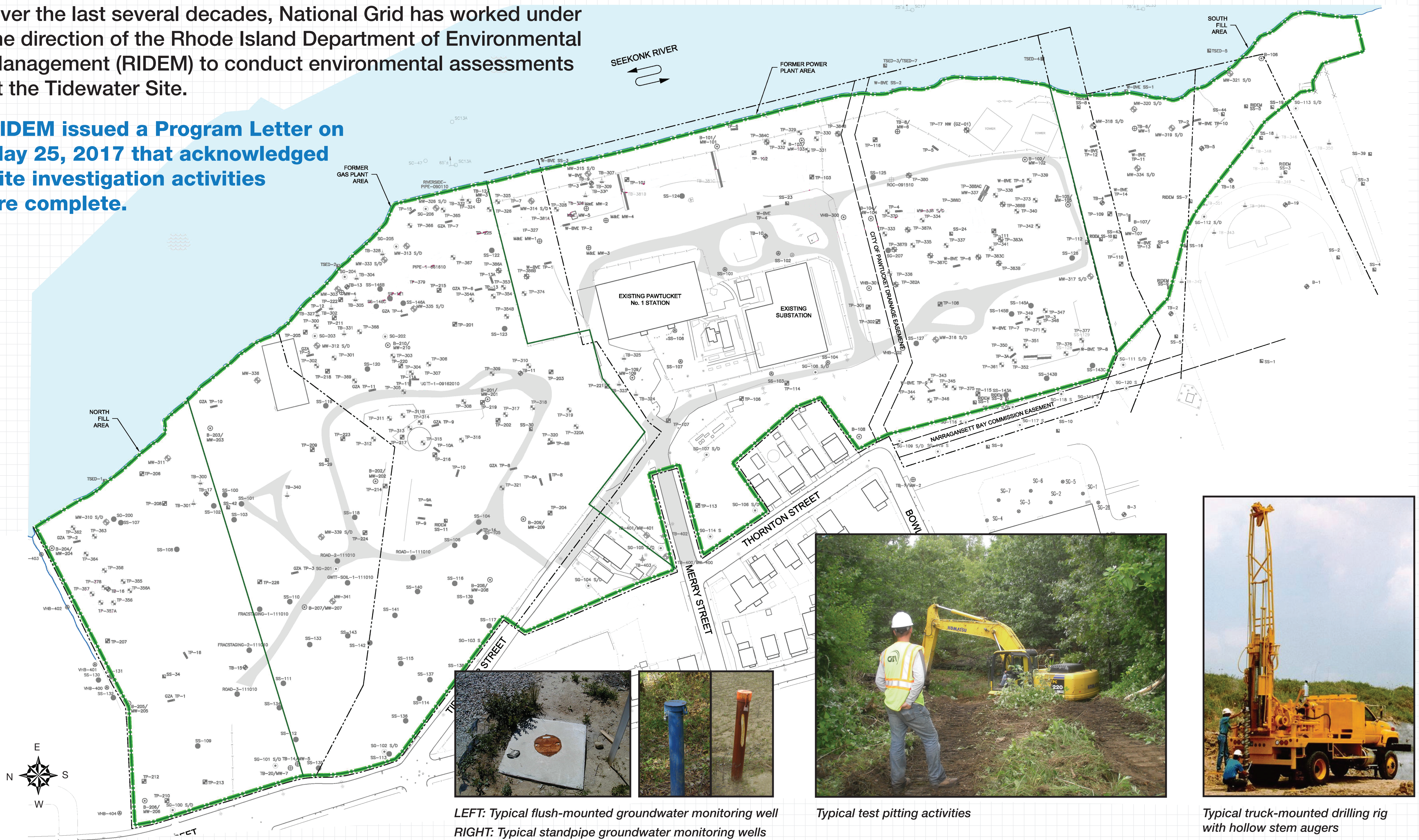


SITE INVESTIGATION

2

Over the last several decades, National Grid has worked under the direction of the Rhode Island Department of Environmental Management (RIDEM) to conduct environmental assessments at the Tidewater Site.

RIDEM issued a Program Letter on May 25, 2017 that acknowledged Site investigation activities are complete.



LEFT: Typical flush-mounted groundwater monitoring well
RIGHT: Typical standpipe groundwater monitoring wells



Typical test pitting activities



Typical truck-mounted drilling rig with hollow stem augers

FOR MORE INFORMATION, PLEASE VISIT WWW.TIDEWATERSITE.COM

nationalgrid